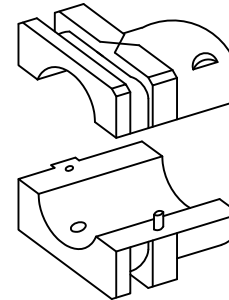
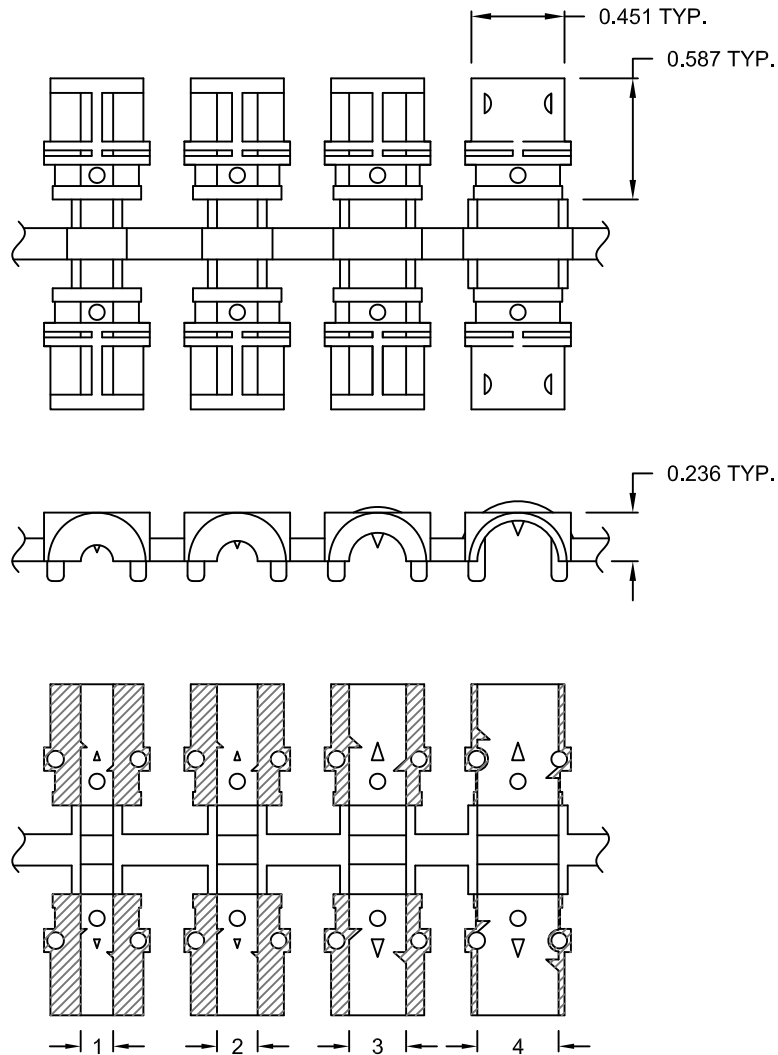


DESCRIPTION: 970 / 971 SERIES - METALIZED PLASTIC COMPRESSION INSERTS

SPECIFICATION:

METALIZED PLASTIC: UL APPROVED ABS PLASTIC, UL94-HB, VH-0800
 METALIZED, SHIELDED
 PLATING - 10µ NICKEL OVER 5µ COPPER



INSERT DIMENSIONS		
NUMBER	in.	mm
1	0.157	[4.0]
2	0.197	[5.0]
3	0.276	[7.0]
4	0.354	[9.0]

NOTE:

INSERTS MAY BE MIXED TO BEST FIT THE CABLE USED

970-RACIR020

BACKSHELL SERIES — 970
 — 971
 DESCRIPTION — **R**APID
 — **A**SSEMBLY
 — **C**OMPRESSION
 — **I**NSERT
 RoHS COMPLIANT —
 MATERIAL — METALIZED PLASTIC

METALIZED PLASTIC GROMMETS

UNITS = INCHES [MM]

DO NOT SCALE FROM DRAWING

RoHS COMPLIANT

	THESE DRAWINGS AND SPECIFICATIONS ARE THE PROPERTY OF NorComp AND SHALL NOT BE REPRODUCED, COPIED OR USED AS THE BASIS FOR THE MANUFACTURE OF SALE OF APPARATUS WITHOUT WRITTEN PERMISSION.		DRAWN: C. SMITH	DATE: 11-06-07
	NorComp		SCALE: NTS	SHEET 1 OF 1
DWG NO. 970-RACIR020				

X-ON Electronics

Largest Supplier of Electrical and Electronic Components

Click to view similar products for [D-Sub Tools & Hardware](#) category:

Click to view products by [NorComp](#) manufacturer:

Other Similar products are found below :

[000-01-09-132](#) [000-01-21-132](#) [000-01-31-162](#) [572019-00105-70](#) [000-01-37-162](#) [621-250-113-115](#) [D110550-2](#) [D20418-137](#) [780-518-50SG6-WS](#) [86552009](#) [86553115TLF](#) [86553117TLF](#) [1230032-1](#) [1-5021101-2](#) [15-000050](#) [1589283-4](#) [160-000-005R031](#) [16-000230](#) [160-025-004R031](#) [160-020-209R000](#) [160X10909X](#) [164C03939A](#) [177-505-A-2-2](#) [1-966830-8](#) [21018-6](#) [2-1393560-9](#) [JS-1000](#) [L17D204182M3E](#) [L17D53018](#) [300X10779X](#) [160X10189X](#) [160X10419X](#) [162-000-050R000](#) [21018-5](#) [212561-3](#) [248C21550X](#) [CF15P](#) [QLOCKPOST-2](#) [D110277](#) [500-008NF1K-01](#) [500-008NF3R3KS-01](#) [500-017M09FN](#) [500-017M15MHN](#) [500-024M1](#) [500-068M3](#) [5-1393561-5](#) [C115373-0001](#) [C115373-0002](#) [3342-4-KIT](#) [K1003](#)