

DIMENSIONS(mm/in)					
SIZE	A ± 0.381 ± 0.015	B ± 0.254 ± 0.010	C ± 0.381 ± 0.015	D ± 0.381 ± 0.015	E ± 0.381 ± 0.015
9	31.24	24.99	35.05	16.00	8.89
	1.230	0.984	1.380	0.630	0.350
15	39.62	33.32	40.89	16.00	9.50
	1.560	1.312	1.610	0.630	0.374
25	53.34	47.04	45.97	16.00	11.18
	2.100	1.852	1.810	0.630	0.444
37	69.60	63.50	45.97	16.00	11.18
	2.740	2.500	1.810	0.630	0.444
50	67.31	61.00	45.97	18.67	13.79
	2.650	2.406	1.810	0.735	0.543

NOTE:

SPECIFICATIONS:

HOUSING MATERIAL (METALIZED):

NICKEL OVER COPPER

OPERATING TEMPERATURE :

-55°C TO +140°C

BACKSHELL KIT INCLUDES:

- (2) BACKSHELL HALVES
- (2) #4-40 MATING SCREWS
- (2) STRAIN RELIEF CLAMPS*
- (2) STRAIN RELIEF SCREWS

GROUND LEAF SPRING

- (0) 9 POSITION KIT
- (1) 15 & 25 & 37 & 50 POSITION KIT

CABLE SLOT BLOCK TAB:

- (0) 9 POSITION KIT
- (1) 15 & 25 & 37 & 50 POSITION KIT

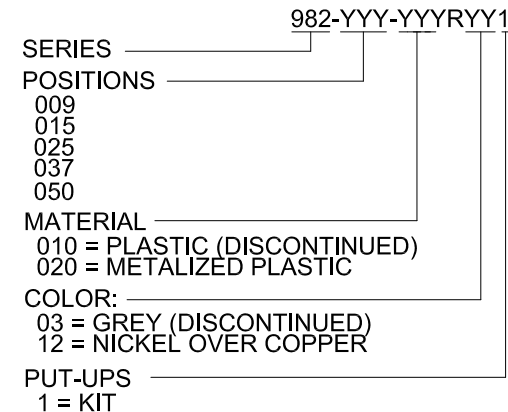
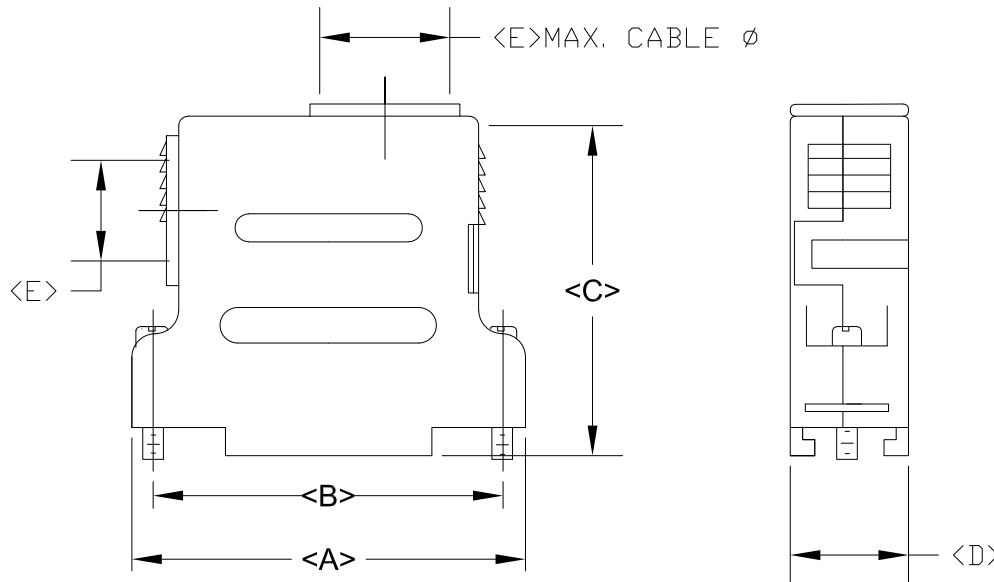
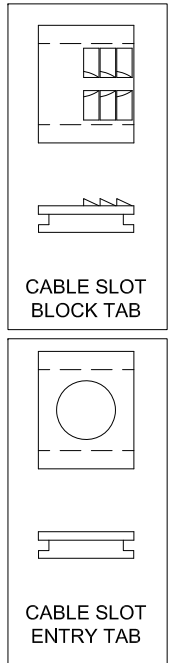
CABLE SLOT ENTRY TAB:

- (0) 9 POSITION KIT (METALIZED)
- (1) 15 & 25 & 37 & 50 POSITION KIT (METALIZED)

HOUSING SCREWS:

- (2) 9 & 15 POSITION KIT
- (3) 25 & 37 & 50 POSITION KIT

*NOTE => 9 POSITION KIT DOES NOT HAVE 90° ENTRY AND ONLY COMES WITH (1) STRAIN RELIEF CLAMP



RoHS COMPLIANT

UNITS = shown in table

DO NOT SCALE FROM DRAWING



THESE DRAWINGS AND SPECIFICATIONS ARE THE PROPERTY OF NorComp AND SHALL NOT BE REPRODUCED, COPIED OR USED AS THE BASIS FOR THE MANUFACTURE OR SALE OF APPARATUS WITHOUT WRITTEN PERMISSION.

DRAWN:
P. JENKINS

DATE:
03/06/2006

NorComp

SCALE: NTS	SHEET 1	OF 1	REV 6
---------------	------------	---------	----------

DWG NO. 982-YYY-0Y0RYY1

X-ON Electronics

Largest Supplier of Electrical and Electronic Components

Click to view similar products for [D-Sub Backshells](#) category:

Click to view products by [NorComp](#) manufacturer:

Other Similar products are found below :

[600X51137X](#) [600X54009X](#) [66241-12A](#) [M85049/6-38N](#) [M85049/86-12N03](#) [M85049/90-13P03](#) [70.350.0636.4](#) [70.350.2435.1](#) [72.350.1035.2](#)
[72.352.2435.1](#) [73.359.4035.3](#) [829472-1](#) [PCS-E20W](#) [970-015-040R011](#) [971-009-030R121](#) [971-009-040R011](#) [971-015-040R011](#) [DPH-B-003](#)
[1437013-9](#) [1484402-8](#) [156-3025-EX](#) [16-500800](#) [165X02659X](#) [165X03329A](#) [165X03399A](#) [165X10259X](#) [165X11359X](#) [165X11759X](#)
[165X11889X](#) [165X11899X](#) [165X13019X](#) [165X13029X](#) [165X13169X](#) [165X13199X](#) [165X13239X](#) [165X13389X](#) [165X13489X](#)
[165X14219X](#) [165X14429X](#) [165X14449X](#) [165X17409X](#) [165X17439X](#) [165X17569X](#) [165X17599X](#) [165X17609X](#) [165X17889X](#)
[165X17979X](#) [L171373](#) [971-025-030R121](#) [300X10989X](#)