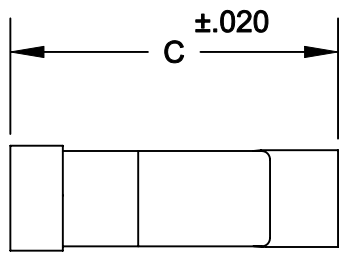
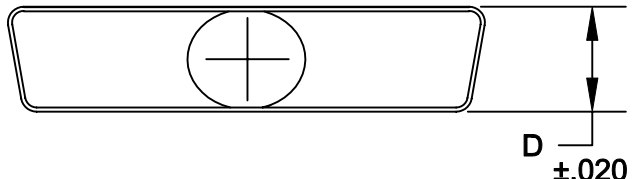
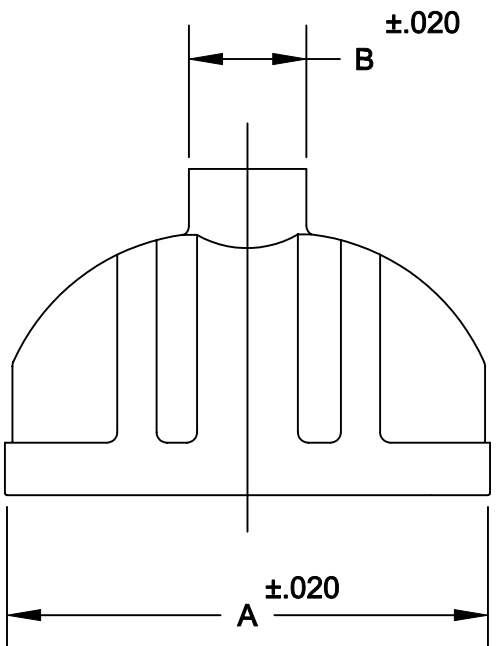


DESCRIPTION: 986 SERIES OVER-MOLD CANS



986-XXX-XXXLXX1

SERIES _____

POSITIONS _____

009 _____

015 _____

025 _____

037 _____

050 _____

MATERIAL _____

COLD ROLLED STEEL _____

PLATING: _____


12 = NICKEL _____

PUT-UPS _____

1 = KIT _____

	A	B	C	D	MAX. CABLE DIA.
9	.815	.410	1.200	.490	.375
	20.70	10.41	30.48	12.45	9.50
15	1.150	.410	1.200	.490	.375
	29.21	10.41	30.48	12.45	9.50
25	1.690	.410	1.200	.490	.375
	42.93	10.41	30.48	12.45	9.50
37	2.340	.610	1.650	.490	.575
	59.44	15.49	41.91	12.45	14.60
50	2.240	.580	1.650	.600	.575
	56.90	14.73	41.91	15.24	14.60

MATERIAL: STEEL
 PLATING: TIN
 RoHS COMPLIANT

	THESE DRAWINGS AND SPECIFICATIONS ARE THE PROPERTY OF NorComp AND SHALL NOT BE REPRODUCED, COPIED OR USED AS THE BASIS FOR THE MANUFACTURE OF SALE OF APPARATUS WITHOUT WRITTEN PERMISSION.		DRAWN: WAYNE ROBBINS	DATE: 9-15-05
	NorComp			CHECKED:
SCALE: 1:1				SHEET 1 OF 1
DWG NO.		986-XXX-020L121		

X-ON Electronics

Largest Supplier of Electrical and Electronic Components

Click to view similar products for [D-Sub Backshells](#) category:

Click to view products by [NorComp](#) manufacturer:

Other Similar products are found below :

[600X51137X](#) [600X54009X](#) [66241-12A](#) [M85049/6-38N](#) [M85049/86-12N03](#) [M85049/90-13P03](#) [70.350.0636.4](#) [70.350.2435.1](#) [72.350.1035.2](#)
[72.352.2435.1](#) [73.359.4035.3](#) [829472-1](#) [PCS-E20W](#) [970-015-040R011](#) [971-009-030R121](#) [971-009-040R011](#) [971-015-040R011](#) [DPH-B-003](#)
[1437013-9](#) [1484402-8](#) [156-3025-EX](#) [16-500800](#) [165X02659X](#) [165X03329A](#) [165X03399A](#) [165X10259X](#) [165X11359X](#) [165X11759X](#)
[165X11889X](#) [165X11899X](#) [165X13019X](#) [165X13029X](#) [165X13169X](#) [165X13199X](#) [165X13239X](#) [165X13389X](#) [165X13489X](#)
[165X14219X](#) [165X14429X](#) [165X14449X](#) [165X17409X](#) [165X17439X](#) [165X17569X](#) [165X17599X](#) [165X17609X](#) [165X17889X](#)
[165X17979X](#) [L171373](#) [971-025-030R121](#) [300X10989X](#)