

Y SERIES

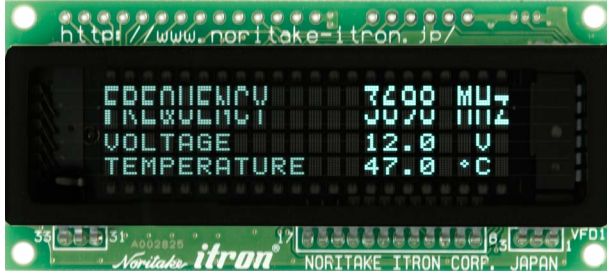
<http://www.noritake-elec.com/y-series.htm>



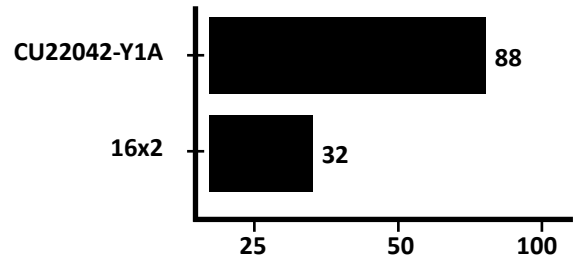
ISO 9001 and ISO 14000 Certified

16 x 2 LCD footprint

CU22042-Y1A / 100



Character number comparison



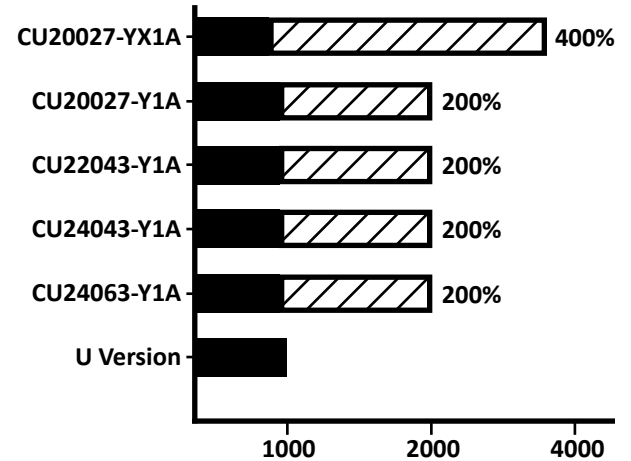
20 x 2 LCD footprint

CU20027-YX1A

CU20027-Y1A / Y100



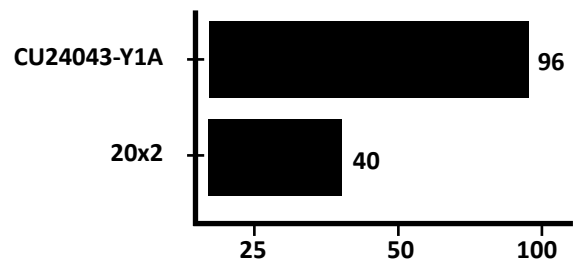
Brightness comparison (Cd/m²)



CU24043-Y1A / Y100

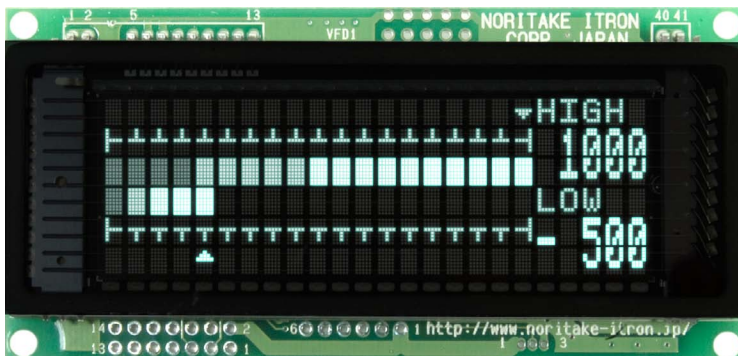


Character number comparison

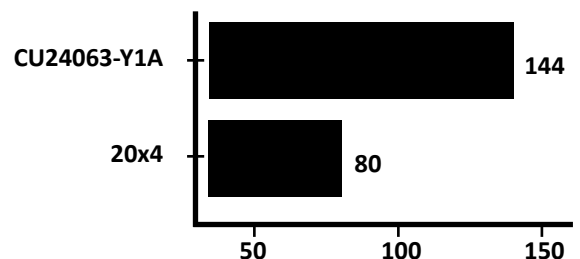


20 x 4 LCD footprint

CU24063-Y1A / Y100



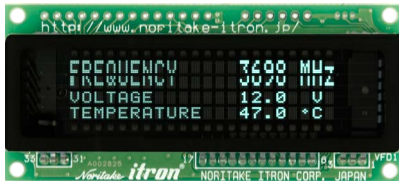
Character number comparison



New to the Y Series

CU22042-Y1A

22x4 characters in 16x2 LCD footprint.



CU20027-YX1A

20x2 LCD footprint and brightest Vacuum Fluorescent Display (VFD) module from Noritake Itron.



Features

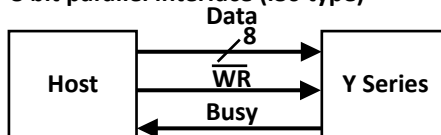
- Easy command set
- 2x the brightness with the brightness boost
- Highlight character
- 16 UDF and 1 custom font table
- 14 International font tables and 10 extended ASCII
- Select from 1x1, 1x2, and 2x2 character sizes
- More characters in compact display size
- 1U rack height models available
- Available in i80 8-bit parallel, asynchronous serial, synchronous serial, and async RS232 interfaces
- Reliability in all environmental conditions
- Wide temperature range of -40°C up to +85°C

Evaluation kits available

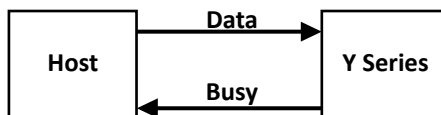
Visit our online shop for Y Series evaluation kits:
noritake-vfd.com/yseries.aspx

Available interfaces

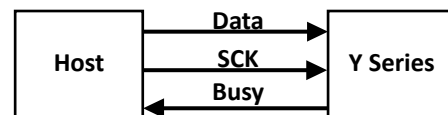
8 bit parallel interface (i80 type)



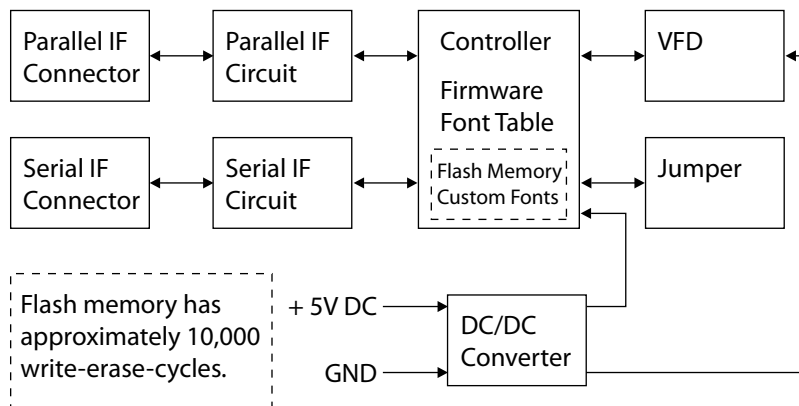
Async serial interface



Sync serial interface

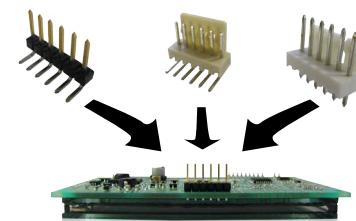
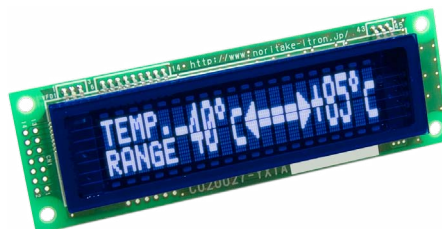


Block Diagram



Value Added Services

Let us pre-assemble the connectors, cables, color filter, and/or conformal coating with your VFD.



VFD module with color filter

Part Number	Number of Characters	Character Height (mm)	Display Size (mm)	PCB Size (mm)	Interface	Power Supply Typical
CU20027-Y1A	20 x 2	7	73.4 x 15.0	116.0 x 37.0	i80 8-bit Parallel (5V CMOS) Async Serial (5V CMOS) Sync Serial (5V CMOS)	5 V / 240 mA
New CU22042-Y1A	22 x 4	2	52.5 x 11.5	80.0 x 36.0		5 V / 180 mA
CU24043-Y1A	24 x 4	3	73.4 x 15.0	116.0 x 37.0		5 V / 220 mA
CU24063-Y1A	24 x 6	3	70.4 x 22.7	98.0 x 47.0		5 V / 320 mA
New CU20027-YX1A	20 x 2	7	73.4 x 15.0	116.0 x 37.0		5 V / 230 mA
New CU200211-Y1A	20 x 2	11	159.0 x 23.6	190.0 x 55.0		5 V / 720 mA
CU20027-Y100	20 x 2	7	73.4 x 15.0	116.0 x 37.0	i80 8-bit Parallel (5V CMOS) Async Serial (RS232)	5 V / 240 mA
New CU22042-Y100	22 x 4	2	52.5 x 11.5	80.0 x 36.0		5 V / 180 mA
CU24043-Y100	24 x 4	3	73.4 x 15.0	116.0 x 37.0		5 V / 220 mA
CU24063-Y100	24 x 6	3	70.4 x 22.7	98.0 x 47.0		5 V / 320 mA
New CU200211-Y100	20 x 2	11	159.0 x 23.6	190.0 x 55.0		5 v / 720 mA

Noritake Co., Inc.

Electronics Division Headquarter
2635 Clearbrook Drive
Arlington Heights, IL 60005
Toll free: (800) 779 - 5846
Phone: (847) 439 - 9020
support.ele@noritake.com
www.noritake-elec.com

East Coast

New Jersey Branch
15-22 Fair Lawn Ave.
Fair Lawn, NJ 07410
Toll free: (888) 296 - 3423
Phone: (201) 475 - 5200
Fax: (201) 796 - 2269

Midwest, Canada, and Mexico

Chicago Branch
2635 Clearbrook Dr.
Arlington Heights, IL 60005
Toll free: (800) 779 - 5846
Phone: (847) 439 - 9020
Fax: (847) 593 - 2285

West Coast

Los Angeles Branch
21081 S. Western Ave. Ste 180
Torrance, CA 90501
Toll free: (888) 795 - 3423
Phone: (310) 320 - 1700
Fax: (310) 320 - 2900

Noritake itron
The brighter side of electronics

E-M1-0001-09

X-ON Electronics

Largest Supplier of Electrical and Electronic Components

Click to view similar products for [noritake](#) manufacturer:

Other Similar products are found below :

[EFP127X098B07A](#) [GU160X80E-7900B](#) [CU16025-UW30J](#) [GU128x18F-K612A2](#) [GU140X32F-7003B](#) [EFP105X067B07A](#) [CU20049-UW2A](#)
[CU24043-Y100](#) [GU140X16G-7000B](#) [CU24043-Y1A](#) [GU126X64F-K612A4](#) [GT800X480A-C903P](#) [GU256X16M-K612C5](#)
[GTWX101VLB00P](#) [GE256X64C-7933B](#) [GTWV070C3A00PA](#) [GU256X128E-3900B](#) [GT800X480A-C903PA](#) [CU22042-Y1A](#) [GU256X64D-](#)
[7000](#) [GTWQ043C3A00PA](#) [EFP164X104B07A](#) [GU128X8T-K612C5](#) [GU256X128D-3900B](#) [TKU016CT-A100](#) [GTWV050C3A00PA](#)
[GU128X64-800B](#) [GTWX101VHA00P](#) [CU16025-UW2J](#) [GU128X32D-7003](#) [CU20025-UW1J](#) [GU256X64F-9900](#) [CU22042-Y100](#)
[GU256X64E-3900B](#) [GTWV050VHB00P](#) [GT800X480A-1303P](#) [CU40026-TW200A](#) [GU140X16G-7806A](#) [GU140X32F-7003](#) [GU140X32F-](#)
[7806A](#) [CU16025-UX6J](#) [GU256X64C-3900B](#) [CU20025-UX1J](#) [GTWV070VHA00P](#) [GU256X64D-3900B](#) [GU112X16G-7000](#) [GU256X128C-](#)
[3900B](#) [CU24025-UW1J](#) [CU20045SCP-B-T31A](#) [CU20049-UW2J](#)