



ELECTRONICS, INC.
 44 FARRAND STREET
 BLOOMFIELD, NJ 07003
 (973) 748-5089
<http://www.nteinc.com>

MPSA64 Silicon PNP Transistor Darlington Amplifier

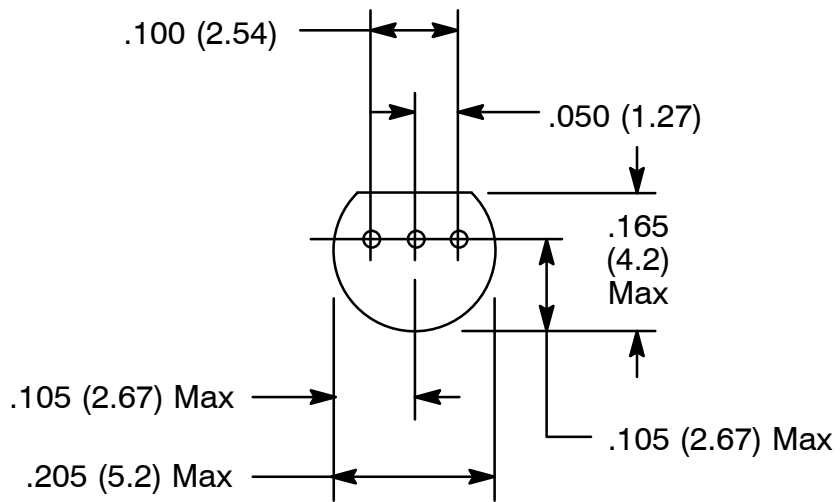
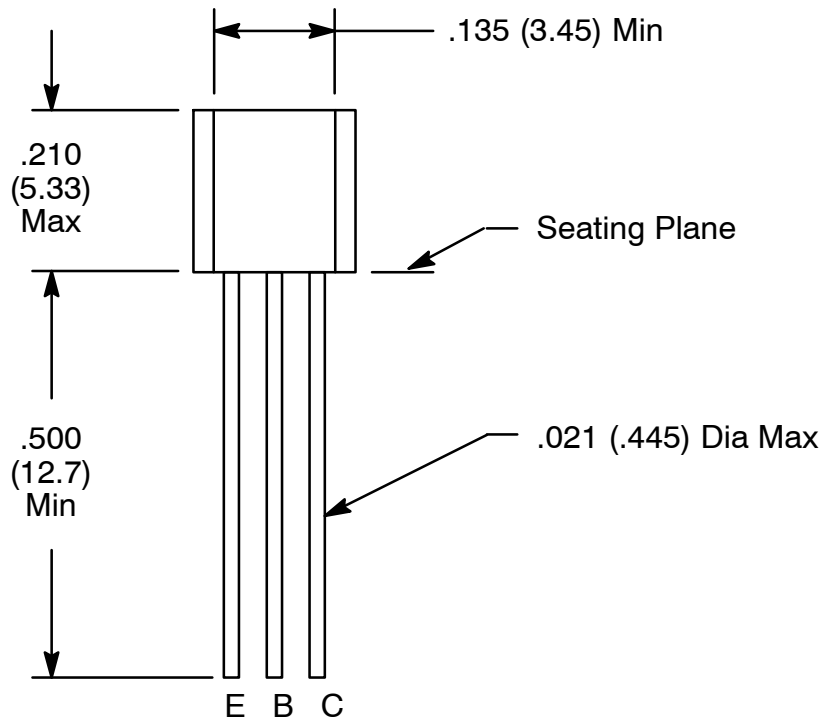
Absolute Maximum Ratings:

Collector–Emitter Voltage, V_{CES}	-30V
Collector–Base Voltage, V_{CBO}	-30V
Emitter–Base Voltage, V_{EBO}	-10V
Continuous Collector Current, I_C	-1.2A
Total Device Dissipation ($T_A = 25^\circ\text{C}$), P_D	625mW
Derate Above 25°C	5mW/ $^\circ\text{C}$
Operating Junction Temperature Range, T_J	-55° to $+150^\circ\text{C}$
Storage Temperature Range, T_{stg}	-55° to $+150^\circ\text{C}$
Thermal Resistance, Junction–to–Case, R_{thJC}	83.3 $^\circ\text{C}/\text{W}$
Thermal Resistance, Junction–to–Ambient, R_{thJA}	200 $^\circ\text{C}/\text{W}$

Electrical Characteristics: ($T_A = +25^\circ\text{C}$ unless otherwise specified)

Parameter	Symbol	Test Conditions	Min	Typ	Max	Unit
OFF Characteristics						
Collector–Emitter Breakdown Voltage	$V_{(BR)CES}$	$I_C = -100\mu\text{A}, I_B = 0$	-30	-	-	V
Collector Cutoff Current	I_{CBO}	$V_{CB} = -30\text{V}, I_E = 0$	-	-	-100	nA
Emitter Cutoff Current	I_{EBO}	$V_{EB} = -10\text{V}, I_C = 0$	-	-	-100	nA
ON Characteristics (Note 1)						
DC Current Gain	h_{FE}	$V_{CE} = -5.0\text{V}, I_C = -10\text{mA}$	10,000	-	-	
		$V_{CE} = -5.0\text{V}, I_C = -100\text{mA}$	20,000	-	-	
Collector–Emitter Saturation Voltage	$V_{CE(sat)}$	$I_C = -100\text{mA}, I_B = -0.1\text{mA}$	-	-	-1.5	V
Base–Emitter Saturation Voltage	$V_{BE(sat)}$	$I_C = -100\text{mA}, V_{CE} = -5.0\text{V}$	-	-	-2.0	V
Small Signal Characteristics						
Current Gain Bandwidth Product	f_t	$I_C = -10\text{mA}, V_{CE} = -5.0\text{V}, f = 100\text{MHz}$	125	-	-	MHz

Note 1. Pulse Test: Pulse Width $\leq 300\mu\text{s}$, Duty Cycle $\leq 2\%$.



X-ON Electronics

Largest Supplier of Electrical and Electronic Components

Click to view similar products for [Darlington Transistors](#) category:

Click to view products by [NTE manufacturer](#):

Other Similar products are found below :

[281287X](#) [BDV64B](#) [LB1205-L-E](#) [2N6053](#) [TIP140](#) [TIP127L-BP](#) [2N6383](#) [2N7371](#) [2N6283](#) [BCV47,215](#) [2SB1560](#) [2SB1647](#) [2SB852KT146B](#)
[2SD2560](#) [TIP112TU](#) [BCV27](#) [MMBTA13-TP](#) [MMSTA28T146](#) [NTE2557](#) [NJVNJD35N04T4G](#) [FJB102TM](#) [BCV47E6327HTSA1](#)
[BSP61H6327XTSA1](#) [BU941ZPFI](#) [NTE2350](#) [NTE245](#) [NTE246](#) [NTE2649](#) [NTE46](#) [NTE98](#) [ULN2003ADR2G](#) [NTE2344](#) [NTE2349](#)
[NTE2405](#) [NTE243](#) [NTE244](#) [NTE247](#) [NTE248](#) [NTE249](#) [NTE253](#) [NTE2548](#) [NTE261](#) [NTE262](#) [NTE263](#) [NTE264](#) [NTE269](#) [NTE270](#)
[NTE214](#) [NTE215](#) [NTE2317](#)