

## NTE131 (PNP) & NTE155 (NPN) Germanium Complementary Transistors Audio Power Amplifier

**Description:**

The NTE131 (PNP) and NTE155 (NPN) are Germanium PNP Alloy Junction transistors in a Japanese TO66 type package designed for use in audio power amplifier applications.

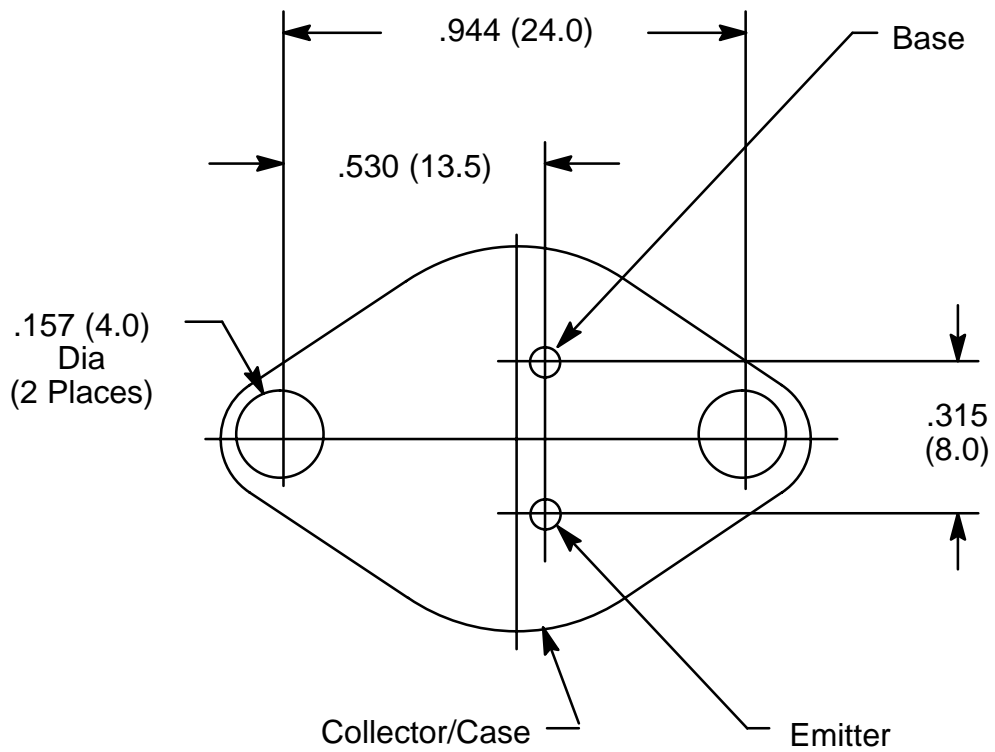
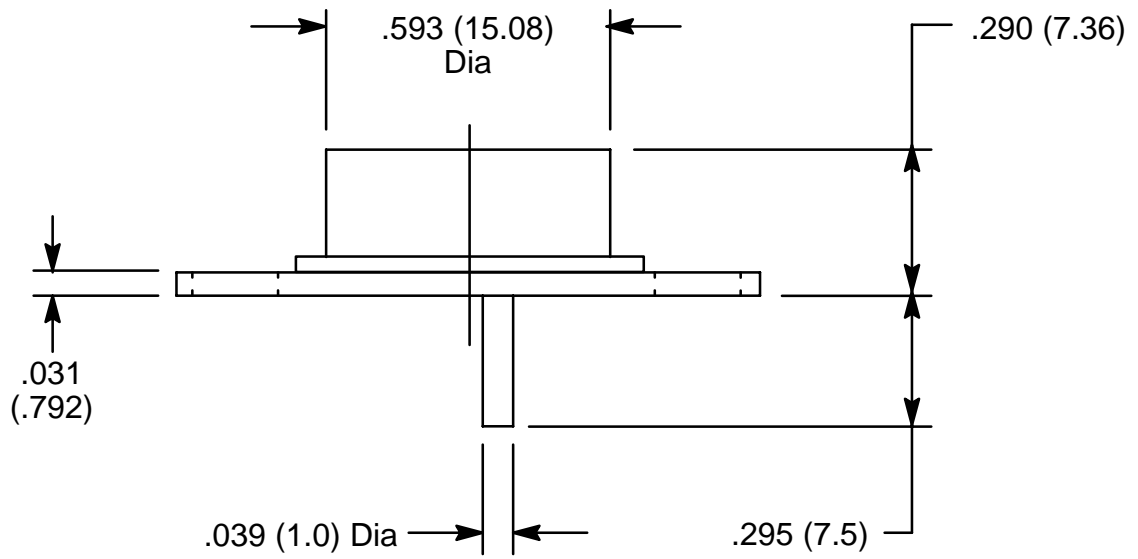
**Absolute Maximum Ratings:** ( $T_A = +25^\circ\text{C}$  unless otherwise specified)

Collector–Base Voltage, $V_{CBO}$ .....	32V
Collector–Emitter Voltage, $V_{CES}$ .....	32V
Emitter–Base Voltage, $V_{EBO}$ .....	10V
Collector Current, $I_C$ .....	1A
Base Current, $I_B$ .....	200mA
Power Dissipation, $P_C$ .....	6W
Operating Junction Temperature, $T_J$ .....	$+90^\circ\text{C}$
Storage Temperature Range, $T_{stg}$ .....	$-55^\circ$ to $+90^\circ\text{C}$

Note 1. NTE131MP is a matched pair of NTE131 with their DC Current Gain ( $h_{FE}$ ) matched to within 10% of each other.

**Electrical Characteristics:** ( $T_A = +25^\circ\text{C}$  unless otherwise specified)

Parameter	Symbol	Test Conditions	Min	Typ	Max	Unit
Collector Cutoff Current	$I_{CEV}$	$V_{CE} = 32V, V_{EB} = 1V$	–	–	1	mA
Emitter Cutoff Current	$I_{EBO}$	$V_{EB} = 10V, I_C = 0$	–	–	1	mA
DC Current Gain	$h_{FE1}$	$V_{CB} = 0, I_E = 100mA$	35	–	170	
	$h_{FE2}$	$V_{CB} = 0, I_E = 1A$	36	–	185	
Common–Emitter Cutoff Frequency	$f_{\alpha e}$	$V_{CB} = 2V, I_E = 100mA$	10	15	–	kHz
Base–Emitter ON Voltage	$V_{BE}$	$V_{CB} = 0, I_E = 1A$	–	0.4	–	V
Collector–Emitter Saturation Voltage	$V_{CE(sat)}$	$I_C = 1A, I_B = 100mA$	–	0.08	–	V



## X-ON Electronics

Largest Supplier of Electrical and Electronic Components

*Click to view similar products for [Bipolar Transistors - BJT category](#):*

*Click to view products by [NTE manufacturer](#):*

Other Similar products are found below :

[BC559C](#) [MCH4017-TL-H](#) [MMBT-2369-TR](#) [BC546/116](#) [NJVMJD148T4G](#) [NTE16](#) [NTE195A](#) [IMX9T110](#) [2N4401-A](#) [2N6728](#) [2SA1419T-TD-H](#) [2SB1204S-TL-E](#) [2SC5488A-TL-H](#) [FMC5AT148](#) [2N2369ADCSM](#) [2N2907A](#) [2N3904-NS](#) [2N5769](#) [2SC4618TLN](#) [CPH6501-TL-E](#) [BC856BW-13-F](#) [US6T6TR](#) [BAX18/A52R](#) [BC556/112](#) [IMZ2AT108](#) [MMST8098T146](#) [MCH6102-TL-E](#) [BC846B-13-F](#) [2N3879](#) [30A02MH-TL-E](#) [NTE13](#) [NTE282](#) [NTE323](#) [NTE350](#) [NTE81](#) [JANTX2N2920L](#) [JANSR2N2907AUB](#) [CMLT3946EG TR](#) [SNSS40600CF8T1G](#) [CMLT3906EG TR](#) [GRP-DATA-JANS2N2907AUB](#) [GRP-DATA-JANS2N2222AUA](#) [MMDT3946FL3-7](#) [2N4240](#) [JANS2N3019](#) [MSB30KH-13](#) [2N2221AUB](#) [2SD1815T-TL-E](#) [2N6678](#) [2N2907Ae4](#)