

NTE164 Silicon NPN Transistor TV Vertical Output

Description:

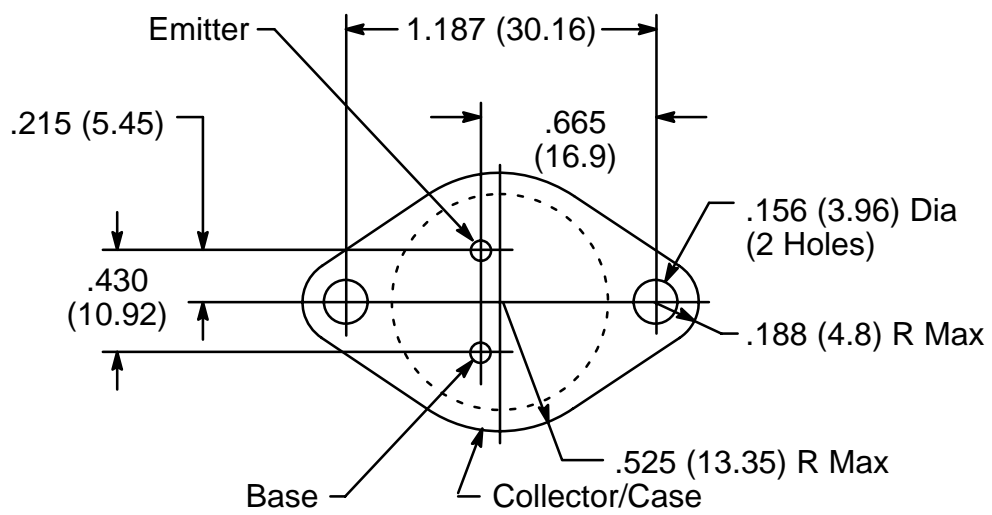
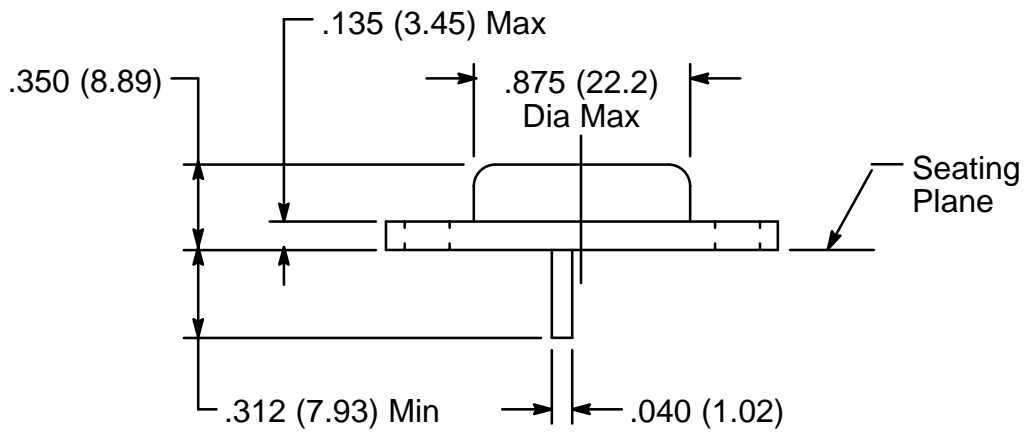
The NTE164 is a high voltage silicon NPN transistor in a TO3 type package designed for color TV vertical output applications.

Absolute Maximum Ratings: ($T_A = +25^\circ\text{C}$ unless otherwise specified)

Collector–Base Voltage, V_{CBO}	1500V
Collector–Emitter Voltage, V_{CER}	700V
Emitter–Base Voltage, V_{EBO}	5V
Collector Current, I_C	1A
Emitter Current, I_E	1A
Collector Dissipation ($T_C = +25^\circ\text{C}$), P_C	50W
Maximum Operating Junction Temperature, T_J	$+150^\circ\text{C}$
Storage Temperature Range, T_{stg}	-65° to $+150^\circ\text{C}$

Electrical Characteristics: ($T_A = +25^\circ\text{C}$ unless otherwise specified)

Parameter	Symbol	Test Conditions	Min	Typ	Max	Unit
Collector Cutoff Current	I_{CBO}	$V_{CB} = 500V, I_E = 0$	–	–	10	μA
Emitter Cutoff Current	I_{EBO}	$V_{EB} = 5V, I_C = 0$	–	–	5	μA
DC Current Gain	h_{FE}	$V_{CE} = 15V, I_C = 2A$	5	20	–	
Collector–Emitter Saturation Voltage	$V_{CE(sat)}$	$I_C = 2A, I_B = 0.6A$	–	5.0	8.5	V
Base–Emitter Saturation Voltage	$V_{BE(sat)}$	$I_C = 2A, I_B = 0.6A$	–	–	1.5	V
Transition Frequency	f_T	$V_{CE} = 10V, I_C = 0.1A$	–	3	–	MHz
Capacitance	C_{ob}	$V_{CB} = 10V, I_E = 0, f = 1\text{MHz}$	–	95	–	pF
Fall Time	t_f	$I_{CP} = 2A, I_{B1} = 0.6A$	–	0.5	1.0	μs



X-ON Electronics

Largest Supplier of Electrical and Electronic Components

Click to view similar products for [Bipolar Transistors - BJT category](#):

Click to view products by [NTE manufacturer](#):

Other Similar products are found below :

[619691C](#) [MCH4017-TL-H](#) [MJ15024/WS](#) [MJ15025/WS](#) [BC546/116](#) [BC556/FSC](#) [BC557/116](#) [BSW67A](#) [HN7G01FU-A\(T5L,F,T](#)
[NJVMJD148T4G](#) [NSVMMBT6520LT1G](#) [NTE187A](#) [NTE195A](#) [NTE2302](#) [NTE2330](#) [NTE2353](#) [NTE316](#) [IMX9T110](#) [NTE63](#) [NTE65](#)
[C4460](#) [SBC846BLT3G](#) [2SA1419T-TD-H](#) [2SA1721-O\(TE85L,F\)](#) [2SA1727TLP](#) [2SA2126-E](#) [2SB1202T-TL-E](#) [2SB1204S-TL-E](#) [2SC5488A-](#)
[TL-H](#) [2SD2150T100R](#) [SP000011176](#) [FMC5AT148](#) [2N2369ADCSM](#) [2SB1202S-TL-E](#) [2SC2412KT146S](#) [2SC4618TLN](#) [2SC5490A-TL-H](#)
[2SD1816S-TL-E](#) [2SD1816T-TL-E](#) [CMXT2207 TR](#) [CPH6501-TL-E](#) [MCH4021-TL-E](#) [BC557B](#) [TTC012\(Q\)](#) [BULD128DT4](#) [JANTX2N3810](#)
[Jantx2N5416](#) [US6T6TR](#) [KSF350](#) [068071B](#)