



ELECTRONICS, INC.
 44 FARRAND STREET
 BLOOMFIELD, NJ 07003
 (973) 748-5089
<http://www.nteinc.com>

NTE2328 (NPN) & NTE2329 (PNP) Silicon Complementary Transistors Audio Power Output TO3PBL Type Package

Features:

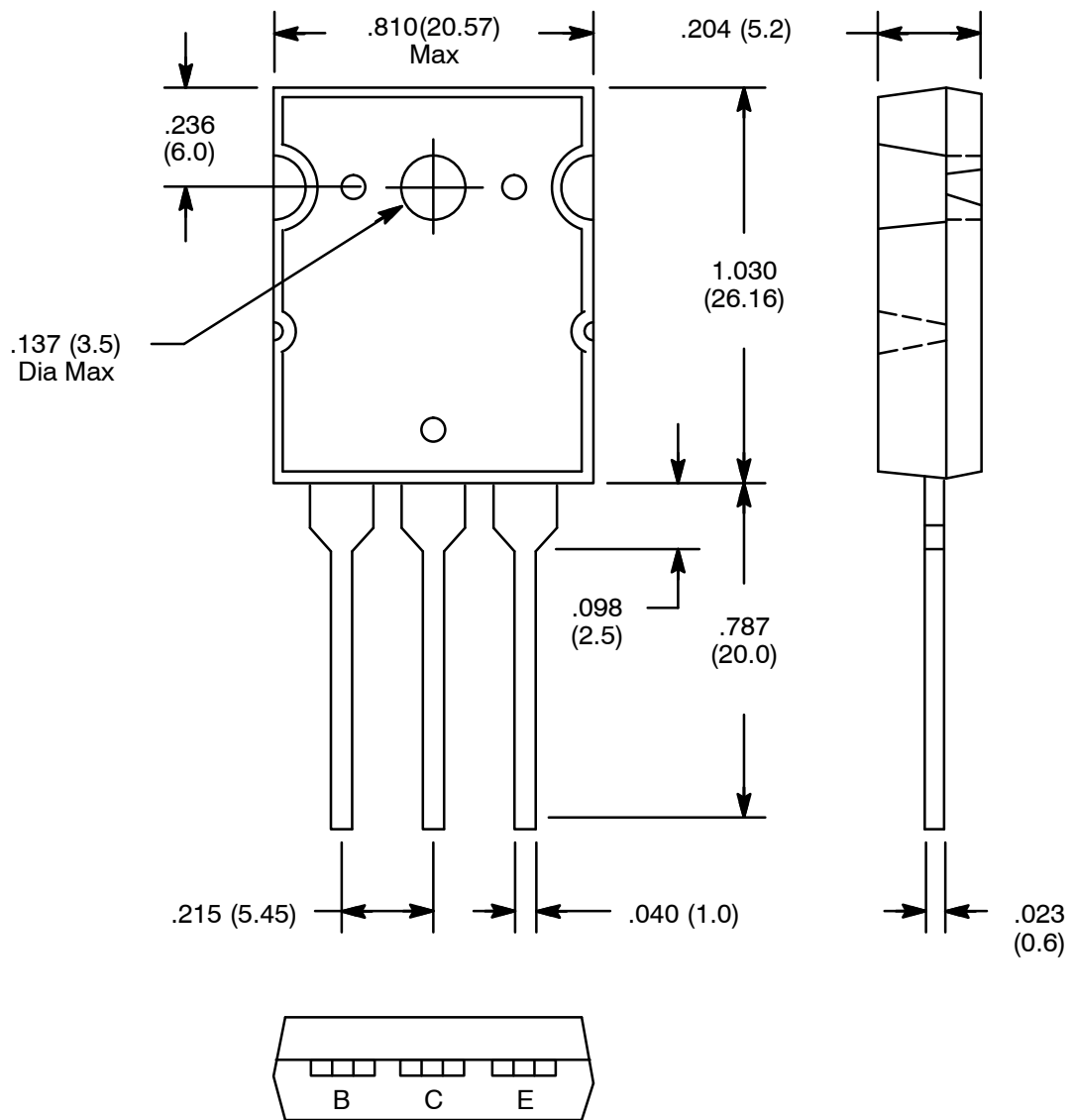
- Recommended for 100W High Fidelity Audio Frequency Amplifier Output Stage

Absolute Maximum Ratings: ($T_A = +25^\circ\text{C}$ unless otherwise specified)

Collector–Base Voltage, V_{CB0}	200V
Collector–Emitter Voltage, V_{CEO}	200V
Emitter–Base Voltage, V_{EBO}	5V
Collector Current, I_C	15A
Base Current, I_B	1.5A
Collector Power Dissipation ($T_C = +25^\circ\text{C}$), P_C	150W
Operating Junction Temperature, T_J	+150°C
Storage Temperature Range, T_{stg}	-55° to +150°C

Electrical Characteristics: ($T_A = +25^\circ\text{C}$ unless otherwise specified)

Parameter	Symbol	Test Conditions	Min	Typ	Max	Unit
Collector Cutoff Current	I_{CB0}	$V_{CB} = 200V, I_E = 0$	-	-	5.0	μA
Emitter Cutoff Current	I_{EBO}	$V_{BE} = 5V, I_C = 0$	-	-	5.0	μA
Collector–Emitter Breakdown Voltage	$V_{(BR)CEO}$	$I_C = 50\text{mA}, I_B = 0$	200	-	-	V
DC Current Gain	h_{FE1}	$V_{CE} = 5V, I_C = 1A$	55	-	160	
	h_{FE2}	$V_{CE} = 5V, I_C = 8A$	35	60	-	
Collector–Emitter Saturation Voltage	$V_{CE(sat)}$	$I_C = 10A, I_B = 1A$	-	1.5	3.0	V
Base–Emitter Voltage	V_{BE}	$V_{CE} = 5V, I_C = 8A$	-	1.0	1.5	V
Transistion Frequency	f_T	$V_{CE} = 5V, I_C = 1A$	-	25	-	MHz
Collector Output Capacitance	C_{ob}	$V_{CB} = 10V, I_E = 0, f = 1\text{MHz}$	-	470	-	pF



Note: Collector connected to heat sink.

X-ON Electronics

Largest Supplier of Electrical and Electronic Components

Click to view similar products for [Bipolar Transistors - BJT category](#):

Click to view products by [NTE manufacturer](#):

Other Similar products are found below :

[619691C](#) [MCH4017-TL-H](#) [MJ15024/WS](#) [MJ15025/WS](#) [BC546/116](#) [BC556/FSC](#) [BC557/116](#) [BSW67A](#) [HN7G01FU-A\(T5L,F,T](#)
[NJVMJD148T4G](#) [NSVMMBT6520LT1G](#) [NTE187A](#) [NTE195A](#) [NTE2302](#) [NTE2330](#) [NTE2353](#) [NTE316](#) [IMX9T110](#) [NTE63](#) [NTE65](#)
[C4460](#) [SBC846BLT3G](#) [2SA1419T-TD-H](#) [2SA1721-O\(TE85L,F\)](#) [2SA1727TLP](#) [2SA2126-E](#) [2SB1202T-TL-E](#) [2SB1204S-TL-E](#) [2SC5488A-](#)
[TL-H](#) [2SD2150T100R](#) [SP000011176](#) [FMC5AT148](#) [2N2369ADCSM](#) [2SB1202S-TL-E](#) [2SC2412KT146S](#) [2SC4618TLN](#) [2SC5490A-TL-H](#)
[2SD1816S-TL-E](#) [2SD1816T-TL-E](#) [CMXT2207 TR](#) [CPH6501-TL-E](#) [MCH4021-TL-E](#) [BC557B](#) [TTC012\(Q\)](#) [BULD128DT4](#) [JANTX2N3810](#)
[Jantx2N5416](#) [US6T6TR](#) [KSF350](#) [068071B](#)