



ELECTRONICS, INC.
 44 FARRAND STREET
 BLOOMFIELD, NJ 07003
 (973) 748-5089

NTE2431 Silicon PNP Transistor High Voltage Amp/Switch (Compl to NTE2430)

Description:

The NTE2431 is a silicon PNP transistor in a SOT-89 type surface mount package designed for use in amplifier and switching applications.

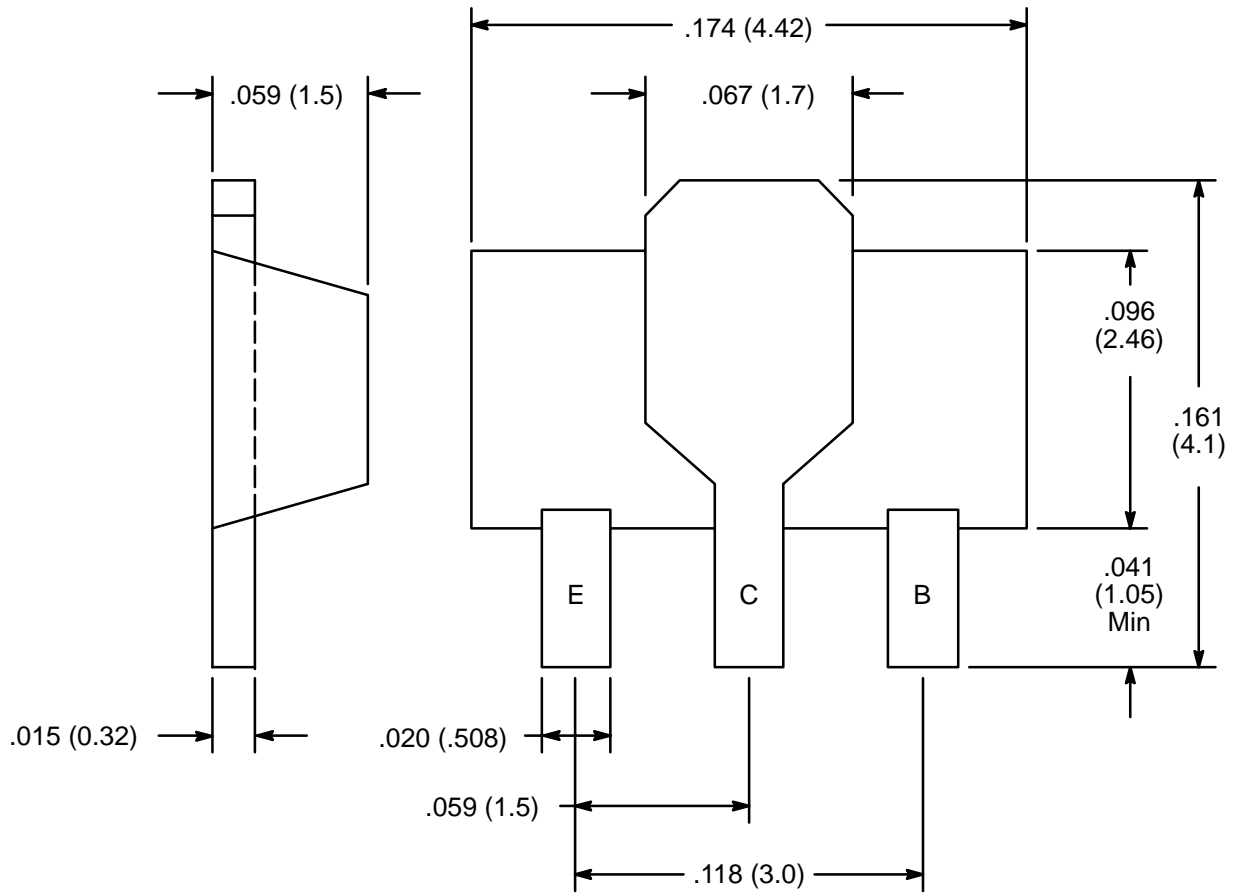
Absolute Maximum Ratings:

Collector-Base Voltage (Open Emitter), V_{CBO}	350V
Collector-Emitter Voltage (Open Base), V_{CEO}	300V
Emitter-Base Voltage (Open Collector), V_{EBO}	6V
DC Collector Current, I_C	1A
Base Current, I_B	500mA
Total Power Dissipation ($T_A \leq +25^\circ\text{C}$, Note 1), P_{tot}	1W
Operating Junction Temperature, T_J	+150°C
Storage Temperature Range, T_{stg}	-65° to +150°C
Thermal Resistance, Junction-to-Ambient (Note 1), R_{thJA}	125K/W
Thermal Resistance, Junction-to-Tab, R_{thJTAB}	10K/W

Note 1. Device mounted on a ceramic substrate; area = 2.5cm², thickness = 0.7mm.

Electrical Characteristics: ($T_J = +25^\circ\text{C}$ unless otherwise specified)

Parameter	Symbol	Test Conditions	Min	Typ	Max	Unit
Collector Cutoff Current	I_{CBO}	$V_{CB} = 280V, I_E = 0$	-	-	1	μA
	I_{CEO}	$V_{CE} = 250V, I_B = 0$	-	-	50	μA
Emitter Cutoff Current	I_{EBO}	$V_{EB} = 6V, I_C = 0$	-	-	20	μA
Collector-Emitter Breakdown Voltage	$V_{(BR)CEO}$	$I_C = 50mA, I_B = 0, L = 25mH$	300	-	-	V
Collector-Emitter Saturation Voltage	$V_{CE(sat)}$	$I_C = 50mA, I_B = 5mA$	-	-	2	V
DC Current Gain	h_{FE}	$V_{CE} = 10V, I_C = 50mA$	30	-	120	
Collector Capacitance	C_c	$I_E = I_e = 0, V_{CB} = 10, f = 1MHz$	-	-	15	pF
Transitional Frequency	f_T	$V_{CE} = 10V, I_C = 10mA, f = 30MHz$	15	-	-	MHz



Bottom View

X-ON Electronics

Largest Supplier of Electrical and Electronic Components

Click to view similar products for [Bipolar Transistors - BJT category](#):

Click to view products by [NTE manufacturer](#):

Other Similar products are found below :

[619691C](#) [MCH4017-TL-H](#) [MJ15024/WS](#) [MJ15025/WS](#) [BC546/116](#) [BC556/FSC](#) [BC557/116](#) [BSW67A](#) [HN7G01FU-A\(T5L,F,T](#)
[NJVMJD148T4G](#) [NSVMMBT6520LT1G](#) [NTE187A](#) [NTE195A](#) [NTE2302](#) [NTE2330](#) [NTE2353](#) [NTE316](#) [IMX9T110](#) [NTE63](#) [NTE65](#)
[C4460](#) [SBC846BLT3G](#) [2SA1419T-TD-H](#) [2SA1721-O\(TE85L,F\)](#) [2SA1727TLP](#) [2SA2126-E](#) [2SB1202T-TL-E](#) [2SB1204S-TL-E](#) [2SC5488A-](#)
[TL-H](#) [2SD2150T100R](#) [SP000011176](#) [FMC5AT148](#) [2N2369ADCSM](#) [2SB1202S-TL-E](#) [2SC2412KT146S](#) [2SC4618TLN](#) [2SC5490A-TL-H](#)
[2SD1816S-TL-E](#) [2SD1816T-TL-E](#) [CMXT2207 TR](#) [CPH6501-TL-E](#) [MCH4021-TL-E](#) [BC557B](#) [TTC012\(Q\)](#) [BULD128DT4](#) [JANTX2N3810](#)
[Jantx2N5416](#) [US6T6TR](#) [KSF350](#) [068071B](#)