



ELECTRONICS, INC.
 44 FARRAND STREET
 BLOOMFIELD, NJ 07003
 (973) 748-5089
<http://www.nteinc.com>

NTE2533

Silicon NPN Transistor

High-Definition Color Display

Horizontal Deflection Output

TO3PBL Type Package

Features:

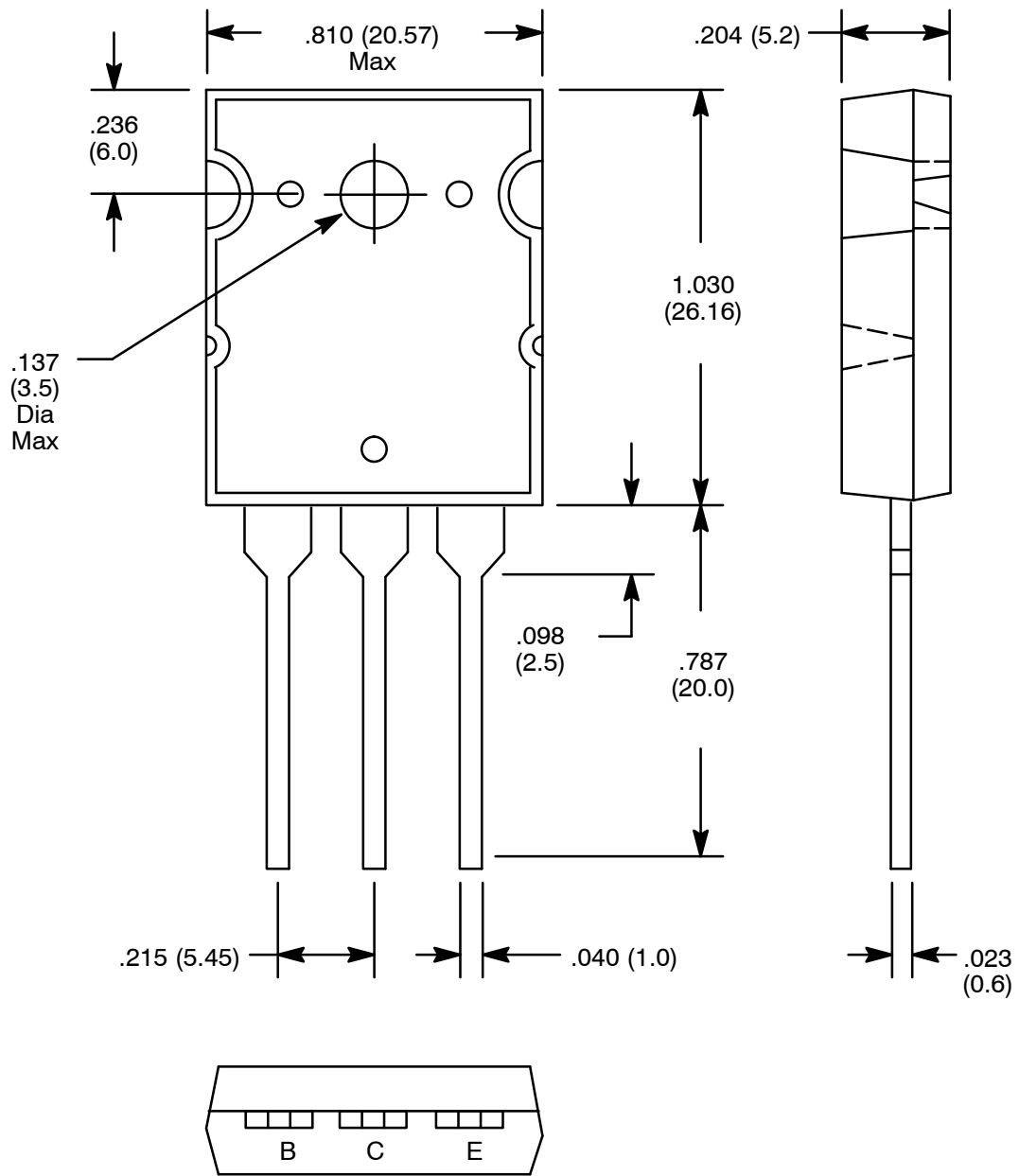
- High Speed: $t_f = 100\text{ns Typ}$
- High Breakdown Voltage: $V_{CBO} = 1500\text{V}$
- High Reliability

Absolute Maximum Ratings: ($T_A = +25^\circ\text{C}$ unless otherwise specified)

Collector to Base Voltage, V_{CBO}	1500V
Collector to Emitter Voltage, V_{CEO}	800V
Emitter to Base Voltage, V_{EBO}	6V
Collector Current, I_C	
Continuous	25A
Peak	50A
Collector Dissipation, P_C	250W
Operating Junction Temperature, T_J	+150°C
Storage Temperature Range, T_{stg}	-55° to +150°C

Electrical Characteristics: ($T_A = +25^\circ\text{C}$ unless otherwise specified)

Parameter	Symbol	Test Conditions	Min	Typ	Max	Unit
Collector Cutoff Current	I_{CES}	$V_{CE} = 1500\text{V}$	-	-	1.0	mA
	I_{CBO}	$V_{CB} = 800\text{V}, I_E = 0$	-	-	10	μA
Collector Sustaining Voltage	$V_{CEO(sus)}$	$I_C = 100\text{mA}, I_B = 0$	800	-	-	V
Emitter Cutoff Current	I_{EBO}	$V_{EB} = 4\text{V}, I_C = 0$	-	-	1.0	mA
DC Current Gain	h_{FE}	$V_{CE} = 5\text{V}, I_C = 1\text{A}$	8	-	60	-
		$V_{CE} = 5\text{V}, I_C = 20\text{A}$	4	-	8	-
Collector-Emitter Saturation Voltage	$V_{CE(sat)}$	$I_C = 20\text{A}, I_B = 5\text{A}$	-	-	5	V
Base-Emitter Saturation Voltage	$V_{BE(sat)}$	$I_C = 20\text{A}, I_B = 5\text{A}$	-	-	1.5	V
Storage Time	t_{stg}	$I_C = 12\text{A}, I_{B1} = 2.4\text{A},$ $I_{B2} = -4.8\text{A}$	-	-	3	μs
Fall Time	t_f		-	-	0.2	μs



NOTE: Pin2 connected to heatsink

X-ON Electronics

Largest Supplier of Electrical and Electronic Components

Click to view similar products for [Bipolar Transistors - BJT category](#):

Click to view products by [NTE manufacturer](#):

Other Similar products are found below :

[619691C](#) [MCH4017-TL-H](#) [MJ15024/WS](#) [MJ15025/WS](#) [BC546/116](#) [BC556/FSC](#) [BC557/116](#) [BSW67A](#) [HN7G01FU-A\(T5L,F,T](#)
[NJVMJD148T4G](#) [NSVMMBT6520LT1G](#) [NTE187A](#) [NTE195A](#) [NTE2302](#) [NTE2330](#) [NTE2353](#) [NTE316](#) [IMX9T110](#) [NTE63](#) [NTE65](#)
[C4460](#) [SBC846BLT3G](#) [2SA1419T-TD-H](#) [2SA1721-O\(TE85L,F\)](#) [2SA1727TLP](#) [2SA2126-E](#) [2SB1202T-TL-E](#) [2SB1204S-TL-E](#) [2SC5488A-](#)
[TL-H](#) [2SD2150T100R](#) [SP000011176](#) [FMC5AT148](#) [2N2369ADCSM](#) [2SB1202S-TL-E](#) [2SC2412KT146S](#) [2SC4618TLN](#) [2SC5490A-TL-H](#)
[2SD1816S-TL-E](#) [2SD1816T-TL-E](#) [CMXT2207 TR](#) [CPH6501-TL-E](#) [MCH4021-TL-E](#) [BC557B](#) [TTC012\(Q\)](#) [BULD128DT4](#) [JANTX2N3810](#)
[Jantx2N5416](#) [US6T6TR](#) [KSF350](#) [068071B](#)