



ELECTRONICS, INC.  
 44 FARRAND STREET  
 BLOOMFIELD, NJ 07003  
 (973) 748-5089  
<http://www.nteinc.com>

## NTE297 (NPN) & NTE298 (PNP) Silicon Complementary Transistors Audio Amplifier, Driver Giant TO92 Type Package

**Features:**

- High Collector–Emitter Voltage
- Ideal for 25 – 30W Low–Frequency Output Drive

**Absolute Maximum Ratings:** ( $T_A = +25^\circ\text{C}$  unless otherwise specified)

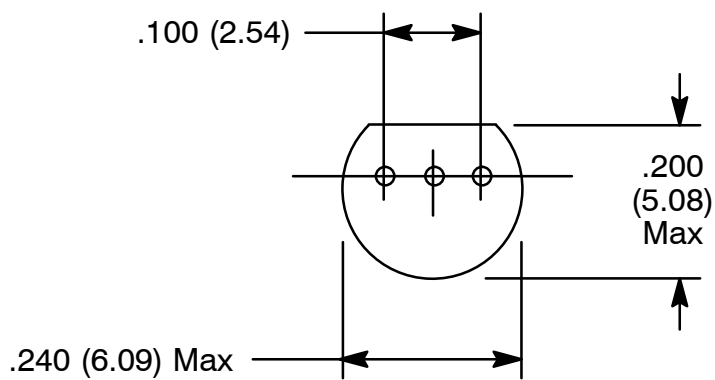
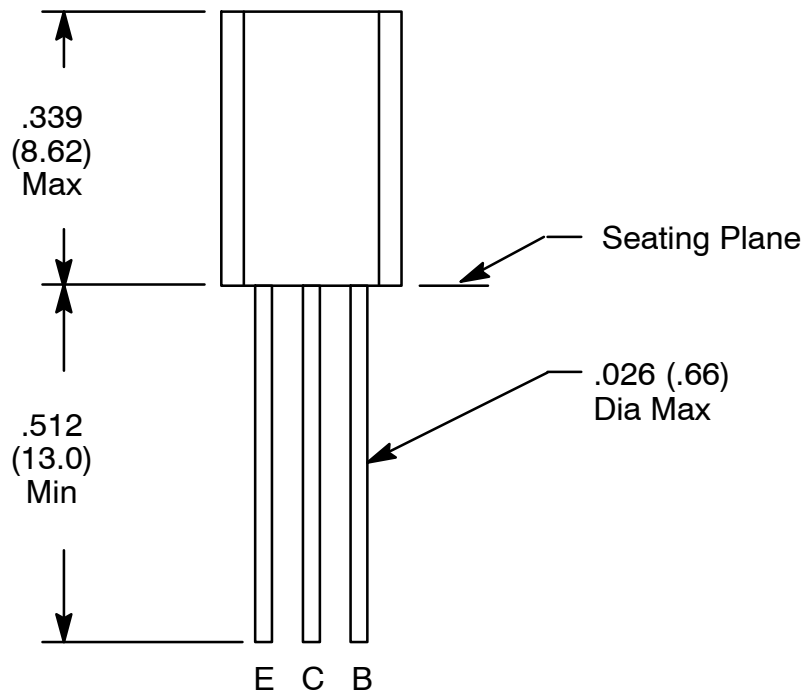
Collector–Base Voltage, $V_{CBO}$ .....	80V
Collector–Emitter Voltage, $V_{CEO}$ .....	80V
Emitter–Base Voltage, $V_{EBO}$ .....	5V
Collector Current, $I_C$	
Continuous .....	0.5A
Peak .....	1A
Collector Power Dissipation, $P_C$ .....	1W
Operating Junction Temperature, $T_J$ .....	+150°C
Storage Temperature Range, $T_{stg}$ .....	–55° to +150°C

**Electrical Characteristics:** ( $T_A = +25^\circ\text{C}$  unless otherwise specified)

Parameter	Symbol	Test Conditions	Min	Typ	Max	Unit
Collector Cutoff Current	$I_{CBO}$	$V_{CB} = 20V, I_E = 0$	–	–	0.1	°A
Collector–Base Voltage	$V_{CBO}$	$I_C = 10^\circ A, I_E = 0$	80	–	–	V
Collector–Emitter Voltage	$V_{CEO}$	$I_C = 100^\circ A, I_B = 0$	80	–	–	V
Emitter–Base Voltage	$V_{EBO}$	$I_E = 10^\circ A, I_C = 0$	5	–	–	V
DC Current Gain	$h_{FE}$	$V_{CE} = 10V, I_C = 150mA, \text{Note 2}$	130	–	330	
		$V_{CE} = 5V, I_C = 500mA, \text{Note 2}$	50	100	–	
Collector–Emitter Saturation Voltage	$V_{CE(sat)}$	$I_C = 300mA, I_B = 30mA, \text{Note 2}$	–	0.2	0.4	V
Base–Emitter Saturation Voltage	$V_{BE(sat)}$	$I_C = 300mA, I_B = 30mA, \text{Note 2}$	–	0.85	1.2	V
Transition Frequency	$f_T$	$V_{CB} = 10V, I_E = 50mA, f = 100MHz$	–	120	–	MHz
Collector Output Capacitance	$C_{ob}$	$V_{CB} = 10V, I_E = 0, f = 1MHz$	–	11	20	pF

Note 1. NTE297MP is a matched pair of NTE297 with their DC Current Gain ( $h_{FE}$ ) matched to within 10% of each other.

Note 2. Pulse Measurement



## X-ON Electronics

Largest Supplier of Electrical and Electronic Components

*Click to view similar products for [Bipolar Transistors - BJT category](#):*

*Click to view products by [NTE manufacturer](#):*

Other Similar products are found below :

[619691C](#) [MCH4017-TL-H](#) [BC546/116](#) [BC557/116](#) [BSW67A](#) [NTE158](#) [NTE187A](#) [NTE195A](#) [NTE2302](#) [NTE2330](#) [NTE63](#) [C4460](#)  
[2SA1419T-TD-H](#) [2SA1721-O\(TE85L,F\)](#) [2SA2126-E](#) [2SB1204S-TL-E](#) [2SC5488A-TL-H](#) [2SD2150T100R](#) [SP000011176](#) [2N2369ADCSM](#)  
[2N5769](#) [2SC2412KT146S](#) [2SC5490A-TL-H](#) [2SD1816S-TL-E](#) [2SD1816T-TL-E](#) [CMXT2207 TR](#) [CPH6501-TL-E](#) [MCH4021-TL-E](#)  
[US6T6TR](#) [NJL0281DG](#) [732314D](#) [CMXT3906 TR](#) [CPH3121-TL-E](#) [CPH6021-TL-H](#) [873787E](#) [IMZ2AT108](#) [UMX21NTR](#) [MCH6102-TL-E](#)  
[NJL0302DG](#) [TTA1452B,S4X\(S](#) [2N3583](#) [NTE103](#) [30A02MH-TL-E](#) [NSV40301MZ4T1G](#) [NTE101](#) [NTE13](#) [NTE15](#) [NTE16001](#) [NTE16006](#)  
[NTE26](#)