



ELECTRONICS, INC.
 44 FARRAND STREET
 BLOOMFIELD, NJ 07003
 (973) 748-5089
<http://www.nteinc.com>

NTE30049 & NTE30050 Infrared Photo Diode

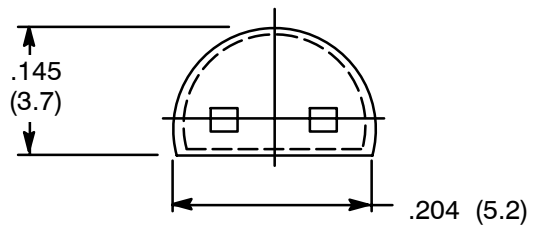
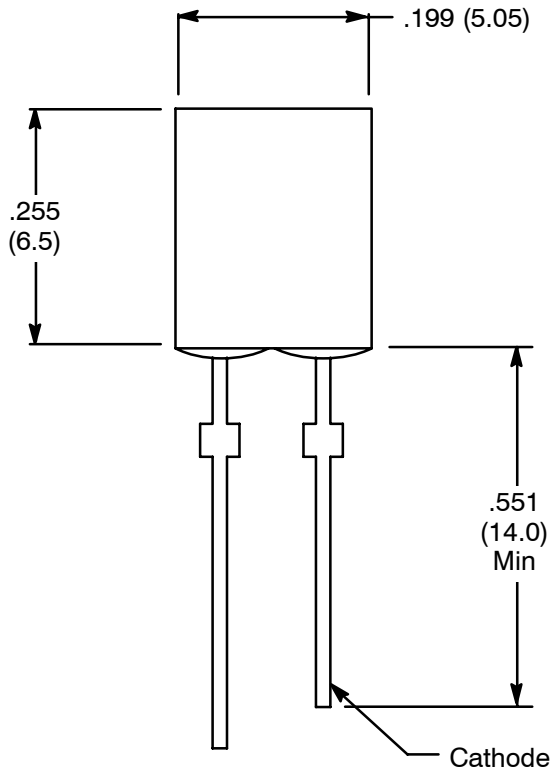
Absolute Maximum Ratings: ($T_A = +25^\circ\text{C}$ unless otherwise specified)

Active Area, AA 7.16mm
 Reverse Voltage, V_R 33V
 Power Dissipation, P_D 150mW
 Operating Temperature Range, T_{opr} -25° to $+85^\circ\text{C}$
 Storage Temperature Range, T_{stg} -40° to $+100^\circ\text{C}$
 Lead Temperature (During Soldering, .078 (2mm) from case bottom, 5sec max), T_L $+260^\circ\text{C}$

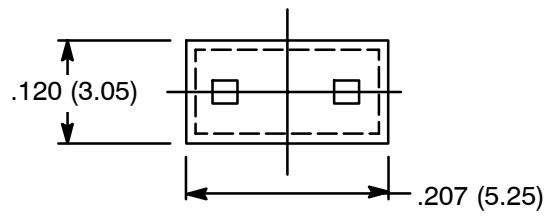
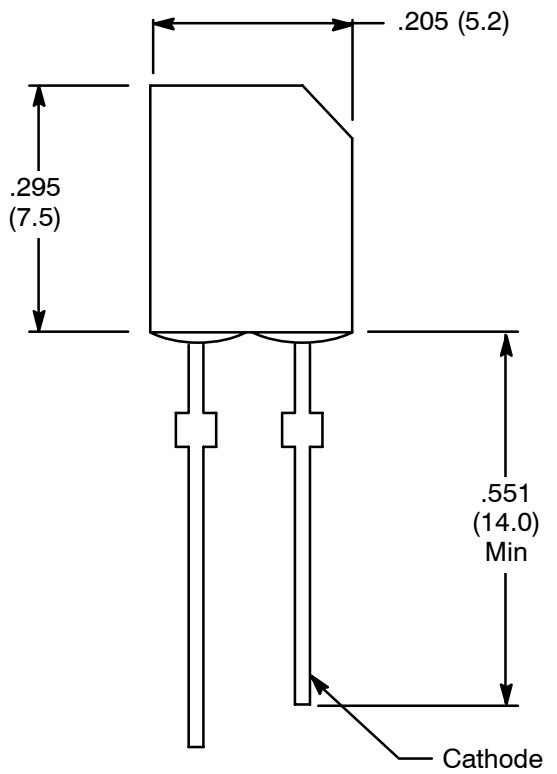
Electrical Characteristics: ($T_A = +25^\circ\text{C}$ unless otherwise specified)

Parameter	Symbol	Test Conditions	Min	Typ	Max	Unit
Forward Voltage	V_F	$I_F = 100 \text{ mA}$	-	1.3	1.6	V
Half Power NTE30049	2 θ 1/2	$E = 0.5 \text{ mW/cm}$	-	120	-	Degree
NTE30050			-	140	-	Degree
Open Circuit Voltage	V_{OC}	$E = 0.5 \text{ mW/cm}$	-	350	-	mV
Light Current NTE30049	I_p	$E = 0.5 \text{ mW/cm}, V_R = 10\text{V}$	-	20	-	μA
NTE30050			-	17	-	μA
Dark Current	I_R	$V_R = 10\text{V}, E = 0$	-	-	30	nA
Peak Wavelength	λ_p		-	900	-	nm
Sensitivity Wavelength NTE30049	S_λ		500	-	1100	-
NTE30050			760	-	1000	-
Rise Time	t_r	$V_R = 10\text{V}, R_L = 1\text{k}\Omega$	-	45	-	ns
Fall Time	t_f	$V_R = 10\text{V}, R_L = 1\text{k}\Omega$	-	45	-	ns

NTE30049



NTE30050



X-ON Electronics

Largest Supplier of Electrical and Electronic Components

Click to view similar products for [NTE manufacturer](#):

Other Similar products are found below :

[5W127](#) [5W5D0](#) [5WD10](#) [747](#) [797](#) [868](#) [R04-11A30-24](#) [RIM-IAC5](#) [1724](#) [NEH100M6.3BA](#) [NEH1.0M63AA](#) [NEH.33M100AA](#)
[NEH3.3M100BA](#) [NEH.47M100AA](#) [NEH680M100GF](#) [NEHH1.0M450CB](#) [NEHH4.7M160BB](#) [NEV.33M100AA](#) [NEVH1.0M160AA](#)
[NEVH1.0M250AB](#) [NEVH3.3M250BB](#) [NEVH3.3M450CC](#) [NTE131](#) [NTE1389](#) [NTE1396](#) [NTE1416](#) [NTE1728](#) [NTE1751](#) [NTE1759](#)
[NTE1780](#) [NTE1813](#) [NTE1837](#) [NTE1845](#) [NTE1863](#) [NTE1872](#) [NTE187A](#) [NTE1897](#) [NTE1915](#) [NTE1964](#) [NTE2085](#) [NTE226](#) [NTE2323](#)
[NTE233](#) [NTE2409](#) [NTE2540](#) [NTE369](#) [NTE48](#) [NTE5156A](#) [NTE526A](#) [NTE5524](#)