



ELECTRONICS, INC.
 44 FARRAND STREET
 BLOOMFIELD, NJ 07003
 (973) 748-5089
<http://www.nteinc.com>

NTE3320

Insulated Gate Bipolar Transistor N-Channel Enhancement Mode, High Speed Switch TO3P Type Package

Features:

- Fourth Generation IGBT
- Enhancement Mode Type
- High Speed
- Low Switching Loss
- Low Saturation Voltage

Applications:

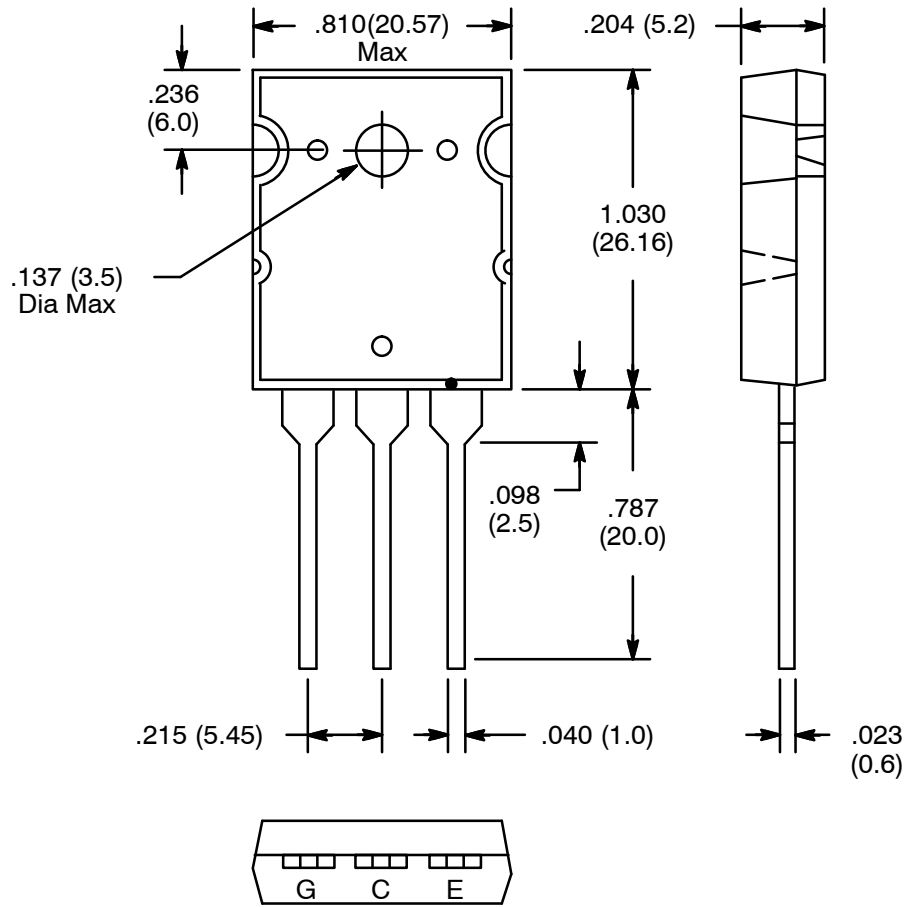
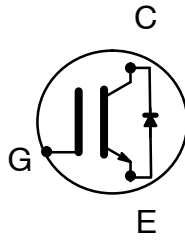
- High Power Switching

Absolute Maximum Ratings: ($T_A = +25^\circ\text{C}$ unless otherwise specified)

Collector-Emitter Voltage, V_{CES}	600V
Gate-Emitter Voltage, V_{GES}	$\pm 20\text{V}$
Collector Current, I_C	
DC	50A
Pulse (1ms)	100A
Collector Power Dissipation ($T_C = +25^\circ\text{C}$), P_C	240W
Operating Junction Temperature, T_J	$+150^\circ\text{C}$
Storage Temperature Range, T_{stg}	-55° to $+150^\circ\text{C}$
Thermal Resistance, Junction-to-Case, $R_{th(j-c)}$	0.521°C/W
Screw Torque	$0.8\text{N}\cdot\text{m}$

Electrical Characteristics: ($T_A = +25^\circ\text{C}$ unless otherwise specified)

Parameter	Symbol	Test Conditions	Min	Typ	Max	Unit
Gate Leakage Current	I_{GES}	$V_{GE} = \pm 20\text{V}, V_{CE} = 0$	-	-	± 500	nA
Collector Cutoff Current	I_{CES}	$V_{CE} = 600\text{V}, V_{GE} = 0$	-	-	1.0	mA
Gate-Emitter Cutoff Voltage	$V_{GE(off)}$	$I_C = 5\text{ mA}, V_{CE} = 5\text{V}$	3.5	-	6.5	V
Collector-Emitter Saturation Voltage	$V_{CE(sat)}$	$I_C = 50\text{A}, V_{GE} = 15\text{V}$	-	2.0	2.45	V
Input Capacitance	C_{ies}	$V_{CE} = 10\text{V}, V_{GE} = 0, f = 1\text{MHz}$	-	7900	-	pF
Turn-On Delay Time	$t_{d(on)}$	Inductive Load $V_{CC} = 300\text{V}, I_C = 50\text{ A},$ $V_{GG} = 15\text{V}, R_G = 13\ \Omega$	-	0.09	-	μs
Rise Time	t_r		-	0.07	-	μs
Turn-On Time	t_{on}		-	0.24	-	μs
Turn-Off Delay Time	$t_{d(off)}$		-	0.30	-	μs
Fall Time	t_f		-	0.05	-	μs
Turn-Off Time	t_{off}		-	0.43	-	μs
Turn-On Switching Loss	E_{on}		-	1.30	-	mJ
Turn-Off Switching Loss	E_{off}		-	1.34	-	mJ



Note: Collector connected to heat sink.

X-ON Electronics

Largest Supplier of Electrical and Electronic Components

Click to view similar products for [IGBT Transistors](#) category:

Click to view products by [NTE manufacturer](#):

Other Similar products are found below :

[748152A](#) [FGH60T65SHD_F155](#) [APT100GT60B2RG](#) [APT13GP120BG](#) [APT20GN60BG](#) [APT20GT60BRDQ1G](#) [APT25GN120B2DQ2G](#)
[APT35GA90BD15](#) [APT36GA60BD15](#) [APT40GP60B2DQ2G](#) [APT40GP90B2DQ2G](#) [APT50GN120B2G](#) [APT50GT60BRG](#)
[APT64GA90B2D30](#) [APT70GR120J](#) [NGTB10N60FG](#) [NGTB30N60L2WG](#) [NGTG25N120FL2WG](#) [IGP30N60H3XKSA1](#) [STGB15H60DF](#)
[STGFW20V60DF](#) [STGFW30V60DF](#) [STGFW40V60F](#) [STGWA25H120DF2](#) [FGB3236_F085](#) [APT25GN120BG](#) [APT25GR120S](#)
[APT30GN60BDQ2G](#) [APT30GN60BG](#) [APT30GP60BG](#) [APT30GS60BRDQ2G](#) [APT30N60BC6](#) [APT35GP120JDQ2](#) [APT36GA60B](#)
[APT45GR65B2DU30](#) [APT50GP60B2DQ2G](#) [APT68GA60B](#) [APT70GR65B](#) [APT70GR65B2SCD30](#) [GT50JR22\(STA1ES\)](#) [TIG058E8-TL-H](#)
[IDW40E65D2](#) [NGTB50N60L2WG](#) [STGB10H60DF](#) [STGB20V60F](#) [STGB40V60F](#) [STGFW80V60F](#) [IGW40N120H3FKSA1](#)
[RJH60D7BDPQ-E0#T2](#) [APT40GR120B](#)