



ELECTRONICS, INC.
 44 FARRAND STREET
 BLOOMFIELD, NJ 07003
 (973) 748-5089

NTE340 Silicon NPN Transistor RF Power Output, High Frequency

Features:

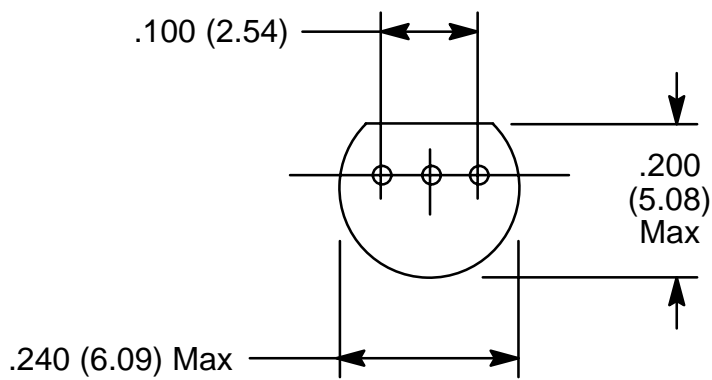
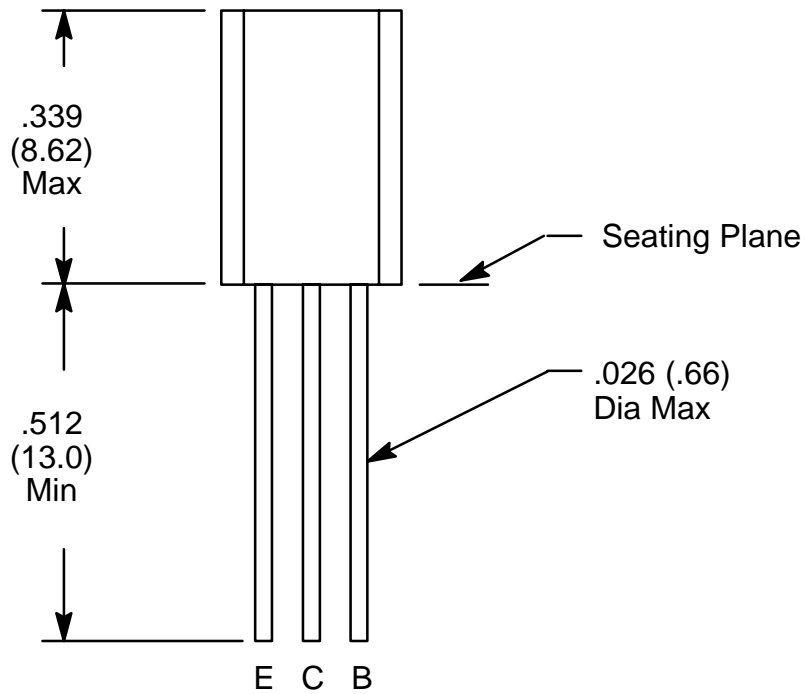
- High Transition Frequency
- Output of 0.6W can be obtained in the VHF Band (f = 175MHz).

Absolute Maximum Ratings: ($T_A = +25^\circ\text{C}$ unless otherwise specified)

Collector–Base Voltage, V_{CBO}	36V
Collector–Emitter Voltage, V_{CEO}	16V
Emitter–Base Voltage, V_{EBO}	3V
Peak Collector Voltage, I_{CP}	0.5A
Collector Current, I_C	0.3A
Collector Power Dissipation, P_C	1W
Operating Junction Temperature, T_j	$+150^\circ\text{C}$
Storage Temperature Range, T_{stg}	-55° to $+150^\circ\text{C}$

Electrical Characteristics: ($T_A = +25^\circ\text{C}$ unless otherwise specified)

Parameter	Symbol	Test Conditions	Min	Typ	Max	Unit
Collector Cutoff Current	I_{CBO}	$V_{CB} = 20V, I_E = 0$	–	–	10	μA
DC Current Gain	h_{FE}	$V_{CE} = 13.5V, I_C = 100\text{mA}$	20	50	–	–
Transition Frequency	f_T	$V_{CB} = 10V, I_E = -100\text{mA}, f = 200\text{MHz}$	1.5	2	–	GHz
Collector Output Capacitance	C_{ob}	$V_{CB} = 10V, I_E = 0, f = 1\text{MHz}$	–	4	8	pF
High–Frequency Output	P_O	$V_{CC} = 13.5V, P_I = 0.03W, f = 175\text{MHz}$	0.6	0.9	–	W
Overall Efficiency	η	$V_{CC} = 13.5V, P_I = 0.03W, f = 175\text{MHz}$	–	60	–	%



X-ON Electronics

Largest Supplier of Electrical and Electronic Components

Click to view similar products for [Bipolar Transistors - BJT category](#):

Click to view products by [NTE manufacturer](#):

Other Similar products are found below :

[619691C](#) [MCH4017-TL-H](#) [MJ15024/WS](#) [MJ15025/WS](#) [BC546/116](#) [BC556/FSC](#) [BC557/116](#) [BSW67A](#) [HN7G01FU-A\(T5L,F,T](#)
[NJVMJD148T4G](#) [NSVMMBT6520LT1G](#) [NTE187A](#) [NTE195A](#) [NTE2302](#) [NTE2330](#) [NTE2353](#) [NTE316](#) [IMX9T110](#) [NTE63](#) [NTE65](#)
[C4460](#) [SBC846BLT3G](#) [2SA1419T-TD-H](#) [2SA1721-O\(TE85L,F\)](#) [2SA1727TLP](#) [2SA2126-E](#) [2SB1202T-TL-E](#) [2SB1204S-TL-E](#) [2SC5488A-](#)
[TL-H](#) [2SD2150T100R](#) [SP000011176](#) [FMC5AT148](#) [2N2369ADCSM](#) [2SB1202S-TL-E](#) [2SC2412KT146S](#) [2SC4618TLN](#) [2SC5490A-TL-H](#)
[2SD1816S-TL-E](#) [2SD1816T-TL-E](#) [CMXT2207 TR](#) [CPH6501-TL-E](#) [MCH4021-TL-E](#) [BC557B](#) [TTC012\(Q\)](#) [BULD128DT4](#) [JANTX2N3810](#)
[Jantx2N5416](#) [US6T6TR](#) [KSF350](#) [068071B](#)