



ELECTRONICS, INC.  
 44 FARRAND STREET  
 BLOOMFIELD, NJ 07003  
 (973) 748-5089  
<http://www.nteinc.com>

## NTE457

### Silicon N-Channel JFET Transistor General Purpose Amp, Switch TO92 Type Package

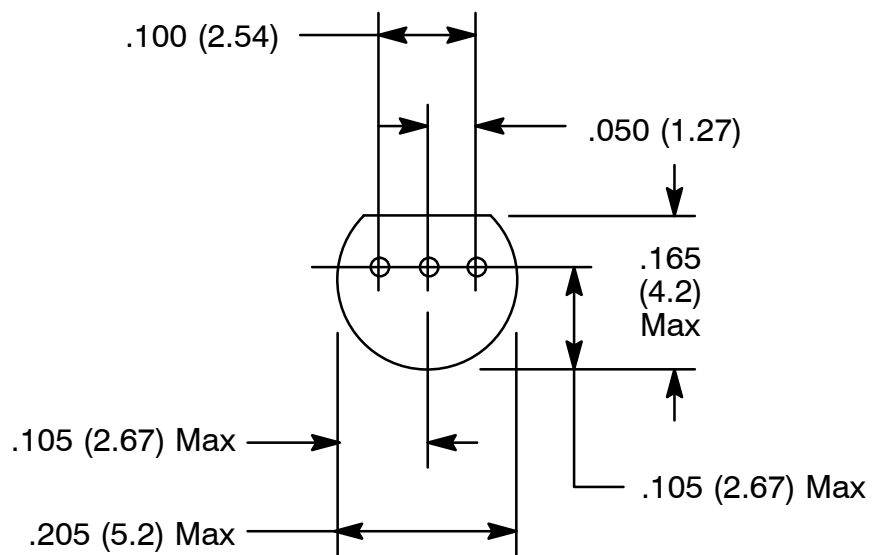
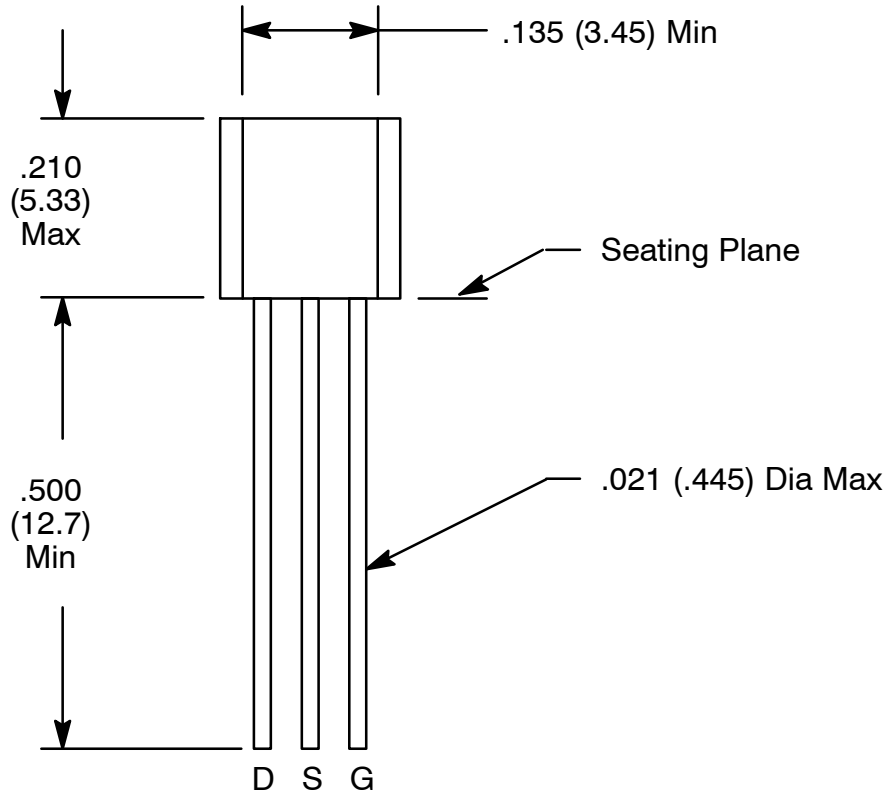
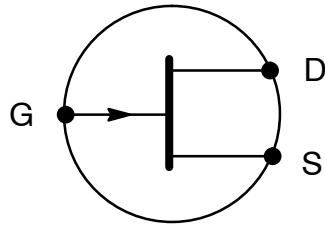
**Absolute Maximum Ratings:**

|   |                                       |
|---|---------------------------------------|
| Drain-Source Voltage, $V_{DS}$ .....                                | 25V                                   |
| Drain-Gate Voltage, $V_{DG}$ .....                                  | 25V                                   |
| Reverse Gate-Source Voltage, $V_{GSR}$ .....                        | -25V                                  |
| Gate Current, $I_G$ .....   | 10mA                                  |
| Total Device Dissipation ( $T_A = +25^\circ\text{C}$ ), $P_D$ ..... | 310mW                                 |
| Derate Above $25^\circ\text{C}$ .....                               | 2.82mW/ $^\circ\text{C}$              |
| Operating Junction Temperature, $T_J$ .....                         | +125 $^\circ\text{C}$                 |
| Storage Temperature Range, $T_{stg}$ .....                          | -65 $^\circ$ to +150 $^\circ\text{C}$ |

**Electrical Characteristics:** ( $T_A = +25^\circ\text{C}$  unless otherwise specified)

| Parameter                                    | Symbol        | Test Conditions  | Min  | Typ | Max  | Unit              |
|--|---------------|--|------|-----|------|-------------------|
| <b>OFF Characteristics</b>                   |               |  |      |     |      |                   |
| Gate-Source Breakdown Voltage                | $V_{(BR)GS}$  | $I_G = -10\mu\text{A}, V_{DS} = 0$                             | -25  | -   | -    | V                 |
| Gate Reverse Current                         | $I_{GSS}$     | $V_{GS} = 15\text{V}, V_{DS} = 0$                              | -    | -   | -1   | mA                |
|  |               | $V_{GS} = 15\text{V}, V_{DS} = 0, T_A = +100^\circ\text{C}$    | -    | -   | -200 | mA                |
| Gate-Source Cutoff Voltage                   | $V_{GS(off)}$ | $V_{DS} = 15\text{V}, I_D = 10\text{nA}$                       | -0.5 | -   | -6.0 | V                 |
| Gate-Source Voltage                          | $V_{GS}$      | $V_{DS} = 15\text{V}, I_D = 100\mu\text{A}$                    | -    | -   | -2.5 | V                 |
| <b>ON Characteristics</b>                    |               |  |      |     |      |                   |
| Zero-Gate Voltage Drain Current              | $I_{DSS}$     | $V_{DS} = 15\text{V}, V_{GS} = 0$ , Note 1                     | 1    | 3   | 5    | mA                |
| <b>Small-Signal Characteristics</b>          |               |  |      |     |      |                   |
| Forward Transfer Admittance<br>Common Source | $ y_{fs} $    | $V_{DS} = 15\text{V}, V_{GS} = 0, f = 1\text{kHz}$ ,<br>Note 1 | 1000 | -   | 5000 | $\leq\text{mhos}$ |
| Output Admittance Common Source              | $ y_{os} $    | $V_{DS} = 15\text{V}, V_{GS} = 0, f = 1\text{kHz}$ ,<br>Note 1 | -    | 10  | 50   | $\leq\text{mhos}$ |
| Input Capacitance                            | $C_{iss}$     | $V_{DS} = 15\text{V}, V_{GS} = 0, f = 1\text{kHz}$             | -    | 4.5 | 7.0  | pF                |
| Reverse Transfer Capacitance                 | $C_{rss}$     | $V_{DS} = 15\text{V}, V_{GS} = 0, f = 1\text{kHz}$             | -    | 1.5 | 3.0  | pF                |

Note 1. Pulse Test: Pulse Width  $\leq 630\text{ms}$ , Duty Cycle  $\leq 10\%$ .



## X-ON Electronics

Largest Supplier of Electrical and Electronic Components

*Click to view similar products for [MOSFET](#) category:*

*Click to view products by [NTE](#) manufacturer:*

Other Similar products are found below :

[614233C](#) [648584F](#) [MCH3443-TL-E](#) [MCH6422-TL-E](#) [FDPF9N50NZ](#) [FW216A-TL-2W](#) [FW231A-TL-E](#) [APT5010JVR](#) [NTNS3A92PZT5G](#)  
[IRF100S201](#) [JANTX2N5237](#) [2SK2464-TL-E](#) [2SK3818-DL-E](#) [FCA20N60\\_F109](#) [FDZ595PZ](#) [STD6600NT4G](#) [FSS804-TL-E](#) [2SJ277-DL-E](#)  
[2SK1691-DL-E](#) [2SK2545\(Q,T\)](#) [D2294UK](#) [405094E](#) [423220D](#) [MCH6646-TL-E](#) [TPCC8103,L1Q\(CM](#) [367-8430-0972-503](#) [VN1206L](#)  
[424134F](#) [026935X](#) [051075F](#) [SBVS138LT1G](#) [614234A](#) [715780A](#) [NTNS3166NZT5G](#) [751625C](#) [873612G](#) [IRF7380TRHR](#)  
[IPS70R2K0CEAKMA1](#) [RJK60S3DPP-E0#T2](#) [RJK60S5DPK-M0#T0](#) [APT5010JVFR](#) [APT12031JFLL](#) [APT12040JVR](#) [DMN3404LQ-7](#)  
[NTE6400](#) [JANTX2N6796U](#) [JANTX2N6784U](#) [JANTXV2N5416U4](#) [SQM110N05-06L-GE3](#) [SIHF35N60E-GE3](#)