

NTE998 Integrated Circuit 1.22V Reference Diode

Description:

The NTE998 is a temperature compensated low voltage reference device in a TO92 type package. A single monolithic structure is obtained by utilizing transistors and thin film resistors. Benefits of this construction is low noise, low current, and good long term stability associated with modern integrated circuits.

These characteristics make this device ideal for applications in battery operated equipment or where low power is necessary.

Features:

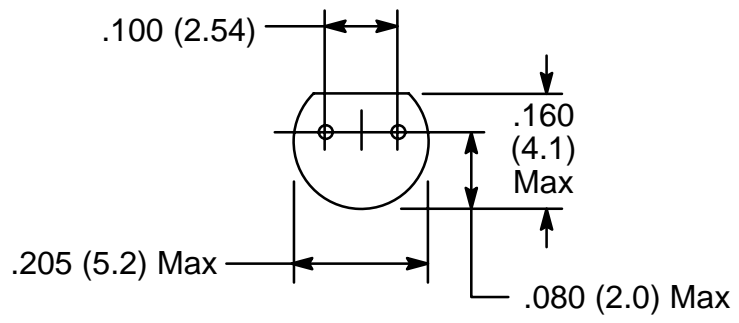
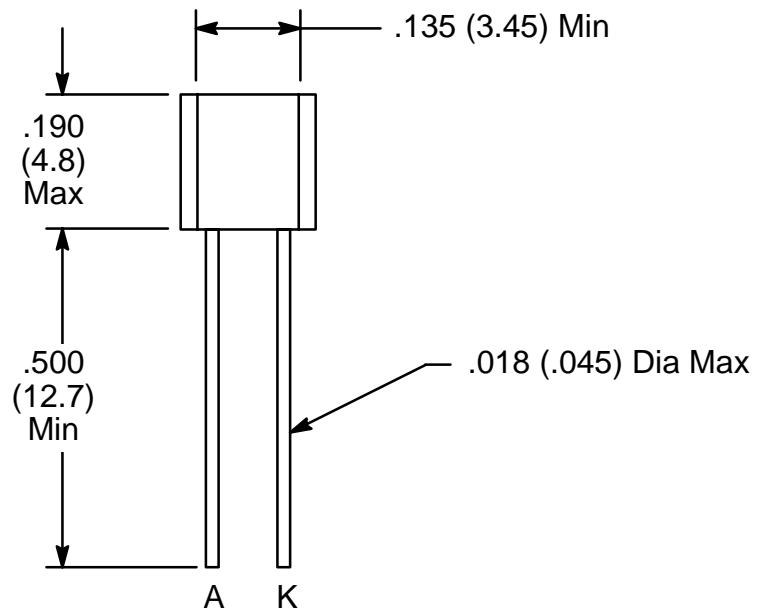
- Low Breakdown Voltage: 1.220V typ
- Low Bias Current: 50µA
- Temperature Stability: .005 to .01%/°C

Absolute Maximum Ratings:

Power Dissipation (free air)	600mW
Linear Derating Factor	5mW/°C
Forward Current	5mA
Reverse Current	5mA
Storage Temperature	-65° to +150°C
Operating Range	0° to +70°C
Lead Temperature (Soldering, 10 sec.)	+260°C

Electrical Characteristics:

Parameter	Test Conditions	Min	Typ	Max	Unit
Reverse Breakdown Voltage	$I_R = 500\mu A$	1.20	1.22	1.25	V
Reverse Breakdown Voltage Change	$50\mu A \leq I_R \leq 5mA$	-	15	20	mV
Reverse Dynamic Impedance	$I_R = 50\mu A$	-	1	2	Ω
	$I_R = 500\mu A$	-	1	2	Ω
Forward Voltage Drop	$I_F = 500\mu A$	-	0.7	1.0	V
RMS Noise Voltage	$I_F = 500\mu A$	-	0.7	1.0	V
Breakdown Voltage Temperature Coefficient	$50\mu A \leq I_R \leq 5mA$	-	0.003	0.01	%/°C
Reverse Current		0.05	-	5.0	mA



X-ON Electronics

Largest Supplier of Electrical and Electronic Components

Click to view similar products for [Voltage References](#) category:

Click to view products by [NTE manufacturer](#):

Other Similar products are found below :

[622664A](#) [636116E](#) [748389C](#) [AS431ARTR-E1](#) [NCP431BCSNT1G](#) [NCP432BCSNT1G](#) [NCV431BSNT1G](#) [AP4313UKTR-G1](#)
[TL1431AIYDT](#) [AZ431BR-ATRE1](#) [622668D](#) [NCP432BVSNT1G](#) [5962-8686103XC](#) [NCV431BVDMR2G](#) [AZ432BNTR-G1](#)
[AP4306BUKTR-G1](#) [SC431BVSNT1G](#) [MAX6023EBT30+T](#) [NCV431ASNT1G](#) [LM4040CEM3-5.0/V+T](#) [LT1460KCS3-3#TRM](#)
[LT1460KCS3-3.3#TRM](#) [LT6660KCDC-10#TRMPBF](#) [LTC6652BHLS8-5#PBF](#) [LTC6652AHLS8-4.096#PBF](#) [LTC6655BHLS8-4.096#PBF](#)
[LT6660HCDC-5#TRMPBF](#) [LM336Z-2.5#PBF](#) [LT1021BMH-10](#) [SC431ILPRAG](#) [TLVH431MIL3T](#) [MAX6023EBT21+T](#) [AP432AQG-7](#)
[ADR4540CRZ](#) [LM4040B25QFTA](#) [TS3325AQPR](#) [REF102AU/2K5](#) [TL4050B25QDBZR](#) [TL4051C12QDCKR](#) [TL431ACZ](#) [KA431SLMF2TF](#)
[KA431SMF2TF](#) [KA431SMFTF](#) [LM385BXZ/NOPB](#) [LM4040QCEM3-3.0/NOPB](#) [LM4041C12ILPR](#) [LM4050AEM3X-5.0/NOPB](#)
[LM4050AIM3X-5.0/NOPB](#) [LM4120AIM5-2.5/NOP](#) [LM431SCCMFX](#)