

## Quick Reference

# BRKT-STBC-AGM04

Sensor Toolbox Development Platform for  
MMA8652FC 3-axis digital accelerometer,  
FXAS21002C 3-axis digital angular rate gyroscope, and  
MAG3110 3-axis digital magnetometer

SENSOR TOOLBOX BREAKOUT BOARD

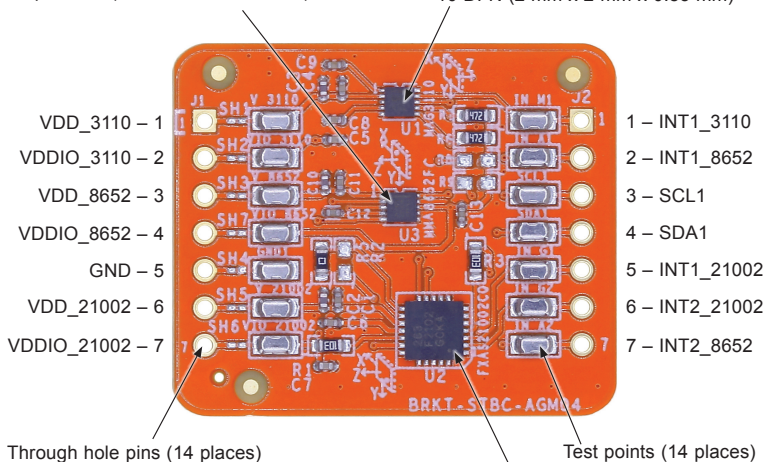


## Quick Reference

### GET TO KNOW THE BRKT-STBC-AGM04

MMA8652FC 3-axis, 12-bit,  
digital accelerometer  
10-pin DFN (2 mm x 2 mm x 1 mm)

MAG3110 3-axis, digital magnetometer  
10 DFN (2 mm x 2 mm x 0.85 mm)



FXAS21002C 3-axis digital angular rate gyroscope  
24 QFN (4 mm x 4 mm x 1 mm)

## HOW TO GET STARTED

Find additional information in the breakout board section of

[nxp.com/sensortoolbox](http://nxp.com/sensortoolbox)

- Schematics
- Layout design
- Documentation

The FRDM-STBC-AGM04 extends this breakout board with broad demo and development capabilities.

- Software development platform
- Graphical tools

[www.nxp.com](http://www.nxp.com)

NXP and the NXP logo are trademarks of NXP B.V. All other product or service names are the property of their respective owners. © 2016 NXP B.V.

Document Number: BRKT-STBC-AGM04\_QRC REV 0  
Agile Number: 920-29414 REV A



## X-ON Electronics

Largest Supplier of Electrical and Electronic Components

*Click to view similar products for [Acceleration Sensor Development Tools](#) category:*

*Click to view products by [NXP](#) manufacturer:*

Other Similar products are found below :

[2019](#) [EVAL-ADXL343Z-S](#) [BRKOUT-FXLN8362Q](#) [MXC6655XA-B](#) [1018](#) [EVAL-ADXL362-ARDZ](#) [EVAL-KXTJ2-1009](#) [1231](#) [1413](#) [DEV-13629](#) [2020](#) [EVAL-ADXL343Z-DB](#) [EVAL-ADXL344Z-M](#) [EVAL-ADXL375Z-S](#) [EV-BUNCH-WSN-1Z](#) [EV-CLUSTER-WSN-2Z](#) [STEVAL-MKI033V1](#) [EVAL-ADXL344Z-DB](#) [EVAL-ADXL346Z-DB](#) [EVAL-ADXL363Z-MLP](#) [EV-CLUSTER-WSN-1Z](#) [ADIS16203/PCBZ](#) [EVAL-ADXL312Z](#) [EVAL-ADXL343Z](#) [EVAL-ADXL344Z-S](#) [EVAL-ADXL363Z-S](#) [EVAL-ADXL375Z](#) [STEVALMKI032V1](#) [DFR0143](#) [SEN0032](#) [SEN0079](#) [SEN0168](#) [SEN0224](#) [MXD6240AU-B](#) [FIT0031](#) [SEN-13963](#) [MXP7205VW-B](#) [ASD2511-R-A](#) [3463](#) [SEN0140](#) [SEN0183](#) [SEN-11446](#) [EVAL-KX022-1020](#) [EVAL-KX023-1025](#) [163](#) [2809](#) [4097](#) [4344](#) [4627](#) [4626](#)