

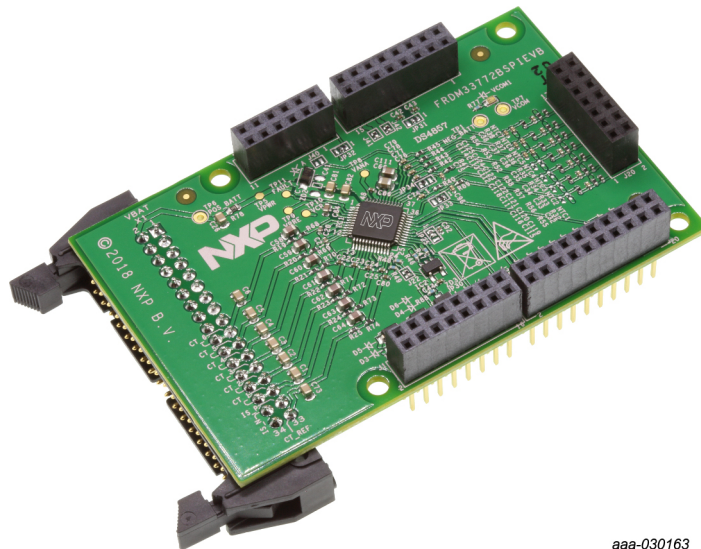
# FRDM33772BSPIEBV

Featuring the MC33772B battery cell controller IC

Rev. 1.0 — 22 June 2018

User guide

## 1 FRDM33772BSPIEBV



aaa-030163



## 2 Important notice

NXP provides the enclosed product(s) under the following conditions:

This evaluation kit is intended for use of ENGINEERING DEVELOPMENT OR EVALUATION PURPOSES ONLY. It is provided as a sample IC pre-soldered to a printed circuit board to make it easier to access inputs, outputs, and supply terminals. This evaluation board may be used with any development system or other source of I/O signals by simply connecting it to the host MCU or computer board via off-the-shelf cables. This evaluation board is not a Reference Design and is not intended to represent a final design recommendation for any particular application. Final device in an application will be heavily dependent on proper printed circuit board layout and heat sinking design as well as attention to supply filtering, transient suppression, and I/O signal quality.

The goods provided may not be complete in terms of required design, marketing, and or manufacturing related protective considerations, including product safety measures typically found in the end product incorporating the goods. Due to the open construction of the product, it is the user's responsibility to take any and all appropriate precautions with regard to electrostatic discharge. In order to minimize risks associated with the customers applications, adequate design and operating safeguards must be provided by the customer to minimize inherent or procedural hazards. For any safety concerns, contact NXP sales and technical support services.

Should this evaluation kit not meet the specifications indicated in the kit, it may be returned within 30 days from the date of delivery and will be replaced by a new kit.

NXP reserves the right to make changes without further notice to any products herein. NXP makes no warranty, representation or guarantee regarding the suitability of its products for any particular purpose, nor does NXP assume any liability arising out of the application or use of any product or circuit, and specifically disclaims any and all liability, including without limitation consequential or incidental damages. "Typical" parameters can and do vary in different applications and actual performance may vary over time. All operating parameters, including "Typical", must be validated for each customer application by customer's technical experts.

NXP does not convey any license under its patent rights nor the rights of others. NXP products are not designed, intended, or authorized for use as components in systems intended for surgical implant into the body, or other applications intended to support or sustain life, or for any other application in which the failure of the NXP product could create a situation where personal injury or death may occur.

Should the Buyer purchase or use NXP products for any such unintended or unauthorized application, the Buyer shall indemnify and hold NXP and its officers, employees, subsidiaries, affiliates, and distributors harmless against all claims, costs, damages, and expenses, and reasonable attorney fees arising out of, directly or indirectly, any claim of personal injury or death associated with such unintended or unauthorized use, even if such claim alleges NXP was negligent regarding the design or manufacture of the part. NXP and the NXP logo are trademarks of NXP B.V. All other product or service names are the property of their respective owners. © 2018 NXP B.V.

## 3 Getting started

The NXP analog product development boards provide an easy-to-use platform for evaluating NXP products. These development boards support a range of analog, mixed-signal, and power solutions. These boards incorporate monolithic integrated circuits and system-in-package devices that use proven high-volume technology. NXP products offer longer battery life, a smaller form factor, reduced component counts, lower cost, and improved performance in powering state-of-the-art systems.

The tool summary page for FRDM33772BSPIEBV is at [nxp.com/FRDM33772BSPIEBV](http://nxp.com/FRDM33772BSPIEBV). The overview tab on this page provides an overview of the device, a list of device features, a description of the kit contents, links to supported devices and a **Get Started** section.

The **Get Started** section provides information applicable to using the FRDM33772BSPIEBV.

1. Go to [nxp.com/FRDM33772BSPIEBV](http://nxp.com/FRDM33772BSPIEBV).
2. On the **Overview** tab, locate the **Jump To** navigation feature on the left side of the window.
3. Select the **Get Started** link.
4. Review each entry in the **Get Started** section.
5. Download an entry by clicking on the linked title.

After reviewing the **Overview** tab, visit the other related tabs for additional information:

- **Documentation:** Download current documentation.
- **Software & Tools:** Download current hardware and software tools.
- **Buy/Parametrics:** Purchase the product and view the product parametrics.

After downloading files, review each file, including the user guide, which includes setup instructions. If applicable, the Bill of Materials (BOM), supporting schematics, and layout are available via NXP DocStore. [6]

### 3.1 Kit contents/packing list

The kit contents include:

- Assembled and tested evaluation board/module in anti-static bag
- Quick-start guide

### 3.2 Required equipment

To use this kit, you need:

- A 3- to 6-cell battery pack, such as BATT-14AAAPACK, or a battery pack emulator, such as BATT-6EMULATOR

## 4 Getting to know the hardware

### 4.1 Board overview

The FRDM33772BSPIEBV serves as a hardware evaluation tool in support of NXP's MC33772B device. The MC33772B is a battery cell controller that monitors up to 6 lithium-ion battery cells. It is designed for use in both automotive and industrial

applications. The device performs ADC conversion on the differential cell voltages and currents. It is also capable of battery charge coulomb counting and battery temperature measurements. The FRDM33772BSPIEBV is an ideal platform for rapid prototyping of MC33772B-based applications that involve current, voltage, and temperature sensing.

The FRDM33772BSPIEBV supports standard SPI interface. The information is digitally transmitted to a microcontroller for processing.

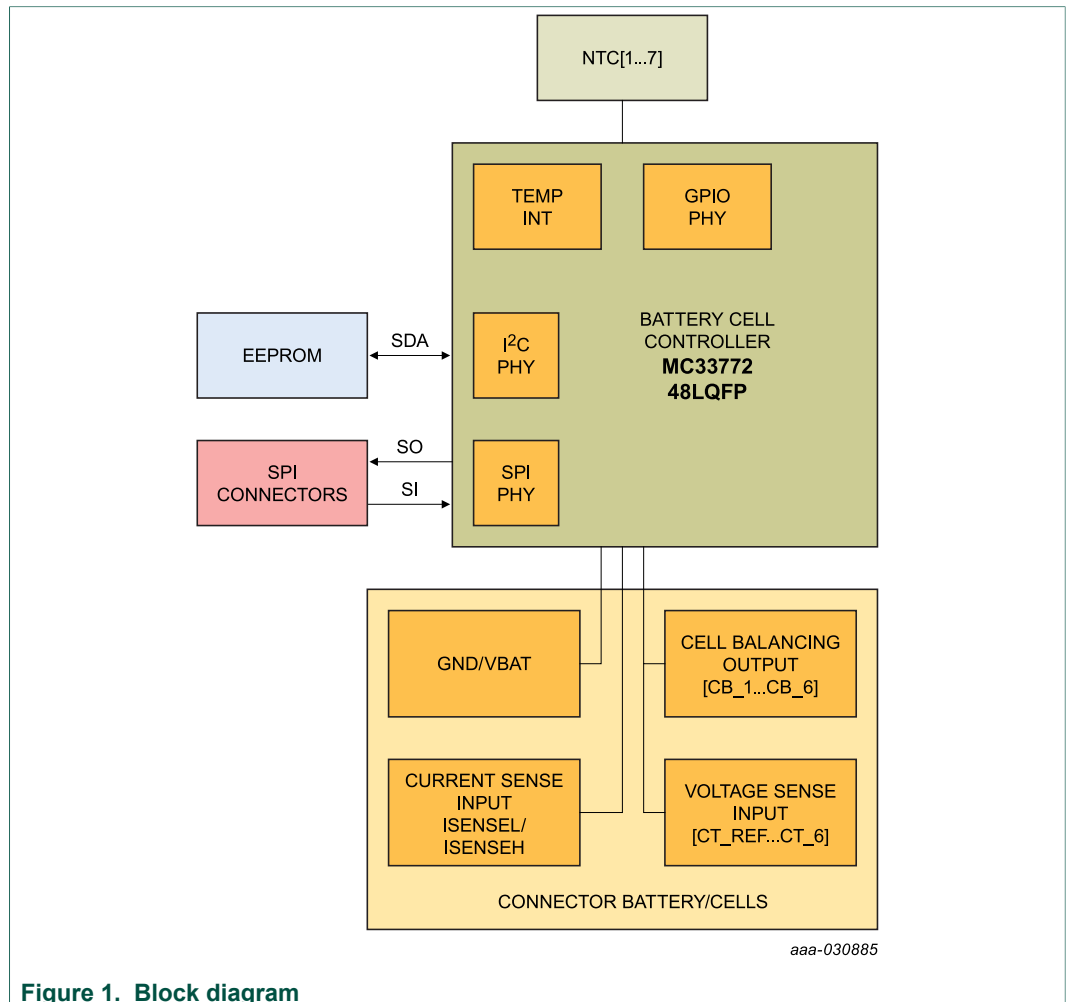
## 4.2 Board features

This FRDM33772BSPIEBV's main features are as follows:

- Standard SPI communication
- LED indicator for operation mode
- Cell-balancing resistors
- Cell sense input with RC filter
- GPIO: digital I/O, wake-up inputs, convert trigger inputs, ratiometric analog inputs, analog inputs with absolute measurements
- EEPROM (connected to the IC with I<sup>2</sup>C interface) to store user-defined calibration parameters
- Fault detection pin report
- Current Measurement Input via external shunt



## 4.3 Block diagram



## 4.4 Device features

The MC33772B is a battery cell controller IC designed to monitor battery characteristics, such as voltage, current and temperature. The MC33772B contains all the circuit blocks necessary to perform synchronous battery cell voltage/current measurement, coulomb counting, cell temperature measurement and integrated cell balancing. The device supports the following functions:

Table 1. MC33772B device features

Device	Description	Features
MC33772B	Battery cell controller	<ul style="list-style-type: none"><li>• 5.0 V ≤ VPWR ≤ 30 V operation, 40 V transient</li><li>• 3 to 6 cells management</li><li>• 0.8 mV total cell voltage measurement error</li><li>• Isolated 2.0 Mbps differential communication or 4.0 Mbps SPI</li><li>• Addressable on initialization</li><li>• Synchronized cell voltage/current measurement with coulomb count</li><li>• Total stack voltage measurement</li><li>• Seven GPIO/temperature sensor inputs</li><li>• 5.0 V reference supply output with 5 mA capability</li><li>• Automatic over/undervoltage and temperature detection routable to fault pin</li><li>• Integrated sleep mode over/undervoltage and temperature monitoring</li><li>• Onboard 300 mA passive cell balancing with diagnostics</li><li>• Hot plug capable</li><li>• Detection of internal and external faults, as open lines, shorts, and leakages</li><li>• Designed to support ISO 26262 up to ASIL D safety system</li><li>• Fully compatible with the MC33772 for a maximum of 14 cells</li><li>• Qualified in compliance with AEC-Q100</li></ul>

4.5 Board description

The FRDM33772BSPIEBV allows the user to exercise all the functions of the MC33772B battery controller cell.

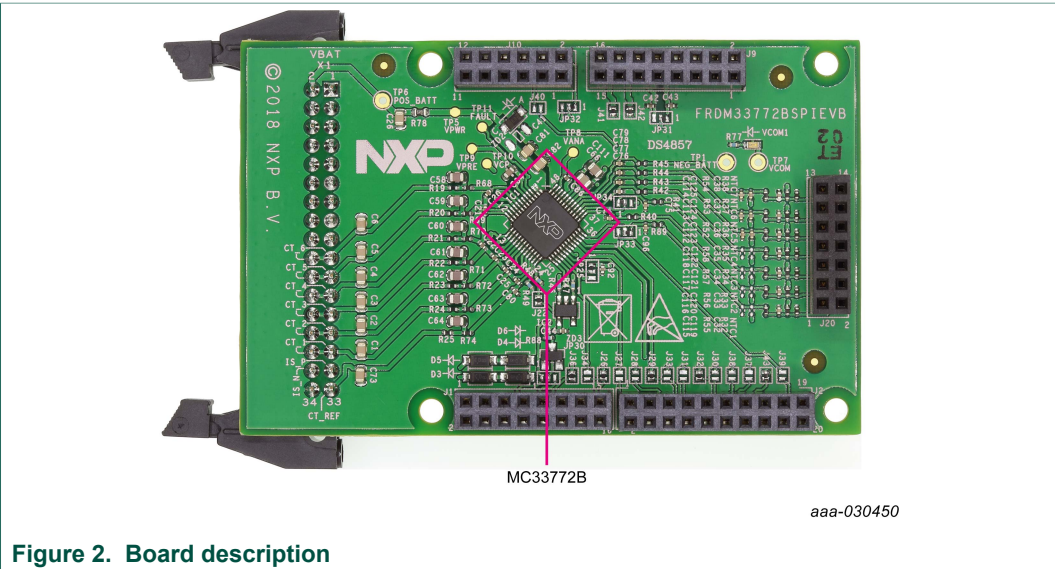


Table 2. Board description

Name	Description
MC33772B	Battery-cell controller IC

4.6 VCOM LED

The VCOM LED is located on the board as shown in [Figure 3](#).

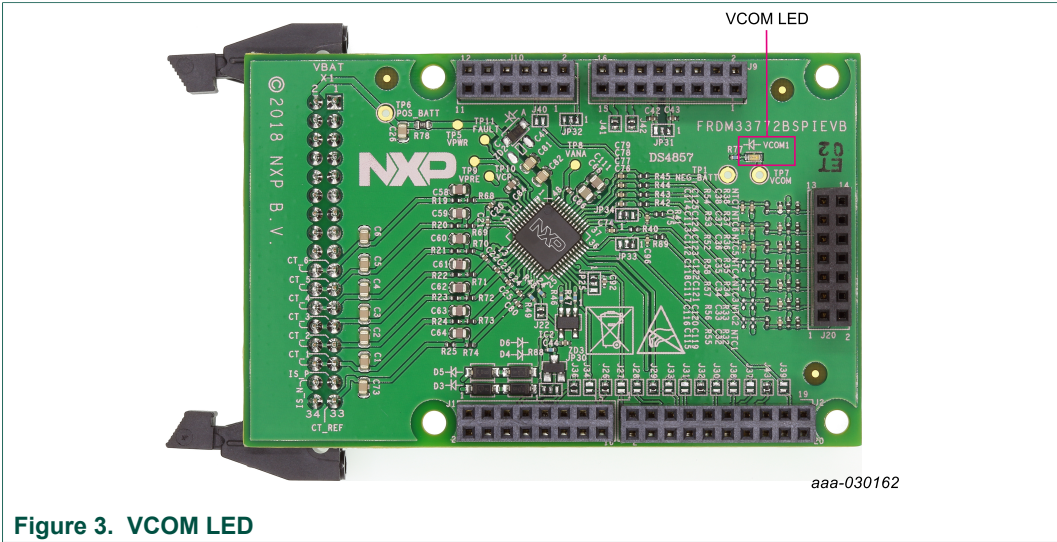


Figure 3. VCOM LED

The VCOM LED indicates when the device is in normal mode. Upon reset, the MC33772B enters into normal mode (VCOM turns on). If there is no activity on the bus after a timeout period of 60 seconds, the device enters low-power idle mode (VCOM turns off). Once the device is initialized, if no communication occurs on the bus after one second, the device resets and the LED turns off (VCOM off). Depending on the device settings, the VCOM LED may flash 0.1...8 seconds during cyclic acquisition.

4.7 Test-point definitions

Figure 4 shows the location of the test points on the board.

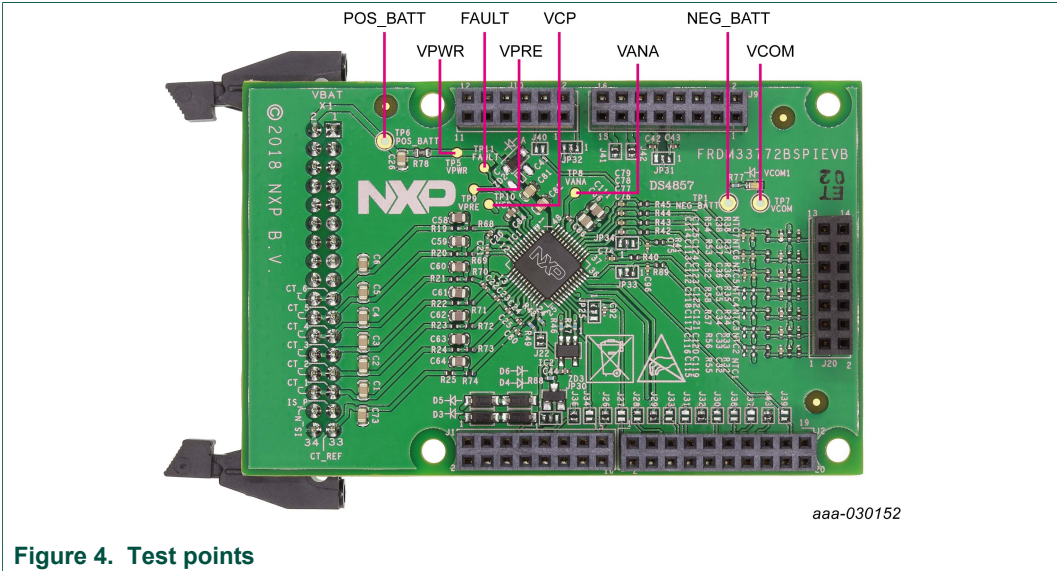


Figure 4. Test points

The following test points provide access to various signals to and from the board.

Table 3. Test points

Test-point name	Signal name	Description
FAULT	FAULT	Measures the fault detection sent by the device
NEG_BAT	GNDREF	Ground reference of the device

Test-point name	Signal name	Description
POS_BAT	V <sub>BAT</sub>	Positive V <sub>BAT</sub>
VPWR	VPWR	Power input to the device
VANA	VANA	Precision ADC analog supply output
VCOM	VCOM	Communication regulator output
VCP	VCP	VCP regulator output
VPRE	VPRE	VPRE regulator output

## 4.8 Connectors

Figure 5 shows the location of connectors on the board. The following tables list the pinouts for each connector.

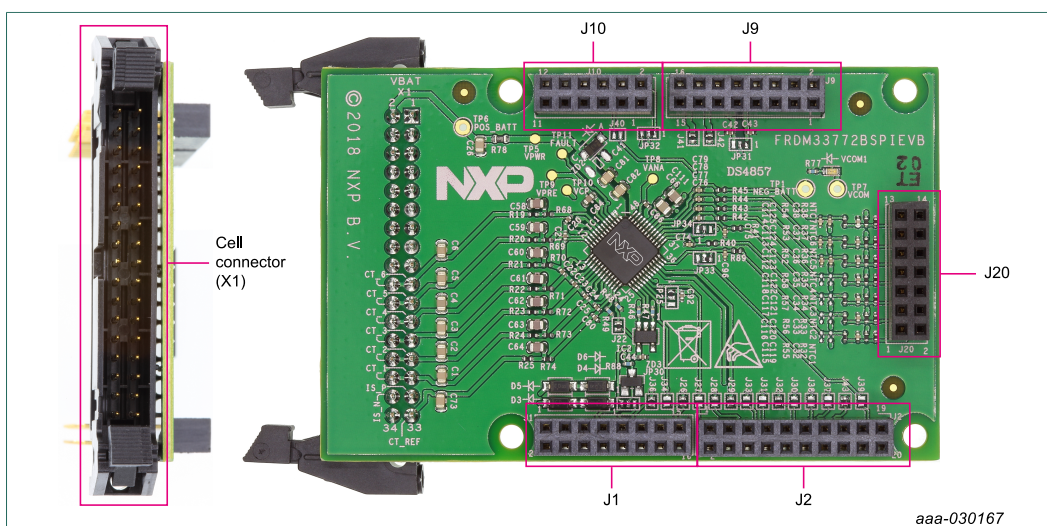


Figure 5. Connectors

Table 4. Cell connector (X1)

Pin #	Connection	Description
X1-2	V <sub>BAT</sub>	MC33772B Power supply
X1-19	CT_6	Cell pin 6 input with external LPF resistor.
X1-20	CB_6	Cell balance driver. Terminate to cell 6 cell balance load resistor
X1-21	CT_5	Cell pin 5 input with external LPF resistor.
X1-22	CB_6:5_C	Cell balance 6:5 common. Terminate to cell 6 and 5 common pin
X1-23	CT_4	Cell pin 4 input with external LPF resistor.
X1-24	CB_5/CB_4	Cell balance driver. Terminate to cell 5 and 4 cell balance load resistor
X1-25	CT_3	Cell pin 3 input with external LPF resistor.
X1-26	CB_4:3_C	Cell balance 4:3 common. Terminate to cell 4 and 3 common pin
X1-27	CT_2	Cell pin 2 input with external LPF resistor.
X1-28	CB_3/CB_2	Cell balance driver. Terminate to cell 3 and 2 cell balance load resistor
X1-29	CT_1	Cell pin 1 input with external LPF resistor.
X1-30	CB_2:1_C	Cell balance 2:1 common. Terminate to cell 2 and 1 common pin

Pin #	Connection	Description
X1-31	ISENSE_P	Current measurement input+ with external filter RC
X1-32	ISENSE_N	Current measurement input- with external filter RC
X1-33	CT_REF CB_1	Cell pin REF input with external LPF resistor. Cell balance driver. Terminate to cell 1 cell balance load resistor.
X1-34	GND	Negative_Battery

#### 4.9 External EEPROM

The FRDM33772BSPIEBV has an integrated gateway communication link to an external local EEPROM. The MC33772B's I<sup>2</sup>C Communication Interface manages communication with the EEPROM.

After a reset, the EEPROM is not enabled. When the EEPROM is enabled, the device can load the EEPROM calibration parameters into the MC33772B registers.

#### 4.10 GPIO configuration

The FRDM33772BSPIEBV offers seven customizable GPIOs [GPIO\_0...GPIO\_6] for measuring external temperature with a bridge divider. [GPIO\_0] can be used as the input for wake-up or fault daisy chain.

#### 4.11 Cell terminal voltage measurement

The differential measurement of each cell terminal input is designed to function in conjunction with an external low path filter.

#### 4.12 Current sensing

The FRDM33772BSPIEBV supports current sense function with off-board shunt resistor. The off-board shunt resistor shall be connected between X1-31 (IS\_P) and X1-32 (IS\_N). On-board current sensing filter and protection circuits can be found in EVB schematic shared via NXP DocStore (NDA required).

#### 4.13 SPI communication interface

The MC33772B SPI interface is a standard SPI slave interface with a chip select (CSB), clock (SCLK), Slave Out (SO), and Slave In (SI). The SI/SO shifting of the data follows a first-in-first-out protocol, with both input and output words transferring the Most Significant Bit (MSB) first.

All SPI communication to the MC33772B is controlled by the microcontroller. One 40-bit register of previously requested data is retrieved through serial out for each current serial in message sent by the MCU. For message integrity and communication robustness, each SPI transmit message consists of six fields containing 40 bits.

The six transmit fields are defined as the following:

1. Cyclical redundancy check (8 bits)
2. Command field (4 bits)
3. Cluster ID field (4 bits)
4. Memory address field (7 bits)



5. Master/slave field (1 bit)
6. Memory data field (16 bits)

Messages having less or more than 40 bits or incorrect CRC are disregarded. Communication faults set the COM\_ERR\_FLT fault bit in the FAULT1\_STATUS register and increments the COM\_STATUS[COM\_ERR\_COUNT] register.

Detailed schematic, component selection, and layout recommendations can be obtained from the NXP DocStore (NDA required) [6].

## 5 Configuring the hardware

The FRDM33772BSPIEBV can be configured as a shield board connected to selected Freedom boards.

### 5.1 Compatible NXP MCU development platforms

FRDM33772BSPIEBV is compatible with multiple NXP MCU development platforms:

- FRDM-KL25Z (default)
- FRDM-KE06Z
- FRDM-KL43Z
- FRDM-KV31F
- FRDM-KW40Z
- FRDM-KEAZ128
- S32K144EVB
- Arduino R3

MCU development platform ordering, instruction, and other information is on [nxp.com](http://nxp.com).

**Table 5. Jumper setting to work with FRDM-KL25Z (default)**

Jumper	Setting	Description
J22	1-2	RESET
J26	1-2	CSB
J27	open	—
J28	open	—
J29	1-2	MOSI
J30	open	—
J31	open	—
J32	1-2	MISO
J33	open	—
J34	open	—
J36	1-2	SLCK
J37	open	—
J38	open	—
J41	1-2	GND

Jumper	Setting	Description
J42	1-2	GND
JP25	1-2	VDDIO
JP30	1-2	FAULT
JP31	1-2	3.3 V
JP32	1-2	RESET

Table 6. Jumper Setting to Work with FRDM-KE06Z

Jumper	Setting	Description
J22	1-2	RESET
J26	open	—
J27	1-2	CSB
J28	open	—
J29	1-2	MOSI
J30	open	—
J31	open	—
J32	open	—
J33	open	—
J34	1-2	MISO
J36	open	—
J37	1-2	SLCK
J38	open	—
J41	open	—
J42	open	—
JP25	1-2	VDDIO
JP30	2-3	FAULT
JP31	1-2	3.3 V
JP32	2-3	RESET

Table 7. Jumper Setting to Work with FRDM-KL43Z

Jumper	Setting	Description
J22	1-2	RESET
J26	open	—
J27	1-2	CSB
J28	open	—

Jumper	Setting	Description
J29	1-2	MOSI
J30	open	—
J31	open	—
J32	1-2	MISO
J33	open	—
J34	open	—
J36	open	—
J37	1-2	SLCK
J38	open	—
J41	open	—
J42	open	—
JP25	1-2	VDDIO
JP30	2-3	FAULT
JP31	1-2	3.3 V
JP32	2-3	RESET

Table 8. Jumper Setting to Work with FRDM-KV31F

Jumper	Setting	Description
J22	1-2	RESET
J26	open	—
J27	1-2	CSB
J28	open	—
J29	1-2	MOSI
J30	open	—
J31	open	—
J32	1-2	MISO
J33	open	—
J34	open	—
J36	open	—
J37	1-2	SLCK
J38	open	—
J41	open	—
J42	open	—
JP25	1-2	VDDIO



Jumper	Setting	Description
JP30	2-3	FAULT
JP31	1-2	3.3 V
JP32	2-3	RESET

Table 9. Jumper Setting to Work with FRDM-KW40Z

Jumper	Setting	Description
J22	1-2	RESET
J26	1-2	CSB
J27	open	—
J28	open	—
J29	open	—
J30	1-2	MOSI
J31	open	—
J32	open	—
J33	1-2	MISO
J34	open	—
J36	open	—
J37	1-2	SLCK
J38	open	—
J41	open	—
J42	open	—
JP25	1-2	VDDIO
JP30	2-3	FAULT
JP31	1-2	3.3 V
JP32	2-3	RESET

Table 10. Jumper Setting to Work with FRDM-KEAZ128

Jumper	Setting	Description
J22	1-2	RESET
J26	open	—
J27	1-2	CSB
J28	open	—
J29	1-2	MOSI
J30	open	—

Jumper	Setting	Description
J31	open	—
J32	1-2	MISO
J33	open	—
J34	open	—
J36	open	—
J37	1-2	SLCK
J38	open	—
J41	open	—
J42	open	—
JP25	1-2	VDDIO
JP30	1-2	FAULT
JP31	1-2	3.3 V
JP32	2-3	RESET

Table 11. Jumper Setting to Work with S32K144EVB

Jumper	Setting	Description
J22	1-2	RESET
J26	open	—
J27	1-2	CSB
J28	open	—
J29	1-2	MOSI
J30	open	—
J31	open	—
J32	1-2	MISO
J33	open	—
J34	open	—
J36	open	—
J37	1-2	SLCK
J38	open	—
J41	open	—
J42	open	—
JP25	1-2	VDDIO
JP30	2-3	FAULT
JP31	2-3	5 V

Jumper	Setting	Description
JP32	2-3	RESET

**Table 12. Jumper Setting to Work with Arduino R3**

Arduino R3 has a single-line connector that connects to the outer row of the FRDM33772BSPIEBV connectors.

Jumper	Setting	Description
J22	1-2	RESET
J26	open	—
J27	1-2	CSB
J28	open	—
J29	1-2	MOSI
J30	open	—
J31	open	—
J32	1-2	MISO
J33	open	—
J34	open	—
J36	open	—
J37	1-2	SLCK
J38	open	—
J41	open	—
J42	open	—
JP25	1-2	VDDIO
JP30	2-3	FAULT
JP31	1-2	3.3 V
JP32	2-3	RESET

## 5.2 Freedom board configuration

The layout of the connectors allow MCU development boards mentioned in [Section 5.1 "Compatible NXP MCU development platforms"](#) to be mounted directly to the FRDM33772BSPIEBV. See [Figure 6](#). When both boards are connected together, the SPI connector is directly connected with the MCU SPI pins. The routing of SPI signals through the Arduino connectors depends on the specific Freedom board being used. In this configuration, power is supplied to the FRDM33772BSPIEBV through a USB cable connected between the Freedom board and a PC. No external power supply is required.

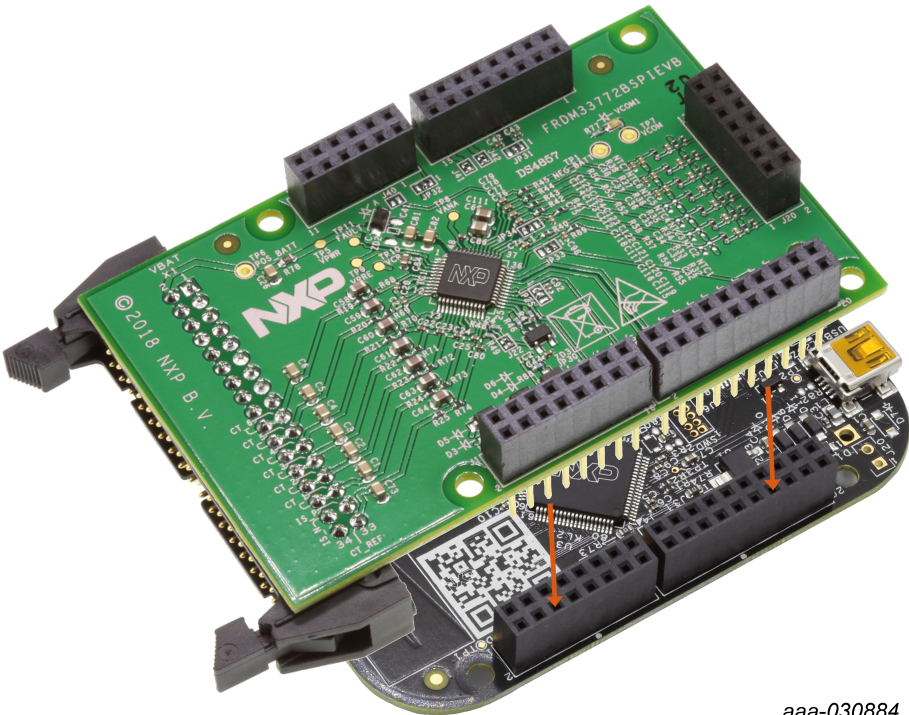


Figure 6. FRDM33772BSPIEBV mounted to a FRDM-KL25Z

The board must be modified to be compatible with each specific Freedom board. This modification is described in [Section 5.1 "Compatible NXP MCU development platforms"](#).

5.3 Off-board NTC configuration

FRDM33772BSPIEBV supports off-board NTC, please follow the instruction in the following table.

Table 13. Off-board NTC configuration

Temperature input	Remove	Connect off-board NTC between
GPIO0	NTC1	J20 1-2
GPIO1	NTC2	J20 3-4
GPIO2	NTC3	J20 5-6
GPIO3	NTC4	J20 7-8
GPIO4	NTC5	J20 9-10
GPIO5	NTC6	J20 11-13
GPIO6	NTC7	J20 13-14

6 Available accessories

**Note:** NXP does not assume liability, endorse, or warrant components from external manufacturers are referenced in circuit drawings or tables. While NXP offers component recommendations in this configuration, it is the customer's responsibility to validate their application.

Table 14. Bill of materials

Part number	Description
M50-9101742	34-pin ribbon cable
BATT-14AAAPACK	3- to 14-cell configurable AAA battery pack
BATT-6EMULATOR	6-cell slider battery pack emulator kit with shunt for current sense

## 7 References

- [1] Board summary page — [nxp.com/FRDM33772BSPIEBV](http://nxp.com/FRDM33772BSPIEBV)
- [2] Product summary page — [nxp.com/BATTERY-CELL-CONTROLLERS](http://nxp.com/BATTERY-CELL-CONTROLLERS)
- [3] Tool summary page — [nxp.com/FRDM33664BEVB](http://nxp.com/FRDM33664BEVB)
- [3] Tool summary page for BATT-14AAAPACK battery pack — [nxp.com/BATT-14AAAPACK](http://nxp.com/BATT-14AAAPACK)
- [5] Tool summary page for battery emulators — [nxp.com/BATT-6EMULATOR](http://nxp.com/BATT-6EMULATOR)
- [6] NXP DocStore — [docstore.nxp.com](http://docstore.nxp.com)

## 8 Revision history

Table 15. Revision history

Rev	Date	Description
v.1.0	20180622	Initial release

## 9 Legal information

### 9.1 Definitions

**Draft** — The document is a draft version only. The content is still under internal review and subject to formal approval, which may result in modifications or additions. NXP Semiconductors does not give any representations or warranties as to the accuracy or completeness of information included herein and shall have no liability for the consequences of use of such information.

### 9.2 Disclaimers

**Limited warranty and liability** — Information in this document is believed to be accurate and reliable. However, NXP Semiconductors does not give any representations or warranties, expressed or implied, as to the accuracy or completeness of such information and shall have no liability for the consequences of use of such information. NXP Semiconductors takes no responsibility for the content in this document if provided by an information source outside of NXP Semiconductors. In no event shall NXP Semiconductors be liable for any indirect, incidental, punitive, special or consequential damages (including - without limitation - lost profits, lost savings, business interruption, costs related to the removal or replacement of any products or rework charges) whether or not such damages are based on tort (including negligence), warranty, breach of contract or any other legal theory. Notwithstanding any damages that customer might incur for any reason whatsoever, NXP Semiconductors' aggregate and cumulative liability towards customer for the products described herein shall be limited in accordance with the Terms and conditions of commercial sale of NXP Semiconductors.

**Right to make changes** — NXP Semiconductors reserves the right to make changes to information published in this document, including without limitation specifications and product descriptions, at any time and without notice. This document supersedes and replaces all information supplied prior to the publication hereof.

**Applications** — Applications that are described herein for any of these products are for illustrative purposes only. NXP Semiconductors makes no representation or warranty that such applications will be suitable for the specified use without further testing or modification. Customers are responsible for the design and operation of their applications and products using NXP Semiconductors products, and NXP Semiconductors accepts no liability for any assistance with applications or customer product design. It is customer's sole responsibility to determine whether the NXP Semiconductors product is suitable and fit for the customer's applications and products planned, as well as for the planned application and use of customer's third party customer(s). Customers should provide appropriate design and operating safeguards to minimize the risks associated with their applications and products. NXP Semiconductors does not accept any liability related to any default, damage, costs or problem which is based on any weakness or default in the customer's applications or products, or the application or use by customer's third party customer(s). Customer is

responsible for doing all necessary testing for the customer's applications and products using NXP Semiconductors products in order to avoid a default of the applications and the products or of the application or use by customer's third party customer(s). NXP does not accept any liability in this respect.

**Export control** — This document as well as the item(s) described herein may be subject to export control regulations. Export might require a prior authorization from competent authorities.

**Safety of high-voltage evaluation products** — The non-insulated high voltages that are present when operating this product, constitute a risk of electric shock, personal injury, death and/or ignition of fire. This product is intended for evaluation purposes only. It shall be operated in a designated test area by personnel that is qualified according to local requirements and labor laws to work with non-insulated mains voltages and high-voltage circuits. The product does not comply with IEC 60950 based national or regional safety standards. NXP Semiconductors does not accept any liability for damages incurred due to inappropriate use of this product or related to non-insulated high voltages. Any use of this product is at customer's own risk and liability. The customer shall fully indemnify and hold harmless NXP Semiconductors from any liability, damages and claims resulting from the use of the product.

**Translations** — A non-English (translated) version of a document is for reference only. The English version shall prevail in case of any discrepancy between the translated and English versions.

**Suitability for use in automotive applications** — The use of this NXP Semiconductors product is restricted to automotive applications only. It has not been fully qualified for use in automotive applications. The customer of this NXP Semiconductors product therefore understands and accepts that: The Customer shall only use this NXP Semiconductors product for automotive applications. This product was not originally designed for automotive use. It will therefore, not be possible to achieve the levels of quality and failure analysis that are normally associated with products explicitly designed for automotive use. With respect to test-coverage, this product is not fully compliant to AEC-Q100. All product manufacturing locations are certified according to ISO/TS16949. Unless otherwise agreed in writing, the product is not designed, authorized or warranted to be suitable for use in life support, life-critical or safety-critical systems or equipment, nor in applications where failure or malfunction of an NXP Semiconductors product can reasonably be expected to result in personal injury, death or severe property or environmental damage. NXP Semiconductors and its suppliers accept no liability for inclusion and/or use of NXP Semiconductors products in such equipment or applications and therefore such inclusion and/or use is at the customer's own risk.

### 9.3 Trademarks

Notice: All referenced brands, product names, service names and trademarks are the property of their respective owners.

## Tables

Tab. 1.	MC33772B device features .....	6	Tab. 9.	Jumper Setting to Work with FRDM-KW40Z ....	13
Tab. 2.	Board description .....	6	Tab. 10.	Jumper Setting to Work with FRDM-KEAZ128 .....	13
Tab. 3.	Test points .....	7	Tab. 11.	Jumper Setting to Work with S32K144EVB ....	14
Tab. 4.	Cell connector (X1) .....	8	Tab. 12.	Jumper Setting to Work with Arduino R3 .....	15
Tab. 5.	Jumper setting to work with FRDM-KL25Z (default) .....	10	Tab. 13.	Off-board NTC configuration .....	16
Tab. 6.	Jumper Setting to Work with FRDM-KE06Z ....	11	Tab. 14.	Bill of materials .....	17
Tab. 7.	Jumper Setting to Work with FRDM-KL43Z ....	11	Tab. 15.	Revision history .....	17
Tab. 8.	Jumper Setting to Work with FRDM-KV31F ....	12			

## Figures

Fig. 1.	Block diagram .....	5	Fig. 5.	Connectors .....	8
Fig. 2.	Board description .....	6	Fig. 6.	FRDM33772BSPIEBV mounted to a FRDM-KL25Z .....	16
Fig. 3.	VCOM LED .....	7			
Fig. 4.	Test points .....	7			

## Contents

<b>1</b>	<b>FRDM33772BSPIEBV .....</b>	<b>1</b>
<b>2</b>	<b>Important notice .....</b>	<b>2</b>
<b>3</b>	<b>Getting started .....</b>	<b>3</b>
3.1	Kit contents/packing list .....	3
3.2	Required equipment .....	3
<b>4</b>	<b>Getting to know the hardware .....</b>	<b>3</b>
4.1	Board overview .....	3
4.2	Board features .....	4
4.3	Block diagram .....	5
4.4	Device features .....	5
4.5	Board description .....	6
4.6	VCOM LED .....	6
4.7	Test-point definitions .....	7
4.8	Connectors .....	8
4.9	External EEPROM .....	9
4.10	GPIO configuration .....	9
4.11	Cell terminal voltage measurement .....	9
4.12	Current sensing .....	9
4.13	SPI communication interface .....	9
<b>5</b>	<b>Configuring the hardware .....</b>	<b>10</b>
5.1	Compatible NXP MCU development platforms .....	10
5.2	Freedom board configuration .....	15
5.3	Off-board NTC configuration .....	16
<b>6</b>	<b>Available accessories .....</b>	<b>16</b>
<b>7</b>	<b>References .....</b>	<b>17</b>
<b>8</b>	<b>Revision history .....</b>	<b>17</b>
<b>9</b>	<b>Legal information .....</b>	<b>18</b>

Please be aware that important notices concerning this document and the product(s) described herein, have been included in section 'Legal information'.

© NXP B.V. 2018.

All rights reserved.

For more information, please visit: <http://www.nxp.com>

For sales office addresses, please send an email to: [salesaddresses@nxp.com](mailto:salesaddresses@nxp.com)

Date of release: 22 June 2018

Document identifier: FRDM33772BSPIEBUG



## X-ON Electronics

Largest Supplier of Electrical and Electronic Components

*Click to view similar products for* [Power Management IC Development Tools](#) *category:*

*Click to view products by* [NXP](#) *manufacturer:*

Other Similar products are found below :

[EVAL-ADM1168LQEBZ](#) [EVB-EP5348UI](#) [MIC23451-AAAYFL EV](#) [MIC5281YMME EV](#) [DA9063-EVAL](#) [ADP122-3.3-EVALZ](#) [ADP130-0.8-EVALZ](#) [ADP130-1.2-EVALZ](#) [ADP130-1.5-EVALZ](#) [ADP130-1.8-EVALZ](#) [ADP1712-3.3-EVALZ](#) [ADP1714-3.3-EVALZ](#) [ADP1715-3.3-EVALZ](#) [ADP1716-2.5-EVALZ](#) [ADP1740-1.5-EVALZ](#) [ADP1752-1.5-EVALZ](#) [ADP1828LC-EVALZ](#) [ADP1870-0.3-EVALZ](#) [ADP1871-0.6-EVALZ](#) [ADP1873-0.6-EVALZ](#) [ADP1874-0.3-EVALZ](#) [ADP1882-1.0-EVALZ](#) [ADP199CB-EVALZ](#) [ADP2102-1.25-EVALZ](#) [ADP2102-1.875EVALZ](#) [ADP2102-1.8-EVALZ](#) [ADP2102-2-EVALZ](#) [ADP2102-3-EVALZ](#) [ADP2102-4-EVALZ](#) [ADP2106-1.8-EVALZ](#) [ADP2147CB-110EVALZ](#) [AS3606-DB](#) [BQ24010EVM](#) [BQ24075TEVM](#) [BQ24155EVM](#) [BQ24157EVM-697](#) [BQ24160EVM-742](#) [BQ24296MEVM-655](#) [BQ25010EVM](#) [BQ3055EVM](#) [NCV891330PD50GEVB](#) [ISLUSBI2CKIT1Z](#) [LM2744EVAL](#) [LM2854EVAL](#) [LM3658SD-AEV/NOPB](#) [LM3658SDEV/NOPB](#) [LM3691TL-1.8EV/NOPB](#) [LM4510SDEV/NOPB](#) [LM5033SD-EVAL](#) [LP38512TS-1.8EV](#)