



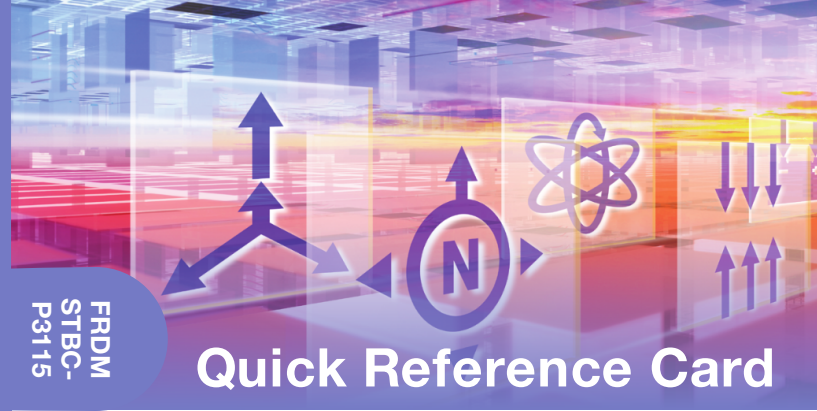
For more information,
visit [freescale.com/
sensortoolbox](http://freescale.com/sensortoolbox)

Freescale and the Freescale logo are
trademarks of Freescale Semiconductor, Inc.,
Reg. U.S. Pat. & Tm. Off. All other product
or service names are the property of their
respective owners.
© 2015 Freescale Semiconductor, Inc.
FRDMSTBCP3115ORC REV 1
920-28881 REV A

FRDM
STBC-
P3115

FRDMSTBC-P3115

FRDM
STBC-
P3115



Quick Reference Card

Pressure Sensor Toolbox Development Board
MPL3115A2 I²C precision altimeter sensor



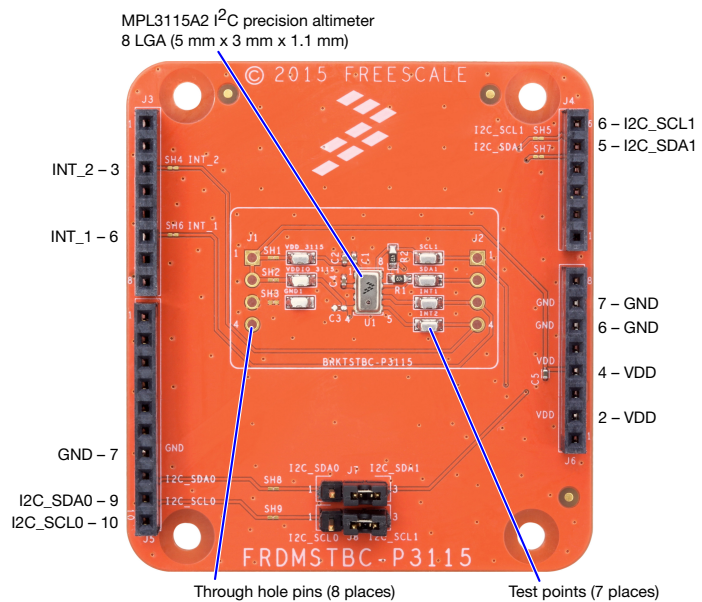
Get Started

Download tools and
documentation under
Jump-Start Your Design
at [freescale.com/
sensortoolbox](http://freescale.com/sensortoolbox)



FREESCALE FREEDOM PLATFORM

- 1 Verify package contents:
 - FRDMSTBC-P3115 development board
- 2 Connect the FRDMSTBC-P3115 development board to a Freescale Freedom development board, such as the FRDM-KL25Z (or any Arduino R3 compatible board). Refer to the Freescale Freedom development board Quick Start Guide for driver information.
- 3 Plug one end of a USB cable into the SDA port on the assembly. Plug the other end of the cable into the USB port on the computer.
- 4 Download and install the latest Sensor Toolbox software at: freescale.com/sensortoolbox
- 5 Start the Sensor Toolbox software.



Get to Know the FRDMSTBC-P3115



Learn more at freescale.com/sensortoolbox

X-ON Electronics

Largest Supplier of Electrical and Electronic Components

Click to view similar products for [Pressure Sensor Development Tools](#) category:

Click to view products by [NXP](#) manufacturer:

Other Similar products are found below :

[MPRSS0001PG00001CB](#) [1075](#) [MIKROE-2293](#) [166](#) [SEN0068](#) [EVALSHNBV01TOBO1](#) [MIKROE-2550](#) [SEN-09673](#) [SEN0066](#) [ASD2511-R-P](#) [DPP101G000](#) [DPP901G000](#) [2651](#) [3965](#) [4414](#) [4494](#) [4633](#) [4816](#) [NPA-201-EV](#) [EVAL-CN0289-EB1Z](#) [EVAL-CN0295-EB1Z](#) [SEN0251](#) [MPRLS0001PG0000SAB](#) [MPRLS0015PA0000SAB](#) [MPRLS0025PA00001AB](#) [MPRLS0300YG00001BB](#) [SEK001](#) [KP254PS2GOKITTOBO1](#) [KP215F1701PS2GOKITTOBO1](#) [KP236PS2GOKITTOBO1](#) [KP275PS2GOKITTOBO1](#) [MAXREFDES82#](#) [DPP101A000](#) [MERITREK](#) [MIKROE-3328](#) [MIKROE-3411](#) [MIKROE-3466](#) [MIKROE-3566](#) [MIKROE-3603](#) [MIKROE-4127](#) [MIKROE-4142](#) [MIKROE-4149](#) [MIKROE-4190](#) [MIKROE-4294](#) [MIKROE-1489](#) [MIKROE-1817](#) [MIKROE-1880](#) [MIKROE-2065](#) [MIKROE-2237](#) [MIKROE-3020](#)