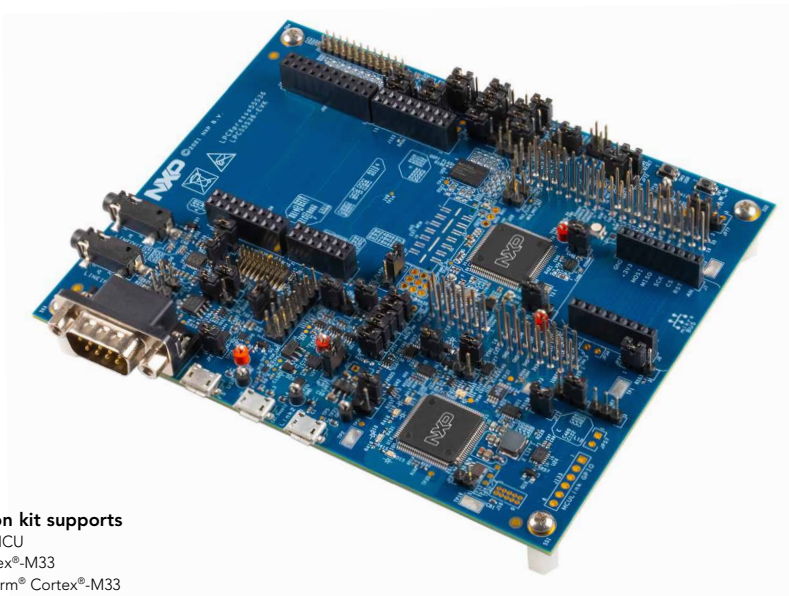




LPC5536-EVK



Evaluation kit supports

- LPC553x MCU
- Arm® Cortex®-M33
- 150 MHz Arm® Cortex®-M33
- Floating Point Unit (FPU) and Memory Protection Unit (MPU)
- Up to 256 KB on-chip flash program memory
- Up to 128 KB total SRAM

GET TO KNOW THE LPC5536-EVK

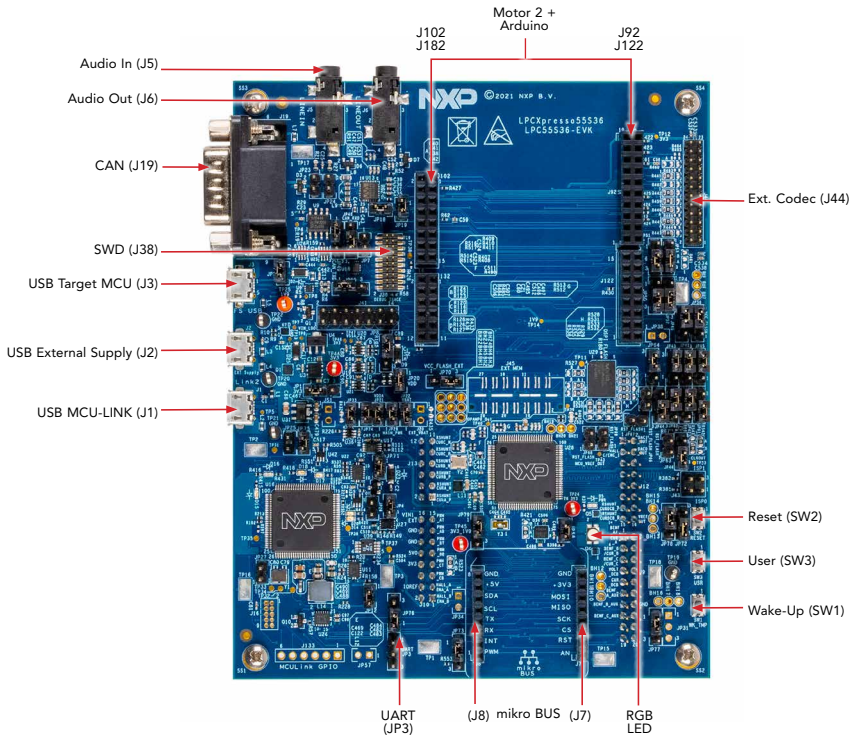


Figure 1: LPC5536-EVK Pin-Out

GET TO KNOW THE LPC5536-EVK CONTINUED

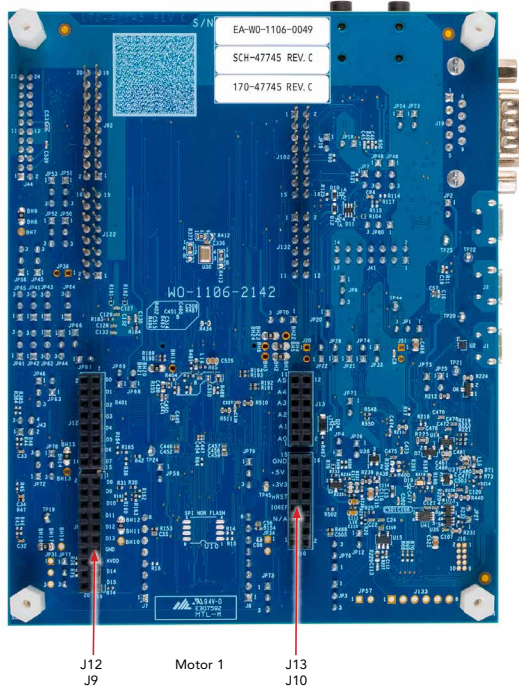
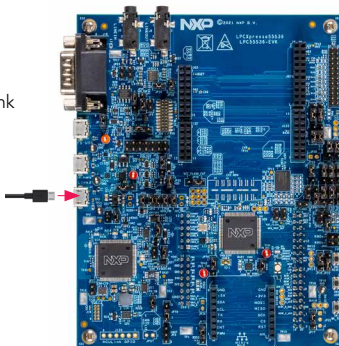


Figure 2: LPC5536-EVK Pin-Out

HOW TO GET STARTED

1. Connect the evaluation board to a PC using the included micro-USB cable to USB connector J1. When the board is powered up, LED D5 turns ON.
2. The LPC5536-EVK board comes preprogrammed with a demo that will blink each RGB LED three times. In addition, pressing SW1 will turn on the RED LED and pressing SW3 will turn on the GREEN LED. Connecting a micro-USB cable to J3 will enumerate a USB mouse device.
3. For more information on running the demo, access to additional examples and to download software and tools, please visit: www.nxp.com/LPC5536-EVK/startnow.



SUPPORT

Visit www.nxp.com/support for a list of phone numbers within your region.

WARRANTY

Visit www.nxp.com/warranty for complete warranty information.



Download installation software and documentation at www.nxp.com/LPC553x.

www.nxp.com/LPC553x

NXP and the NXP logo are trademarks of NXP B.V. All other product or service names are the property of their respective owners. Arm and Cortex are trademarks or registered trademarks of Arm Limited (or its subsidiaries) in the US and/or elsewhere. The related technology may be protected by any or all of patents, copyrights, designs and trade secrets. All rights reserved. © 2022 NXP B.V.

Document Number: LPC5536EVKQSG REV 0
Agile Number: 926-79041 Rev A

X-ON Electronics

Largest Supplier of Electrical and Electronic Components

Click to view similar products for [Development Boards & Kits - ARM category](#):

Click to view products by [NXP manufacturer](#):

Other Similar products are found below :

[CY4541](#) [OM13090UL](#) [YR0K77210B000BE](#) [B-U585I-IOT02A](#) [NUCLEO-WL55JC1](#) [ZDSD-Pinboard](#) [LKS32MC034DOF6Q8-k](#)
[LKS32MC077MBS8-K](#) [LKS32MC038Y6P8B-K](#) [LKS32MC071DOC8T8-K](#) [LKS32MC074DOF8Q8-K](#) [LKS32MC071CBT8-K](#)
[LKS32MC038Y6P8-k](#) [Ai-WB2-32S-Kit](#) [GD32E103T-START](#) [GD32L233K-START](#) [XDS601](#) [RP2040-Tiny](#) [M6G2C-256LI](#) [YT37](#)
[LKS32MC033H6P8B-K](#) [VC-02-Kit_EN](#) [Ra-08H-Kit](#) [Hi-12FL-Kit](#) [PB-03M-Kit](#) [Ai-WB2-13-Kit](#) [PB-03F-Kit](#) [Ra-08-Kit](#) [Hi-07SL-Kit](#) [Hi-](#)
[07S-Kit](#) [Ai-WB2-12F-Kit](#) [PB-03-Kit](#) [Hi-12F-Kit](#) [AT-START-F407](#) [E104-BT40-TB](#) [APM32F072VBT6](#) [APM32F091VC MINI](#)
[APM32F407IG-MINIBOARD](#) [APM32F051R8 MINI](#) [GD32FPRT-START](#) [GD32407H-START-1](#) [GD32E503V-EVAL](#) [GD32E507R-START](#)
[GD32403V-START-1](#) [EPC1EVK-ECGPPG\(FS\)](#) [NS4EVKA-LC](#) [ENS1EVKD](#) [.ENS1EVKB](#) [ENS1EVKE](#) [HLK-7621-ALL-SUIT](#)