

M52233DEMO – Quick Start Guide

Box Contents



RS232 Cable

CodeWarrior CD (may be newer version)



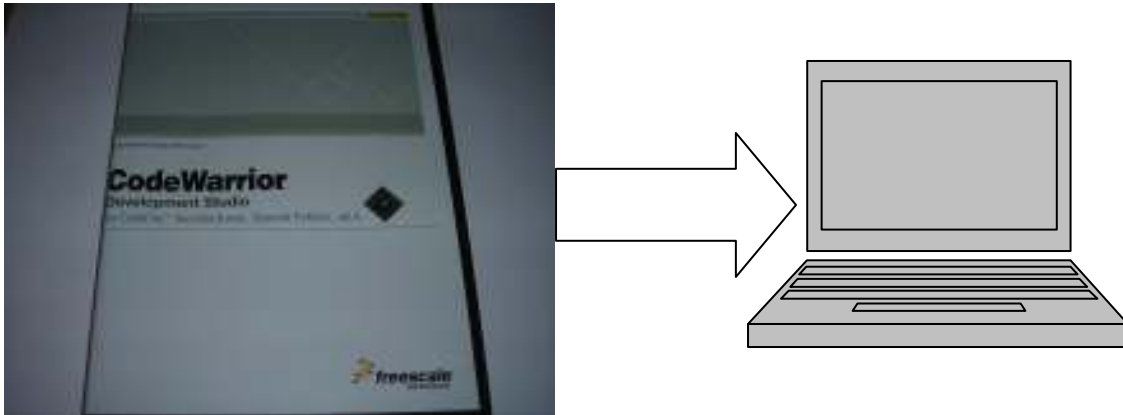
Debugger Cable

Ethernet Crossover Cable

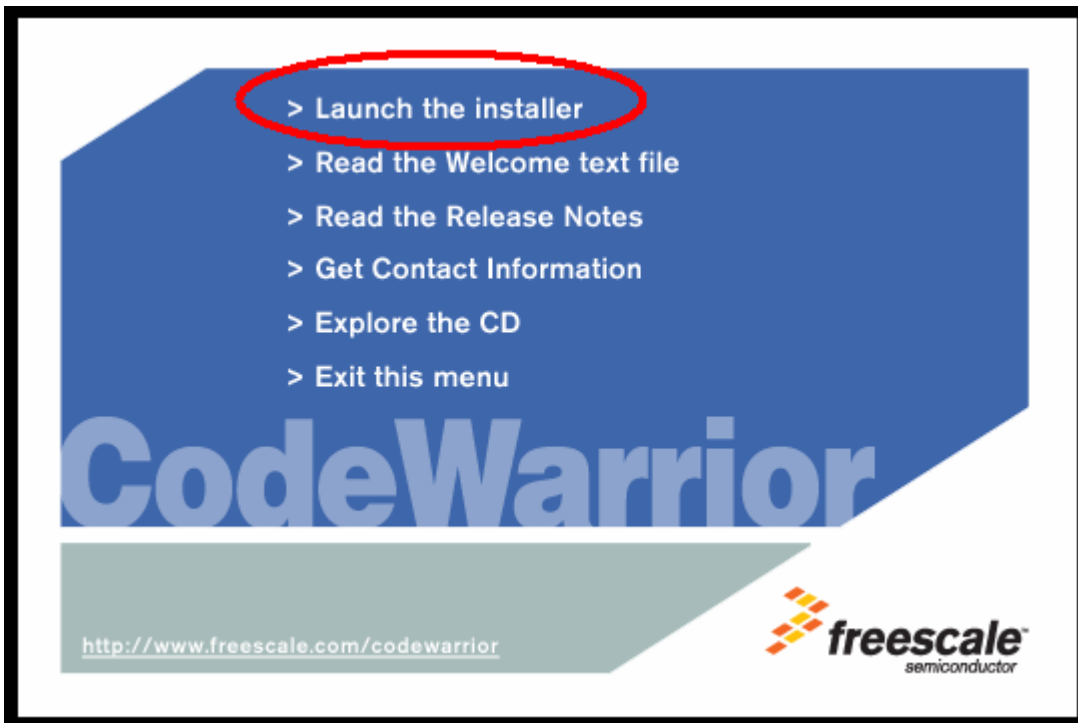


M52233DEMO board

Step 1 – Install CodeWarrior



The Setup program will automatically Start when the CD is inserted

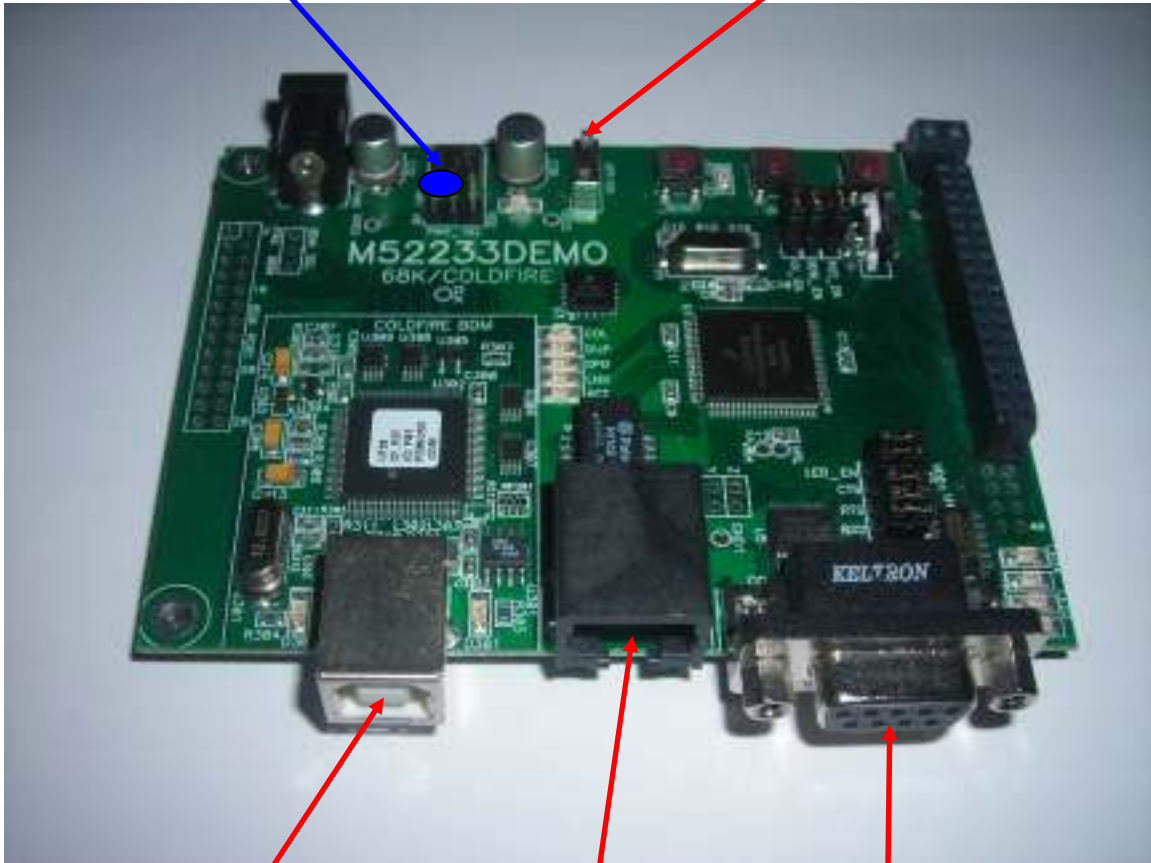


Select “Launch the Installer” then follow the directions for a typical installation

Step 2 – Verify the jumpers on the board

Be sure PWR_SEL jumper is set to VB

Be sure switch is OFF

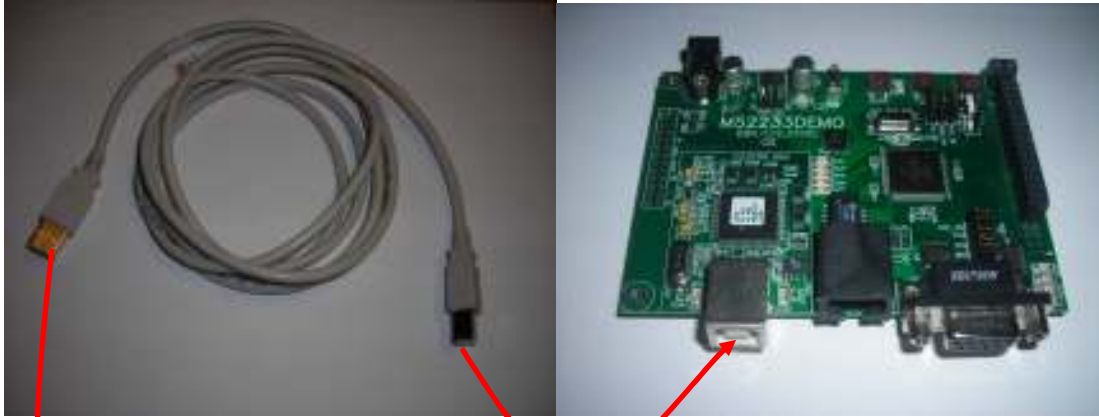


USB connector for
Debugger

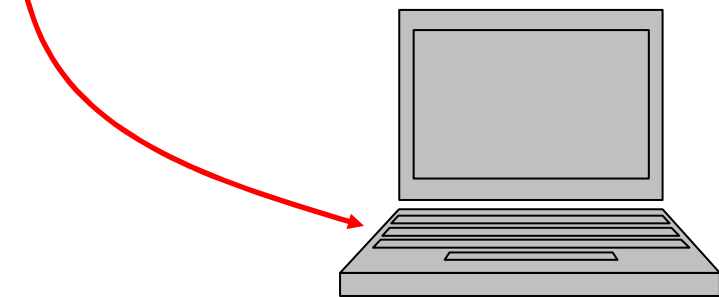
Ethernet Connector

RS232 Connector

Step 3 – Power-up the board via USB, by plugging it into your PC, with the debugger cable



Debugger Cable



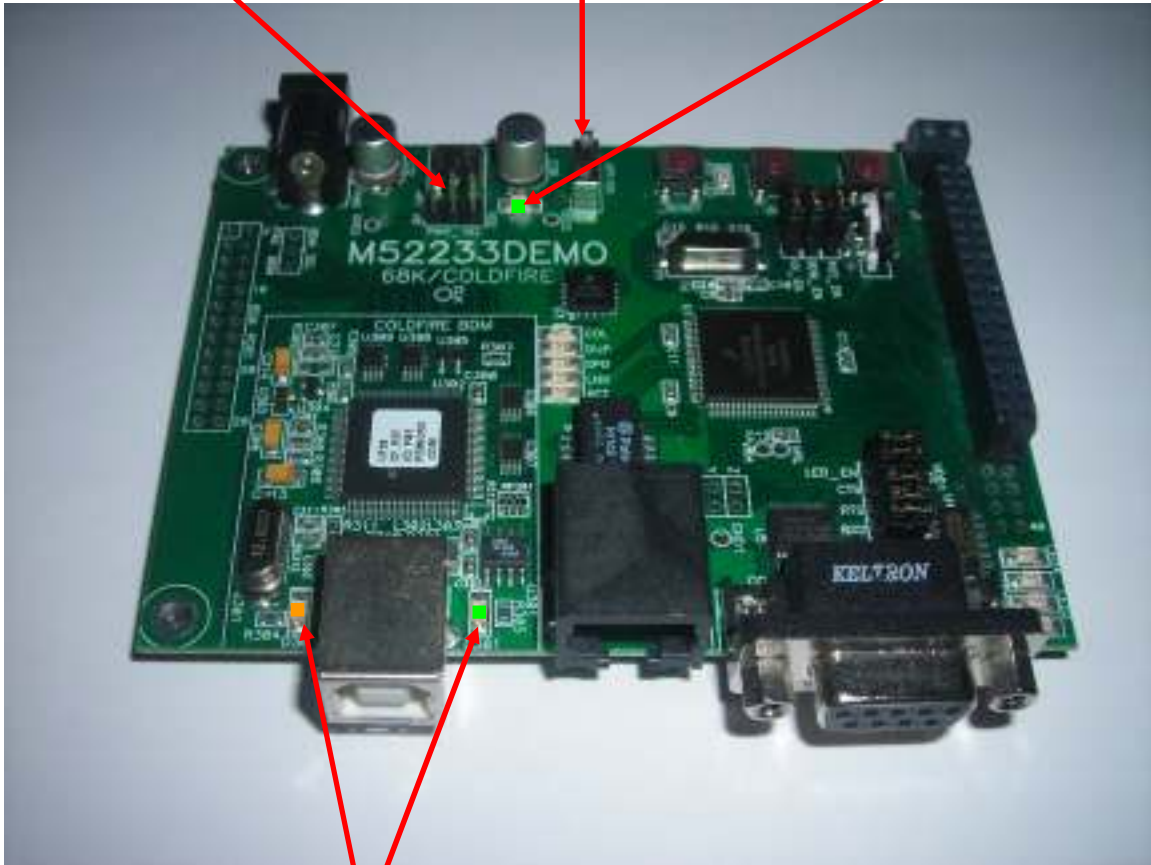
Step 4 – Turn on power switch

Note: If your starts (blinking – all the led's flashing) then turn the switch off then on again.

Verify PWR_SEL = VB

Verify Power switch is on

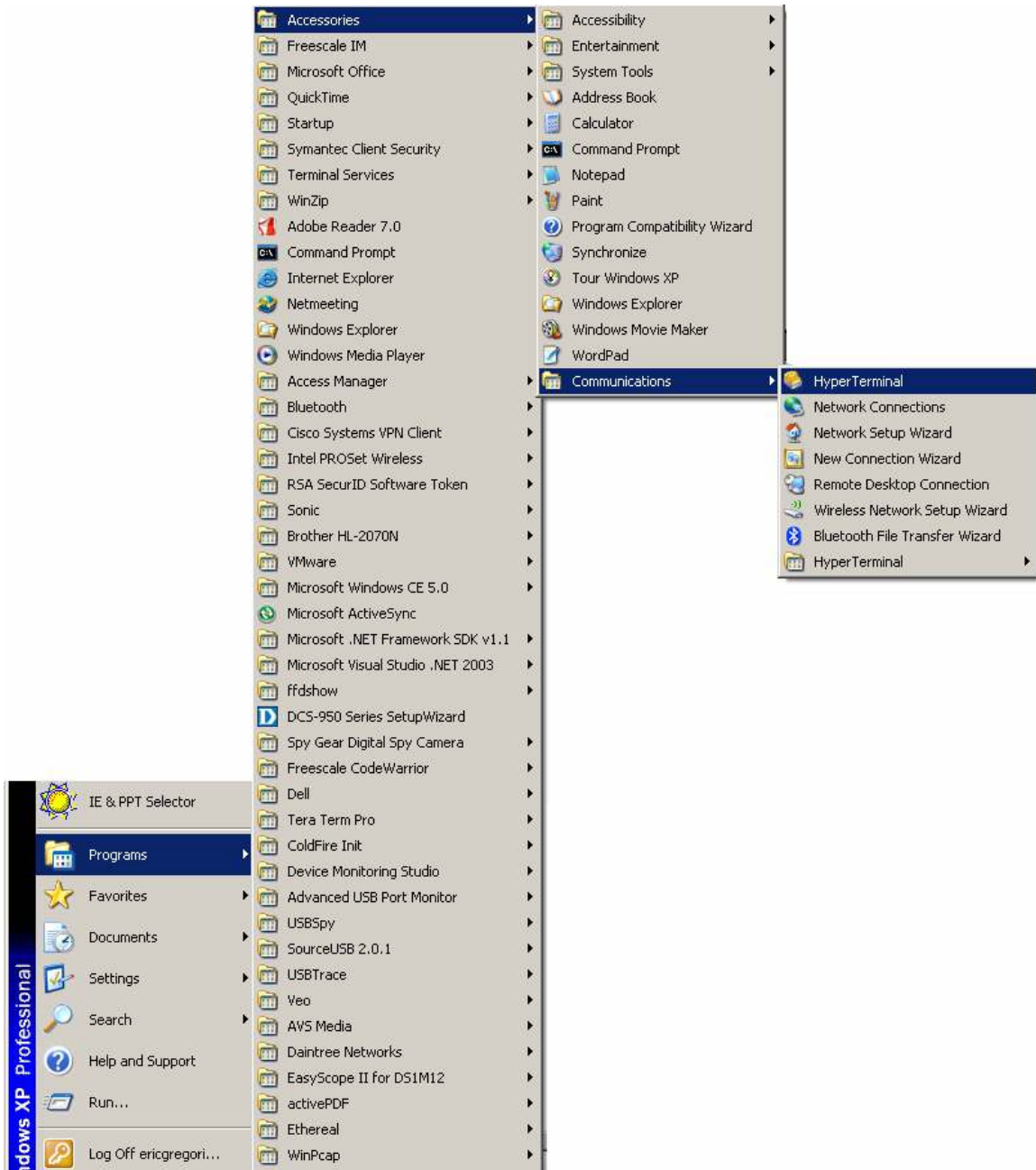
Green LED's ON, indicates everything setup OK



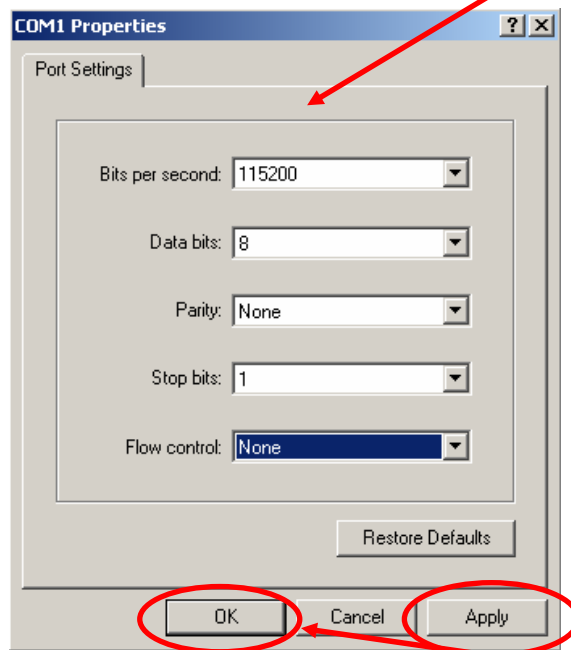
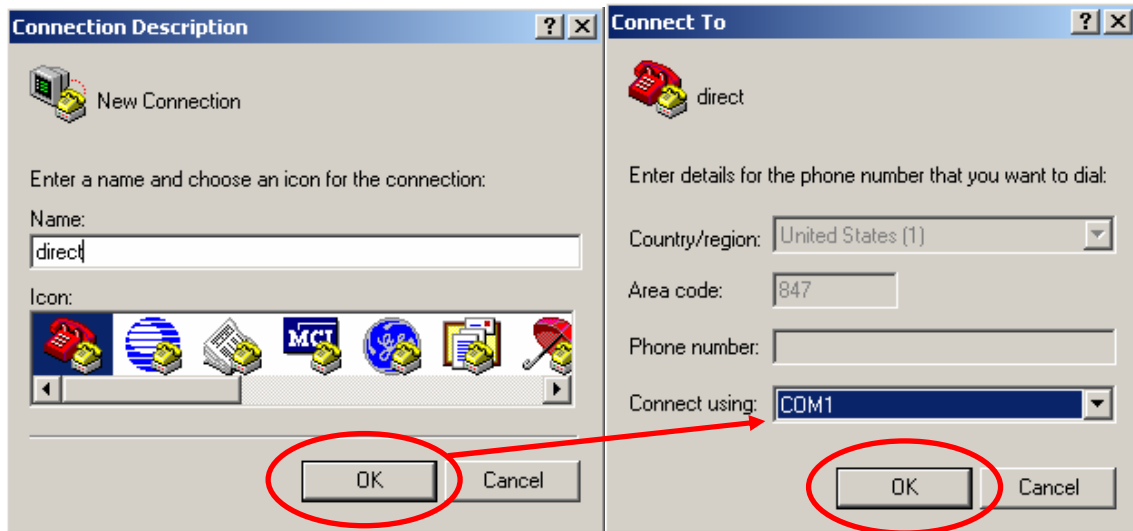
Amber and Green LED's should be on


Step 5 – Open Hyper-terminal on the PC

Start -> Programs -> Accessories -> Communications -> Hyper-terminal



Step 6 – Configure Hyper-Terminal for 115200, 8 bits, no flow control, 1 stop bit



If Hyper-Terminal shows “Auto-detect” then it did not configure correctly. Select the  icon to disconnect, then goto files -> properties in the Hyper-Terminal window, click on the configure button which will open a panel like the “COM1 Properties” above. Verify the configuration is as pictured above, then select OK. Then just hit enter in the Hyper-Terminal Window.

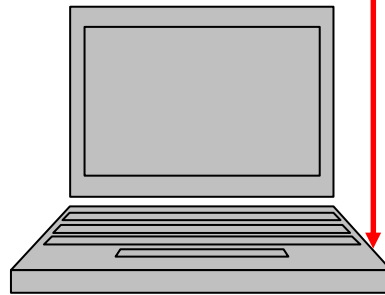


This is what the status bar under the Hyper-Terminal window should look like.

Step 7 – Connect the RS232 connector to the board.

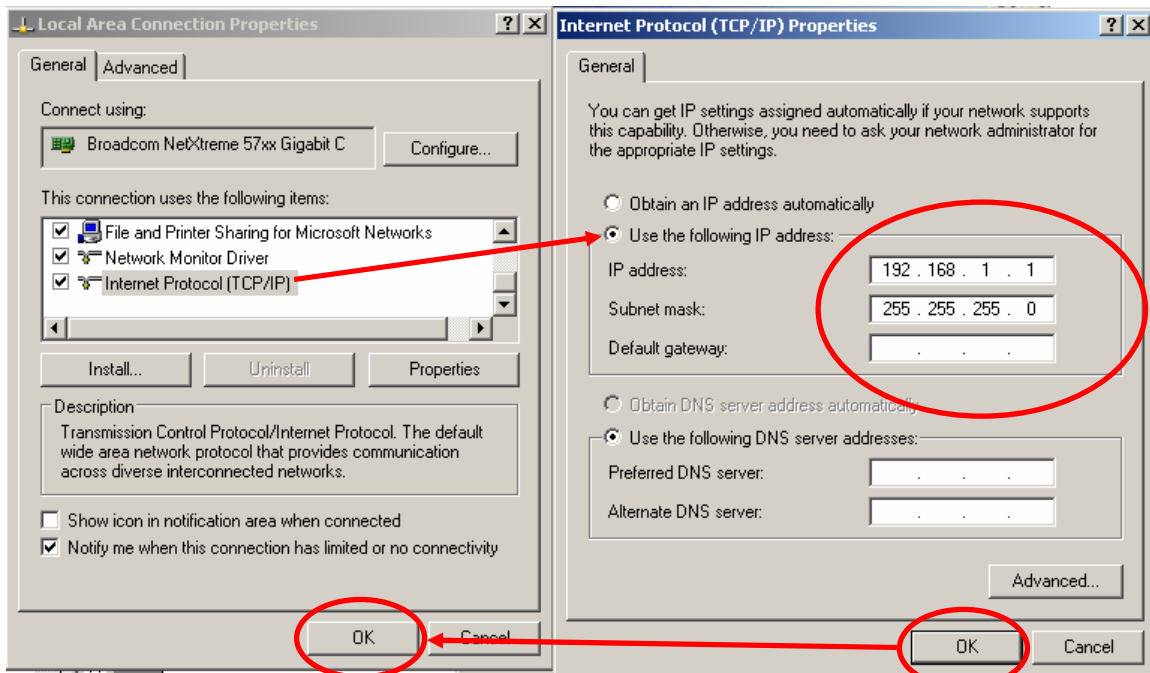
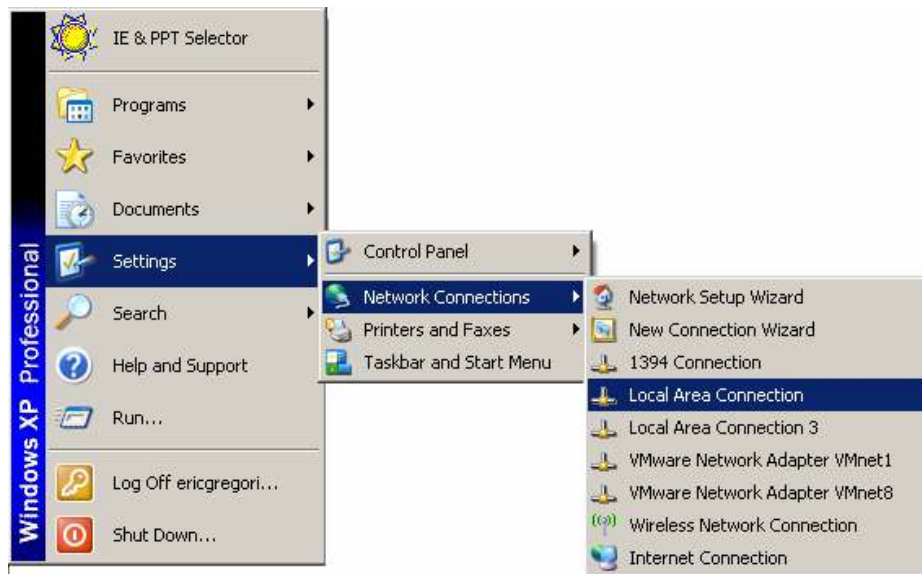


Reset board by pushing the
Reset button



Step 8 – Setting up TCP/IP on the PC

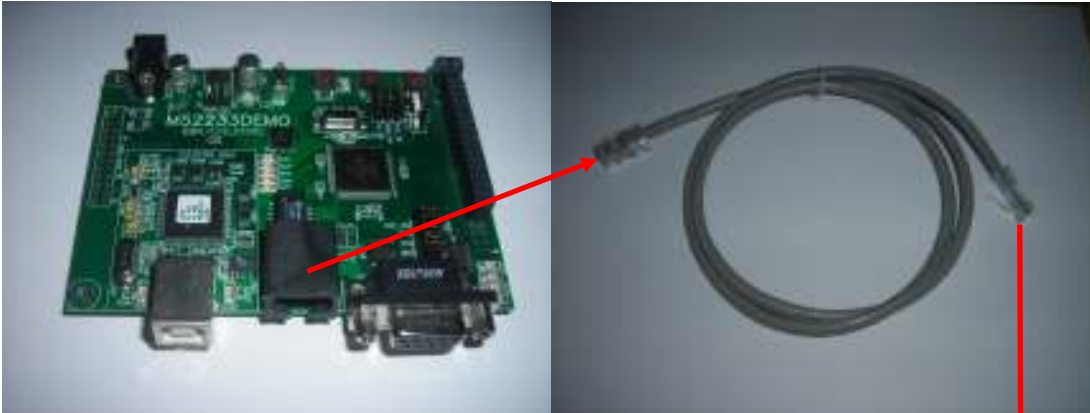
Start -> Settings -> Network Connections -> Local Area Connection



Before making the following changes, please note your original TCP/IP settings.

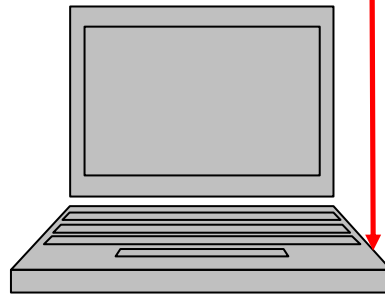
This will setup your PC for a static IP address, 192.168.1.1

Step 9 – Connect the Ethernet crossover cable to the board and PC, reset the board.

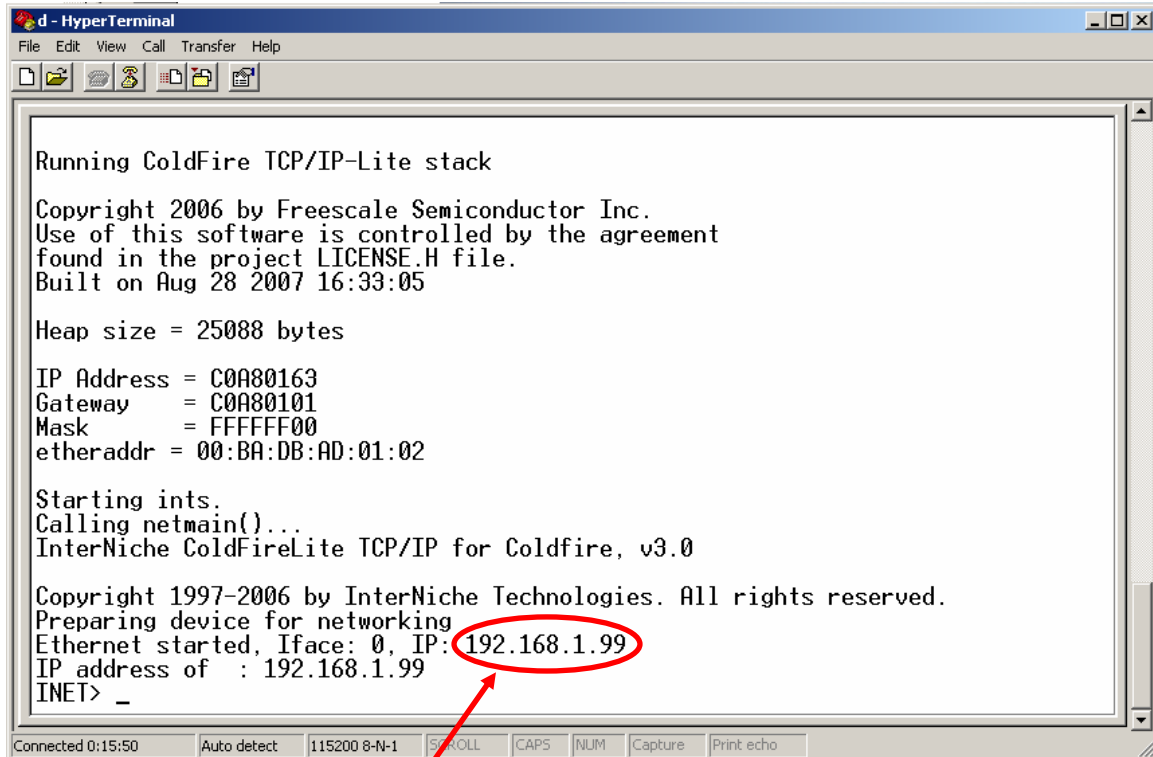


Ethernet crossover cable is required.

Reset board by pushing the
Reset button



Step 9 – Verify splash screen on Hyper-Terminal.

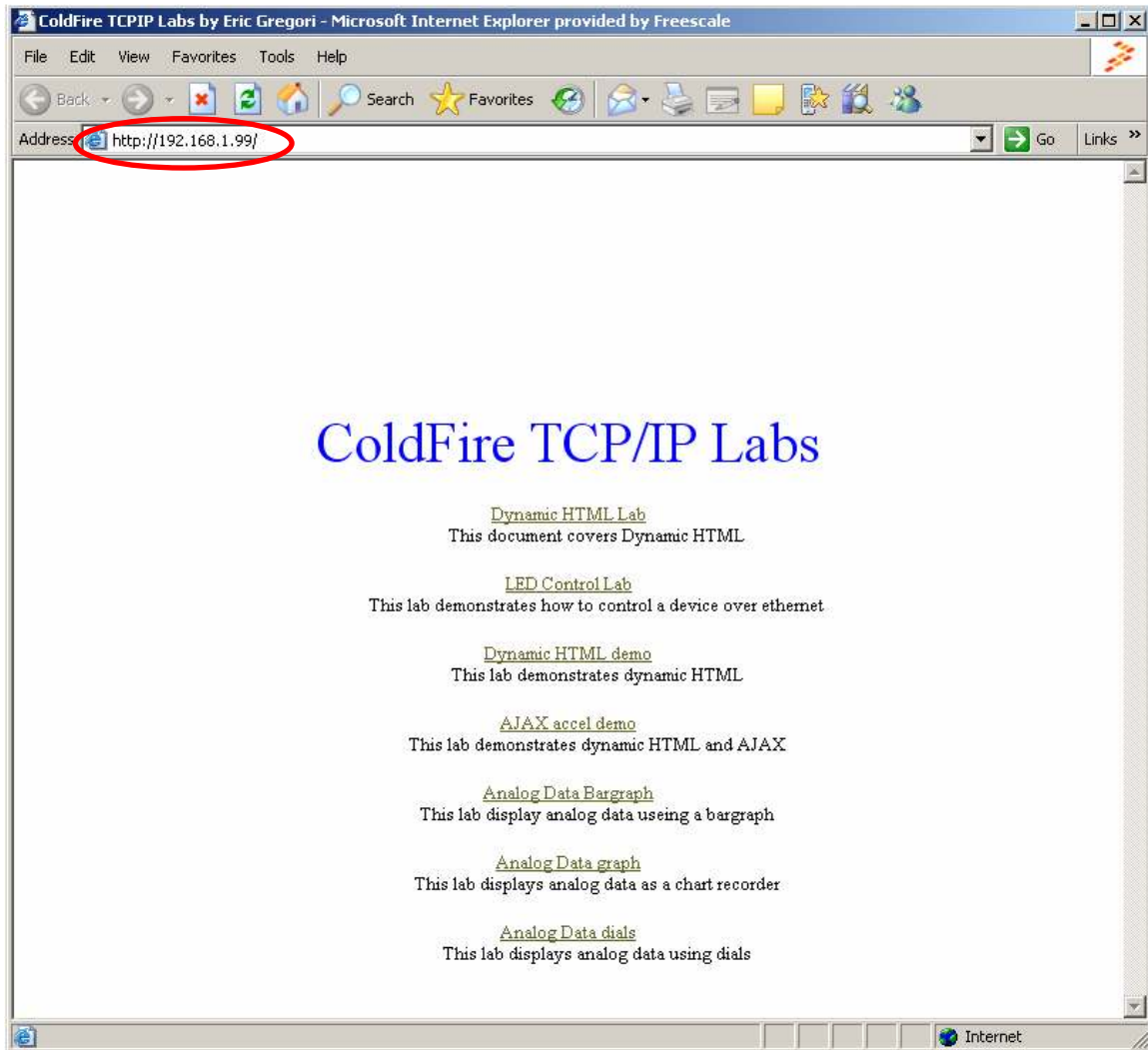


```
d - HyperTerminal
File Edit View Call Transfer Help
Running ColdFire TCP/IP-Lite stack
Copyright 2006 by Freescale Semiconductor Inc.
Use of this software is controlled by the agreement
found in the project LICENSE.H file.
Built on Aug 28 2007 16:33:05
Heap size = 25088 bytes
IP Address = C0A80163
Gateway   = C0A80101
Mask      = FFFFFFF0
etheraddr = 00:BA:DB:AD:01:02
Starting ints.
Calling netmain()...
InterNiche ColdFireLite TCP/IP for Coldfire, v3.0
Copyright 1997-2006 by InterNiche Technologies. All rights reserved.
Preparing device for networking
Ethernet started, Iface: 0, IP: 192.168.1.99
IP address of : 192.168.1.99
INET> _
Connected 0:15:50  Auto detect  115200 8-N-1  [SCROLL]  CAPS  NUM  Capture  Print echo
```

This is the IP address of the board

Step 10 – Open Internet Explorer, view IP address 192.168.1.99

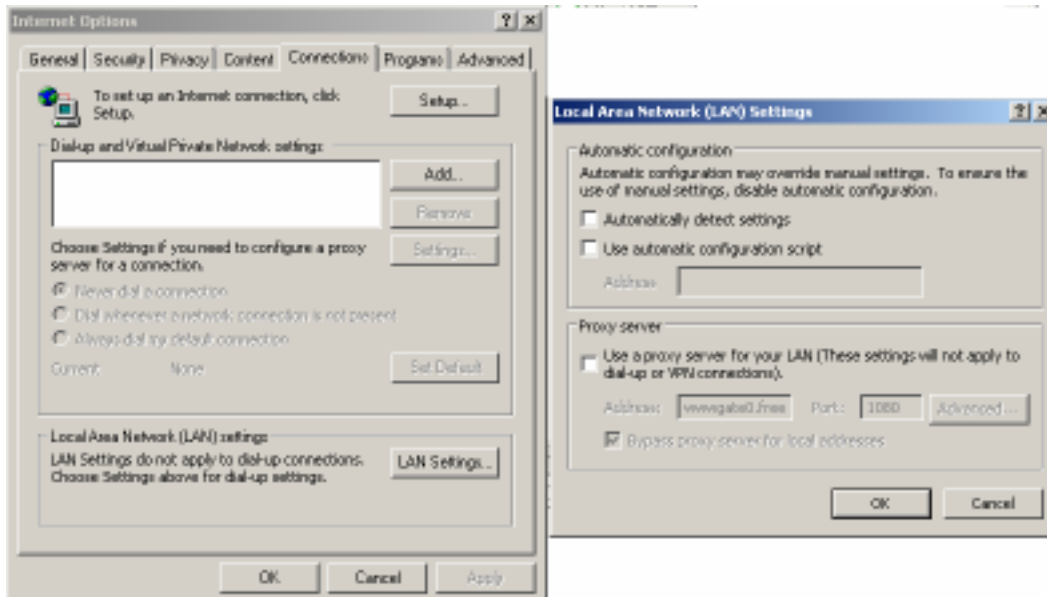
Type 192.168.1.99 in address bar:



Step 11 - Troubleshooting

(Skip this step if the web page from step 10 appears in Internet Explorer)

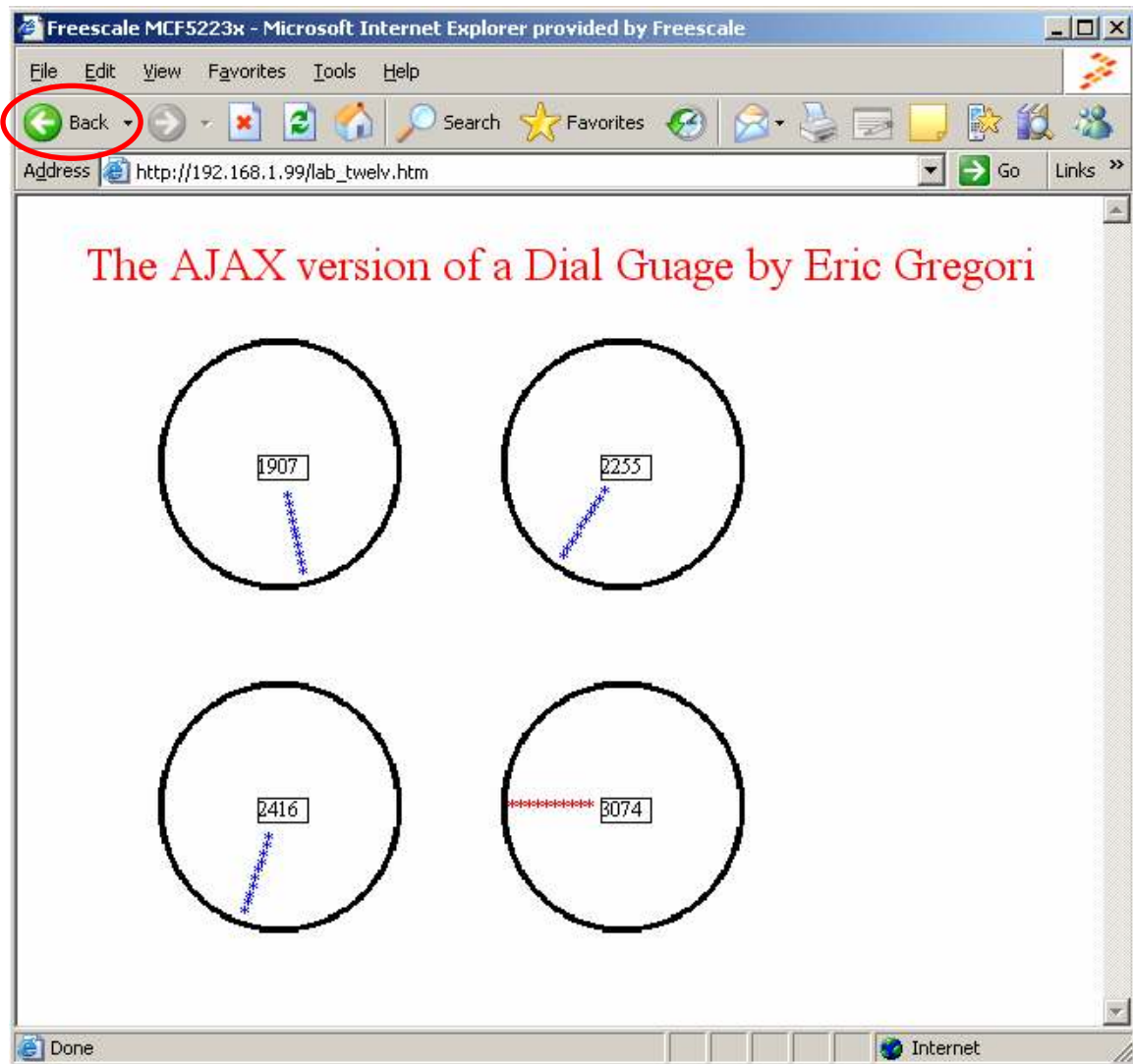
- 1) Verify board is turned on, and all cables are plugged in
- 2) Verify PC TCP/IP setting match those of step 8
- 3) Verify correct IP address entered in correct format on address line (step 10)
- 4) Verify Internet Explorer has proxy settings disabled
 - a. Tools -> Internet Connection -> Connections -> Lan Setting



Step 12 – Running a lab

To run a lab, simply click on the URL for the lab.

When done with the lab, use the back button to go back to the front page.



Analog Data Dials

On occasion, Internet Explorer may hang when jumping between AJAX labs. If this occurs, just close Internet Explorer and re-open.

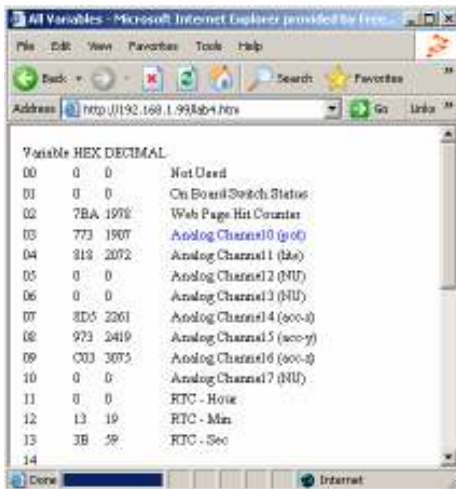
Other Labs



Explanation of Dynamic HTML



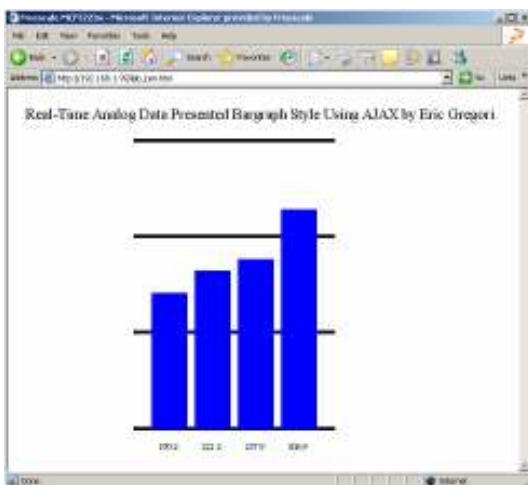
LED control Lab



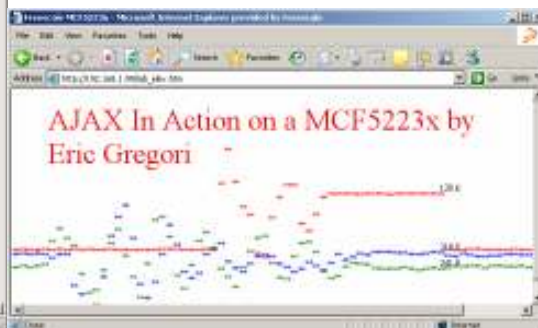
Dynamic HTML Demo



AJAX Accelerometer Demo



Bargraph Data Display in AJAX



Analog Data graph

X-ON Electronics

Largest Supplier of Electrical and Electronic Components

Click to view similar products for [Development Boards & Kits - COLDFIRE](#) category:

Click to view products by [NXP](#) manufacturer:

Other Similar products are found below :

[TWR-MCF51JE-KIT](#) [NNDK-MOD5282-KIT](#) [TWR-MCF5225X-KIT](#)