

Quick Reference

MRF101AN RF Essentials Kit

Accelerate Your RF Amplifier Design
with the Essential Components Kit



Quick Reference

GET TO KNOW THE MRF101AN KIT

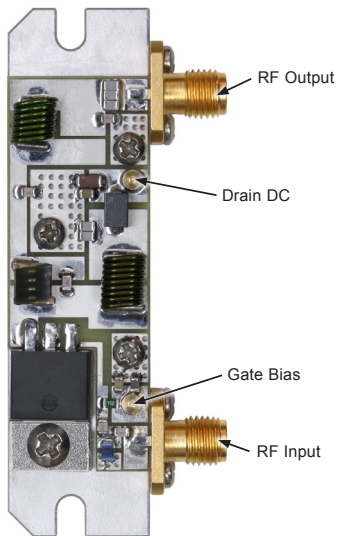


Figure 1: MRF101AN Board Connections

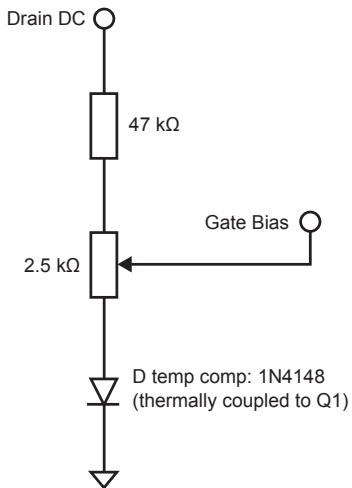


Figure 2: External Temperature Compensating Gate Bias Circuit

HOW TO GET STARTED

If the fixture is a new build:

1. Check gate bias connection using an ohmmeter: it should read open circuit.
2. Check drain DC power terminal using an ohmmeter: short gate bias to ground and drain DC power terminal should read open circuit.

Initial power on:

1. Mount baseplate onto a heatsink capable of dissipating more than 40 W.
2. Terminate RF output with a 50 ohm load capable of dissipating more than 100 W.
3. Connect RF input to a 50 ohm source with RF off.
4. Set gate bias to 0 V.
5. Apply 40 to 50 Vdc to drain DC terminal. Current should be 0 A.
6. Adjust gate bias to desired target current, typically 1-10% of full rated current (50-500 mA).
7. Slowly increment RF input power source taking care not to exceed 1 W. Monitor drain DC current and RF output power (4 A max at 100 W).
8. Check drain DC current, RF output power and temperature (4 A max at 100 W).

Shutdown:

1. Shut off RF input power.
2. Reset gate bias to 0 V.
3. Remove drain DC voltage.

Assembly notes:

- Mount all SMT devices on PCB (device values are dependent on frequency of operation).
- Make sure no solder blobs are on non-component side of board.
- Trim leads of MRF101AN to shoulder.
- Mount board onto baseplate.
- Mount device using thermal grease, solder only after tightening device mounting screw.
- Mount connectors and solder center pin.
- Connect bias network if used.

For design examples go to www.nxp.com/MRF101AN-TSP

www.nxp.com/MRF101KIT

© 2019 NXP B.V.

All other product or service names are the property of their respective owners. All rights reserved.

Document Number: MRF101ANEKITQRC Rev. 0

X-ON Electronics

Largest Supplier of Electrical and Electronic Components

Click to view similar products for [RF Development Tools](#) category:

Click to view products by [NXP](#) manufacturer:

Other Similar products are found below :

[MAAM-011117](#) [MAAP-015036-DIEEV2](#) [EV1HMC1113LP5](#) [EV1HMC6146BLC5A](#) [EV1HMC637ALP5](#) [EVAL-ADG919EBZ](#) [ADL5363-EVALZ](#) [LMV228SDEVAL](#) [SKYA21001-EVB](#) [SMP1331-085-EVB](#) [EV1HMC618ALP3](#) [EVAL01-HMC1041LC4](#) [MAAL-011111-000SMB](#)
[MAAM-009633-001SMB](#) [MASW-000936-001SMB](#) [107712-HMC369LP3](#) [107780-HMC322ALP4](#) [SP000416870](#) [EV1HMC470ALP3](#)
[EV1HMC520ALC4](#) [EV1HMC244AG16](#) [EV1HMC6789BLC5A](#) [MAX2614EVKIT#](#) [124694-HMC742ALP5](#) [SC20ASATEA-8GB-STD](#)
[MAX2837EVKIT+](#) [MAX2612EVKIT#](#) [MAX2692EVKIT#](#) [EV1HMC629ALP4E](#) [SKY12343-364LF-EVB](#) [108703-HMC452QS16G](#)
[EV1HMC863ALC4](#) [EV1HMC427ALP3E](#) [119197-HMC658LP2](#) [EV1HMC647ALP6](#) [ADL5725-EVALZ](#) [MAX2371EVKIT#](#) [106815-HMC441LM1](#) [UXN14M9PE](#) [MAX2016EVKIT](#) [EV1HMC939ALP4](#) [MAX2410EVKIT](#) [MAX2204EVKIT+](#) [EV1HMC8073LP3D](#)
[SIMSA868-DKL](#) [SIMSA868C-DKL](#) [SKY65806-636EK1](#) [SKY68020-11EK1](#) [SKY67159-396EK1](#) [SKY66181-11-EK1](#)