
MPC5744P Motor Controller Board User Manual

Devices Supported:
MPC5744P

Document Number: MPC5744PMCBUM
1.0
June 2015





Bretislav Zuczek

Freescale Semiconductor

Roznov Czech System Center

About This Book

This document describes the design of the MPC5744P Controller Board, which is targeted for rapid development of motor control applications.

To locate any published updates for this document, refer to the world-wide web at:

<http://www.freescale.com/>.

Revision History

Table i. Revision History Table

Date	Revision level	Description	Page number(s)
June 2015	1.0	Initial release	50

Documentation

The MPC5744P documentation is available at the web site, <http://www.freescale.com>, as follows:

- Reference manuals — MPC5744P modules in detail
- Data sheets — information mainly on the device's AC, DC, thermal characteristics and packages pin-out
- Product briefs — device overview
- Application notes — address specific design issues



Chapter 1 Introduction

1.1	Features	4
1.2	MPC5744P Board Architecture	5
1.3	Board Jumper Configuration	7
1.4	Board LEDs	9

Chapter 2 Interface Description

2.1	Power Supply J6	11
2.2	PCIE Interfaces J1, J200	11
2.3	CAN connector J8	14
2.4	USB Connectivity J19	14
2.5	Boot modes selection J2, J3 & J4	15
2.6	PWM monitoring Header's J5 & J24	15
2.7	ADC Inputs & Header J15 & J20	16
2.7.1	ADC signal description	16
2.7.2	Jumper J11	18
2.7.3	Analog Header's J15 & J20	18
2.8	SPI Header J23	20

Chapter 3 Design Consideration

3.1	MPC5744P Features	23
3.2	Clock source	26
3.3	Power Supplies and Voltage Reference	27
3.4	Analog Signal Sensing	28
3.5	Brake Signal	28
3.6	CAN Bus interface	29
3.7	SENT Interfaces	29

Chapter 4 Electrical Characteristics

Chapter 5 Board Set-up Guide

Appendix A References

Appendix B Abbreviations

Appendix C MPC5744P Controller Board Schematic



Chapter 1 Introduction

The MPC5744P Motor Controller Board is designed to drive up to two 3-phase BLDC / PMSM motors, enabling implementation of motor control techniques:

- Sensorless:
 - Back-EMF signal sensing using an MCU ADC module
 - Back-EMF zero-cross signal monitoring

- Sensor based:
 - Hall sensor signal monitoring
 - Encoder sensor signal monitoring

The two on-board PCI-Express interfaces enable control of the BLDC / PMSM motor power stages.

The CAN and SENT communication interfaces connect the board to the other automotive network nodes.

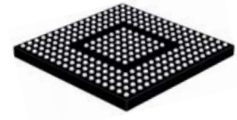
The USB interface is targeted at FreeMASTER PC-based application control.

The Controller Board is assembled with MPC5744P in 257 MAPBGA package.

1.1 Features

The MPC5744P Controller Board features are as follows:

- MPC5744P microcontroller, 257 MAPBGA package (14 x 14 mm)
- JTAG & NEXUS interface for MCU code download and debugging
- System-basis chip MC33908
- Motor control interfaces:
 - 2x PCI-Express
- Connectivity interfaces:
 - 1x CAN
 - 2x SENT + 2x SENT SPC
 - USB interface
- LEDs:
 - Power-on indicators
 - SBC safe mode indicator
 - 6x user free indicators
- Controls:
 - Reset button
- Pin headers for MCU peripheral access.
- Power plug universal 2.1/2.5mm connector.



1.2 MPC5744P Board Architecture

The MPC5744P Controller Board contains the basic building blocks are depicted in (see [Figure 1-1](#)): The block colour differentiates a block function:

- Blue - MCU and application software download, and the debug interface
- Green - Motor control related hardware
- Red - Board power supply and connectivity
- Violet - Application control

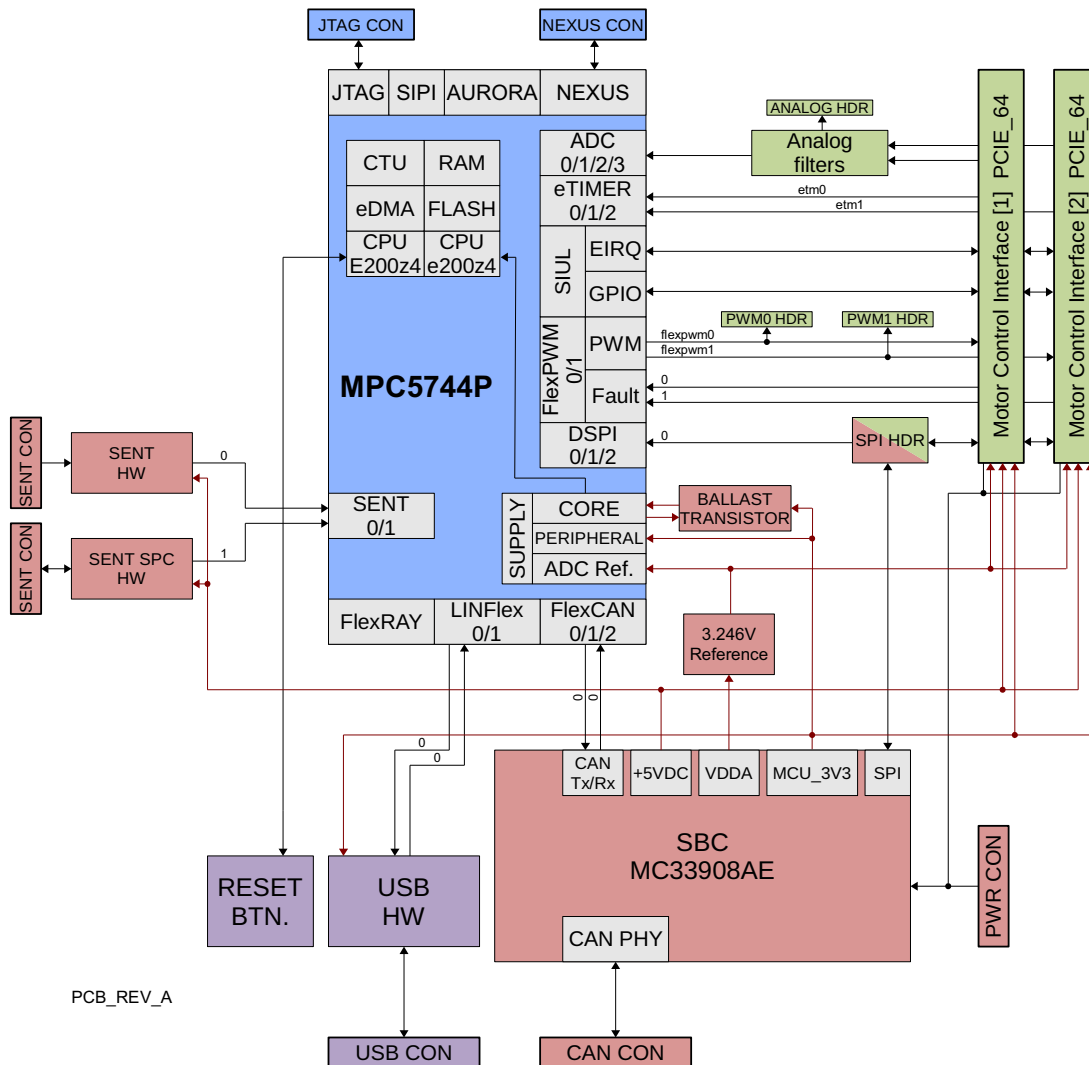


Figure 1-1. MPC5744P Controller Board Block Diagram

The board is supplied by VBAT voltage in the range of 8V to 18V. The MC33907 provides 5V to the Encoder / HALL interface. The MCU and on-board logic are supplied by MCU_3.3V. The MCU generates two independent PWM signals for each phase. The user can control the application using the I/O signals from PCI-Express interface, USB interface (RS232), CAN and SENT buses.

The JTAG, NEXUS interfaces are present on-board to enable the download and debugging of MCU code. For the on-board block location, see [Figure 1-2](#).

Block description:

1. MCU MPC5744P
2. RESET button
3. DEBUG interfaces
4. SBC MC33908AN
5. USB interface
6. Analog filters
7. SENT bus headers
8. CAN bus header
9. Power LED indicators
10. USER LEDs [1]
11. USER LEDs [2]
12. Motor control interface [1]
13. Motor control interface [2]
14. Test headers
15. Power plug

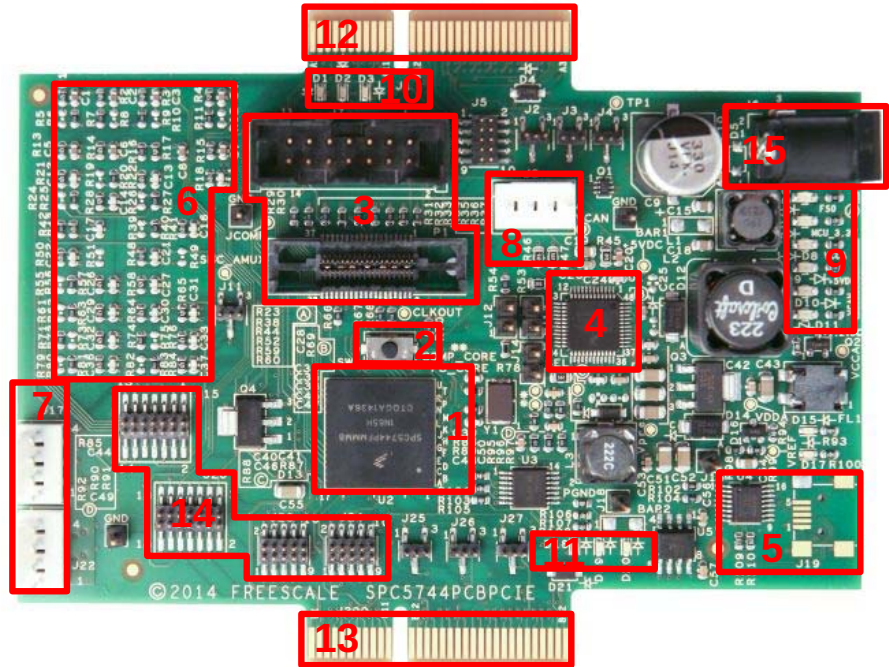


Figure 1-2. MPC5744P Controller Board - Block Location

1.3 Board Jumper Configuration

See [Table 1-1](#), [Table 1-2](#) and [Figure 1-3](#) for proper jumper configuration.

Table 1-1. MPC5744P Board Configuration

Jumper	Selector	Function	Connections
J4	BOOT selection	Boot Mode Selection: - Single chip (default) - Serial Boot Loader	1-2 closed 2-3 open
J2 J3	ABS_1 ABS_2	Alternate Boot Mode Selector 1 & 2: for detail description see	1-2 open 3-4 open
J11	AMUX	Analog signal from SBC	1-2 close
J12	SBC MODE	SBC MODE selection - DUBUG, (default) - NORMAL,	1-2 closed 1-2 open
J13	IGNITION	Emulation of the IGNITION signal for SBC	open
J14	RESET	SBC RESET signal for MCU - RESET enable, closed - RESET disable, open	closed
J25 J27	PCI-Express interface selection	Serial communication - interface selector - M1_PCI-Express - M2_PCI-Express	1-2 closed 2-3 closed
J26	SIN-WAVE signal interface selection	Sinusoidal signal - interface selector - M1_PCI-Express - M2_PCI-Express	1-2 closed 2-3 closed

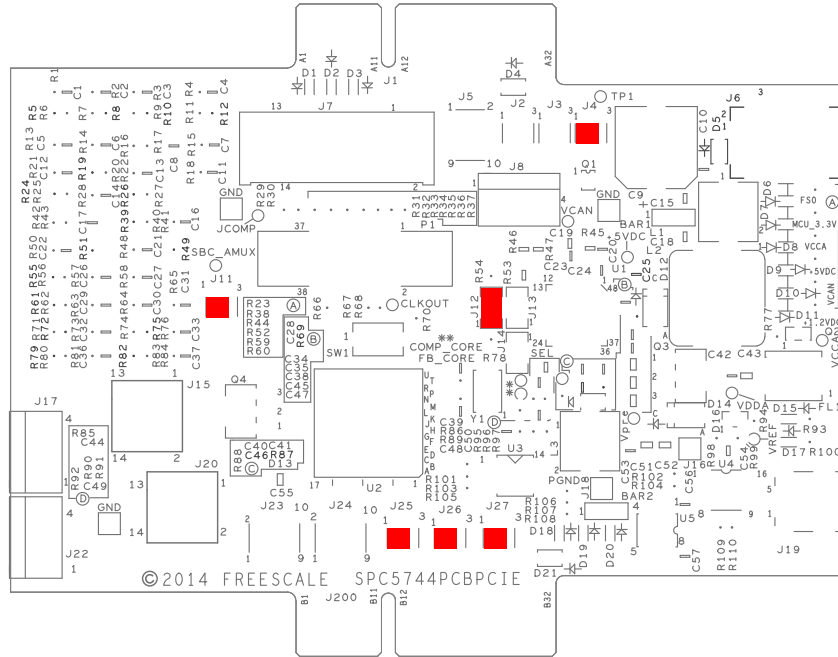


Figure 1-3. MPC5744P Controller Board Jumper Position and Default Setting

1.4 Board LEDs

The [Table 1-2](#) displays the on-board LEDs. For on-board LED locations, see [Figure 1-2](#).

Table 1-2. On-board LEDs

LED	Signal Name	Description
D1	APP_LED_1	Application LED_1
D2	APP_LED_2	Application LED_2
D3	APP_LED_3	Application LED_3
D6	/FS0	MC33908 safe pin state (ON - SBC in safe mode)
D7	MCU_3.3V	+3.3V MCU and peripheral power supply
D8	VCCA	Analog power supply
D9	+5VDC	+5V power supply
D10	VCAN	CAN driver voltage regulator
D11	+1.2VDC	+1.2V MCU core supply
D15	M1_PWM_A0	Phase A0 top switch signal (ON - High Level)
D17	M1_PWM_B0	Phase B0 bottom switch signal (ON - High Level)
D18	APP_LED_4	Application LED_4
D19	APP_LED_5	Application LED_5
D20	APP_LED_6	Application LED_6

Chapter 2 Interface Description

The following chapters summarize the on-board connectors and headers pin-outs, signal meanings and MCU pin assignments.

2.1 Power Supply J6

The MPC5744P Controller Board can be supplied either by using the univesal 2.1/2.5 mm DC power plug J6 or the PCIE connector (J1, J200, pin# B31). see [Table 1-1](#)

The controller board provides MCU_3.3V for MCU and on-board logic, 5V for the exrenal interfaces and 5V for analog peripheral supply. Supply 1.2V for MCU core is derived from MCU_3.3V. All supply voltages and its proper operation is monitored by LEDs (see [Table 1-2](#)).

The board is designed to operate in the voltage range from 8V to 18V. The board is protected against a reverse polarity supply voltage.

2.2 PCI-Express Interfaces J1, J200

The PCIE Motor controll interface defines the interface between the MPC5744P Motor Controller Board and the BLDC / PMSM motor power stage.

The list of PCI-Express signals is as follows:

- Control signals:
 - PWM phase A, B, C top and bottom switches control
 - Brake signal control
 - Power Factor Correction (PFC)
- Monitor signals
 - DC-bus voltage
 - DC-bus current
 - Phase A, B, C current
 - Zero-cross signals
 - Back-EMF phase A, B, C
 - Temperature monitoring
- Power Supply 12V
- Serial line - a bidirectional communication line between the Controller Board and Power Stage

The [Table 2-1](#) defines the PCI-Express motor control interface pin-out and pin assignment to the MCU.

Table 2-1. PCI-E MC Interface Signal Description

J1 & J200 Interface Pin	Signal Name	J1 PCIE#1 MCU Signal	J200 PCIE#2 MCU Signal	Description	Direction
A1	VDDA	-	-	Positive Analog power supply	Power out
A2	GND_A	-	-	Analog power supply ground	Analog GND
A3	I_A / BEMF_A	ADC0/1_AN11	ADC2/3_AN0	Phase A current / Phase A BEMF signal	Analog input
A4	I_B / BEMF_B	ADC0/1_AN12	ADC2/3_AN1	Phase B current / Phase B BEMF signal	Analog input
A5	I_C / BEMF_C	ADC0/1_AN13	ADC1/3_AN5	Phase C current / Phase C BEMF signal	Analog input
A6		ADC1/3_AN6	ADC0/1_AN12		Analog input
A7		ADC1_AN1	ADC1_AN1		Analog input
A8	RES_SIN	ADC0_AN0	ADC2/3_AN2	Resolver SIN	Analog input
A9	RES_COS	ADC1_AN0	ADC1/3_AN4	Resolver COS	Analog input
A10	RES_EXT_SIG	SWG_OUT	SWG_OUT	Resolver excitation analog signal	Analog output
A11	GND_A			Analog power supply ground	Analog GND
A12	+5VDC			Digital peripheral +5V power supply	Power out
A13	GND			Digital peripheral ground	Digital GND
A14	PWM0	FLEXPWM0_A0	FLEXPWM1_A0	Phase A top switch control (H -> Turn OFF)	Digital output
A15	PWM1	FLEXPWM0_B0	FLEXPWM1_B0	Phase A bottom switch control (H -> Turn ON)	Digital output
A16	PWM2	FLEXPWM0_A1	FLEXPWM1_A1	Phase B top switch control (H -> Turn OFF)	Digital output
A17	PWM3	FLEXPWM0_B1	FLEXPWM1_B1	Phase B bottom switch control (H -> Turn ON)	Digital output
A18	PWM4	FLEXPWM0_A2	FLEXPWM1_A2	Phase C top switch control (H -> Turn OFF)	Digital output
A19	PWM5	FLEXPWM0_B2	FLEXPWM1_B2	Phase C bottom switch control (H -> Turn ON)	Digital output
A20	Mx_PWM_A3	FLEXPWM0_A3	FLEXPWM1_A3		Digital output
A21	Mx_PWM_B3	SIUL_GPIO[103]	SIUL_GPIO[107]	DC Link brake signal	Digital output
A22	Mx_PWM_X0	FLEXPWM0_X0	FLEXPWM1_X0	Phase A auxiliary PWM / Phase A zero-cross signal	Dig. bidirectional
A23	Mx_PWM_X1	FLEXPWM0_X1	FLEXPWM1_X1	Phase B auxiliary PWM / Phase B zero-cross signal	Dig. bidirectional
A24	Mx_PWM_X2	FLEXPWM0_X2	FLEXPWM1_X2	Phase C auxiliary PWM / Phase C zero-cross signal	Dig. bidirectional
A25	Mx_PWM_X3	FLEXPWM0_X3	FLEXPWM1_X3		Dig. bidirectional
A26	Mx_FLT0	FLEXPWM0_FAULT0	FLEXPWM1_FAULT0	Over-current fault signal	Digital input
A27	Mx_FLT1	FLEXPWM0_FAULT1	FLEXPWM1_FAULT1	Over-voltage fault signal	Digital input
A28	Mx_FLT2	FLEXPWM0_FAULT2	FLEXPWM1_FAULT2		
A29	Mx_FLT3	FLEXPWM0_FAULT3	FLEXPWM1_FAULT3		
A30	Mx_IO_6	SIUL_GPIO[133]	SIUL_GPIO[134]		
A31	Mx_SW_UP	SIUL_GPIO[148]	SIUL_GPIO[77]	Application push button UP	Digital input

J1 & J200 Interface Pin	Signal Name	J1 PCIE#1 MCU Signal	J200 PCIE#2 MCU Signal	Description	Direction
A32	Mx_SW_DOWN	SIUL_GPIO[92]	SIUL_GPIO[42]	Application push button DOWN	Digital input
B1	VREF	-	-	Positive analog reference voltage	Power out
B2	GND_A	-	-	Analog power supply ground	Analog GND
B3	DCBI	ADC0_AN1	ADC1/3_AN7	DC Link current signal	Analog input
B4	DCBV	ADC0/1_AN14	ADC1/3_AN6	DC Link voltage	Analog input
B5	-	ADC0_AN2	ADC0_AN2	-	
B6	-	ADC0_AN3	ADC0_AN3	-	
B7	-	ADC0_AN4	ADC0_AN4	-	
B8	-	ADC0_AN6	ADC0_AN6	-	
B9	-	ADC0_AN7	ADC0_AN7	-	
B10	TEMP	ADC0_AN8	ADC1/3_AN8	Temperature of the power stage	
B11	GND_A	-	-	Analog power supply ground	Analog GND
B12	+3.3VDC			+3.3V MCU power supply	Power out
B13	GND			Digital peripheral ground	Digital GND
B14	ENCx_PHA	ETIMER0_ETC0	ETIMER1_ETC0	Encoder A / HALL phase A / Phase A zero-cross signal	Digital input
B15	ENCx_PHB	ETIMER0_ETC1	ETIMER1_ETC1	Encoder B / HALL phase B / Phase B zero-cross signal	Digital input
B16	ENCx_INDEX	ETIMER0_ETC2	ETIMER1_ETC2	Encoder C / HALL phase C / Phase C zero-cross signal	Digital input
B17	-	ETIMER0_ETC3	ETIMER1_ETC3		
B18	-	ETIMER0_ETC4	ETIMER1_ETC4		
B19	RES REF	ETIMER0_ETC5	ETIMER1_ETC5	Resolver excitation digital signal	Digital output
B20	Mx_SW_RUN	SIUL_GPIO[12]	SIUL_GPIO[15]	Application switch RUN / STOP	Digital input
B21	33937 SOUT	DSPI[0]_SIN	DSPI[0]_SIN	SPI input data	Digital input
B22	33937_SIN	DSPI[0]_SOUT	DSPI[0]_SOUT	SPI output data	Digital output
B23	33937 SCK	DSPI[0]_SCK	DSPI[0]_SCK	SPI clock	Digital output
B24	33937 CS	DSPI[0]_CS1	DSPI[0]_CS2	SPI Chip-select	Digital output
B25	-	-	-	-	
B26	USB TxD	LIN[1]_RxD	LIN[1]_RxD	Isolated USB periph. TxD	Digital input
B27	USB RxD	LIN[1]_TxD	LIN[1]_TxD	Isolated USB periph. RxD	Digital output
B28	33937 EN	SIUL_GPIO[11]	SIUL_GPIO[132]	Device enable signal	Digital output
B29	33937 RST	SIUL_GPIO[10]	SIUL_GPIO[49]	Device RESET signal	Digital output
B30	33937 INT	REQ[12]	REQ[13]	Device Interrupt signal	Digital input

Interface Description

J1 & J200 Interface Pin	Signal Name	J1 PCIE#1 MCU Signal	J200 PCIE#2 MCU Signal	Description	Direction
B31	+12V POWER	-	-	Controller board power supply	Power in
B32	GND_POWER			Contrller board power ground	Power GND

2.3 CAN connector J8

The system basis chip MC33908 provide CAN physical layer transceiver which is used as the CAN hardware interface. A [Table 2-2](#) show the CAN connector pin-out and pin assignment to the MCU.

Table 2-2. CAN J8 Signal Description

Interface Pin	Signal Name	MCU Signal	Description	Direction
1	CANH	CAN[0]RX CAN[0]TX	CAN bus H	Diff. bidirectional
2	CANL	CAN[0]RX CAN[0]TX	CAN bus L	Diff. bidirectional
3	+5VDC	-	Supply voltage	-
4	GND	-	Ground	-

2.4 USB Connectivity J19

The USB line is used for board communication with the PC, when using e.g. the Freescale FreeMASTER tool [3] to control the user application. The interface uses a 5 pin mini USB B-type connector and it is isolated from the board environment. See [Table 2-3](#) for the pin description and pin assignment to the MCU.

Table 2-3. J206 USB Signal Description

Interface Pin	Signal Name	MCU Signal	Description	Direction
1	VBUS	-	USB Power Supply	-
2	D-	LINFlex[0]RX LINFlex[0]TX	Data -	Dig. bidirectional
3	D+	LINFlex[0]RX LINFlex[0]TX	Data +	Dig. bidirectional
4	ID		Not connected	
5	GND_USB	-	USB Ground	-

2.5 Boot modes selection J2, J3 & J4

The MPC5744P supports the following boot modes:

- Single Chip (SC) mode—the microcontroller boots from the first bootable section of the flash memory main array.
- Serial Boot Loader (SBL) mode—the microcontroller downloads boot code from either the LINFlexD or FlexCAN interface and then executes it. Serial boot can be performed with or without autobaud.

Details see in [Table 2-4](#).

Table 2-4. J4, J3 & J2 Hardware configuration

FAB [J24]	ABS2 [J3]	ABS1 [J2]	Description
1-2 closed	-	-	Boot from internal Flash
1-2 open	1-2 closed	1-2 closed	Serial boot from LINFlexD
1-2 open	1-2 closed	2-3 closed	Serial boot from FlexCAN

2.6 PWM monitoring Header's J5 & J24

Monitoring the PWM signal is possible using J5 resp. J24. The [Table 2-5](#) , [Table 2-6](#) summarizes the header pin-out.

Table 2-5. J5 Motor 1 PWM Header Signal Description

Interface Pin	Signal Name	MCU Signal	Description	Direction
1	M1_PWM_A0	FlexPWM0_A[0]	Phase A top switch control	Digital output
2	M1_PWM_B0	FlexPWM0_B[0]	Phase A bottom switch control	Digital output
3	M1_PWM_A1	FlexPWM0_A[1]	Phase B top switch control	Digital output
4	M1_PWM_B1	FlexPWM0_B[1]	Phase B bottom switch control	Digital output
5	M1_PWM_A2	FlexPWM0_A[2]	Phase C top switch control	Digital output
6	M1_PWM_B2	FlexPWM0_B[2]	Phase C bottom switch control	Digital output
7	M1_PWM_A3	FlexPWM0_A[3]	Phase D top switch control	Digital output
8	M1_PWM_B3	FlexPWM0_B[3]	Phase D bottom switch control	Digital output
9	CLKOUT			
10	GPIO_15			

Table 2-6. J24 Motor 2 PWM Header Signal Description

Interface Pin	Signal Name	MCU Signal	Description	Direction
1	M2_PWM_A0	FlexPWM1_A[0]	Phase A top switch control	Digital output
2	M2_PWM_B0	FlexPWM1_B[0]	Phase A bottom switch control	Digital output
3	M2_PWM_A1	FlexPWM1_A[1]	Phase B top switch control	Digital output
4	M2_PWM_B1	FlexPWM1_B[1]	Phase B bottom switch control	Digital output
5	M2_PWM_A2	FlexPWM1_A[2]	Phase C top switch control	Digital output
6	M2_PWM_B2	FlexPWM1_B[2]	Phase C bottom switch control	Digital output
7	M2_PWM_A3	FlexPWM1_A[3]	Phase D top switch control	Digital output
8	M2_PWM_B3	FlexPWM1_B[3]	Phase D bottom switch control	Digital output
9				
10				

2.7 ADC Inputs & Header J15 & J20

The MPC5744P device has four ADC instances: ADC_0, ADC_1, ADC_2, and ADC_3. All ADC modules are with 12-bit resolution with 0 ÷ Vref common mode conversion range (see [Chapter 3.3, “Power Supplies and Voltage Reference”](#)). ADC modules are supplied from the voltage reference.

The MPC5744P (257 MAPBGA) ADC modules provide the following external inputs:

- Internally multiplexed channels 25 channels
 - 9 channels on ADC_0
 - 4 channels on ADC_1
 - 4 channels shared between ADC_0 and ADC_1
 - 5 channels shared between ADC_1 and ADC_3
 - 3 channels shared between ADC_2 and ADC_3

2.7.1 ADC signal description

Table 2-7. ADC0 Signal Description

Interface	Signal Name	Channels	Description	Direction
MOTOR1	AN0_0	ADC0_AN0	POS_SIN_RESOLVER_1	Analog input
MOTOR1	AN0_1	ADC0_AN1	PCIE#1_DCBI	Analog input
MOTOR1	AN0_2	ADC0_AN2	PCIE#1_Vsup_meas	Analog input
MOTOR1	AN0_3	ADC0_AN3	M1_RES_GEN_POS_TST	Analog input
Free for use	AN0_4	ADC0_AN4	ANALOG HEADER #1 [J15] PIN_9	Analog input

Table 2-7. ADC0 Signal Description

Interface	Signal Name	Channels	Description	Direction
AMUX	AN0_5	ADC0_AN5	SBC analog parameters meas. or free analog input	Analog input
Free for use	AN0_6	ADC0_AN6	ANALOG HEADER #1 [J15] PIN_13	Analog input
Free for use	AN0_7	ADC0_AN7	ANALOG HEADER #1 [J15] PIN_2	Analog input
MOTOR1	AN0_8	ADC0_AN8	PCIE#1_TEMP	Analog input

Table 2-8. ADC1 & ADC0/ADC1 Signal Description

Interface	Signal Name	Channels	Description	Direction
MOTOR1	AN1_0	ADC1_AN0	POS_COS_RESOLVER_1	Analog input
Free for use	AN1_1	ADC1_AN1	ANALOG HEADER #2 [J211] PIN_3	Analog input
MOTOR2	AN1_2	ADC1_AN2	PCIE#2_Vsup_meas	Analog input
MOTOR1	AN1_3	ADC1_AN3	M1_RES_GEN_NEG_TST	Analog input
MOTOR1	AN01_11	ADC01_AN11	PCIE#1 BEMFA voltage / PHASE_A current	Analog input
MOTOR1	AN01_12	ADC01_AN12	PCIE#1 BEMFB voltage / PHASE_B current	Analog input
MOTOR1	AN01_13	ADC01_AN13	PCIE#1 BEMFC voltage / PHASE_C current	Analog input
MOTOR1	AN01_14	ADC01_AN14	PCIE#_1_DCBV	Analog input

Table 2-9. ADC1/ADC3 Signal Description

Interface	Signal Name	Channels	Description	Direction
MOTOR_2	AN13_4	ADC13_AN4	POS_COS_RESOLVER_2	Analog input
MOTOR_2	AN13_5	ADC13_AN5	PCIE#2 BEMFC voltage / PHASE_C current	Analog input
MOTOR_2	AN13_6	ADC13_AN6	PCIE#2_DCBV	Analog input
MOTOR_2	AN13_7	ADC13_AN7	PCIE#2_DCBI	Analog input
MOTOR_2	AN13_8	ADC13_AN8	PCIE#2_TEMP	Analog input

Table 2-10. ADC2/ADC3 Signal Description

Motor Interface	Signal Name	MCU Signal	Description	Direction
MOTOR_2	AN23_0	ADC23_AN0	PCIE#2 BEMFA voltage / PHASE_A current	Analog input

Motor Interface	Signal Name	MCU Signal	Description	Direction
MOTOR_2	AN23_1	ADC23_AN1	PCIE#2 BEMFB voltage / PHASE_B current	Analog input
MOTOR_2	AN23_2	ADC23_AN2	POS_SIN_RESOLVER_2	Analog input

2.7.2 Jumper J11

Header J11 is primarily dedicated to connect the external analog signal from MC33908 to ADC for measurement the internal analog parameters of the MC33908. The output parameters of the MC33908 are selectable thru the SPI. In any case Pin[1] of the J11 could be used as independent analog input. See a detailed description in [Table 2-11](#).

Table 2-11. J204 Signal Description

Interface Pin	Signal Name	MCU Signal	Description	Direction
1	AN0_5	ADC0_AN5	ADC0_AN5 Analog input with filter	
2	AMUX	-	Analog output from SBC MC33908	
3	TP5			

Note: For MC33908 analog parameters measurement the J11 pins 1 & 2 must be shorted.

2.7.3 Analog Header's J15 & J20

Either of analog headers J15 & J20 could be used for connection of the external analog signals to the MCU or could be used as testpoint for measurement of the analog values from PCIE#1 and PCIE#2.

Detail description see in [Table 2-12](#) & [Table 2-13](#).

Table 2-12. Analog Header J15 Description

Interface Pin	Signal Name	MCU Signal	Description	Direction
1	HDR_AN0_0	ADC0_AN0	Analog digital converter module 0 channel 0	Analog input
2	HDR_AN0_7	ADC0_AN7	Analog digital converter module 0 channel 7	Analog input
3	HDR_AN0_1	ADC0_AN1	Analog digital converter module 0 channel 1	Analog input
4	HDR_AN0_8	ADC0_AN8	Analog digital converter module 0 channel 8	Analog input
5	HDR_AN0_2	ADC0_AN2	Analog digital converter module 0 channel 2	Analog input
6	HDR_AN01_11	ADC0/1_AN11	Analog digital converter module 0/1 channel 11	Analog input
7	HDR_AN0_3	ADC0_AN3	Analog digital converter module 0 channel 3	Analog input

Table 2-12. Analog Header J15 Description

Interface Pin	Signal Name	MCU Signal	Description	Direction
8	HDR_AN01_12	ADC0/1_AN12	Analog digital converter module 0/1 channel 12	Analog input
9	HDR_AN0_4	ADC0_AN4	Analog digital converter module 0 channel 4	Analog input
10	HDR_AN01_13	ADC0/1_AN13	Analog digital converter module 0/1 channel 13	Analog input
11	HDR_AN0_5	ADC0_AN5	Analog digital converter module 0 channel 5	Analog input
12	HDR_AN01_14	ADC0/1_AN14	Analog digital converter module 0/1 channel 14	Analog input
13	HDR_AN0_6	ADC0_AN6	Analog digital converter module 0 channel 6	Analog input
14	GND	-	Ground	-

Table 2-13. Analog Header J20 Description

Interface Pin	Signal Name	MCU Signal	Description	Direction
1	HDR_AN1_0	ADC1_AN0	Analog digital converter module 1 channel 0	Analog input
2	HDR_AN13_7	ADC1/3_AN7	Analog digital converter module 1/3 channel 7	Analog input
3	HDR_AN1_1	ADC1_AN1	Analog digital converter module 1 channel 1	Analog input
4	HDR_AN13_8	ADC1/3_AN8	Analog digital converter module 1/3 channel 8	Analog input
5	HDR_AN1_2	ADC1_AN2	Analog digital converter module 1 channel 2	Analog input
6	HDR_AN23_0	ADC2/3_AN0	Analog digital converter module 2/3 channel 0	Analog input
7	HDR_AN1_3	ADC1_AN3	Analog digital converter module 1 channel 3	Analog input
8	HDR_AN23_1	ADC2/3_AN1	Analog digital converter module 2/3 channel 1	Analog input
9	HDR_AN13_4	ADC1/3_AN4	Analog digital converter module 1/3 channel 4	Analog input
10	HDR_AN23_2	ADC2/3_AN2	Analog digital converter module 2/3 channel 2	Analog input
11	HDR_AN13_5	ADC1/3_AN5	Analog digital converter module 1/3 channel 5	Analog input
12	-	-	-	-
13	HDR_AN13_6	ADC1/3_AN6	Analog digital converter module 1/3 channel 6	Analog input
14	GND	-	Ground	-

2.8 SPI Header J23

SPI header J23 allows connect others SPI devices such as sensors, external EEPROM etc. or could be used as GPIO pin header. See [Table 2-14](#).

Table 2-14. SPI Header J23 Signal Description

Interface Pin	Signal Name	MCU Signal	Description	Direction
1	HDR_DSPI3_CS0	DSPI[3]_CS0	Serial Peripheral Interface Chip Select 0	Digital output
2	HDR_DSPI3_SIN	DSPI[3]_SIN	Serial Peripheral Interface Input	Digital input
3	HDR_DSPI3_CS1	DSPI[3]_CS1	Serial Peripheral Interface Chip Select 1	Digital output
4	HDR_DSPI3_SCK	DSPI[3]_SCK	Serial Peripheral Interface Clock	Digital output
5	HDR_DSPI3_CS2	DSPI[3]_CS2	Serial Peripheral Interface Chip Select 2	Digital output
6	HDR_DSPI3_SOUT	DSPI[3]_SOUT	Serial Peripheral Interface Output	Digital output
7	HDR_DSPI3_CS3	DSPI[3]_CS3	Serial Peripheral Interface Chip Select 3	Digital output
8	HDR_ET2_CH2/4	ETIMER2_ETC_2/4		

Table 2-14. SPI Header J23 Signal Description

Interface Pin	Signal Name	MCU Signal	Description	Direction
9	HDR_ET1_CH5	ETIMER1_ETC_5		
10	GND		Ground	–

Chapter 3 Design Consideration

This chapter provides additional information on the functional blocks of the MPC5744P Motor controller board.

3.1 MPC5744P Features

The Qorivva MPC5744P microcontroller, a SafeAssure solution, is a 32-bit embedded controller designed for advanced driver assistance systems with RADAR, CMOS imaging, LIDAR and ultrasonic sensors, and multiple 3-phase motor control applications as in hybrid electric vehicles (HEV) in automotive and high temperature industrial applications.

The availability of up to three FlexPWM modules with a four 12bit Analog-to-Digital Converters (ADC) modules, and a Cross Triggering Unit (CTU) makes the MPC5744P microcontrollers suitable for 3-phase PMSM and BLDC motor control applications.

Table 3-1. MPC5744P device features (257 MAPBGA package)

Feature	Device
	MPC5744P
Process	C55
CPU	e200z4201n3 and e200z419 (cut 1) e200z4251n3 and e200z424 (cut 2)
Execution speed	Up to 180MHz
Code Flash/ Data Flash	2.5 MB
RAM	384 KB
eTimer	3 modules, 6 channels
PIT	1 Module x 4 Channels
ADC	4 x 12-bit (25 external channels)
CTU	2 Modules
eDMA	32 channels in delayed lock-step
LINFlex	2 Modules
SPI (DSPI)	3 Modules
FlexRay	1 Module x 64 message buffers
SENT	2 Modules x 2 Channels
FlexCAN	3 Modules x 64 message buffers
FlexPWM	2 Modules x 4 Channels
Sine - wave generator	32 Point
Debug	JTAG; NEXUS Class 3+; AURORA

Design Consideration

The device block diagram is shown in [Figure 3-1](#). A detailed description of the MCU can be found in the datasheet or reference manual.

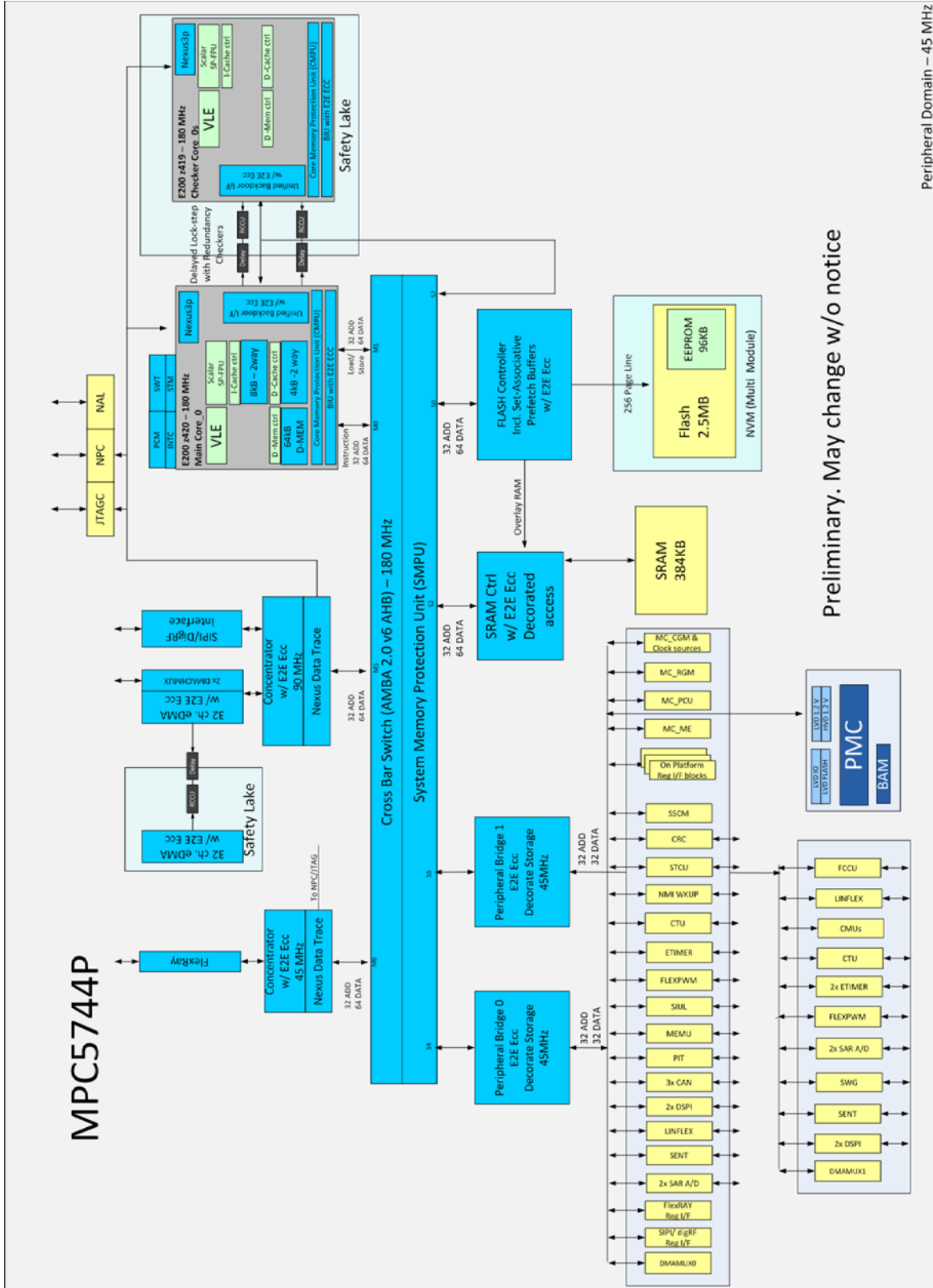


Figure 3-1. Family Block Diagram

MPC5744P Motor Controller Board, Draft

3.2 Clock source

The MPC5744P uses an external 40.00 MHz crystal oscillator mounted on the board and internal PLL0 to multiply the input frequency and achieve its 180 MHz maximum operating frequency. The second PLL1 is used to achieve suitable frequency for internal Motor control and communication modules. The MPC5744P can also use internal 16 MHz RC oscillator as a clock source. For detailed clock distribution architecture see [Figure 3-2](#).

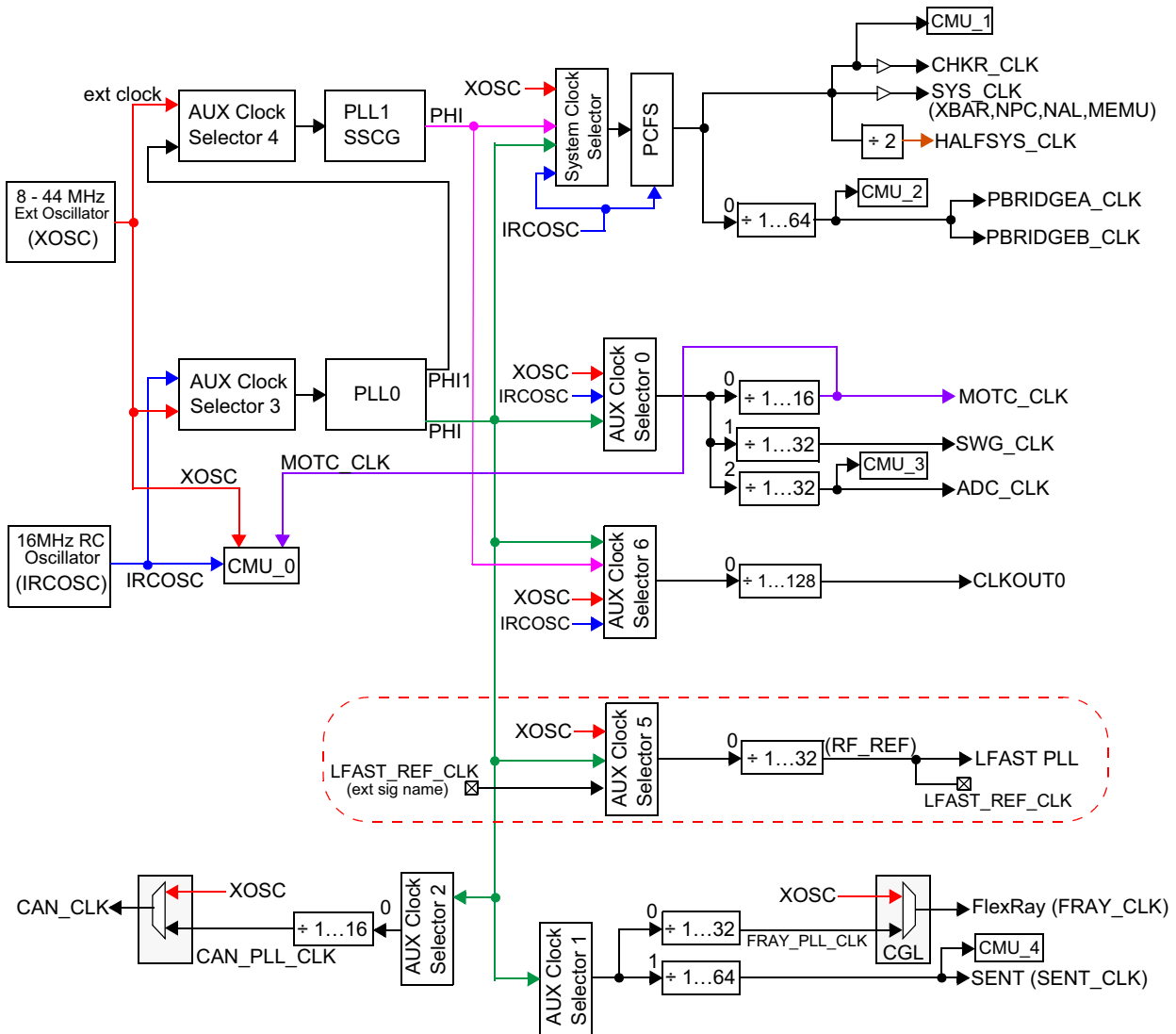


Figure 3-2. MPC5744P clock distribution

3.3 Power Supplies and Voltage Reference

The MPC5744P Dual Motor Controller Board can be supplied from two different power supply inputs. The first one uses a 2.1/2.5 mm DC power plug and the second option is to use a one of the PCIE connectors. Which one is more suitable depends on the application type. The controller board provides a +5VDC voltage regulation for the SENT interface, MCU_3.3V for the MCU, MCU supporting logic and LED indicators, Vdda to supply external analog modules and Vref to provide the reference voltage for the ADC module. Power applied to the MPC5744P Controller Board is indicated by a power-on LEDs. The block diagram is shown in Figure 3-3.

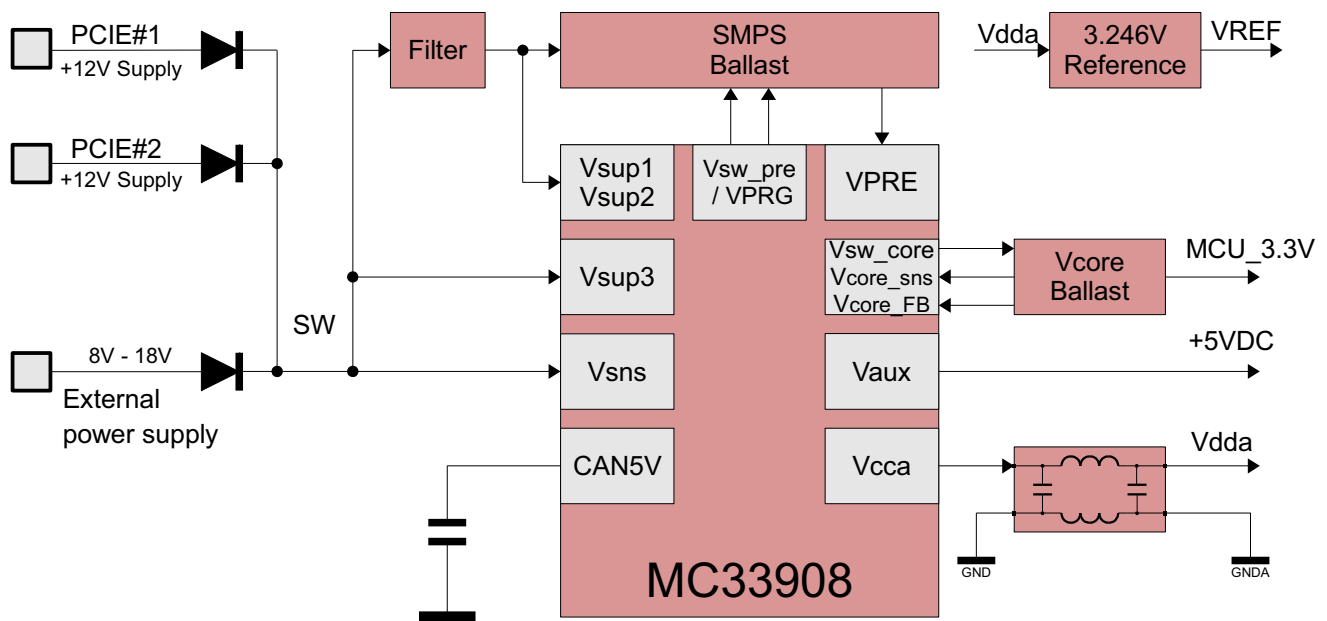


Figure 3-3. Power supply

3.4 Analog Signal Sensing

The analog input signals listed in [Table 2-1](#), [Table](#) , and [Table 2-10](#) are connected to the analog to digital converters through the RC filters. The time constant of RC filter is set with respect to the input signal bandwidth.

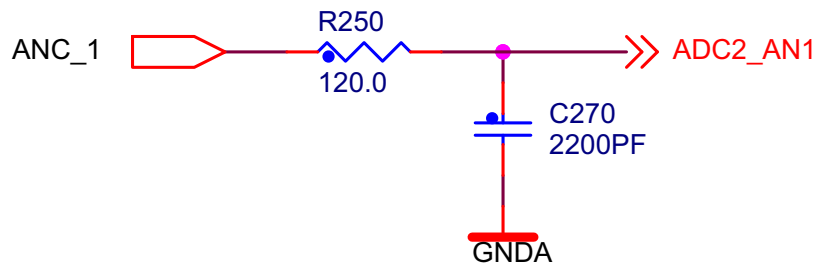


Figure 3-4. Analog Sensing Circuit example

3.5 Brake Signal

The brake signal output is used to control the DC-bus resistor switch. See [Table 3-2](#) .

Table 3-2. UNI3 Brake Signals

Interface Pin	Signal	J600 UNI3_1 to MCU Signal	J700 UNI3_1 to MCU Signal	Direction
A21	Mx_PWM_B3	SIUL_GPIO[103]	SIUL_GPIO[107]	Digital output

3.6 CAN Bus interface

The FlexCAN module is a communication controller implementing the CAN protocol according to the CAN 2.0B protocol specification, which supports both standard and extended message frames. A number of Message Buffers (32) is also supported. Please refer to the MPC5744P reference manual for a detailed description. The Freescale system basis chip MC33908 with CAN physical layer is used as the CAN hardware interface.

3.7 SENT Interfaces

The Single Edge Nibble Transmission (SENT) Receiver (SRX) module is a multichannel receiver for receiving serial data frames which are being transmitted by a sensor implementing the SENT encoding scheme and present them to the CPU for further processing. This module is based on the SAE J2716. As per this standard, the SENT protocol is intended for use in applications where high resolution sensor data needs to be communicated from a sensor to an Engine Control Unit (ECU). It is intended as a replacement for the lower resolution methods of 10 bit A/Ds and PWM and as a simpler low-cost alternative to CAN or LIN. The implementation assumes that the sensor is a smart sensor containing a microprocessor or dedicated logic device (ASIC) to create the signal. Please refer to the MPC5744P reference manual for a detailed description.

Chapter 4 Electrical Characteristics

The electrical characteristics in [Table 4-1](#) apply to an operation at 25 °C.

Table 4-1. Electrical Characteristics

Characteristic	Symbol	Min	Typ	Max	Units
Power supply Voltage	V_{DC}	8	12	18	V
Current consumption ⁽¹⁾	I_{CC}		40		mA
Input Voltage Range	V_{IN}	0	–	5	V

¹—12V power supply, MCU without software



Chapter 5 Board Set-up Guide

The board is designed to be supplied either by the PCIE#1 or PCIE#2 interface or by using the on-board J6 connector, with a power supply voltage from 8 to 18V. When using the board as a stand-alone EVB, connect the power supply to J6. In the case of board operation with the power stage, it is recommended to supply the board using the PCIE interface.

The MPC5744P PCIE Controller Board is designed for operation with up to two the Freescale MC33937A based 3-Phase low-voltage power stages, see [Figure 5-1](#). The complete 3-phase PMSM / BLDC Development Kit can be ordered at <http://www.freescale.com/AutoMCDevKits>.

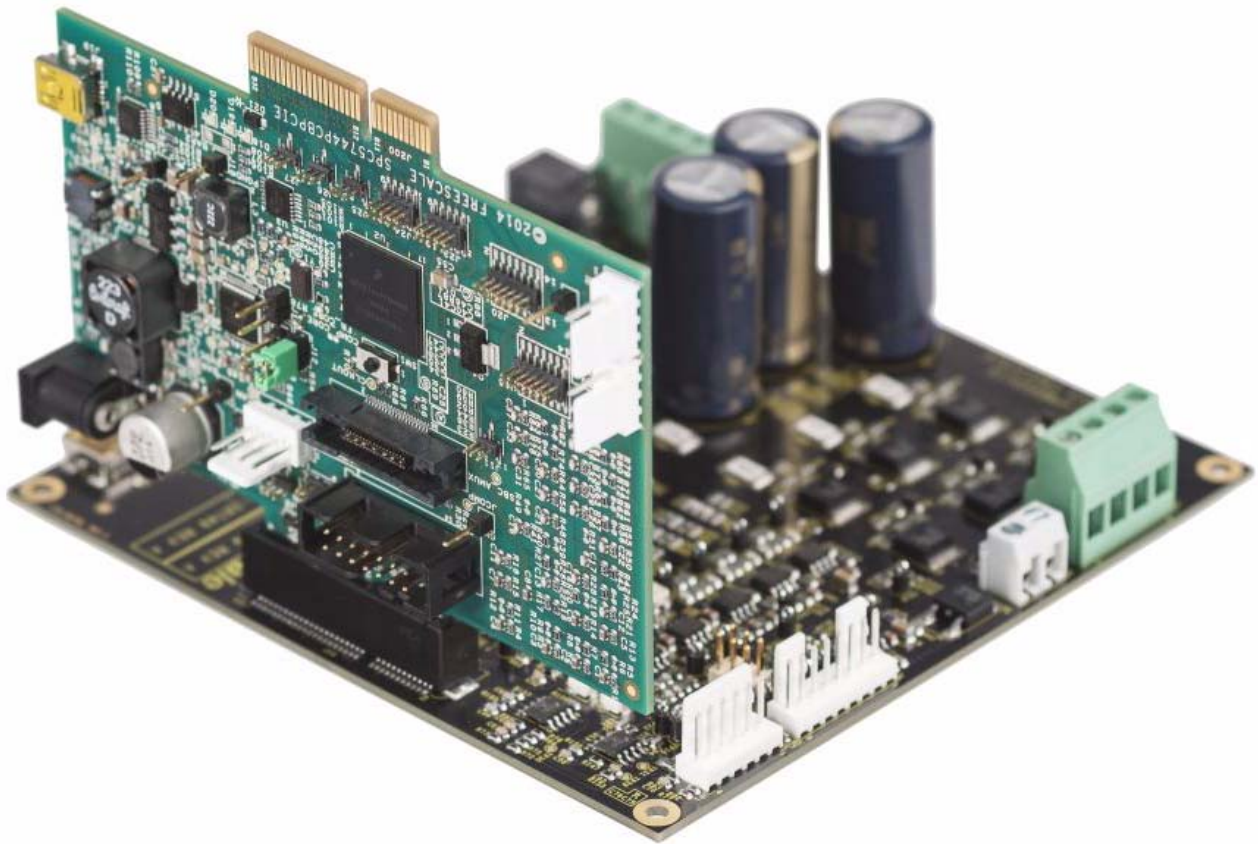


Figure 5-1. 3-Phase PMSM Sensor / Sensorless Development Kit



Appendix A References

1. 3-phase Low-Voltage Power Stage, www.freescale.com/AutoMCDevKits
2. MPC5744P Family Reference Manual, MPC5744PRM Rev. 1, 02/2013
3. FreeMASTER Run-time Debugging Tool, www.freescale.com/FREEMASTER

References

Appendix B Abbreviations

ADC	Analog to Digital Converter
BEMF.....	Back Electromotive Force
BLDC.....	Brushless DC Motor
CAN	Controller Area Network
EVB	Evaluation Board
LIN.....	Local Interconnect Network
MCU	Microcontroller Unit
PC.....	Personal Computer
PCI-E	PCI Express
PMSM.....	Permanent Magnet Synchronous Motor
PWM.....	Pulse Width Modulation
SBC.....	System Basis Chip
SENT	Single Edge Nibble Transmission
SMPS	Switch Mode Power Supply
USB.....	Universal Serial Bus

Appendix C MPC5744P Controller Board Schematic

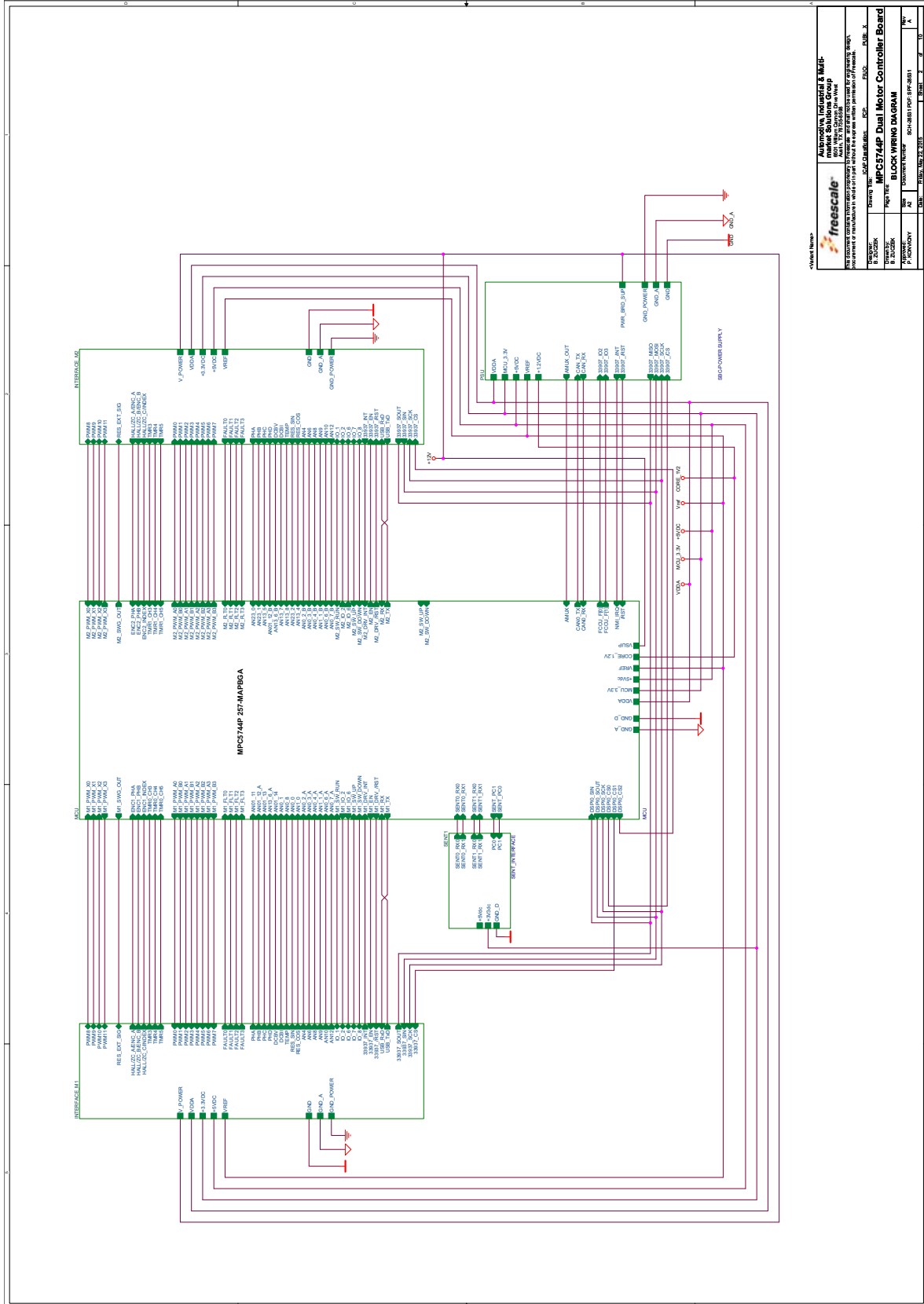
Table of Contents	
01	TITLE PAGE
02	BLOCK DIAGRAM
03	MOTOR INTERFACE #1
04	MOTOR INTERFACE #2
05	MCU MPC5744P ADC
06	MCU MPC5744P
07	MCU MPC5744P HEADERS
08	MCU MPC5744P PWR + GND
09	POWER SUPPLY MC33908
10	SENT INTERFACE

<Vendor Name>

SCHEMATIC REVISIONS			
REV	BY	DATE	DESCRIPTION
M	AT	3/17/2015	Initial production version
A	AT	9/23/2015	Schematic BOM data update



		Automotive, Industrial & Multi-market Solutions Group Freescale Semiconductor, Inc. 2001 W. York Street Austin, TX 78761-2900	
DSUB2: B. BUCZEK Drawn By: B. BUCZEK Approved: P. KONIYON	Drawing Title: CAP Classification: FCP RLOC:	Drawing Title: MPC5744P-CONTROLLER BOARD	RLOC: X
This document contains information proprietary to Freescale and shall not be used for engineering design, procurement or manufacture in whole or in part without the express written permission of Freescale.		Title Page	
Size: A3	Document Number: SCH-28351 PDF: SPF-28351	Rev: A	Rev: A
Date: Feb 22, 2015		Sheet: 1 of 10	10

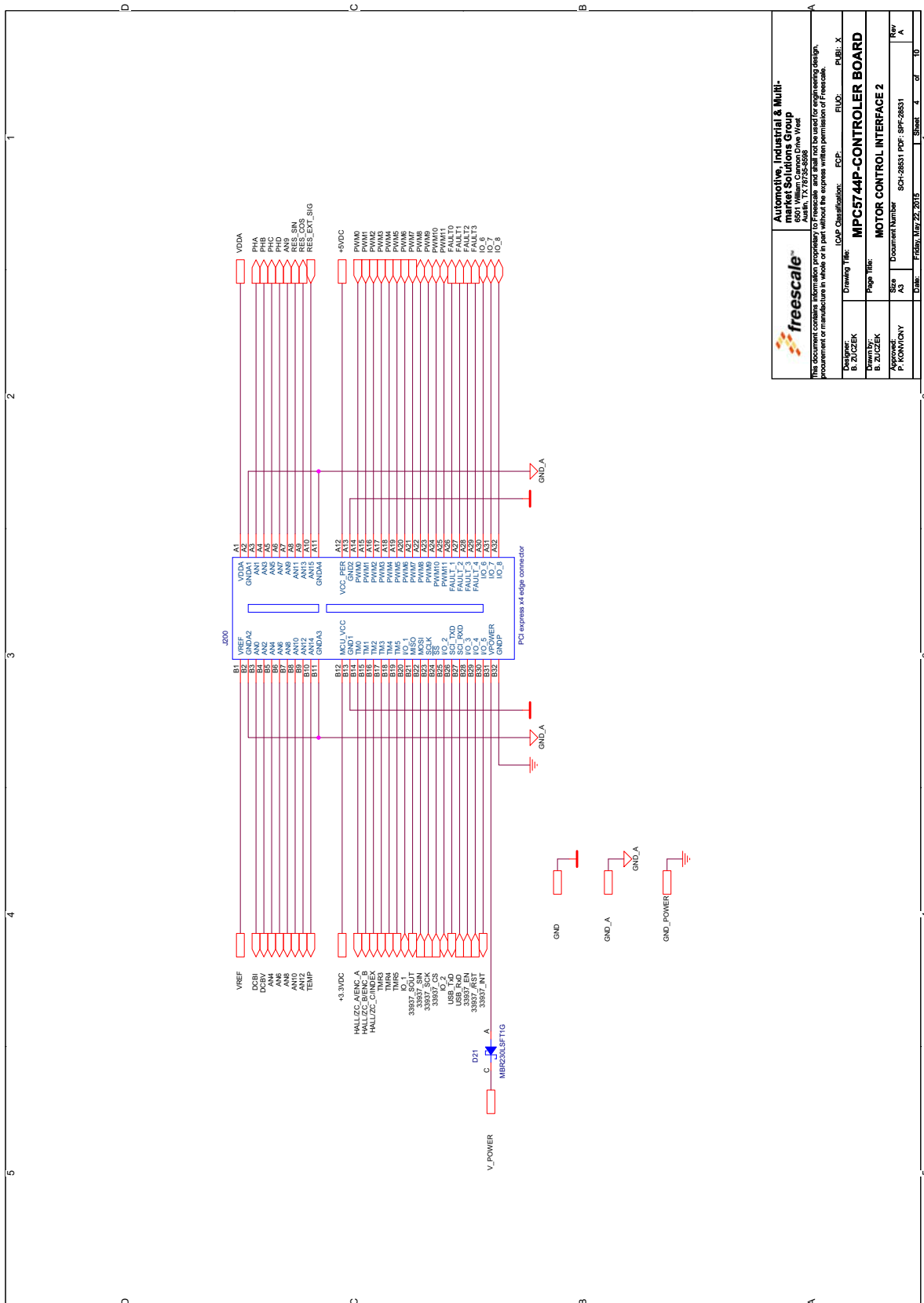


Rev: 1.0

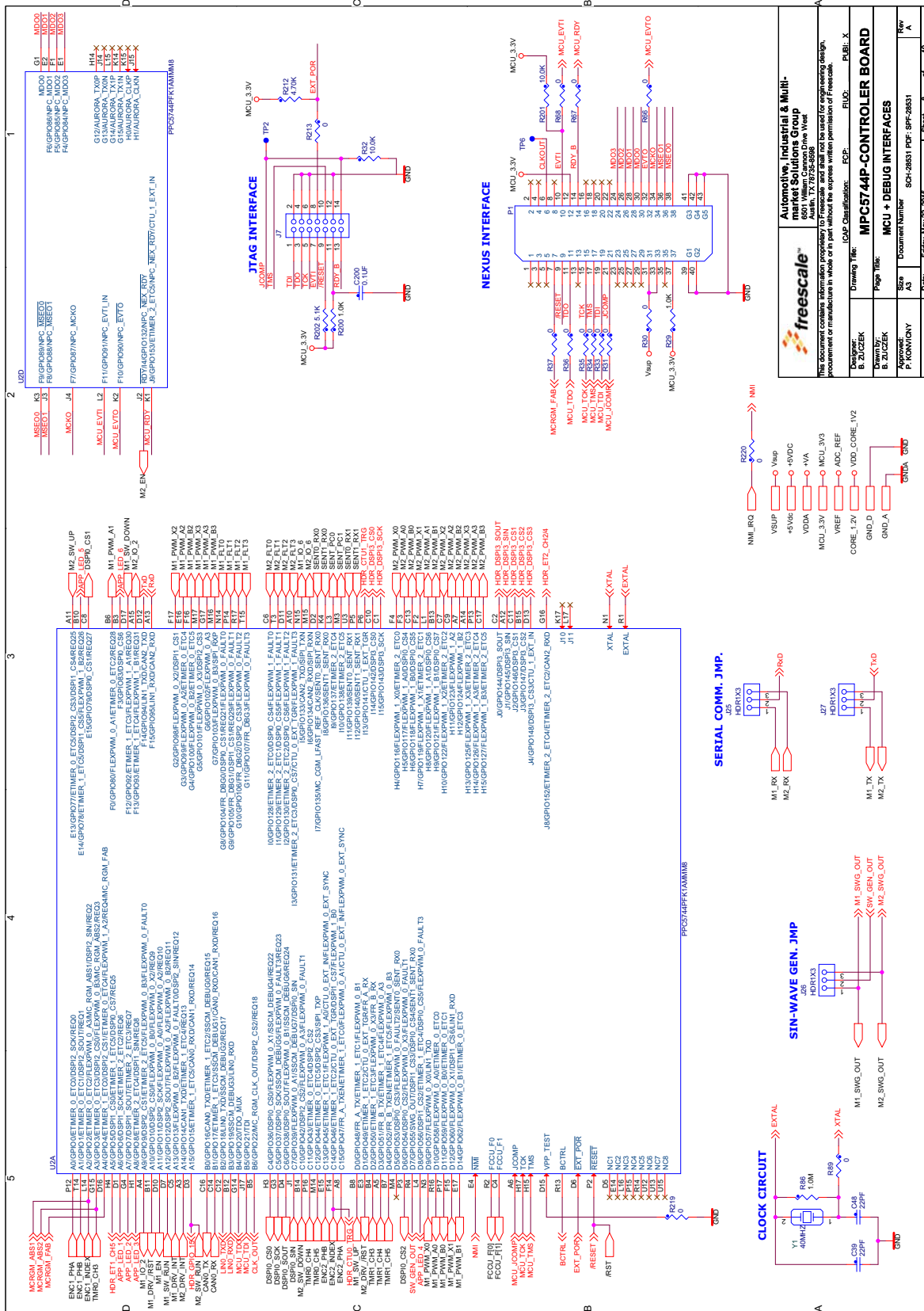
freescale Automotive, Industrial & Mobile Solutions Group
 Freescale Semiconductor, Inc. 1988 E. Erie Ave., Chicago, IL 60618
 Freescale Semiconductor is a trademark of Freescale Semiconductor, Inc.
 Freescale, the Freescale logo, and the Freescale logo are trademarks of Freescale Semiconductor, Inc.

Doc ID: 4033
 Title: MPC5744P Dual Motor Controller Board
 Part Number: 4033
 Document Number: 4033
 Date: 10/15/2010

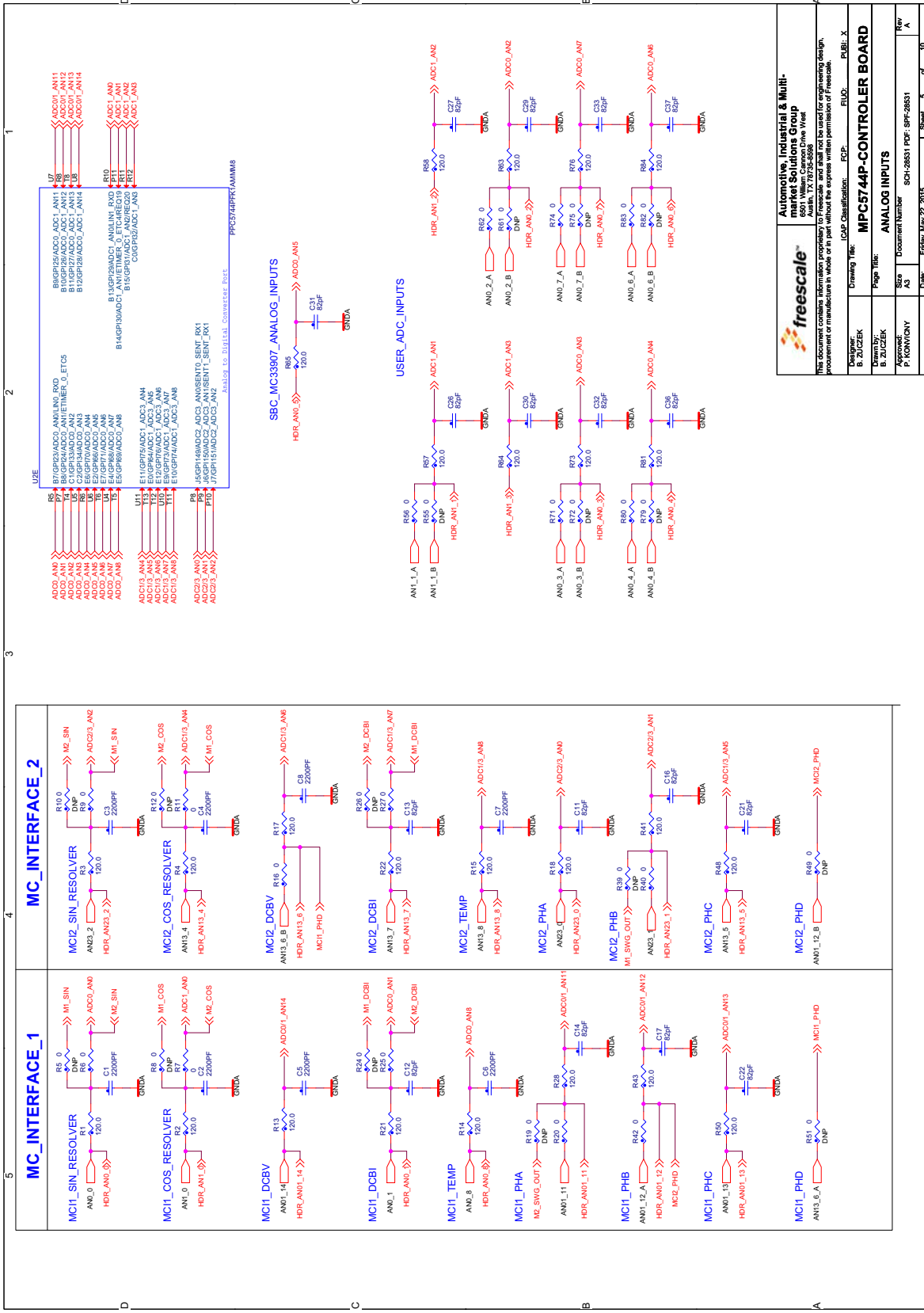
MPC5744P Motor Controller Board, Draft



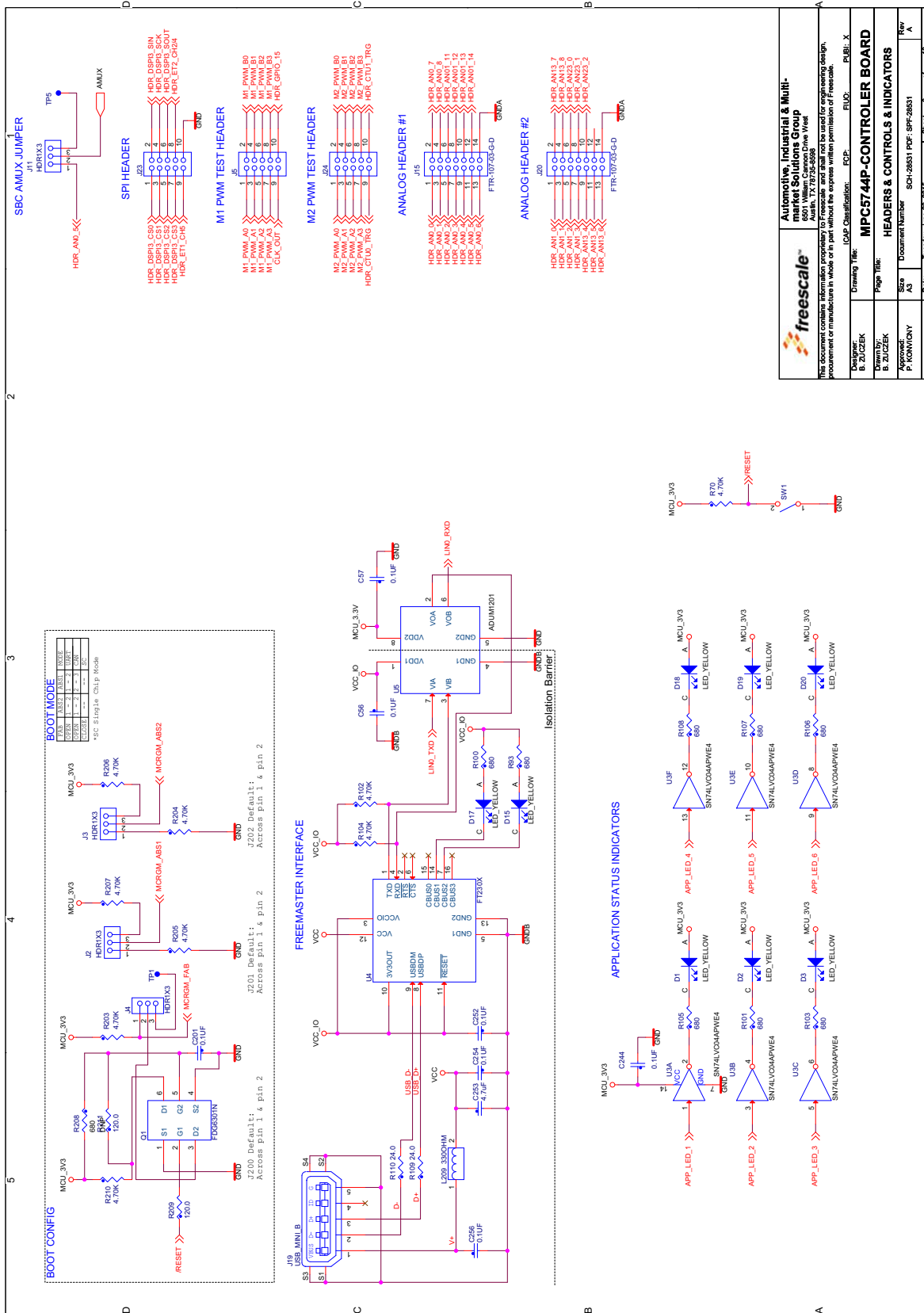
		Automotive, Industrial & Multi-market Solutions Group 6801 Williams Cannon Drive, Austin, TX 78752-5898	
This document contains Freescale Proprietary and Confidential Information. No part of this document may be reproduced, stored in a retrieval system, or transmitted, in any form or by any means, without the express written permission of Freescale.			
Drawing Title:	Drawing No.:	ECP:	P/B/L:
Designer:	B. DUCZER	FCP:	P/B/L:
Document Number:	SCH-29831	PDF:	SPK-29831
Date:	04/22/2015	Rev:	1
Date:	04/22/2015	Sheet:	4 of 10



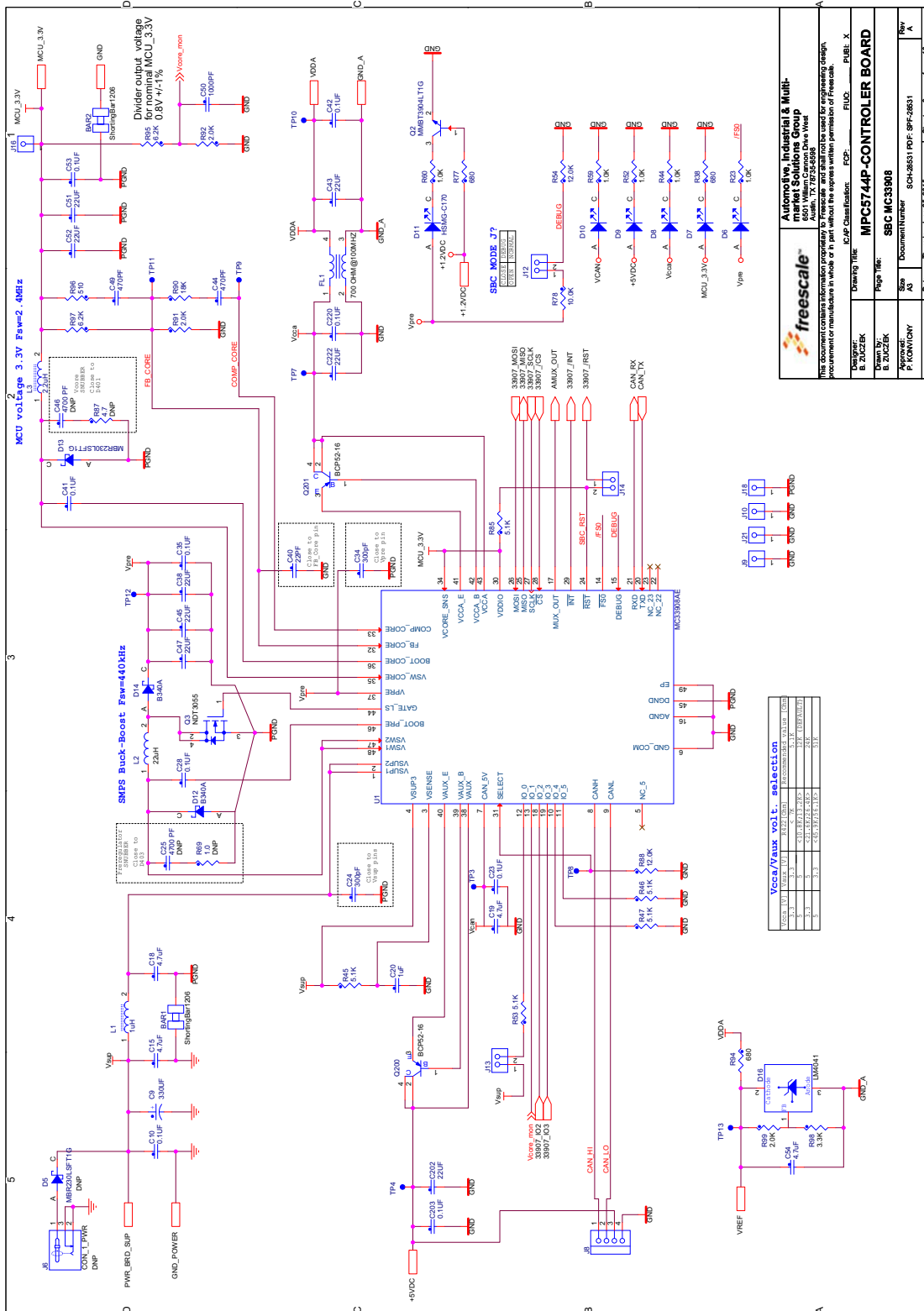
MPC5744P Motor Controller Board, Draft



		Automotive, Industrial & Multi-Market Solutions Group 6501 Williams Cannon Drive West Austin, TX 78752-5888 This document contains Freescale Corporation's confidential information. Its use for any other purpose without the express written permission of Freescale.	
Designer: B. BUCZK	Drawing Title: MPC5744P-CONTROLLER BOARD	ECU Classification: FCP	ECU: PRIBL_X
Drawn by: B. BUCZK	Page No.: 1	Document Number: SCH-29851	Rev: 1
Approved by: T. KOWALCZYK	Date: 08/22/2015	Part Number: SCH-29851	Rev: 1
Date: 08/22/2015	Sheet: 5	of: 10	



		Automotive, Industrial & Multi-Market Solutions Group 6801 Williams Cannon Drive West Austin, TX 78752-5888 Freescale Semiconductor is a registered trademark of Freescale Semiconductor, Inc. All rights reserved. Freescale and the Freescale logo are trademarks of Freescale Semiconductor, Inc.	
Designer: B. ZUCZAK	Drawing No.: MCP-5744P-CONTROLS	ECP: R1811_X	Rev: 1
Drawn by: B. ZUCZAK	Page No.: 1	Document Number: SCH-29851	Rev: 1
Approved by: P. KOWALOVY	Date: 06/23/2015	Document Number: SCH-29851	Rev: 1
Date: 06/23/2015	Sheet: 6	Document Number: SCH-29851	Rev: 1

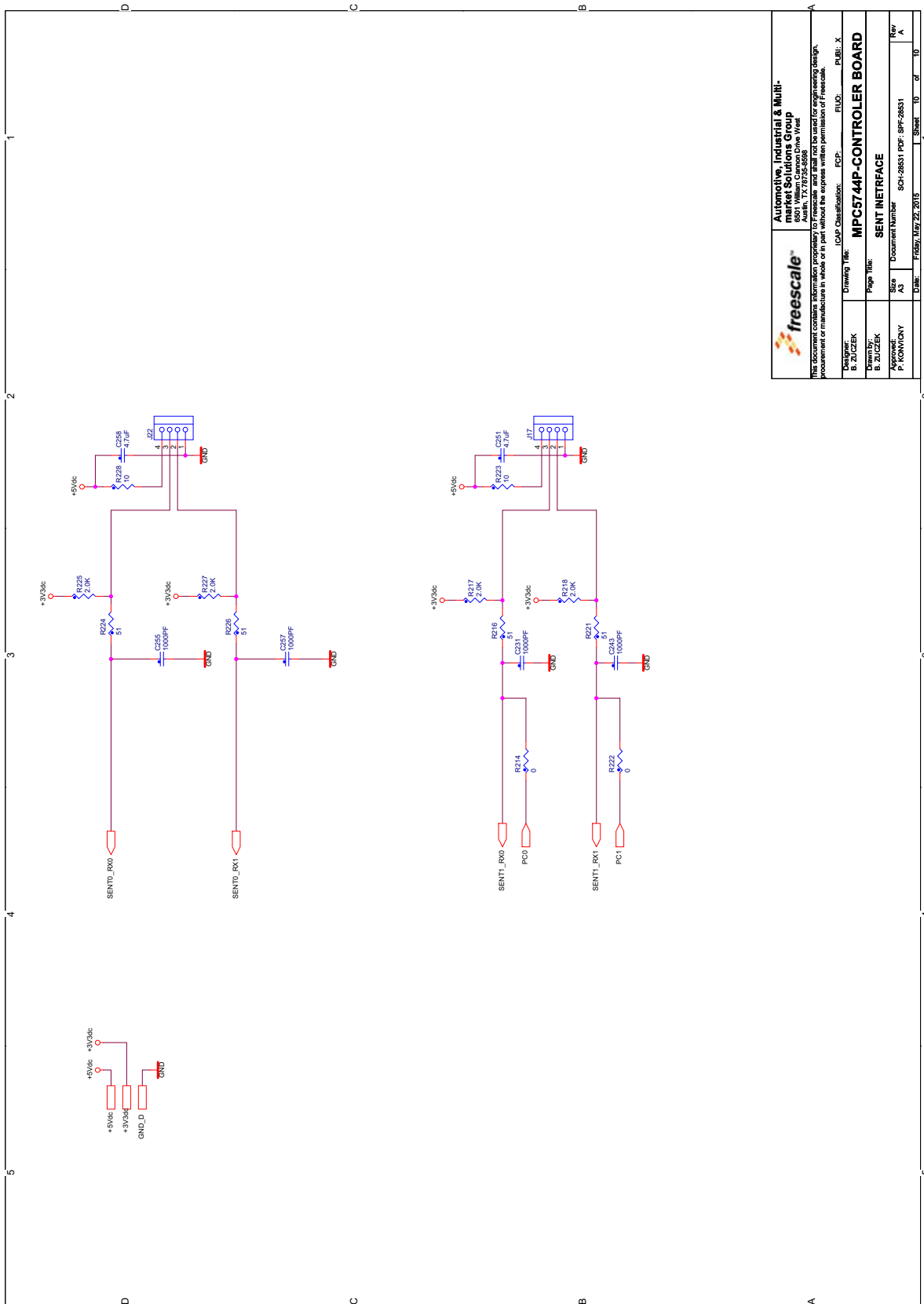


V_{cc}/V_{aux} vol. L selection

V _{CC} (V)	V _{AUX} (V)	R1 (kΩ)	R2 (kΩ)	R3 (kΩ)	R4 (kΩ)	R5 (kΩ)	R6 (kΩ)
3.3	3.3	1.0	5.1	5.1	5.1	5.1	5.1
5.0	5.0	1.0	5.1	5.1	5.1	5.1	5.1
1.8	1.8	1.0	5.1	5.1	5.1	5.1	5.1
1.2	1.2	1.0	5.1	5.1	5.1	5.1	5.1
1.5	1.5	1.0	5.1	5.1	5.1	5.1	5.1
2.5	2.5	1.0	5.1	5.1	5.1	5.1	5.1
3.0	3.0	1.0	5.1	5.1	5.1	5.1	5.1
3.3	3.3	1.0	5.1	5.1	5.1	5.1	5.1
3.6	3.6	1.0	5.1	5.1	5.1	5.1	5.1
3.9	3.9	1.0	5.1	5.1	5.1	5.1	5.1
4.2	4.2	1.0	5.1	5.1	5.1	5.1	5.1
4.5	4.5	1.0	5.1	5.1	5.1	5.1	5.1
4.8	4.8	1.0	5.1	5.1	5.1	5.1	5.1
5.1	5.1	1.0	5.1	5.1	5.1	5.1	5.1
5.4	5.4	1.0	5.1	5.1	5.1	5.1	5.1
5.7	5.7	1.0	5.1	5.1	5.1	5.1	5.1
6.0	6.0	1.0	5.1	5.1	5.1	5.1	5.1
6.3	6.3	1.0	5.1	5.1	5.1	5.1	5.1
6.6	6.6	1.0	5.1	5.1	5.1	5.1	5.1
6.9	6.9	1.0	5.1	5.1	5.1	5.1	5.1
7.2	7.2	1.0	5.1	5.1	5.1	5.1	5.1
7.5	7.5	1.0	5.1	5.1	5.1	5.1	5.1
7.8	7.8	1.0	5.1	5.1	5.1	5.1	5.1
8.1	8.1	1.0	5.1	5.1	5.1	5.1	5.1
8.4	8.4	1.0	5.1	5.1	5.1	5.1	5.1
8.7	8.7	1.0	5.1	5.1	5.1	5.1	5.1
9.0	9.0	1.0	5.1	5.1	5.1	5.1	5.1
9.3	9.3	1.0	5.1	5.1	5.1	5.1	5.1
9.6	9.6	1.0	5.1	5.1	5.1	5.1	5.1
9.9	9.9	1.0	5.1	5.1	5.1	5.1	5.1
10.2	10.2	1.0	5.1	5.1	5.1	5.1	5.1
10.5	10.5	1.0	5.1	5.1	5.1	5.1	5.1
10.8	10.8	1.0	5.1	5.1	5.1	5.1	5.1
11.1	11.1	1.0	5.1	5.1	5.1	5.1	5.1
11.4	11.4	1.0	5.1	5.1	5.1	5.1	5.1
11.7	11.7	1.0	5.1	5.1	5.1	5.1	5.1
12.0	12.0	1.0	5.1	5.1	5.1	5.1	5.1
12.3	12.3	1.0	5.1	5.1	5.1	5.1	5.1
12.6	12.6	1.0	5.1	5.1	5.1	5.1	5.1
12.9	12.9	1.0	5.1	5.1	5.1	5.1	5.1
13.2	13.2	1.0	5.1	5.1	5.1	5.1	5.1
13.5	13.5	1.0	5.1	5.1	5.1	5.1	5.1
13.8	13.8	1.0	5.1	5.1	5.1	5.1	5.1
14.1	14.1	1.0	5.1	5.1	5.1	5.1	5.1
14.4	14.4	1.0	5.1	5.1	5.1	5.1	5.1
14.7	14.7	1.0	5.1	5.1	5.1	5.1	5.1
15.0	15.0	1.0	5.1	5.1	5.1	5.1	5.1
15.3	15.3	1.0	5.1	5.1	5.1	5.1	5.1
15.6	15.6	1.0	5.1	5.1	5.1	5.1	5.1
15.9	15.9	1.0	5.1	5.1	5.1	5.1	5.1
16.2	16.2	1.0	5.1	5.1	5.1	5.1	5.1
16.5	16.5	1.0	5.1	5.1	5.1	5.1	5.1
16.8	16.8	1.0	5.1	5.1	5.1	5.1	5.1
17.1	17.1	1.0	5.1	5.1	5.1	5.1	5.1
17.4	17.4	1.0	5.1	5.1	5.1	5.1	5.1
17.7	17.7	1.0	5.1	5.1	5.1	5.1	5.1
18.0	18.0	1.0	5.1	5.1	5.1	5.1	5.1
18.3	18.3	1.0	5.1	5.1	5.1	5.1	5.1
18.6	18.6	1.0	5.1	5.1	5.1	5.1	5.1
18.9	18.9	1.0	5.1	5.1	5.1	5.1	5.1
19.2	19.2	1.0	5.1	5.1	5.1	5.1	5.1
19.5	19.5	1.0	5.1	5.1	5.1	5.1	5.1
19.8	19.8	1.0	5.1	5.1	5.1	5.1	5.1
20.1	20.1	1.0	5.1	5.1	5.1	5.1	5.1
20.4	20.4	1.0	5.1	5.1	5.1	5.1	5.1
20.7	20.7	1.0	5.1	5.1	5.1	5.1	5.1
21.0	21.0	1.0	5.1	5.1	5.1	5.1	5.1
21.3	21.3	1.0	5.1	5.1	5.1	5.1	5.1
21.6	21.6	1.0	5.1	5.1	5.1	5.1	5.1
21.9	21.9	1.0	5.1	5.1	5.1	5.1	5.1
22.2	22.2	1.0	5.1	5.1	5.1	5.1	5.1
22.5	22.5	1.0	5.1	5.1	5.1	5.1	5.1
22.8	22.8	1.0	5.1	5.1	5.1	5.1	5.1
23.1	23.1	1.0	5.1	5.1	5.1	5.1	5.1
23.4	23.4	1.0	5.1	5.1	5.1	5.1	5.1
23.7	23.7	1.0	5.1	5.1	5.1	5.1	5.1
24.0	24.0	1.0	5.1	5.1	5.1	5.1	5.1
24.3	24.3	1.0	5.1	5.1	5.1	5.1	5.1
24.6	24.6	1.0	5.1	5.1	5.1	5.1	5.1
24.9	24.9	1.0	5.1	5.1	5.1	5.1	5.1
25.2	25.2	1.0	5.1	5.1	5.1	5.1	5.1
25.5	25.5	1.0	5.1	5.1	5.1	5.1	5.1
25.8	25.8	1.0	5.1	5.1	5.1	5.1	5.1
26.1	26.1	1.0	5.1	5.1	5.1	5.1	5.1
26.4	26.4	1.0	5.1	5.1	5.1	5.1	5.1
26.7	26.7	1.0	5.1	5.1	5.1	5.1	5.1
27.0	27.0	1.0	5.1	5.1	5.1	5.1	5.1
27.3	27.3	1.0	5.1	5.1	5.1	5.1	5.1
27.6	27.6	1.0	5.1	5.1	5.1	5.1	5.1
27.9	27.9	1.0	5.1	5.1	5.1	5.1	5.1
28.2	28.2	1.0	5.1	5.1	5.1	5.1	5.1
28.5	28.5	1.0	5.1	5.1	5.1	5.1	5.1
28.8	28.8	1.0	5.1	5.1	5.1	5.1	5.1
29.1	29.1	1.0	5.1	5.1	5.1	5.1	5.1
29.4	29.4	1.0	5.1	5.1	5.1	5.1	5.1
29.7	29.7	1.0	5.1	5.1	5.1	5.1	5.1
30.0	30.0	1.0	5.1	5.1	5.1	5.1	5.1

freescale Automotive, Industrial & Multi-market Solutions Group
This document contains information proprietary to Freescale and shall not be used for engineering design, procurement or manufacture in whole or in part without the express written permission of Freescale.
 Freescale Semiconductor, Inc. | www.freescale.com | Rev. 1.0 | 01/2013

Document Number: **MPC5744P-CONTROLLER BOARD**
 Page: 1 of 1
 Drawing Title: **88C MC3988**
 Drawing Date: 09/25/2013



freescale		Automotive, Industrial & Multi-Market Solutions Group	
This document contains information proprietary to Freescale and shall not be used for engineering design, development or manufacture in whole or in part without the express written permission of Freescale.			
Designer:	Drawn By:	Approval:	Doc#:
B. ZUCZEK	B. ZUCZEK	P. KONIGSONY	FR693, May 22, 2015
Doc#:	Page Title:	Document Number:	Rev
MPC5744P-CONTROLLER BOARD	SENT INTRFACE	SCH-28531 PDF: 89F-28531	A
Doc#:	Page Title:	Document Number:	Rev
FR693, May 22, 2015	SENT INTRFACE	SCH-28531 PDF: 89F-28531	A

MPC5744P Motor Controller Board, Draft

How to Reach Us:

Home Page:

www.freescale.com

Web Support:

http://www.freescale.com/support

USA/Europe or Locations Not Listed:

Freescale Semiconductor, Inc.
Technical Information Center, EL516
2100 East Elliot Road
Tempe, Arizona 85284
1-800-521-6274 or +1-480-768-2130
www.freescale.com/support

Europe, Middle East, and Africa:

Freescale Halbleiter Deutschland GmbH
Technical Information Center
Schatzbogen 7
81829 Muenchen, Germany
+44 1296 380 456 (English)
+46 8 52200080 (English)
+49 89 92103 559 (German)
+33 1 69 35 48 48 (French)
www.freescale.com/support

Japan:

Freescale Semiconductor Japan Ltd. Headquarters
ARCO Tower 15F
1-8-1, Shimo-Meguro, Meguro-ku,
Tokyo 153-0064
Japan
0120 191014 or +81 3 5437 9125
support.japan@freescale.com

Asia/Pacific:

Freescale Semiconductor China Ltd.
Exchange Building 23F
No. 118 Jianguo Road
Chaoyang District
Beijing 100022
China
+86 10 5879 8000
support.asia@freescale.com

Freescale Semiconductor Literature Distribution Center
1-800-441-2447 or +1-303-675-2140
Fax: +1-303-675-2150
LDCForFreescaleSemiconductor@hibbertgroup.com

Information in this document is provided solely to enable system and software implementers to use Freescale Semiconductor products. There are no express or implied copyright licenses granted hereunder to design or fabricate any integrated circuits or integrated circuits based on the information in this document.

Freescale Semiconductor reserves the right to make changes without further notice to any products herein. Freescale Semiconductor makes no warranty, representation or guarantee regarding the suitability of its products for any particular purpose, nor does Freescale Semiconductor assume any liability arising out of the application or use of any product or circuit, and specifically disclaims any and all liability, including without limitation consequential or incidental damages. "Typical" parameters that may be provided in Freescale Semiconductor data sheets and/or specifications can and do vary in different applications and actual performance may vary over time. All operating parameters, including "Typicals", must be validated for each customer application by customer's technical experts. Freescale Semiconductor does not convey any license under its patent rights nor the rights of others. Freescale Semiconductor products are not designed, intended, or authorized for use as components in systems intended for surgical implant into the body, or other applications intended to support or sustain life, or for any other application in which the failure of the Freescale Semiconductor product could create a situation where personal injury or death may occur. Should Buyer purchase or use Freescale Semiconductor products for any such unintended or unauthorized application, Buyer shall indemnify and hold Freescale Semiconductor and its officers, employees, subsidiaries, affiliates, and distributors harmless against all claims, costs, damages, and expenses, and reasonable attorney fees arising out of, directly or indirectly, any claim of personal injury or death associated with such unintended or unauthorized use, even if such claim alleges that Freescale Semiconductor was negligent regarding the design or manufacture of the part.

Freescale™ and the Freescale logo are trademarks of Freescale Semiconductor, Inc. [The PowerPC name is a trademark of IBM Corp. and is used under license. The described product contains a PowerPC processor core. The PowerPC name is a trademark of IBM Corp. and used under license. The described product is a PowerPC microprocessor. The PowerPC name is a trademark of IBM Corp. and is used under license. The described product is a PowerPC microprocessor core. The PowerPC name is a trademark of IBM Corp. and is used under license.](#) All other product or service names are the property of their respective owners.

© Freescale Semiconductor, Inc. 2011. All rights reserved.

MPC5744PDMCBUM
Rev. 1
06/2012





X-ON Electronics

Largest Supplier of Electrical and Electronic Components

Click to view similar products for [Power Management IC Development Tools](#) category:

Click to view products by [NXP](#) manufacturer:

Other Similar products are found below :

[EVAL-ADM1168LQEBZ](#) [EVB-EP5348UI](#) [MIC23451-AAAYFL EV](#) [MIC5281YMME EV](#) [DA9063-EVAL](#) [ADP122-3.3-EVALZ](#) [ADP130-0.8-EVALZ](#) [ADP130-1.2-EVALZ](#) [ADP130-1.5-EVALZ](#) [ADP130-1.8-EVALZ](#) [ADP1712-3.3-EVALZ](#) [ADP1714-3.3-EVALZ](#) [ADP1715-3.3-EVALZ](#) [ADP1716-2.5-EVALZ](#) [ADP1740-1.5-EVALZ](#) [ADP1752-1.5-EVALZ](#) [ADP1828LC-EVALZ](#) [ADP1870-0.3-EVALZ](#) [ADP1871-0.6-EVALZ](#) [ADP1873-0.6-EVALZ](#) [ADP1874-0.3-EVALZ](#) [ADP1882-1.0-EVALZ](#) [ADP199CB-EVALZ](#) [ADP2102-1.25-EVALZ](#) [ADP2102-1.875EVALZ](#) [ADP2102-1.8-EVALZ](#) [ADP2102-2-EVALZ](#) [ADP2102-3-EVALZ](#) [ADP2102-4-EVALZ](#) [ADP2106-1.8-EVALZ](#) [ADP2147CB-110EVALZ](#) [AS3606-DB](#) [BQ24010EVM](#) [BQ24075TEVM](#) [BQ24155EVM](#) [BQ24157EVM-697](#) [BQ24160EVM-742](#) [BQ24296MEVM-655](#) [BQ25010EVM](#) [BQ3055EVM](#) [NCV891330PD50GEVB](#) [ISLUSBI2CKIT1Z](#) [LM2744EVAL](#) [LM2854EVAL](#) [LM3658SD-AEV/NOPB](#) [LM3658SDEV/NOPB](#) [LM3691TL-1.8EV/NOPB](#) [LM4510SDEV/NOPB](#) [LM5033SD-EVAL](#) [LP38512TS-1.8EV](#)