

# NTAG<sup>®</sup> 5 boost Development Kit

## OM2NTA5332 Quick Start Guide



This kit provides an easy and quick evaluation and development environment for NTAG 5 enabled applications, especially for those leveraging Active Load Modulation (ALM). A broad selection of software packages is available, which are based on modular examples. These can be easily extracted and re-used on any other platform.

The NTAG 5 boost development kit can be stacked on single-board computer boards, MCU evaluation boards (e.g. NXP LPCXpresso Boards, NXP Freedom Boards), or be used standalone.

Note, the antenna part can be broken-off and replaced by any other antenna to fit the desired application.



### Get Started

All documentation and software libraries can be downloaded from the development kit page:

[www.nxp.com/demoboard/OM2NTx5332](http://www.nxp.com/demoboard/OM2NTx5332)

#### NTAG 5 configuration

- ▶ NFC side: RFIDDiscover (available on [DoctStore](#))
- ▶ I<sup>2</sup>C side: Peek & Poke (n/a at the moment)

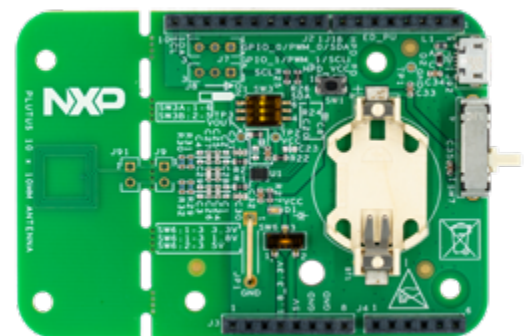
#### µC firmware

- ▶ lpc11uXX
- ▶ KW41
- ▶ NTAG 5 C library

#### Android application

#### iOS application

#### ALM Antenna Design Guide



## More information

Visit the **NTAG 5 boost Product Page** for detailed product information visit <http://www.nxp.com/NTAG5-BOOST> .

Visit the **NFC Community** for a direct exchange with our NFC engineering experts to discuss your project: <https://community.nxp.com/community/identification-security/nfc>

## X-ON Electronics

Largest Supplier of Electrical and Electronic Components

*Click to view similar products for [Interface Development Tools](#) category:*

*Click to view products by [NXP](#) manufacturer:*

Other Similar products are found below :

[DP130SSEVM](#) [ISO3086TEVM-436](#) [ADP5585CP-EVALZ](#) [CHA2066-99F](#) [AS8650-DB](#) [MLX80104 TESTINTERFACE](#) [I2C-CPEV/NOPB](#)  
[ISO35TEVM-434](#) [416100120-3](#) [XR18910ILEVB](#) [XR21B1421IL28-0A-EVB](#) [EVAL-ADM2491EEBZ](#) [MAXREFDES23DB#](#)  
[MAX9286COAXEVKIT#](#) [MAX3100EVKIT](#) [MAX13235EEVKIT](#) [XR21B1424IV64-0A-EVB](#) [CMOD232+](#) [MAX13042EEVKIT+](#)  
[MAX14838EVKIT#](#) [MAXCAM705OV635AAA#](#) [MAX9205EVKIT](#) [DS100BR111AEVK/NOPB](#) [DC241C](#) [MAX9286RCARH3DB#](#)  
[DC1794A](#) [SN65HVS885EVM](#) [DFR0257](#) [XR22404CG28EVB](#) [ZLR964122L](#) [ZLR88822L](#) [EVK-U23-01S](#) [EVK-W262U-00](#) [DC196A-B](#)  
[DC196A-A](#) [DC327A](#) [OM13585UL](#) [MAX16972AGEEVKIT#](#) [MARS1-DEMO3-ADAPTER-GEVB](#) [MAX7315EVKIT+](#) [PIM511](#) [PIM536](#)  
[PIM517](#) [DEV-17512](#) [STR-FUSB3307MPX-PPS-GEVK](#) [MAXREFDES177#](#) [EVAL-ADM2567EEBZ](#) [EVAL-ADN4654EBZ](#)  
[MAX2202XEVKIT#](#) [MAX13171EEVKIT+](#)