



Development  
system for  
solid-state  
RF energy

## RFEL24-500 NXP RF Energy Lab Box

The RFEL24-500 RF energy lab box is a 2 x 250 W, fully integrated RF development system. It is a powerful tool for exploring the benefits of solid-state RF energy. Designed for both RF and non-RF engineers to test and prototype innovative solutions, the RF energy lab box eliminates the need to invest in an extensive RF test bench.

### OVERVIEW

The RF energy lab box uses the capabilities of two RFEM24-250 modules for signal generation with frequency, power and phase control and for monitoring output power, reflected power, current and temperature. The RFEL24-500 with the PC-based GUI has extended features that, among others, enable phase and frequency optimization.

### FEATURES

- ▶ RF signal generator
- ▶ Two 2.45 GHz, 50 ohm, 250 W modules
- ▶ Power, frequency and phase control
- ▶ Operated by PC-based graphical user interface
- ▶ Warnings and error thresholds for safe operation
- ▶ Data logging
- ▶ Thermostatically controlled fans
- ▶ Frequency and phase sweep capabilities for best match optimization
- ▶ High accuracy RF power measurement
- ▶ Continuous monitoring of forward and reflected RF power, current and temperature

### TYPICAL PERFORMANCE

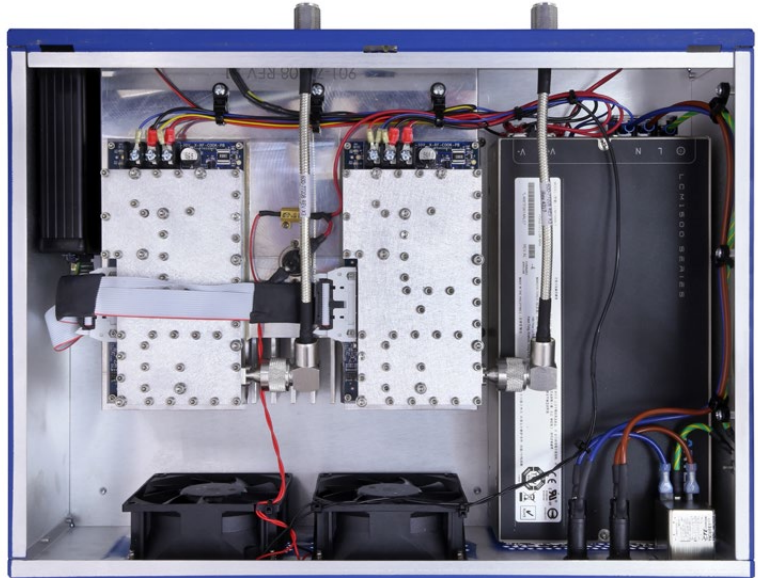
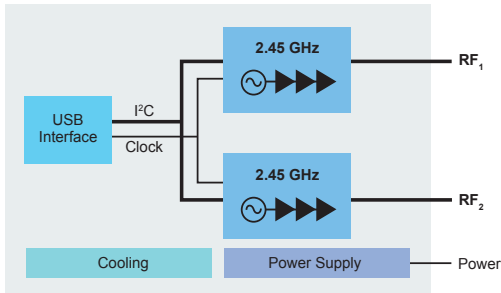
Frequency	2400-2500 MHz
RF power output	250 W / Channel
Efficiency	> 50% (full power)
Operating voltage	100-265 VAC, 1 kW Max
VSWR	Unlimited
RF power measurement	± 5%



## HARDWARE OVERVIEW

RF energy lab box includes:

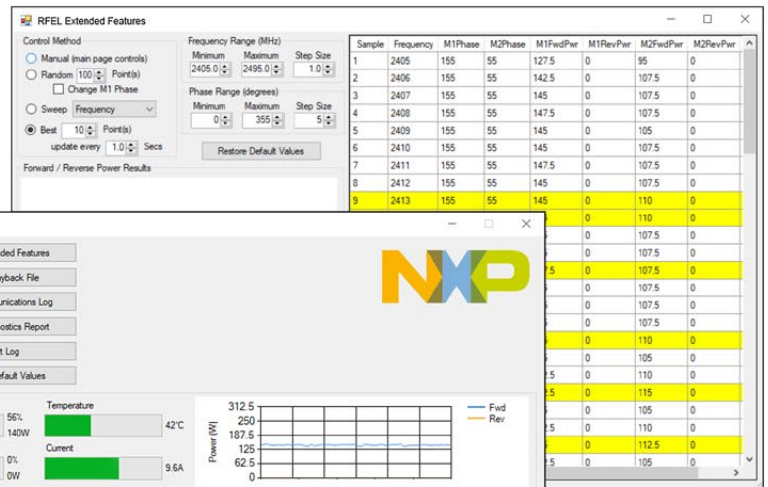
- ▶ Two 2400-2500 MHz, 250 W modules
- ▶ USB to I<sup>2</sup>C interface
- ▶ Power supply unit
- ▶ Heatsink and fans



Size: 13" x 17" x 5"  
(33 cm x 43 cm x 13 cm)

## GRAPHICAL USER INTERFACE

The intuitive PC GUI (graphical user interface) includes an extended features menu that supports frequency and phase sweeps. It automatically finds the best spots that maximize the energy transfer, making access to solid-state RF design easy.



[www.nxp.com/RFenergy](http://www.nxp.com/RFenergy)

NXP and the NXP logo are trademarks of NXP B.V. All other product or service names are the property of their respective owners.  
© 2018 NXP B.V.

RFEL24-500FS Rev. 1  
6/2018

## X-ON Electronics

Largest Supplier of Electrical and Electronic Components

*Click to view similar products for [RF Development Tools](#) category:*

*Click to view products by [NXP](#) manufacturer:*

Other Similar products are found below :

[MAAM-011117](#) [MAAP-015036-DIEEV2](#) [EV1HMC1113LP5](#) [EV1HMC6146BLC5A](#) [EV1HMC637ALP5](#) [EVAL-ADG919EBZ](#) [ADL5363-EVALZ](#) [LMV228SDEVAL](#) [SKYA21001-EVB](#) [SMP1331-085-EVB](#) [EV1HMC618ALP3](#) [EVAL01-HMC1041LC4](#) [MAAL-011111-000SMB](#) [MAAM-009633-001SMB](#) [MASW-000936-001SMB](#) [107712-HMC369LP3](#) [107780-HMC322ALP4](#) [SP000416870](#) [EV1HMC470ALP3](#) [EV1HMC520ALC4](#) [EV1HMC244AG16](#) [EV1HMC539ALP3](#) [EV1HMC6789BLC5A](#) [MAX2614EVKIT#](#) [124694-HMC742ALP5](#) [SC20ASATEA-8GB-STD](#) [MAX2837EVKIT+](#) [MAX2612EVKIT#](#) [MAX2692EVKIT#](#) [EV1HMC629ALP4E](#) [SKY12343-364LF-EVB](#) [108703-HMC452QS16G](#) [EV1HMC863ALC4](#) [EV1HMC427ALP3E](#) [119197-HMC658LP2](#) [EV1HMC647ALP6](#) [ADL5725-EVALZ](#) [MAX2371EVKIT#](#) [106815-HMC441LM1](#) [EV1HMC1018ALP4](#) [UXN14M9PE](#) [MAX2016EVKIT](#) [EV1HMC939ALP4](#) [MAX2410EVKIT](#) [MAX2204EVKIT+](#) [EV1HMC8073LP3D](#) [SIMSA868-DKL](#) [SIMSA868C-DKL](#) [SKY65806-636EK1](#) [SKY68020-11EK1](#)