

Quick Start Guide S08PB16-EVK



Quick Start Guide

GET TO KNOW THE S08PB16-EVK

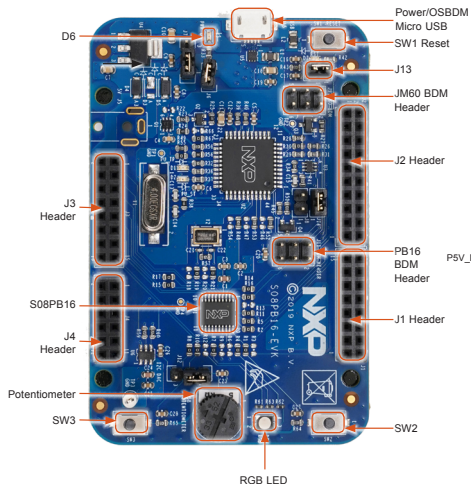


Figure 1: S08PB16-EVK Callouts

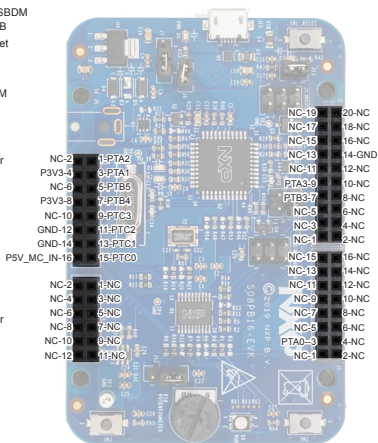


Figure 2: S08PB16-EVK Pin-Outs

STEP-BY-STEP INSTRUCTIONS

1. Connect the S08PB16-EVK to a PC using the included Micro USB cable to power/ OSBDM Micro USB connectors (J15) of S08PB16-EVK board. A green LED (D6) will illuminate, indicating power is on.
2. The S08PB16-EVK comes pre-programmed with a demo to test the onboard RGB LED (D8), potentiometer (R38) and buttons (SW2, SW3). First, turn on the power and the red LED, blue LED and green LED will toggle once. Then, rotate the potentiometer (R38) to the maximum resistance value. The LEDs will turn off. Next, press the two buttons (SW2, SW3) separately to test the buttons. Lastly, the red LED will always toggle.
3. J11 is the BDM header which can be used to debug and program S08PB16 by the debugger P&E Multilink FX or P&E Multilink.
4. J13 must be open when using P&E Multilink FX to supply power and debug/program S08PB16.
5. Explore more out-of-box demos and download software and tools at www.nxp.com/S08PB16-EVK.

SUPPORT

Visit www.nxp.com/support for a list of phone numbers within your region.

WARRANTY

Visit www.nxp.com/warranty for complete warranty information.



Get Started

Download installation software and documentation at www.nxp.com/S08PB16-EVK.

www.nxp.com

NXP and the NXP logo are trademarks of NXP B.V. All other product or service names are the property of their respective owners. ©2019 NXP B.V.

Document Number: S08PB16EVKQSG REV 1
Agile Number: 926-45786 Rev B

X-ON Electronics

Largest Supplier of Electrical and Electronic Components

Click to view similar products for [Development Boards & Kits - S08/S12 category](#):

Click to view products by [NXP manufacturer](#):

Other Similar products are found below :

[S12ZVMC12EVBCAN](#) [DEMO9S08DZ60](#) [DEVKIT-S12G128](#) [DEVKIT-S12VR64](#) [S12ZVMAEVB](#) [TWR-S12G240-KIT](#) [VLG-MC9S12ZVC](#)
[TWR-S12G64-KIT](#) [DEMO9S08JS16](#) [S08SU16-EVK](#) [S12VR64EVB3](#) [S12ZVM32EVB](#) [DEMO9S12XDT512E](#) [TWR-S12GN32-KIT](#)
[DEVKIT-S12VRP](#) [S12VR32EVB](#) [TRK-S12ZVL](#)