

Technical data sheet

Reduction, metric thread

Item no. 2030616



Reduction, with metric internal and external thread.

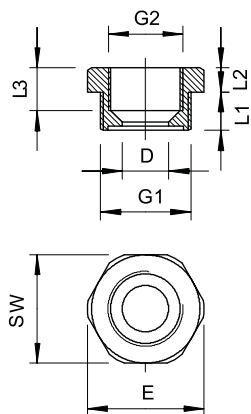


PA Polyamide

Master data

| | |
|--------------------------|-----------------|
| Item no. | 2030616 |
| Type | 107 R M20-12 PA |
| Description 1 | Reduction |
| Dimension | M20-M12 |
| Colour | Light grey |
| RAL number | 7035 |
| Material | Polyamide |
| Material symbol | PA |
| Smallest sales unit (VG) | 100,00 Piece |
| Weight | 0,50 kg/100 pc. |

Technical data



| | |
|------------------------------------|-------------------------------------|
| Dimension E | 26,50 mm |
| Dimension L | 12,00 mm |
| Dimension L1 | 8,00 mm |
| Dimension L2 | 4,00 mm |
| Dimension L3 | 12,00 mm |
| WAF | 24,00 mm |
| explosion-proof | <input type="checkbox"/> |
| Thread type: External thread | Metric |
| Thread type: Internal thread | Metric |
| External thread | M20 |
| Thread dimension, metric, external | 20,00 |
| Internal thread | M12 |
| Thread dimension, metric, internal | 12,00 |
| Thread length | 8,00 mm |
| Halogen-free | <input checked="" type="checkbox"/> |

Technical data sheet

Reduction, metric thread

Item no. 2030616



Technical data

Nickel-plated

X-ON Electronics

Largest Supplier of Electrical and Electronic Components

Click to view similar products for [Conduit Fittings & Accessories](#) category:

Click to view products by [OBO BETTERMANN](#) manufacturer:

Other Similar products are found below :

[790-3006](#) [790-3150](#) [790-3168](#) [RE42](#) [LT20090](#) [LTB15045](#) [LTB20045](#) [LTB3890](#) [CGE195](#) [790-3154](#) [790-3008](#) [790-3014](#) [790-3020](#) [790-3152](#) [790-3156](#) [790-3166](#) [790-3002](#) [790-3162](#) [C2016-P](#) [C2012-P](#) [561-87BG11BLK](#) [1.511.1601.50](#) [55502675](#) [2676](#) [302-TB](#) [655241-000](#) [C17](#) [262-420](#) [TMC165-BR](#) [RBDP-BLA-20D236U](#) [RBDP-BLA-30D346U](#) [SPL25/075/M](#) [CN21](#) [SRN21](#) [3405B](#) [4975](#) [VC12516](#) [RC156-0500](#) [DM0523-1/2A](#) [1035A](#) [DMS0250-1A](#) [DMS0313-1A](#) [1040A](#) [1050A](#) [R1/8A](#) [DMPC0490-1/2A](#) [DMPC0521-1/2A](#) [DMPC0552-1/2A](#) [1070A](#) [R1/2A](#)