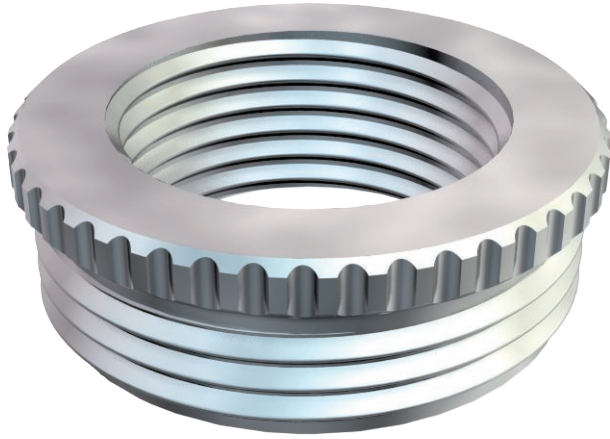


# Technical data sheet

## Reduction, PG thread

Item no. 2089114



Reduction (Part H) to DIN 46320, with Pg thread to DIN 40430, as a transition from a PG thread hole to a smaller cable gland.

\* Prices according to DEL notation.

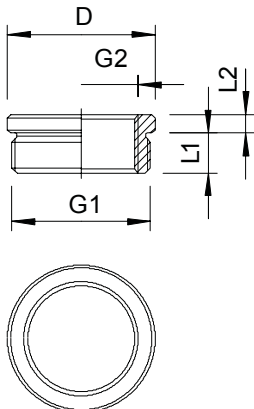
CE Pg

CuZn	Brass
N	Nickel-plated

### Master data

Item no.	2089114
Type	167 R MS PG13-9
Description 1	Reduction
Dimension	PG13,5-PG9
Material	Brass
Material symbol	CuZn
Surface	Nickel-plated
Surface symbol	N
Smallest sales unit (VG)	50,00 Piece
Weight	1,12 kg/100 pc.

### Technical data



Dimension D	22,00 mm
Dimension L1	6,50 mm
Dimension L2	2,50 mm
explosion-proof	<input type="checkbox"/>
Thread type: External thread	PG
Thread type: Internal thread	PG
External thread	Pg 13,5
Thread dimension, PG, external	13,50
Internal thread	Pg 9
Thread dimension, PG, internal	7,00
Thread length	6,50 mm
Nickel-plated	<input checked="" type="checkbox"/>

## X-ON Electronics

Largest Supplier of Electrical and Electronic Components

*Click to view similar products for [Conduit Fittings & Accessories](#) category:*

*Click to view products by [OBO BETTERMANN](#) manufacturer:*

Other Similar products are found below :

[790-3006](#) [790-3150](#) [RE42](#) [LT20090](#) [LTB15045](#) [LTB20045](#) [LTB3890](#) [CGE195](#) [790-3154](#) [790-3008](#) [790-3014](#) [790-3020](#) [790-3152](#) [790-3156](#) [790-3166](#) [790-3002](#) [790-3162](#) [C2016-P](#) [C2012-P](#) [561-87BG11BLK](#) [1.511.1601.50](#) [55502675](#) [2676](#) [302-TB](#) [655241-000](#) [C17](#) [262-420](#) [TMC165-BR](#) [RBDP-BLA-20D236U](#) [RBDP-BLA-30D346U](#) [SPL25/075/M](#) [CN21](#) [SRN21](#) [3405B](#) [4975](#) [VC12516](#) [RC156-0500](#) [DM0523-1/2A](#) [1035A](#) [DMS0250-1A](#) [DMS0313-1A](#) [1040A](#) [1050A](#) [R1/8A](#) [DMPC0490-1/2A](#) [DMPC0521-1/2A](#) [DMPC0552-1/2A](#) [1070A](#) [R1/2A](#) [E1-7/8B](#)