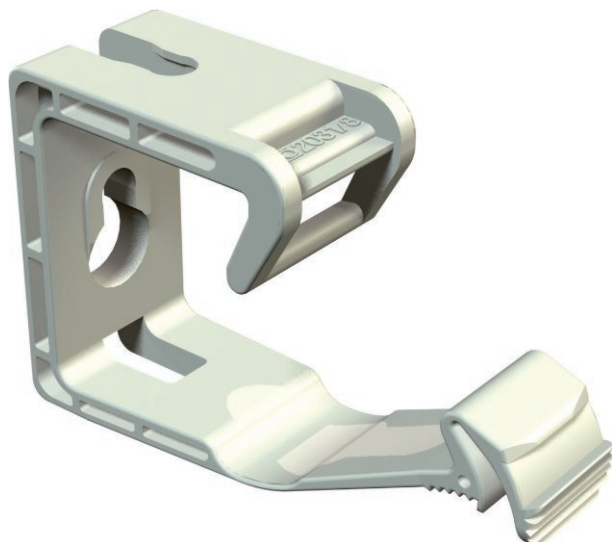


Technical data sheet

GRIP 10

Art.-Nr. 2205398



The new GRIP plastic cable ties are suitable for mounting installation cables. Besides the known advantages of cable ties, they have special features which considerably simplify mounting: In addition, the Grip cable ties are available in a hardly flammable version. The Grip cable ties will support you in a proper and safe installation of installation cables, even under difficult circumstances.



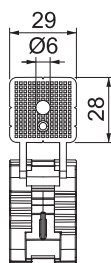
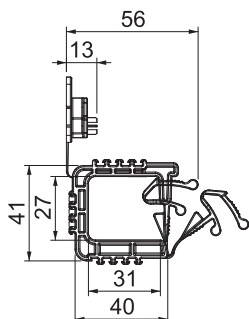
PP Polypropylene

Product additional text 1 Capacity:
2031/ 10 max. 10 cables NYM 3 x 1.5 mm²

Master data

Item No.	2205398
Type	2031 10
Description 1	Grip collecting clamp
Dimension	10x NYM3x1,5
Colour	Light grey
RAL number	7.035,00
Material	Polypropylene
Material symbol	PP
Smallest sales unit	50,00 pcs
Weight	0,77 kg/100 pcs.

Technical specifications



No. of conductors NYM 3 x 1.5	10,00
Flame-resistant version	<input checked="" type="checkbox"/>
Breaking load	- 0,32 kN
Suitable for function maintenance	<input checked="" type="checkbox"/>
Halogen-free	<input checked="" type="checkbox"/>
With anchor	<input checked="" type="checkbox"/>

X-ON Electronics

Largest Supplier of Electrical and Electronic Components

Click to view similar products for [Other Tools](#) category:

Click to view products by [OBO BETTERMANN](#) manufacturer:

Other Similar products are found below :

[CR-05FL7--150R](#) [CR-05FL7--698K](#) [899-2-KT46](#) [899-5-KT46](#) [CR-0AFL4--332K](#) [CR-12FP4--260R](#) [CRCW04021100FRT7](#)
[CRCW04021961FRT7](#) [5800-0090](#) [CRCW04024021FRT7](#) [CRCW040254R9FRT7](#) [CRCW0603102JRT5](#) [59065-5](#) [00-8273-RDPP](#) [00-8729-](#)
[WHPP](#) [593033](#) [593058](#) [593072](#) [593564100](#) [593575](#) [593591](#) [593593](#) [011349-000](#) [LTLA506SBLAMNBL](#) [CRCW08052740FRT1](#) [LUC-](#)
[012S070DSM](#) [LUC-018S070DSP](#) [599-2021-3-NME](#) [599-JJ-2021-03](#) [00-5080-YWPP](#) [5E4750/01-20R0-T/R](#) [LW1A-L1-GL](#) [LW1A-P1-GD](#)
[LW1L-A1C10V-GL](#) [LW1L-M1C70-A](#) [0202-0173](#) [00-9089-RDPP](#) [00-9300-RDPP](#) [CRCW2010331JR02](#) [01-1003W-8/32-10](#) [601-GP-08-](#)
[KT39](#) [601-JJ-06](#) [601-SPB](#) [601YSY](#) [602-JJ-03](#) [602SPB](#) [602Z](#) [603-JJ-07-FP](#) [603-JJY-04](#) [604J](#)