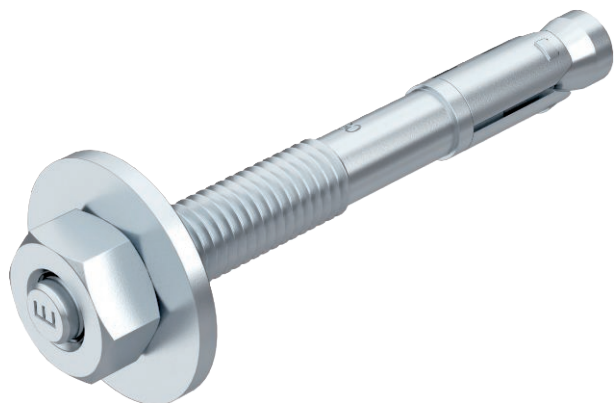


# Technical data sheet

## Bolt tie BZ-U

Item no. 3498320



Bolt tie BZ for the anchoring of medium-duty to heavy-duty loads, both in cracked and non-cracked concrete. It combines high approved loads with small edge distances and axial spacings.



<b>St</b>	Steel
<b>G</b>	Electrogalvanised

Additional product text, instruction	European Technical Approval ETA-99/0010, including characteristic values under fire exposure to fire resistance R 120. Proof of suitability in the case of seismic impacts, categories C1 and C2. Shock approval by the Federal Office for Civil Protection in Bern, Switzerland.
--------------------------------------	---

### Master data

Item no.	3498320
Type	BZ-U 8-10-21/75
Description 1	Wedge anchor BZ-U
Dimension	M8x75mm
Material	Steel
Material symbol	St
Surface	Electrogalvanised
Surface to DIN	DIN EN 12329
Surface symbol	G
Smallest sales unit (VG)	50,00 Piece
Weight	3,46 kg/100 pc.

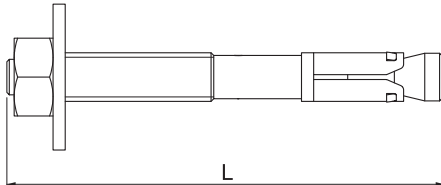
# Technical data sheet

## Bolt tie BZ-U

Item no. 3498320



### Technical data



Length	75,00 mm
Dimension L	75,00 mm
Version	For knocking in
Anchor/nail/bolt version	Spreading anchor
Drill hole depth	60,00 mm
Drill hole diameter	8,00 mm
Clamping range	10-21 mm
Clamping strength	10,00 mm
Thread	M8
Thread type	Metric
Thread metric	8,00
Permitted load range, tension zone	2,40 kN
Approvals available	<input checked="" type="checkbox"/>

## X-ON Electronics

Largest Supplier of Electrical and Electronic Components

*Click to view similar products for [OBO BETTERMANN](#) manufacturer:*

Other Similar products are found below :

[1015 10 G](#) [1015 11 G](#) [1015 12 G](#) [1015 13 G](#) [1015 14 G](#) [1015 15 G](#) [1015 16 G](#) [1015 17 G](#) [1015 20 G](#) [1015 28 G](#) [1015 5 G](#) [1015 6 G](#) [1015 7 G](#) [1015 8 G](#) [1015 9 G](#) [1015 D 10 G](#) [1015 D 12 G](#) [1015 D 5 G](#) [1015 D 6 G](#) [1015 D 7 G](#) [1015 D 8 G](#) [1015 D 9 G](#) [107 F M12 PE](#) [107 F M16 PE](#) [107 F M20 PE](#) [107 F M25 PE](#) [107 F M32 PE](#) [107 F M40 PE](#) [107 F M50 PE](#) [107 F M63 PE](#) [107 F PG16 PE](#) [107 F PG21 PE](#) [107 F PG36 PE](#) [107 F PG7 PE](#) [107 F PG9 PE](#) [107 R M20-16 PA](#) [107 R M25-20 PA](#) [107 R M32-25 PA](#) [107 R M40-25 PA](#) [107VS VM 12 PA](#) [107VS VM 16 PA](#) [107VS VM 20 PA](#) [108 M12 PS](#) [108 M16 PS](#) [108 M20 PS](#) [108 M25 PS](#) [108 M32 PS](#) [108 PG11](#) [108 PG13.5](#) [108 PG16](#)