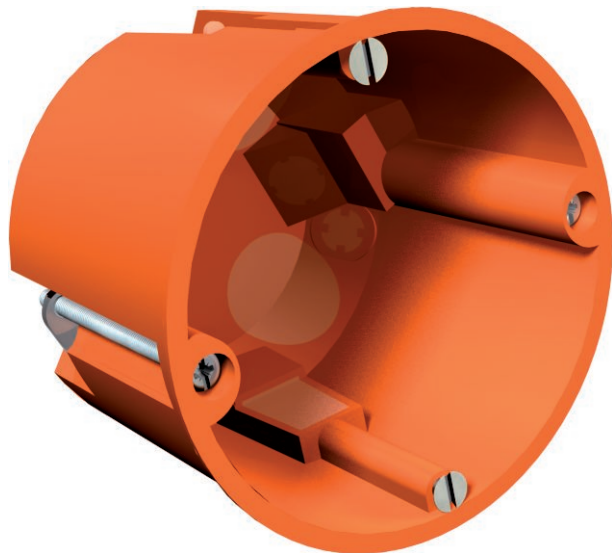


# Technical data sheet

## Cavity wall accessory/connection socket, wind-proof

Art.-Nr. 2003619



Cavity wall device/connection socket, wind-tight version through soft entry membrane. Dimensions to DIN 49073-1, for plate thickness 7–35 mm. Standard combination spacing 71 mm, option for continuous wiring using connection supports for combinations between device sockets and device connection sockets,

8, device sockets can also be used as connection sockets to VDE 0606-1 with double screw fastening and screw-on cover, protection rating IP40.



**PP** Polypropylene

Additional product text 2 According to IEC 61670-1, IEC 61670-22 and DIN 49073-1.

### Master data

Item no.	2003619
Type	HV 60 MW
Description 1	Device/connection plug
Description 2	cavity wall 2K
Dimension	Ø68mm, H61mm
Colour	Orange
Material	Polypropylene
Material symbol	PP
Smallest sales unit	25,00 Piece
Weight	2,60 kg/100 pc.

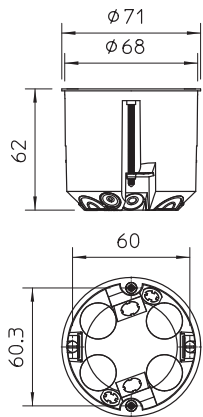
# Technical data sheet

## Cavity wall accessory/connection socket, wind-proof

Art.-Nr. 2003619



### Technical data



Height	61,00 mm
Ø	68 max.
Diameter	68,00 mm
Closable	<input type="checkbox"/>
No. of entries	8,00
Entries	8
Number of switch boxes	1,00
Type of entry	wind-proof insertion membranes for NYM cables, data cables and pipes Ø 20 mm.
Type of housing penetration	Sealing membrane
Version for	Single
Shape	Device connection socket/box
Device fixing	Screw
Equipment	Without
Cover	Without
Cover fastening	Not applicable
Entry from rear	<input checked="" type="checkbox"/>
Milling hole diameter	68,00 mm
Flame resistant	Flame resistant to VDE 0471/DIN 695 Part 2-1, test temperature 850 °C
Shape	Round
For pipe diameter	20 mm
Function maintenance (ETIM)	Without
Floor height	61 mm
Suitable for board thickness	7,00 - 35,00 mm
Accessory screw clearance	60,00 mm
Halogen-free	<input checked="" type="checkbox"/>
Max. conductor cross-section	2,50 mm <sup>2</sup>
With screening	<input type="checkbox"/>
With nail strap	<input type="checkbox"/>
With bolts	<input checked="" type="checkbox"/>
Mounting type	Cavity wall
Nominal cross section	1,50 - 2,50 mm <sup>2</sup>
Nominal voltage	400,00 V
Sealable	<input type="checkbox"/>
Protection rating	IP40
Support	Without
Wind-tight	<input checked="" type="checkbox"/>

## X-ON Electronics

Largest Supplier of Electrical and Electronic Components

*Click to view similar products for [Electrical Enclosures](#) category:*

*Click to view products by [OBO BETTERMANN](#) manufacturer:*

Other Similar products are found below :

[1201110001](#) [120-401](#) [120-905](#) [120-909](#) [120-403](#) [130-004](#) [MR-25L+](#) [30-8739](#) [PIP-11774SCREW](#) [30-9715](#) [30-9777-BU](#) [110-902](#) [110-901](#)  
[A16N12BLP](#) [110-406](#) [110-401](#) [110-404](#) [120-405](#) [34861601](#) [106-009](#) [106-505](#) [105-405](#) [111-005](#) [127-909](#) [106-502](#) [130-475](#) [130-503](#) [127-](#)  
[455](#) [9511150](#) [9511017](#) [9820011](#) [NSYTDB5PL](#) [137-455](#) [130-001](#) [105-904](#) [120-404](#) [137-005](#) [130-505](#) [127-406](#) [AB 1,5.0](#) [AB2.0](#) [ABM.0](#)  
[73345601](#) [F-MP](#) [H-MP](#) [M-MP](#) [PAT 12040](#) [2461000](#) [9121230](#) [79541301](#)