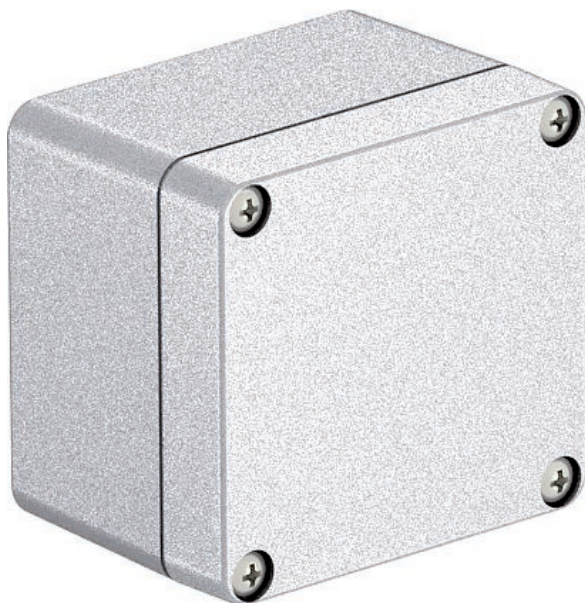


Technical data sheet

Aluminium empty housing Mx06-Mx15, paintable

Art.-Nr. 2011381



Robust aluminium empty housing for mechanical engineering and automation technology. The OBO Mx series' excellent features make it most suitable for extreme demands in all different areas. It is therefore also best suited for applications in industry, ports and shipbuilding, as well as in the agricultural sector.

The series' properties protect the electrical installation when under extreme strain. The products withstand both great cold and heat as well as impacts or kicks on roads, railways or in tunnels. With a protection class of up to IP66, they are optimally protected against the intrusion of water. The aluminium is of course UV-resistant and halogen-free. The cover seal is made from polyurethane.

The aluminium housings are sandblasted and are delivered with a cover including stainless steel screws, a seal and 2 or 4 earthing screws.

The surface provides a good contact when using metal fittings.



AIG Die-cast aluminium
Cr3 Chrome III coating

Additional product text 1 | Temperature: -40°C to +125°C

Master data

Item no.	2011381
Type	Mx 080705 CR3
Description 1	Aluminium empty housing
Description 2	surface can be coated
Dimension	80x75x57
Material	Die-cast aluminium
Material symbol	AIG
Surface	Chrome III coating
Surface symbol	Cr3
Smallest sales unit	1,00 Piece
Weight	36,40 kg/100 pc.

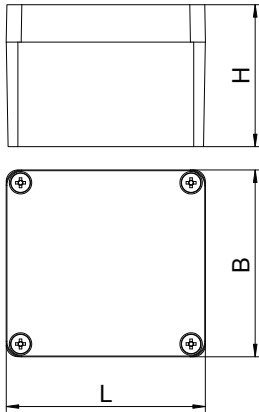
Technical data sheet

Aluminium empty housing Mx06-Mx15, paintable

Art.-Nr. 2011381



Technical data



Length	80,00 mm
Width	75,00 mm
Height	57,00 mm
Clear internal dimensions	71x65,5x52,5 mm
Dimension	80x75x57 mm
Dimension LxWxH	80x75x57 mm
Extension option	<input checked="" type="checkbox"/>
Version	Closed with 4 stainless steel lid screws
Lid version	Closed
Cover fastening	Screwed
Shape	Rectangular
Suitable for outdoor use	<input checked="" type="checkbox"/>
Suitable for lightning protection with lid	<input type="checkbox"/>
Yes	Yes
With cover	<input checked="" type="checkbox"/>
With mounting plate	<input type="checkbox"/>
Installation type	Wall/ceiling mounting
Protection rating	IP66
Protection rating	IP 66
max. permitted ambient temperature	-40,00 - 125,00 °C
Weatherproof	<input checked="" type="checkbox"/>

X-ON Electronics

Largest Supplier of Electrical and Electronic Components

Click to view similar products for [Enclosures, Boxes & Cases](#) *category:*

Click to view products by [OBO BETTERMANN](#) *manufacturer:*

Other Similar products are found below :

[585-R-WH-PK](#) [M-10-PLATED](#) [60221-01](#) [60566-01-000](#) [HPL-9VB BATT DOOR](#) [M18-PLTD](#) [M-21-PLATED](#) [63310-01-000](#) [6711GSKT](#)
[71884-29-028](#) [LH45-100 Black](#) [72868-510-000](#) [CNS-0000 Black](#) [72883-510-000](#) [CNS-0101 Black](#) [72906-510-000](#) [CNS-0407 Black](#) [73092-](#)
[510-000](#) [CNM-0101 Black](#) [73105-510-000](#) [CNL-0101 Black](#) [73108-510-000](#) [CNL-0303 Black](#) [73395-510-039](#) [CNS-0006 Bone](#) [74016-510-000](#)
[CNL-0006 Black](#) [74257-510-000](#) [CNL-0004](#) [MDC-1183-PLAIN-ALUM](#) [MDC-1183-PTD](#) [MDC-13104-PTD](#) [MDC-321-PTD](#) [MDC-973-PTD](#)
[76](#) [77153-01-028](#) [FLX6030](#) [83535-01-508](#) [90026-501-000](#) [PS36-200](#) [116-508](#) [120-407](#) [120-910](#) [127-908](#) [130-008](#) [1301170079](#)
[1322GSKTEP](#) [1325GSKT3](#) [138-PLAIN](#) [1434-1210](#) [EAS-500 \(BLACK ANO\)](#) [1804RP-RB-PK](#) [190-005](#) [2202307](#) [KAB3321 BLACK](#)
[KAB3421](#) [2697466](#) [S52213](#) [2901123](#) [2901699](#) [A0645271](#) [A20P20](#)