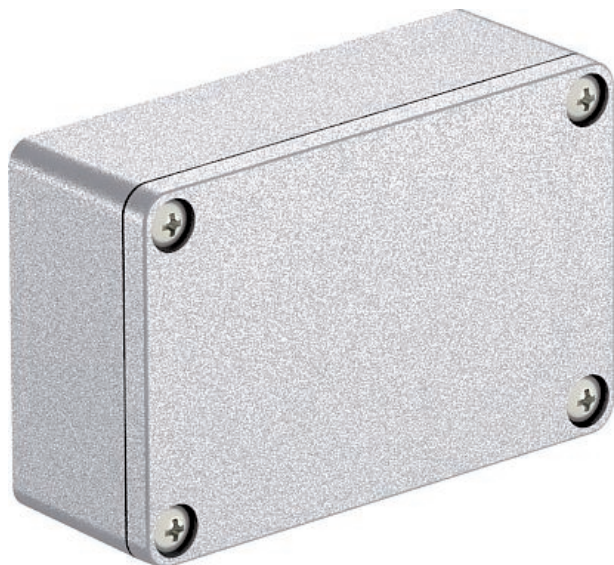


# Technical data sheet

## Aluminium empty housing Mx06-Mx15, paintable

Art.-Nr. 2011384



Robust aluminium empty housing for mechanical engineering and automation technology. The OBO Mx series' excellent features make it most suitable for extreme demands in all different areas. It is therefore also best suited for applications in industry, ports and shipbuilding, as well as in the agricultural sector.

The series' properties protect the electrical installation when under extreme strain. The products withstand both great cold and heat as well as impacts or kicks on roads, railways or in tunnels. With a protection class of up to IP66, they are optimally protected against the intrusion of water. The aluminium is of course UV-resistant and halogen-free. The cover seal is made from polyurethane.

The aluminium housings are sandblasted and are delivered with a cover including stainless steel screws, a seal and 2 or 4 earthing screws.

The surface provides a good contact when using metal fittings.



**AIG** Die-cast aluminium  
**Cr3** Chrome III coating

Additional product text 1 | Temperature: -40°C to +125°C

### Master data

Item no.	2011384
Type	Mx 090603 CR3
Description 1	Aluminium empty housing
Description 2	surface can be coated
Dimension	98x64x34
Material	Die-cast aluminium
Material symbol	AIG
Surface	Chrome III coating
Surface symbol	Cr3
Smallest sales unit	1,00 Piece
Weight	25,00 kg/100 pc.

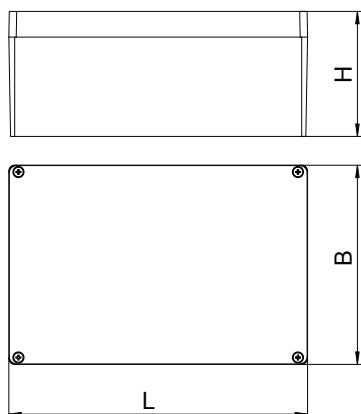
# Technical data sheet

## Aluminium empty housing Mx06-Mx15, paintable

Art.-Nr. 2011384



### Technical data



Length	98,00 mm
Width	64,00 mm
Height	34,00 mm
Clear internal dimensions	91x54x29 mm
Dimension	98x64x34 mm
Dimension LxWxH	98x64x34 mm
Extension option	<input checked="" type="checkbox"/>
Version	Closed with 4 stainless steel lid screws
Lid version	Closed
Cover fastening	Screwed
Shape	Rectangular
Suitable for outdoor use	<input checked="" type="checkbox"/>
Suitable for lightning protection with lid	<input type="checkbox"/>
Yes	Yes
With cover	<input checked="" type="checkbox"/>
With mounting plate	<input type="checkbox"/>
Installation type	Wall/ceiling mounting
Protection rating	IP64
Protection rating	IP 66
max. permitted ambient temperature	-40,00 - 125,00 °C
Weatherproof	<input checked="" type="checkbox"/>

## X-ON Electronics

Largest Supplier of Electrical and Electronic Components

*Click to view similar products for* [Enclosures, Boxes & Cases](#) *category:*

*Click to view products by* [OBO BETTERMANN](#) *manufacturer:*

Other Similar products are found below :

[585-R-WH-PK](#) [M-10-PLATED](#) [60221-01](#) [60566-01-000](#) [HPL-9VB BATT DOOR](#) [M18-PLTD](#) [M-21-PLATED](#) [63310-01-000](#) [6711GSKT](#)  
[71884-29-028](#) [LH45-100 Black](#) [72868-510-000](#) [CNS-0000 Black](#) [72883-510-000](#) [CNS-0101 Black](#) [72906-510-000](#) [CNS-0407 Black](#) [73092-](#)  
[510-000](#) [CNM-0101 Black](#) [73105-510-000](#) [CNL-0101 Black](#) [73108-510-000](#) [CNL-0303 Black](#) [73395-510-039](#) [CNS-0006 Bone](#) [74016-510-000](#)  
[CNL-0006 Black](#) [74257-510-000](#) [CNL-0004](#) [MDC-1183-PLAIN-ALUM](#) [MDC-1183-PTD](#) [MDC-13104-PTD](#) [MDC-321-PTD](#) [MDC-973-PTD](#)  
[76](#) [77153-01-028](#) [FLX6030](#) [83535-01-508](#) [90026-501-000](#) [PS36-200](#) [116-508](#) [120-407](#) [120-910](#) [127-908](#) [130-008](#) [1301170079](#)  
[1322GSKTEP](#) [1325GSKT3](#) [138-PLAIN](#) [1434-1210](#) [EAS-500 \(BLACK ANO\)](#) [1804RP-RB-PK](#) [190-005](#) [2202307](#) [KAB3321 BLACK](#)  
[KAB3421](#) [2697466](#) [S52213](#) [2901123](#) [2901699](#) [A0645271](#) [A20P20](#)