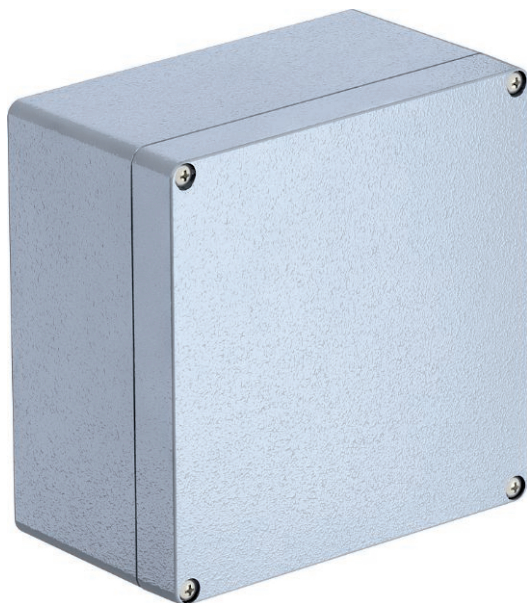


Technical data sheet

Aluminium empty housing Mx06-Mx15, powder-coated

Art.-Nr. 2011320



Robust aluminium empty housing for mechanical engineering and automation technology. The OBO Mx series' excellent mechanical and thermal features make it most suitable for extreme demands in many different areas. It is therefore also best suited for applications in industry, ports and shipbuilding, as well as in the agricultural sector.

The products protect the electrical installation against high-grade strains. They withstand both extreme cold and heat as well as vandalism and impact on roads, railways or in tunnels. With an IP66 protection class, they are optimally protected against the intrusion of dust and water. The aluminium housings are plastic coated (RAL 7035) and are delivered with a cover including stainless steel screws, a seal and two or four earthing screws.



AIG Die-cast aluminium
P Powder-coated

Additional product text 1 | Temperature: -40°C to +125°C

Master data

Item no.	2011320
Type	Mx 161609 SGR
Description 1	Aluminium empty housing
Dimension	160x160x91
Colour	Silver grey
RAL number	7001
Material	Die-cast aluminium
Material symbol	AIG
Surface	Powder-coated
Surface symbol	P
Smallest sales unit	1,00 Piece
Weight	170,00 kg/100 pc.

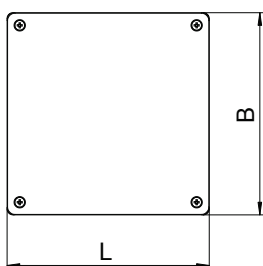
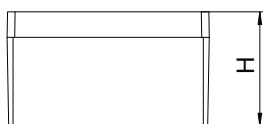
Technical data sheet

Aluminium empty housing Mx06-Mx15, powder-coated

Art.-Nr. 2011320



Technical data



Length	160,00 mm
Width	160,00 mm
Height	90,00 mm
Clear internal dimensions	149x149x84.5 mm
Dimension	160x160x91 mm
Dimension LxWxH	160x160x90 mm
Extension option	<input checked="" type="checkbox"/>
Version	Closed with 4 stainless steel lid screws
Lid version	Closed
Cover fastening	Screwed
Shape	Square
Suitable for outdoor use	<input checked="" type="checkbox"/>
Suitable for lightning protection with lid	<input type="checkbox"/>
With cover	<input checked="" type="checkbox"/>
With mounting plate	<input type="checkbox"/>
Installation type	Wall/ceiling mounting
Protection rating	IP66
Protection rating	IP 66
max. permitted ambient temperature	-40,00 - 125,00 °C
Weatherproof	<input checked="" type="checkbox"/>

X-ON Electronics

Largest Supplier of Electrical and Electronic Components

Click to view similar products for [Enclosures, Boxes & Cases](#) *category:*

Click to view products by [OBO BETTERMANN](#) *manufacturer:*

Other Similar products are found below :

[585-R-WH-PK](#) [M-10-PLATED](#) [60221-01](#) [60566-01-000](#) [HPL-9VB BATT DOOR](#) [M18-PLTD](#) [M-21-PLATED](#) [63310-01-000](#) [6711GSKT](#)
[71884-29-028](#) [LH45-100 Black](#) [72868-510-000](#) [CNS-0000 Black](#) [72883-510-000](#) [CNS-0101 Black](#) [72906-510-000](#) [CNS-0407 Black](#) [73092-](#)
[510-000](#) [CNM-0101 Black](#) [73105-510-000](#) [CNL-0101 Black](#) [73108-510-000](#) [CNL-0303 Black](#) [73395-510-039](#) [CNS-0006 Bone](#) [74016-510-000](#)
[CNL-0006 Black](#) [74257-510-000](#) [CNL-0004](#) [MDC-1183-PLAIN-ALUM](#) [MDC-1183-PTD](#) [MDC-13104-PTD](#) [MDC-321-PTD](#) [MDC-973-PTD](#)
[76](#) [77153-01-028](#) [FLX6030](#) [83535-01-508](#) [90026-501-000](#) [PS36-200](#) [116-508](#) [120-407](#) [120-910](#) [127-908](#) [130-008](#) [1301170079](#)
[1322GSKTEP](#) [1325GSKT3](#) [138-PLAIN](#) [1434-1210](#) [EAS-500 \(BLACK ANO\)](#) [1804RP-RB-PK](#) [190-005](#) [2202307](#) [KAB3321 BLACK](#)
[KAB3421](#) [2697466](#) [S52213](#) [2901123](#) [2901699](#) [A0645271](#) [A20P20](#)