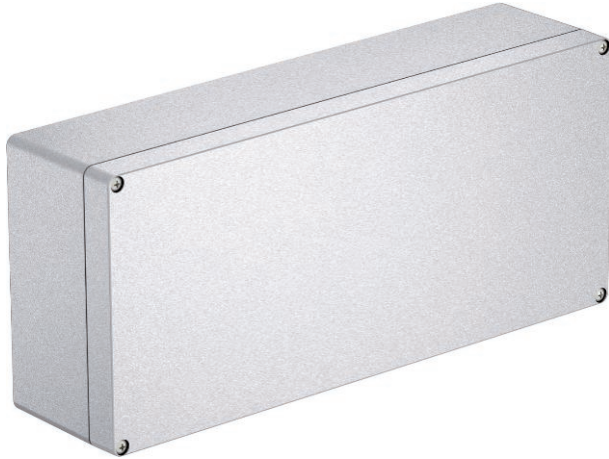


Technical data sheet

Aluminium empty housing Mx06-Mx15, paintable

Art.-Nr. 2011398



Robust aluminium empty housing for mechanical engineering and automation technology. The OBO Mx series' excellent features make it most suitable for extreme demands in all different areas. It is therefore also best suited for applications in industry, ports and shipbuilding, as well as in the agricultural sector.

The series' properties protect the electrical installation when under extreme strain. The products withstand both great cold and heat as well as impacts or kicks on roads, railways or in tunnels. With a protection class of up to IP66, they are optimally protected against the intrusion of water. The aluminium is of course UV-resistant and halogen-free. The cover seal is made from polyurethane.

The aluminium housings are sandblasted and are delivered with a cover including stainless steel screws, a seal and 2 or 4 earthing screws.

The surface provides a good contact when using metal fittings.



AIG Die-cast aluminium
Cr3 Chrome III coating

Additional product text 1 | Temperature: -40°C to +125°C

Master data

Item no.	2011398
Type	Mx 361609 CR3
Description 1	Aluminium empty housing
Description 2	surface can be coated
Dimension	360x160x91
Material	Die-cast aluminium
Material symbol	AIG
Surface	Chrome III coating
Surface symbol	Cr3
Smallest sales unit	1,00 Piece
Weight	320,00 kg/100 pc.

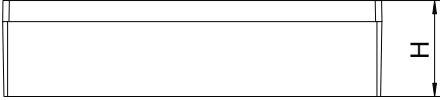
Technical data sheet


Aluminium empty housing Mx06-Mx15, paintable

Art.-Nr. 2011398



Technical data

	Length	360,00 mm
	Width	160,00 mm
	Height	91,00 mm
	Clear internal dimensions	317,5x149x82 mm
	Dimension	360x160x90 mm
	Dimension LxWxH	360x160x91 mm
	Extension option	<input checked="" type="checkbox"/>
	Version	Closed with 4 stainless steel lid screws
	Lid version	Closed
	Cover fastening	Screwed
	Shape	Rectangular
	Suitable for outdoor use	<input checked="" type="checkbox"/>
	Suitable for lightning protection with lid	<input type="checkbox"/>
	With lid	Yes
	With cover	<input checked="" type="checkbox"/>
	With mounting plate	<input type="checkbox"/>
	Installation type	Wall/ceiling mounting
	Protection rating	IP66
	Protection rating	IP 66
	max. permitted ambient temperature	-40,00 - 125,00 °C
	Weatherproof	<input checked="" type="checkbox"/>



X-ON Electronics

Largest Supplier of Electrical and Electronic Components

Click to view similar products for [Enclosures, Boxes & Cases](#) category:

Click to view products by [OBO BETTERMANN](#) manufacturer:

Other Similar products are found below :

[585-R-WH-PK](#) [M-10-PLATED](#) [60221-01](#) [60566-01-000](#) [HPL-9VB BATT DOOR](#) [M18-PLTD](#) [M-21-PLATED](#) [63310-01-000](#) [6711GSKT](#)
[71884-29-028](#) [LH45-100 Black](#) [72868-510-000](#) [CNS-0000 Black](#) [72883-510-000](#) [CNS-0101 Black](#) [72906-510-000](#) [CNS-0407 Black](#) [73092-](#)
[510-000](#) [CNM-0101 Black](#) [73105-510-000](#) [CNL-0101 Black](#) [73108-510-000](#) [CNL-0303 Black](#) [73395-510-039](#) [CNS-0006 Bone](#) [74016-510-000](#)
[CNL-0006 Black](#) [74257-510-000](#) [CNL-0004](#) [MDC-1183-PLAIN-ALUM](#) [MDC-1183-PTD](#) [MDC-13104-PTD](#) [MDC-321-PTD](#) [MDC-973-PTD](#)
[76](#) [77153-01-028](#) [FLX6030](#) [83535-01-508](#) [90026-501-000](#) [PS36-200](#) [116-508](#) [120-407](#) [120-910](#) [127-908](#) [130-008](#) [1301170079](#)
[1322GSKTEP](#) [1325GSKT3](#) [138-PLAIN](#) [1434-1210](#) [EAS-500 \(BLACK ANO\)](#) [1804RP-RB-PK](#) [190-005](#) [2202307](#) [KAB3321 BLACK](#)
[KAB3421](#) [2697466](#) [S52213](#) [2901123](#) [2901699](#) [A0645271](#) [A20P20](#)