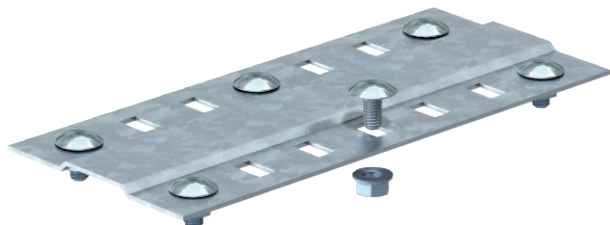


# Technical data sheet

## Joint plate

Item no. 7070217



Wide joint plate for use in all cable trays and wide span cable trays.



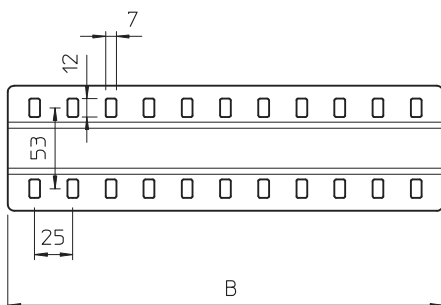
St	Steel
FS	Strip galvanised

Additional product text, instruction	Including appropriate fastening material.
Product text, scope of delivery	For function maintenance at a width of 100 mm, the quantity of supplied M6 truss-head bolts should be increased to four, whilst for widths 200 and 300 mm, it should be increased to six.

### Master data

Item no.	7070217
Type	SSLB 300 FS
Description 1	Joint plate
Description 2	wide, with 4 fastenings
Dimension	B300mm
Material	Steel
Material symbol	St
Surface	Strip galvanised
Surface to DIN	DIN EN 10346
Surface symbol	FS
Smallest sales unit (VG)	20,00 Piece
Weight	29,20 kg/100 pc.

### Technical data



Length	300,00 mm
Width	285,00 mm
Width	12,00 in
Height	4,00 mm
Side height	35,00 mm
Dimension B	300,00 mm
Version	Joint plate
Quantity of bolts	4,00 pc.
Plate thickness	1,50 mm
Suitable for cable tray	<input checked="" type="checkbox"/>
Suitable for mesh cable tray	<input type="checkbox"/>
Suitable for cable ladder	<input type="checkbox"/>
Suitable for maintaining electrical function	<input checked="" type="checkbox"/>
Adjustable connector, horizontal	<input type="checkbox"/>
Adjustable connector, vertical	<input type="checkbox"/>
Rustproof steel, pickled	<input type="checkbox"/>

# Technical data sheet

Joint plate

Item no. 7070217



## Technical data

Connection type	Screw connector
Wide-span version	<input checked="" type="checkbox"/>

## **X-ON Electronics**

Largest Supplier of Electrical and Electronic Components

*Click to view similar products for [OBO BETTERMANN](#) manufacturer:*

Other Similar products are found below :

[1015 10 G](#) [1015 11 G](#) [1015 12 G](#) [1015 13 G](#) [1015 14 G](#) [1015 15 G](#) [1015 16 G](#) [1015 17 G](#) [1015 20 G](#) [1015 28 G](#) [1015 5 G](#) [1015 6 G](#) [1015 7 G](#) [1015 8 G](#) [1015 9 G](#) [1015 D 10 G](#) [1015 D 12 G](#) [1015 D 5 G](#) [1015 D 6 G](#) [1015 D 7 G](#) [1015 D 8 G](#) [1015 D 9 G](#) [107 F M12 PE](#) [107 F M16 PE](#) [107 F M20 PE](#) [107 F M25 PE](#) [107 F M32 PE](#) [107 F M40 PE](#) [107 F M50 PE](#) [107 F M63 PE](#) [107 F PG16 PE](#) [107 F PG21 PE](#) [107 F PG36 PE](#) [107 F PG7 PE](#) [107 F PG9 PE](#) [107 R M20-16 PA](#) [107 R M25-20 PA](#) [107 R M32-25 PA](#) [107 R M40-25 PA](#) [107VS VM 12 PA](#) [107VS VM 16 PA](#) [107VS VM 20 PA](#) [108 M12 PS](#) [108 M16 PS](#) [108 M20 PS](#) [108 M25 PS](#) [108 M32 PS](#) [108 PG11](#) [108 PG13.5](#) [108 PG16](#)