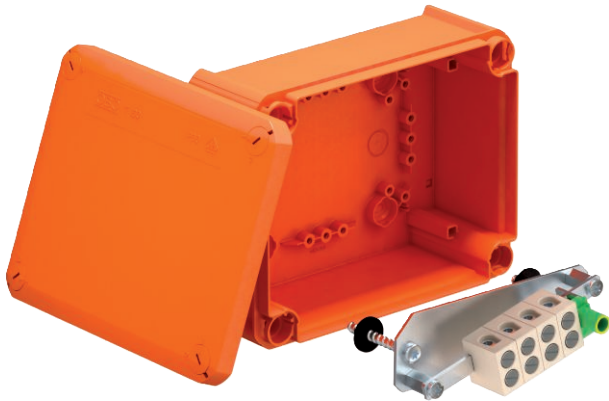


Technical data sheet

FireBox T160E with internal fastening



Item no. 7205528



E30 **E90** **IP 66** **E60**

PP Polypropylene

Halogen-free junction box, approved for the maintenance of electrical functionality according to DIN 4102 Part 12. Maintenance of electrical functionality classes E30 to E90 including pre-mounted connection unit made of high temperature-resistant special ceramic and labelled protective conductor terminal. Supplied with fire protection screw ties for anchorless fastening.

Nominal cross-section of power cable: Max. 16 mm². Maximum of two 4–6 mm² rigid copper cables per terminal.

High protection rating IP65, impact resistance class IK07.

Details on the cable types and manufacturers can be found in the general construction test certificate of the material testing institute MPA NRW, Erwitte.

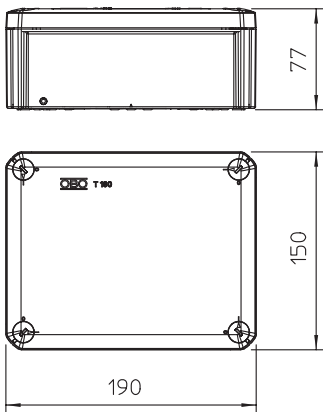
Number of terminals including protective conductor terminal
Internal clearance: m176x135x67m

Additional product text, instruction	Number of terminals including protective conductor terminal Internal clearance: 176x135x67 mm
--------------------------------------	--

Master data

Item no.	7205528
Type	T 160 E 16-5
Description 1	Junction box
Description 2	for function maintenance
Dimension	190x150x77
Colour	Pastel orange
RAL number	2003
Material	Polypropylene
Material symbol	PP
Smallest sales unit (VG)	1,00 Piece
Weight	53,80 kg/100 pc.

Technical data



Length	190,00 mm
Width	150,00 mm
Height	77,00 mm
Clear internal dimensions	176x135x67 mm
Expandable	<input type="checkbox"/>
No. of entries	8,00
Number of terminals	5,00
Type of housing penetration	Pre-marking
Measured insulation voltage Vi	690,00 V
Equipment	Terminal
Cover	Not transparent
Cover fastening	Screwed
Entry from rear	<input type="checkbox"/>
Shape	Square
Function maintenance (ETIM)	E 90
Halogen-free	<input checked="" type="checkbox"/>

Technical data sheet

FireBox T160E with internal fastening

Item no. 7205528



Technical data

With screening	<input type="checkbox"/>
with lid	Yes
With cover	<input checked="" type="checkbox"/>
Installation type	Surface-mounted
Nominal cross section	16,00 mm ²
Nominal voltage	660,00 V
Protection rating	IP65
Sealable	<input type="checkbox"/>
Impact-resistant	<input type="checkbox"/>
Weatherproof	<input type="checkbox"/>

X-ON Electronics

Largest Supplier of Electrical and Electronic Components

Click to view similar products for [Electrical Enclosures](#) category:

Click to view products by [OBO BETTERMANN](#) manufacturer:

Other Similar products are found below :

[1201110001](#) [120-401](#) [120-905](#) [120-909](#) [120-403](#) [130-004](#) [MR-25L+](#) [30-8739](#) [PIP-11774SCREW](#) [30-9715](#) [30-9777-BU](#) [110-902](#) [110-901](#)
[A16N12BLP](#) [110-406](#) [110-401](#) [110-404](#) [120-405](#) [34861601](#) [106-009](#) [106-505](#) [105-405](#) [111-005](#) [127-909](#) [106-502](#) [130-475](#) [130-503](#) [127-](#)
[455](#) [9511150](#) [9511017](#) [9820011](#) [NSYTDB5PL](#) [137-455](#) [130-001](#) [105-904](#) [120-404](#) [137-005](#) [130-505](#) [127-406](#) [AB 1,5.0](#) [AB2.0](#) [ABM.0](#)
[73345601](#) [F-MP](#) [H-MP](#) [M-MP](#) [PAT 12040](#) [2461000](#) [9121230](#) [79541301](#)