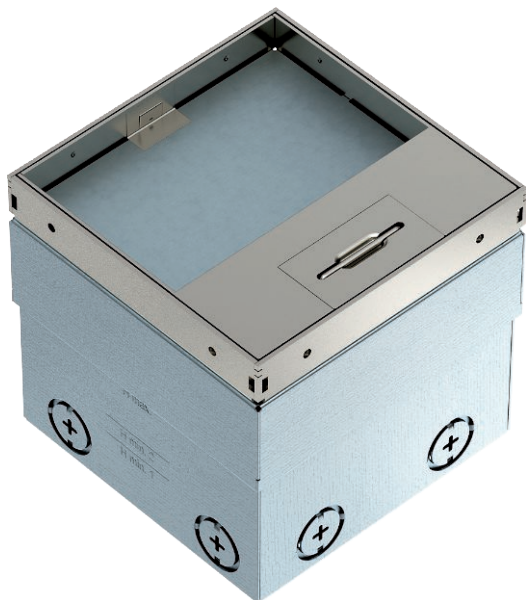


Technical data sheet

UDHOME2 floor socket, with floor covering recess,
double NF, stainless steel
Item no. 7368330



Square floor socket for use in dry-care cavity and screed floors in indoor areas. Installation housing with pre-marked insertion openings for pipes (M20/M25). Cover adjustable to top edge of floor covering using four height-adjustment supports. The minimum installation depth is 110 mm, the height-adjustment range is +25 mm.

Frame and cover made of stainless steel and visible in the floor covering. The load-bearing capacity of 15 kN is only guaranteed when in an unused state.

The scope of delivery contains a double NF socket.

Up to two modular data sockets can be installed in the optional mounting support.

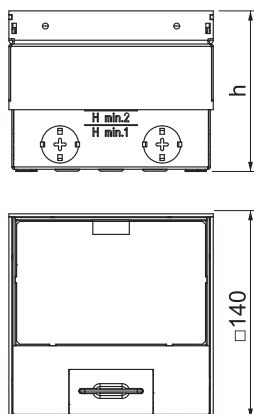


A2 Stainless steel, rustproof

Master data

Item no.	7368330
Type	UDHOME2 GV15N
Description 1	Floor socket
Description 2	with double NF socket
Dimension	140x140x110
Material	Stainless steel, material A2
Material symbol	A2
Smallest sales unit (VG)	1 Piece
Weight	230,00 kg/100 pc.

Technical data



Length	140,00 mm
Width	140,00 mm
Height	110,00 mm
Dimension h	110,00 mm
Number of installable devices	2
Cable outlet version	Swivellable cord outlet
Floor covering thickness	15,00 mm
Floor covering protection frame	<input type="checkbox"/>
Floor care	Dry
Version for	Square
Application when used	6.101.1 Dry floor care
Application when unused	6.101.1 Dry floor care
Floor height	110-135 mm
Device support to accept mounting boxes	<input type="checkbox"/>
Suitable for wet care	<input type="checkbox"/>
Suitable for screed-flush closed underfloor ducts	<input type="checkbox"/>
Suitable for screed-covered underfloor ducts	<input type="checkbox"/>
Suitable for raised floor installation	<input checked="" type="checkbox"/>
Suitable for cavity floor installation	<input checked="" type="checkbox"/>

Technical data sheet

UDHOME2 floor socket, with floor covering recess,
double NF, stainless steel
Item no. 7368330



Technical data

Suitable for underfloor ducts	<input type="checkbox"/>
With floor covering recess	<input checked="" type="checkbox"/>
Nominal size for device installation units	2
Standard	EN 50085-2:2
Opening mechanism	Handle
Frame version	Floor covering contact edge
Heavy-duty version	<input type="checkbox"/>
Protection rating (IP) when used	IP20
Protection rating (IP) when unused	IP40
Protection rating IK code	IK10
Approvals	
Vertical load, small area	to 3,000 N

X-ON Electronics

Largest Supplier of Electrical and Electronic Components

Click to view similar products for [Electrical Enclosures](#) category:

Click to view products by [OBO BETTERMANN](#) manufacturer:

Other Similar products are found below :

[MR-25L+](#) [1584DMGPK](#) [30-8739](#) [30-9715](#) [30-9777-BU](#) [110-402](#) [A242012LP](#) [A16N12BLP](#) [111-005](#) [9511096](#) [9511016](#) [9820006](#) [1010.600](#)
[AR242410CHSSL](#) [127-406](#) [127-906](#) [79021101](#) [EKIV 17](#) [EKIV 37](#) [18600801](#) [19501001](#) [19701101](#) [19600901](#) [TRH 24](#) [A317SEAL](#)
[A3735SEAL](#) [A3783SEAL](#) [X16C LGR-TR](#) [X25C LGR-TR](#) [T 160 OE HD LGR](#) [T 350 OE HD LGR](#) [T 60 M20](#) [T 60 M20 NL](#) [SDB 03 PS](#)
[P2018SEAL](#) [EN1309N4](#) [EN1511N4LATCH](#) [GSV171](#) [2763-00](#) [2765-00](#) [2761-00](#) [00 070](#) [00 071](#) [0212-00](#) [0213-00](#) [0217-00](#) [0221-00](#) [0222-00](#) [0224-00](#) [0225-00](#)