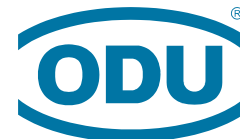


PROTECTIVE CAPS

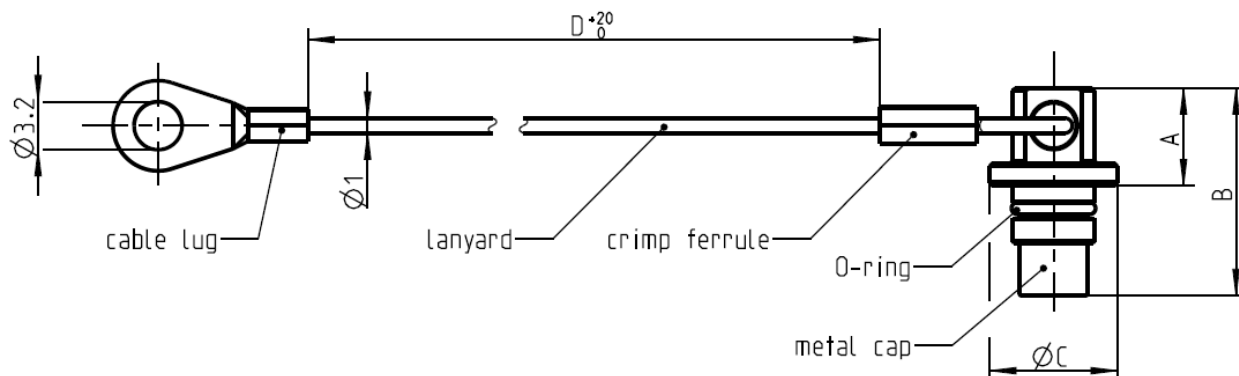
ODU AMC[®] HIGH-DENSITY

“CHROME VERSION”



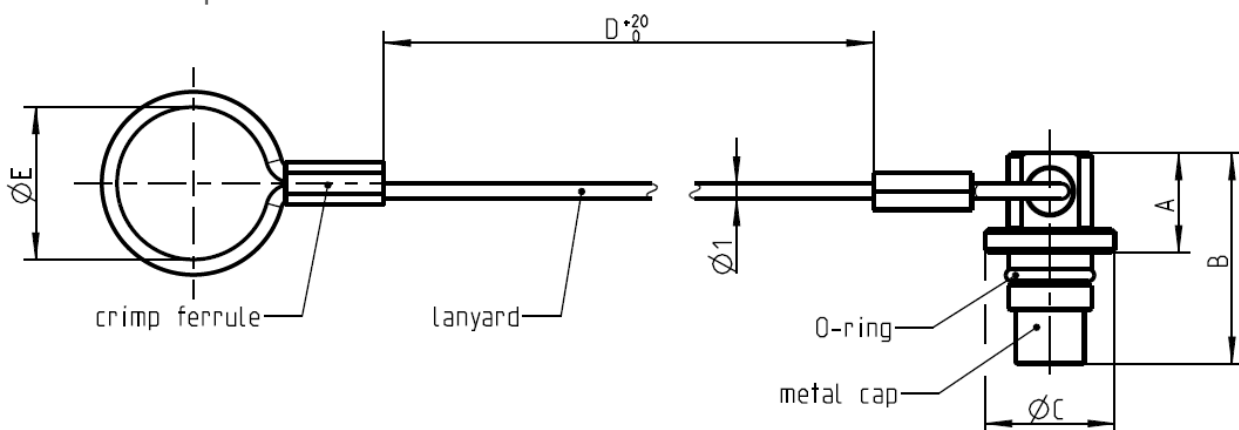
A PERFECT ALLIANCE.

Protective Caps for receptacle GK and G6



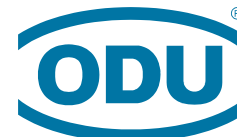
Size	Part number	Dimensions in mm			
		A	B	C	D
00	713.650.097.004.315	6,5	13,8	8,6	70
0	700.650.097.004.315	6,5	13,8	10,7	75
1	701.650.097.004.315	6,5	13,8	13,5	80
1.5	715.650.097.004.315	6,5	13,8	14,8	85

Protective Caps for in-line receptacle K1



Size	Part number	Dimensions in mm				
		A	B	C	D	E
00	713.650.097.005.315	6,5	13,8	8,6	70	10
0	700.650.097.005.315	6,5	13,8	10,7	75	13
1	701.650.097.005.315	6,5	13,8	13,5	80	15
1.5	715.650.097.005.315	6,5	13,8	14,8	85	17

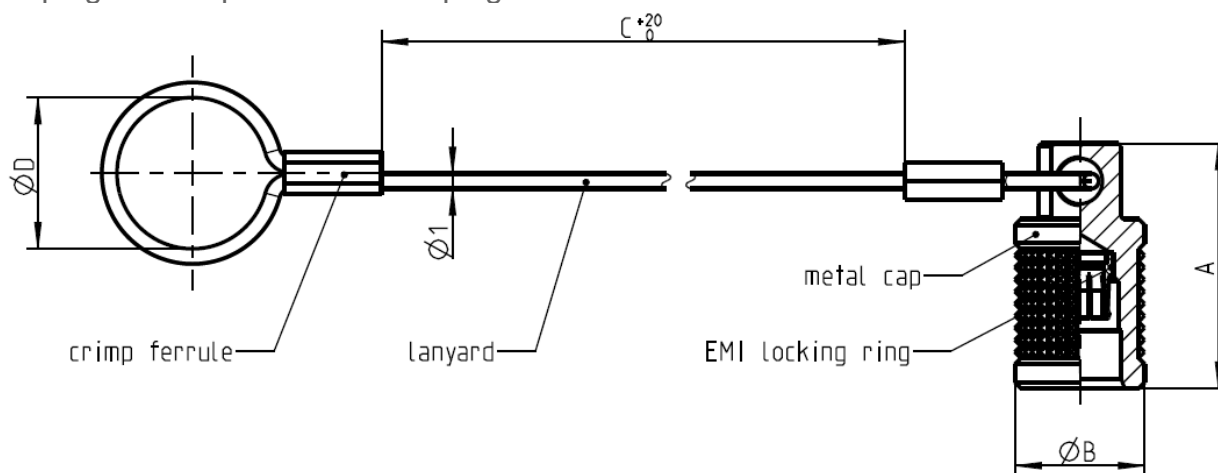
PROTECTIVE CAPS ODU AMC[®] HIGH-DENSITY “CHROME VERSION”



A PERFECT ALLIANCE.

Protective Caps

for plug A1 and panel mounted plug GW



Size	Part number	Dimensions in mm			
		A	B	C	D
00	713.650.097.003.315	16,2	8,6	70	10
0	700.650.097.003.315	16,2	10,7	75	13
1	701.650.097.003.315	16,2	13,5	80	15
1.5	715.650.097.003.315	16,2	14,8	85	17

Environmental characteristics

Requirement	Performance
Tightness	IP68 (2 m)

Materials and surfaces

Part	Material / Surface
Metal Cap	Brass / matt chrome coated nickel
Crimp ferrule	Brass / silver
Cable lug	Brass / silver
EMI locking ring	CuBe / gold coated nickel
Lanyard	Polyamid / white
O-ring	FKM / black

X-ON Electronics

Largest Supplier of Electrical and Electronic Components

Click to view similar products for [Circular Push Pull Connectors](#) category:

Click to view products by [ODU](#) manufacturer:

Other Similar products are found below :

[6407-249V-11273P](#) [6408-201V-13273](#) [6408-202V-13343](#) [6408-202V-17343](#) [EZG.0B.309.CLN](#) [FFA.2S.310.ZLA](#) [FGA.1B.307.CYCD72Z](#)
[FGJ.1B.304.CLLD76](#) [FGJ.1B.306.CWLD72](#) [FGJ.2B.302.CYMD82Z](#) [FGJ.3B.304.CYMD10Z](#) [FGJ.3B.304.CYMD82Z](#) [FHG.1B.303.CYCZ](#)
[PCS.01.250.DLLE24](#) [PHG.0K.305.CYMC40Z](#) [PHG.1K.308.CLLK85](#) [PKG.M0.6BL.LZ](#) [PLC.M1.0SL.LA](#) [GMA.10.290.DN](#)
[GMA.3B.090.DA](#) [PRG.M0.6GL.LC52GZ](#) [PSA.1S.275.CTLC66](#) [133020F](#) [1331ER193MZ](#) [1332M107MZ](#) [EAJ.1B.306.CWA](#)
[ECG.XB.312.CLL](#) [1589430-2](#) [ELF.00.250.NTL](#) [BRR.2S.200.PZVG](#) [HR10A-P](#) [CAH.M34.SLL.C72GZ](#) [CAJ.M34.SLL.C72GZ](#) [300500](#)
[EXG.0B.309.HLN](#) [FFA.2E.302.CLAC80Z](#) [FFB.1S.250.CLAC27](#) [FGA.2B.306.CYCD92Z](#) [FGJ.2B.302.CYMD62Z](#) [FGJ.2B.307.CLLD99](#)
[FGJ.3B.308.CLLD72Z](#) [FHG.1B.303.CYCD62](#) [FLC.00.250.CTAC31](#) [PCS.01.250.DLLE31](#) [PKA.M1.0TL.LG](#) [PKC.M0.7GL.NG](#)
[PKG.M0.4TL.LZ](#) [PPG.M1.0GG.N](#) [PRG.M0.4GL.LC39GZ](#) [PXG.M0.8GG.NG](#)