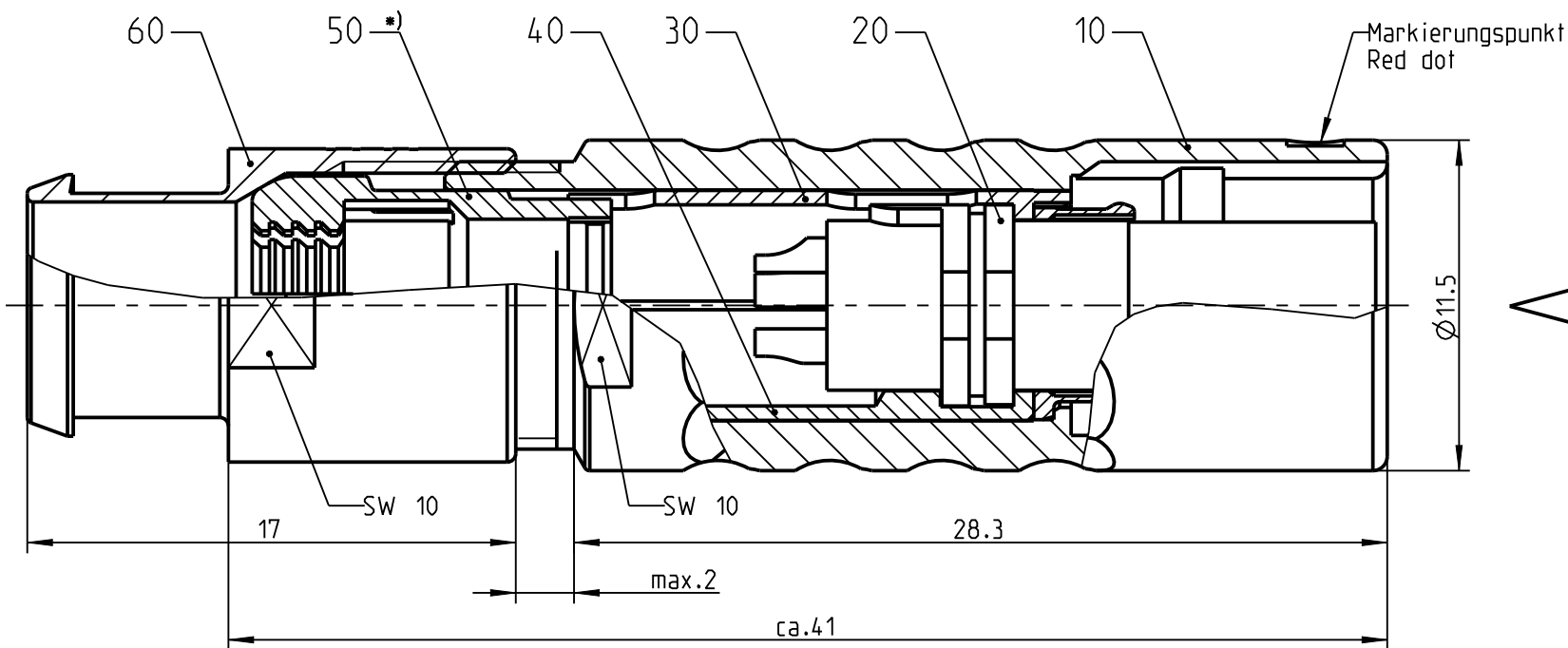
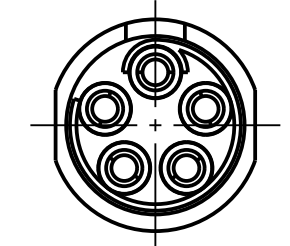


K21L0_--_--

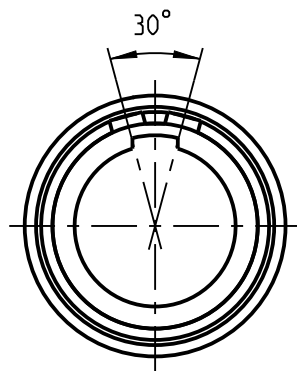
Anzugsdrehmoment: 1.0 Nm
torque value:



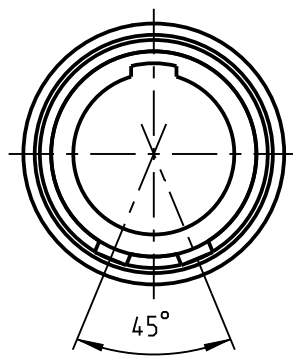
Nur Einsatz dargestellt
View only insert



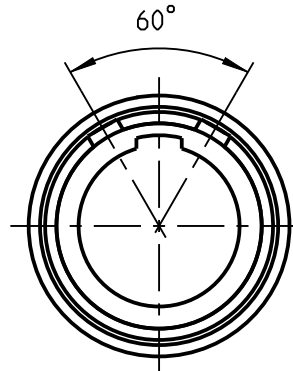
Weitere Kodierungen in Richtung "A":
further codings in direction "A":
3:1



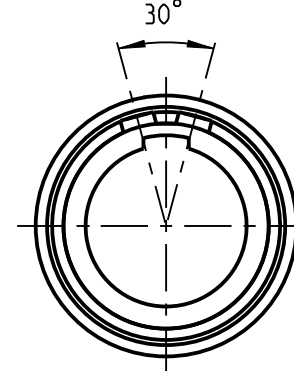
K21LA_--_--



K21LC_--_--

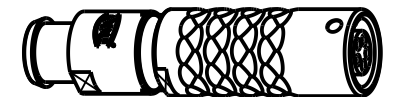
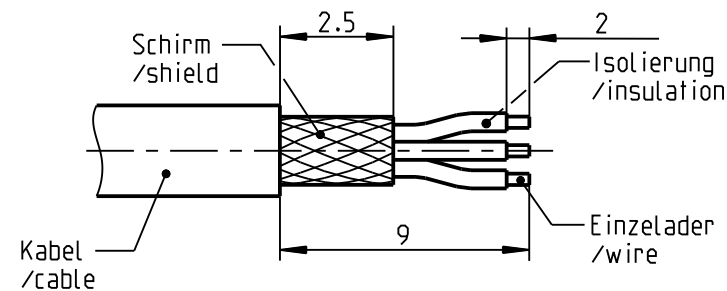


K21LF_--_--



K21LJ_--_--

empfohlene Abisolierlänge
/recommended cable preparation



M 1:1

*) Darstellung nur Beispiel
figure on only for example

Knickschutztuelle separat bestellen
order cable bend relief separately

Technische Daten/Technical Data:

Werkstoffe/Materials:
Gehäuse/Housing:

Cu-Legierung
/cu-alloy
Cu-Legierung
/cu-alloy
PEEK

Kontakte/Contacts:

Isolierkörper/Insulation Body:

Oberflächen/Surfaces:
Gehäuse/Housing:

siehe Tabelle
see table
gal. Au

Kontakte/Contacts:

Schutzart/Protection class:
im gesteckten Zustand
/plugged condition

IP 50

KontaktØ/ContactØ:
Anschluß/Termination:
Löt/solder

Ø0.9 mm
0.38mm²
AWG 22

Prüfspannung/Test Voltage:

1.35 kV AC (SAE AS 13441)


Strombelastung/Current Load:
Einzelkontakte/single contacts:

7.5 A

Bei den hier dargestellten ODU-Steckverbindern handelt es sich nach
DIN EN 61984:2009 um Steckverbinder ohne Schaltleistung (COC) !
/the pictured ODU-connectors are in relation to DIN EN 61984:2009
connectors without switching capacity (COC) !

| | |
|---------------------|--|
| K21L_C-P05LJG0-__OS | matt verchromt matt chrome plated |
| K21L_S-P05LJG0-__OS | schwarz verchromt black chrome plated |
| Oxaion-ID | Oberfl. Gehäuse/ surface housing |

| | |
|---------------------|------------------|
| K21L__-P05LJG0-770S | > 7.0 - 7.7 mm |
| K21L__-P05LJG0-720S | > 6.0 - 7.2 mm |
| K21L__-P05LJG0-620S | > 5.0 - 6.2 mm |
| K21L__-P05LJG0-520S | > 4.0 - 5.2 mm |
| K21L__-P05LJG0-420S | > 3.0 - 4.2 mm |
| K21L__-P05LJG0-320S | > 2.0 - 3.2 mm |
| K21L__-P05LJG0-220S | > 1.5 - 2.2 mm |
| Oxaion-ID | KabelØ cableØ |

| | | | | | |
|--|--|--|--|-----------------------------------|--|
|  | | Benennung/description: Kabelteil cpl. | | Werkstoff: material: seeBOM | |
| Allgemeintoleranz/general tol.: DIN ISO 2768-mH Tolerierung / Tolerancing: DIN ISO 8015 | | CAD-Nr.: design-ID: 00147276 | | Maßstab: scale: 4:1 | |
| Status/state: Approved | | Version: revision: - | | Format: size: A3 | |
| Erstellt/prepared 04.09.2018 tschroedl | | Teile-ID: part-ID: | | Einheit: dim.: mm | |
| Geändert/revised 04.09.2018 tschroedl | | Oxaion-Nr.: K21L__-P05LJG0-__OS | | Bl.: sheet: 1 | |
| Freigabe/released 05.09.2018 srueckerl | | Ursprung/origin.: | | | |
| ODU-MUEHLDOERF | | Datum/date | | Name/name | |

X-ON Electronics

Largest Supplier of Electrical and Electronic Components

Click to view similar products for [Circular Push Pull Connectors](#) category:

Click to view products by [ODU](#) manufacturer:

Other Similar products are found below :

[6407-249V-11273P](#) [6408-201V-13273](#) [6408-202V-13343](#) [6408-202V-17343](#) [EZG.0B.309.CLN](#) [FFA.2S.310.ZLA](#) [FGA.1B.307.CYCD72Z](#)
[FGJ.1B.304.CLLED76](#) [FGJ.1B.306.CWLD72](#) [FGJ.2B.302.CYMD82Z](#) [FGJ.3B.304.CYMD10Z](#) [FGJ.3B.304.CYMD82Z](#) [FHG.1B.303.CYCZ](#)
[PCS.01.250.DLLE24](#) [PHG.0K.305.CYMC40Z](#) [PHG.1K.308.CLLK85](#) [PKG.M0.6BL.LZ](#) [PLC.M1.0SL.LA](#) [GMA.10.290.DN](#)
[GMA.3B.090.DA](#) [PRG.M0.6GL.LC52GZ](#) [PSA.1S.275.CTLC66](#) [133020F](#) [1331ER193MZ](#) [1332M107MZ](#) [EAJ.1B.306.CWA](#)
[ECG.XB.312.CLL](#) [1589430-2](#) [ELF.00.250.NTL](#) [BRR.2S.200.PZVG](#) [HR10A-P](#) [CAH.M34.SLL.C72GZ](#) [CAJ.M34.SLL.C72GZ](#) [300500](#)
[EXG.0B.309.HLN](#) [FFA.2E.302.CLAC80Z](#) [FFB.1S.250.CLAC27](#) [FGA.2B.306.CYCD92Z](#) [FGJ.2B.302.CYMD62Z](#) [FGJ.2B.307.CLLED99](#)
[FGJ.3B.308.CLLED72Z](#) [FHG.1B.303.CYCD62](#) [FLC.00.250.CTAC31](#) [PCS.01.250.DLLE31](#) [PKA.M1.0TL.LG](#) [PKC.M0.7GL.NG](#)
[PKG.M0.4TL.LZ](#) [PPG.M1.0GG.N](#) [PRG.M0.4GL.LC39GZ](#) [PXG.M0.8GG.NG](#)