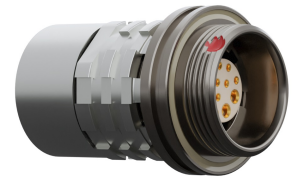


## General information

Part number	KCCWAM-P04WBC0-0000
Termination	solder
Size	00
Locking principle	break , screw
Coding	a_key_amc
Cable Diameter	cable_amchd_C
Cable outlet	overmolding



Illustrations may differ from original product.  
Dimensions, unless otherwise specified, in mm.



The pin layout corresponds to the view on the termination area

## Contact insert description

Number of contacts	4
Contact type	sockets
Contact diameter	03mm
Insulator material	peek
Wire cross section	28_awg
Termination	solder

reverse\_gender\_on\_request

## Technical information

Nominal current single contact	01_a	iec_60512_5_2
Nominal current insert	1 A	vde_0298_4
Test voltage	09_kv_dc	eia_364_20f

safety\_text

## Mechanical and environmental data

Degree of protection*	ipsk8_ip6k9k
Operating temperature	51_125_c
Mating cycles	5000

mated

### Material and surface treatments

<b>Housing</b>	ruthenium
<b>Contact</b>	cu_alloy_gold

safety\_text\_2  
ul\_text  
illustrative\_text

## X-ON Electronics

Largest Supplier of Electrical and Electronic Components

*Click to view similar products for [Circular Push Pull Connectors](#) category:*

*Click to view products by [ODU](#) manufacturer:*

Other Similar products are found below :

[6407-249V-11273P](#) [6408-201V-13273](#) [6408-202V-13343](#) [6408-202V-17343](#) [FGC.2B.303.CYBD42Z](#) [FGJ.0B.304.CYZZ](#) [PLC.M1.0SL.LA](#)  
[1589430-2](#) [169-0105-02](#) [FFA.1S.130.LC](#) [6408-201V-11273](#) [6408-201V-11343](#) [6408-202V-25273](#) [980-0009-471](#) [NCG044SC2DC006](#)  
[GMA.4B.013.DN](#) [1331E103MZ](#) [342491](#) [PCA.1S.303.ZLLT](#) [FHG.00.305.CLAD35](#) [39050630713002](#) [1332E319FZ](#) [342379](#)  
[PAG.M0.6SL.AC52G](#) [300374](#) [SOB.187.GN](#) [FFA.2S.130.LC](#) [JBXEA2G003MSNDS](#) [JBXFN0G07MSSDSR](#) [FNG.1B.304.U2034](#)  
[JBXER1G04MCSDSR](#) [JBXEA2G04MSNDS](#) [1331M303FS](#) [JBXER1G03MCSDSR](#) [FEG.1B.302.CYBD52](#) [S41M08-P02MPN0-528S](#) [FLBB-](#)  
[05EGFS-GCP-001](#) [FLBB-05FGMS-GCP-207](#) [PCA.1S.306.CLCC66](#) [702.098.001.000.000](#) [10-711587-040](#) [FGG.2B.560.ZZF](#)  
[FGG.2B.560.ZZK](#) [FGG.4B.555.ZZF](#) [FGG.4B.555.ZZK](#) [PHG.4K.310.CLCC11](#) [ECG.2B.514.CLL](#) [GA1M08-P04LJG0-0000](#) [S10K0C-](#)  
[P05PFG0-5000](#) [FGB.1K.316.CLAC55Z](#)