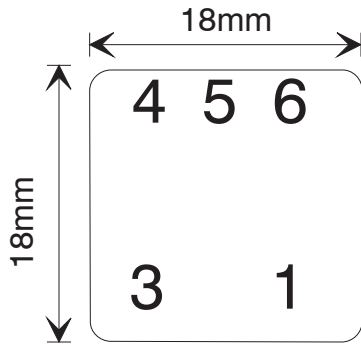
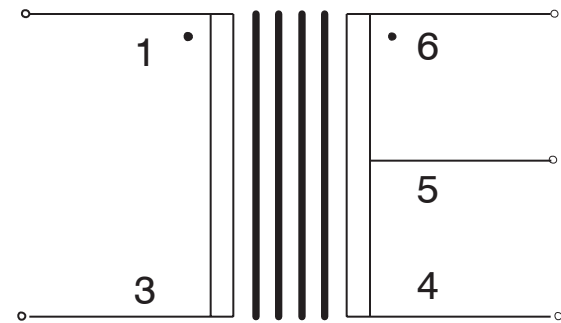
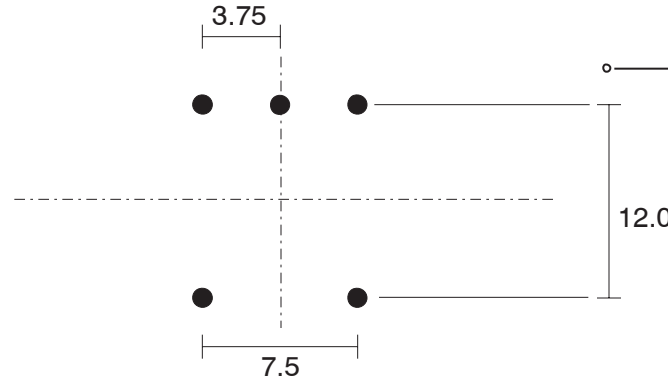




Label fitted with 'SEC'
above pins 4 - 5 - 6.
XZZ = date code



Top view



● = electrical start

Overall transformer dimensions

H = 15mm (excluding pins)
D = 18mm
W = 18mm

Tolerance on all hole positions +/-0.5mm
Pin diameter = 0.6mm

Windings separated by 3 layers No. 56 tape or equivalent
Bobbin: EF16
All material to comply with UL and EN60950

Electrical Specification:

Primary DC resistance: 109 ohms +/- 15%
Total Secondary DC resistance: 134 ohms +/- 15%
Impedance matching:
600 - 800 ohms to 600 - 800 ohms C.T.
Power handling:
60Hz - 25KHz 2mW/600 ohms for <1% THD at 60Hz
Frequency response at 2mW: 60Hz - 25KHz +/- 0.5dB
Frequency response at 0.2mW: 30Hz - 25KHz +/- 0.7dB
THD at levels below saturation typically <0.02%
Return loss better than 19dB, 300Hz - 3.4KHz
Inductance, measured at 0.274V, 100Hz
Primary: 7H min.
Secondary: 1.79H min. + 1.79H min.
Hi-pot, primary to secondary: 1.5KV min.



OXFORD ELECTRICAL PRODUCTS Ltd.
15 - 17 Industrial Estate Wroslyn Road
Freeland, Witney, Oxon. OX29 8SN
Telephone (01993) 886200
Fax. (01993) 886210

DESCRIPTION	ISSUE	DATE	DRAWN	CCN No.	CHECKED
Specification for Z1604	1	04/07/02	CS		
	2	16/12/02	CS		
Scale : nts					
All Dimensions In mm Unless Stated Otherwise					

DRAWING NUMBER

Z1604

X-ON Electronics

Largest Supplier of Electrical and Electronic Components

Click to view similar products for [oep](#) manufacturer:

Other Similar products are found below :

[016608F](#) [PT4](#) [PT8](#) [E187B](#) [PT42E](#) [TF048](#) [Z1604](#) [P1200](#)