

ACS Silicon Coated Axial Resistors **ARCOL**

The design of the ACS resistor provides a good balance of power density, stability and resistance to environment for a broad range of industrial power applications, such as drives and controls.

- Good ratio between power capability and physical size
- Wound to maximise high pulse capability
- Low inductive versions available
- Available on tape and reel 1W to 5W or bulk
- RoHS Compliant



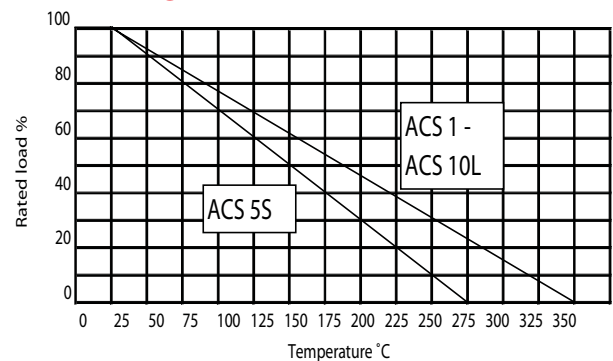
Characteristics

Tolerance (Code):	Standard F ($\pm 1\%$), J ($\pm 5\%$) and K ($\pm 10\%$); other tolerances available on request
Temperature coefficient:	$<1R \pm 90\text{ppm}/^\circ\text{C}$, $1R-10R \pm 50\text{ppm}/^\circ\text{C}$, $>10R \pm 20\text{ppm}/^\circ\text{C}$
Insulation resistance:	1,000M ohms minimum dry, 100M ohms minimum after moisture test
Dielectric withstand voltage:	500V AC
MIL types:	Available upon request.

Electrical Specifications

Type	Wattage	Max working voltage (V)	Resistance range	
			Inductive	Non Inductive (N)
ACS 1	1	50	R01 - 8K	R01 - 3K
ACS 2	2	100	R01 - 10K	R1 - 4K
ACS 3	3	200	R01 - 18K	R01 - 9K
ACS 5S	5	157	R01 - 22K	R01 - 10K
ACS 5L	5	400	R01 - 35K	R1 - 17K
ACS 7	7	450	R01 - 50K	R1 - 25K
ACS 10S	10	700	R01 - 70K	R01 - 35K
ACS 10L	10	800	R01 - 100K	R01 - 50K

Derating Curve



Typical Inductance

Type	<50 ohms	>50 ohms
ACS 1 - ACS2	0.2 μH	0.37 μH
ACS 3 - ACS5L	0.3 μH	0.6 μH
ACS 7 - ACS 10L	0.65 μH	1.2 μH

As specified by MIL-R-39007. Max series inductance at 0.5MHz.

Ordering Procedure

Standard Resistor To specify standard: Series, Wattage Rating, Winding Type, Resistance and Tolerance Code, e.g.: ACS3 18K F
 ACS3N 18K F (non-inductive)
Tolerance (Code) $\pm 0.05\%$ (A), $\pm 0.1\%$ (B), $\pm 1\%$ (F), $\pm 2\%$ (G), $\pm 5\%$ (J), $\pm 10\%$ (K)

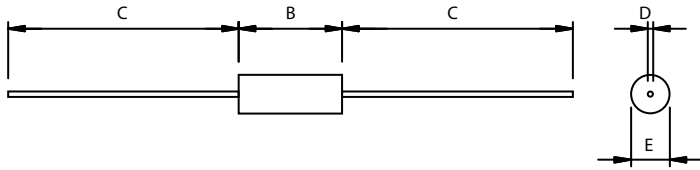
ARCOL UK Limited,
 Threemilestone Ind. Estate,
 Truro, Cornwall, TR4 9LG, UK.
 T +44 (0) 1872 277431
 F +44 (0) 1872 222002
 E sales@arcolresistors.com

www.arcolresistors.com

The information contained herein does not form part of a contract and is subject to change without notice. Arcol operate a policy of continual product development, therefore, specifications may change.

It is the responsibility of the customer to ensure that the component selected from our range is suitable for the intended application. If in doubt please ask Arcol.

Dimensions (mm)



Type	B ± 1.5	C ± 1.0	D ± 0.02	E ± 0.8
ACS 1	12	37.0	0.8	4
ACS 2	13.8	35.0	0.8	4.7
ACS 3	15.7	35.0	0.8	5.9
ACS 5S	13	35.0	0.8	3.5
ACS 5L	22.5	44.0	1.0	8.52
ACS 7	24.5	44.0	1.0	8.52
ACS 10S	43.7	35	1.0	8.52
ACS 10L	46.2	33.0	1.0	10.5

ARCOL UK Limited,
 Threemilestone Ind. Estate,
 Truro, Cornwall, TR4 9LG, UK.
 T +44 (0) 1872 277431
 F +44 (0) 1872 222002
 E sales@arcolresistors.com

www.arcolresistors.com

The information contained herein does not form part of a contract and is subject to change without notice. Arcol operate a policy of continual product development, therefore, specifications may change.

It is the responsibility of the customer to ensure that the component selected from our range is suitable for the intended application. If in doubt please ask Arcol.

X-ON Electronics

Largest Supplier of Electrical and Electronic Components

Click to view similar products for [Wirewound Resistors - Through Hole category](#):

Click to view products by [Ohmite manufacturer](#):

Other Similar products are found below :

[75822-2K4](#) [90J56R](#) [PW10-39R-5%](#) [ALSR1-20](#) [EP3WS47RJ](#) [RWR81S12R4FRB12](#) [RWR81SR511FRB12](#) [RWR81SR619FRBSL](#)
[RWR89S9310FPB12](#) [27J1K0](#) [93J62RE](#) [AC10000002208JAB00](#) [1HJ-25](#) [FSQ5WR47J](#) [25J39K](#) [25J5R0-B](#) [25W1D0](#) [272-303-JBW](#) [280-](#)
[PRM5-150-RC](#) [CP0005270R0JE1491](#) [CPCC0510R00JE32](#) [CPCC051R000JB31](#) [CPW052K500JE143](#) [CPW05700R0JE143](#) [C1010RJL](#)
[CA000210R00JE14](#) [VPR5F1500](#) [RS02B887R0FE73](#) [RWR84S1001FRB12](#) [RWR84S20R0FSBSL](#) [RWR89S6190FSB12](#)
[RWR89SR237FRB12](#) [CPW055R000JB143](#) [ULW5-39R0JT075](#) [W31-R47JA1](#) [VP25K-120](#) [VC3D900](#) [ULW5-68RJT075](#) [65888-3R3](#)
[RWR81S4R64FRS70](#) [RWR81S4R22FRB12](#) [RWR80N3400FSB12](#) [RWR81S1000FRB12](#) [RWR81S2R00FRB12](#) [RWR89N30R1FRB12](#)
[RWR81S4R99FPB12](#) [RWR74S4R02FRRSL](#) [VC3D.5](#) [280-PRM7-4.7-RC](#) [SQM500JB-200R](#)