

AFM Series

Single Phase Medical Grade Inlet-type EMI Filter



These series range of filters with IEC Inlet are designed to suppress undesirable electrical disturbances in Power Lines. They limit the amplitude of interfering voltages on AC power lines and prevent them from propagating into or out of the filtered equipment.

FEATURES

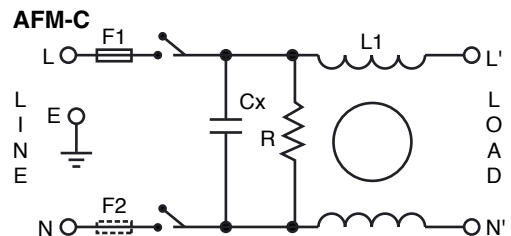
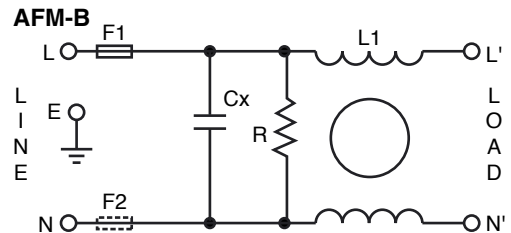
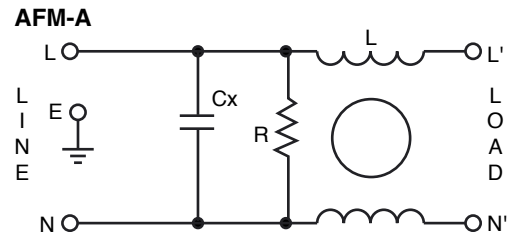
- Rated Current up to 15A
- Low Leakage
- High Conducted attenuation performance
- Excellent performance/size ratio
- Integral IEC Connector
- Single/Double Fuse Option
- Double Pole/Single Throw Switch

APPLICATIONS

- Medical Equipment
- Diagnostic Equipment
- X ray Machine



CIRCUIT DIAGRAMS



CHARACTERISTICS

Max. Cont. Oper. Voltage	250VAC
Operating Frequency	50/60Hz
Current ratings	AFM-A: 1A to 15A @40°C, AFM-B: 1A to 6A @40°C; AFM-C: 1A to 10A @40°C
High Potential test voltage	L to G 2120VDC for 1 min.; L to L 1414VDC for 1 min.
Overload Capability	135% of Rated current for 15 min.
Design	Corresponding to UL 60939-3, CSA 22.2 No.8-13 and IEC 60939
Flammability	Corresponding to UL 94 V-0
Temperature range	-25°C to +85°C
Climatic Category	25/85/21
Enclosure Material	AFM-A and B: Aluminium; AFM-C: CRCA
Termination	Fastons 6.3x0.8

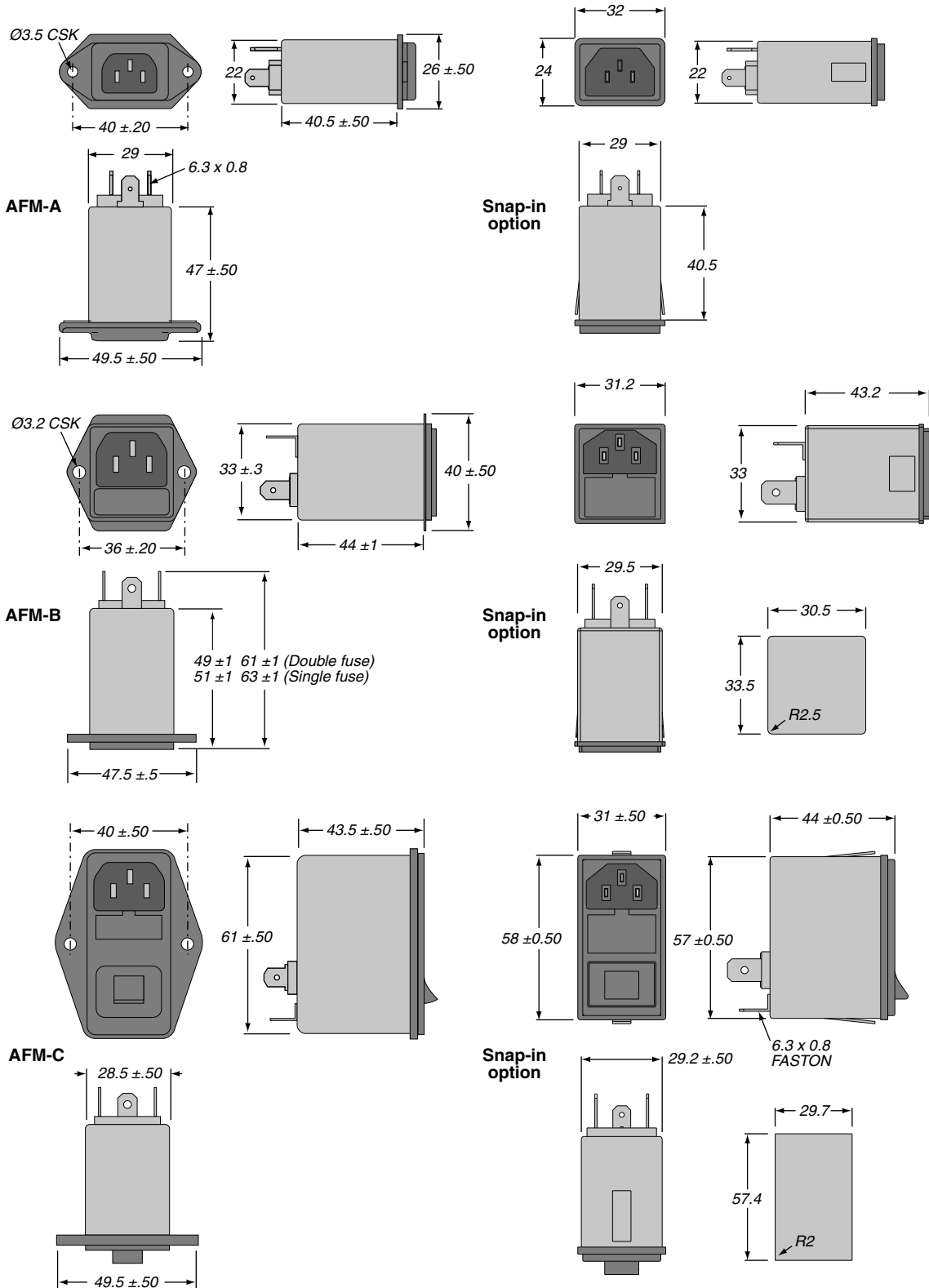
(continued)

AFM Series

Single Phase Medical Grade Inlet-type EMI Filter

DIMENSIONS

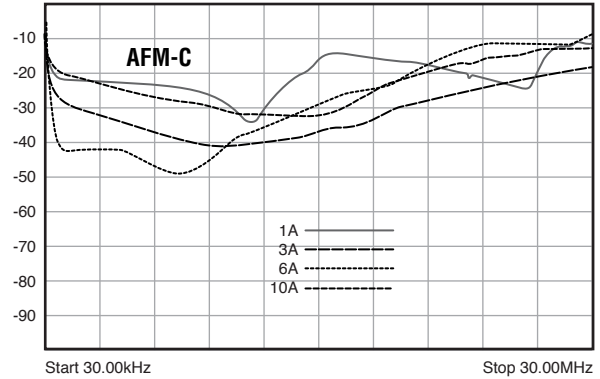
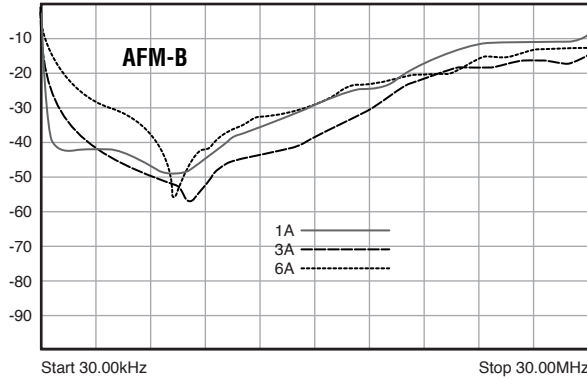
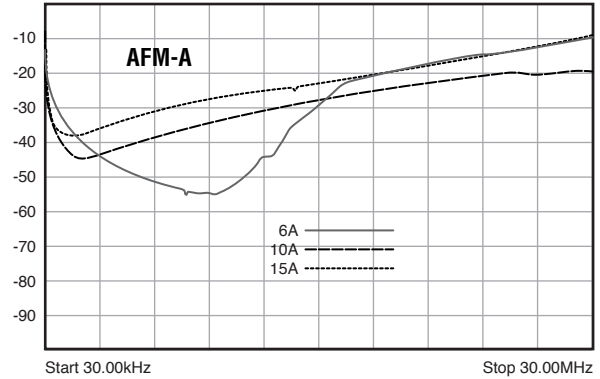
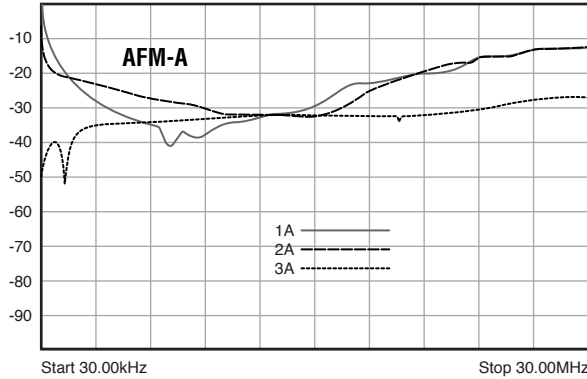
All dimensions in mm; Tolerances according to ISO2768-m



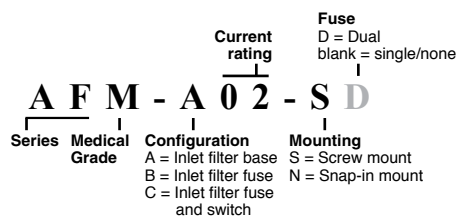
AFM Series

Single Phase Medical Grade Inlet-type EMI Filter

INSERTION LOSS



ORDERING INFORMATION



Part No.	Rated current @40°C	Weight (g)
AFM-A03S	3A	60
AFM-A06S	6A	60
AFM-A10S	10A	60
AFM-A15S	15A	60
AFM-B01S	1A	60
AFM-B03S	3A	60
AFM-B06S	6A	60
AFM-B01SD	1A	60
AFM-B03SD	3A	60
AFM-B06SD	6A	60
AFM-C01S	1A	120
AFM-C03S	3A	120
AFM-C06S	6A	120
AFM-C10S	10A	120

X-ON Electronics

Largest Supplier of Electrical and Electronic Components

Click to view similar products for [Power Line Filters](#) category:

Click to view products by [Ohmite](#) manufacturer:

Other Similar products are found below :

[6609019-3](#) [6609026-5](#) [6609030-6](#) [6609973-2](#) [D30A](#) [7-1609090-5](#) [F2810](#) [F4456A](#) [F7382Z](#) [F7863Z](#) [FAHAV3100ZC000](#) [806276](#) [FN2020B-1-06](#) [FN2080B-10-06](#) [FN2410H-32-33](#) [FN2410H-80-34](#) [FP144](#) [FS4153-20-06](#) [FS4353-500-99](#) [12-MMB-030-11-D](#) [DB4-393](#) [15811T200](#) [20B1](#) [LC630](#) [2B1](#) [1609080-2](#) [1609993-8](#) [1-6609070-1](#) [F1100AA02](#) [F1150CC10](#) [F1500CA10](#) [F1500CA15](#) [F4041Z](#) [F7585E](#) [1B1](#) [FN2070A-16-06](#) [FN2090A-20-06](#) [FN2090B-12-06](#) [FN2090Z-1-06](#) [FN2410H-25-33](#) [FN2410H-60-34](#) [FN2410H-8-44](#) [FN2412H-8-44](#) [FN323B-6-01](#) [FN3258H-130-35](#) [FN610R-3-06](#) [20EHQ7](#) [20EHZ7](#) [20K1](#) [30B6](#)