

AGM Series

Single Phase Medical Grade EMI Filter

These series range of General Purpose filters are designed to suppress undesirable electrical disturbances in medical applications for low leakage requirements.



FEATURES

- Rated Current up to 50A
- Low Leakage
- High Conducted attenuation performance
- Chassis mounting

APPLICATIONS

- Diagnostic Equipment
- Surgical Beds
- X ray Machines
- Medical Applications

SERIES SPECIFICATIONS

Part No.	Rated current @40°C	Termination		Weight (kg)
		Tab	Screw	
AGM-001	1A	6.3 x 0.8		0.06
AGM-002	2A	6.3 x 0.8		0.06
AGM-003	3A	6.3 x 0.8		0.06
AGM-006	6A	6.3 x 0.8		0.06
AGM-010	10A	6.3 x 0.8		0.06
AGM-015	15A	6.3 x 0.8		0.125
AGM-016	16A	6.3 x 0.8		0.125
AGM-020	20A	6.3 x 0.8		0.260
AGM-025	25A		M5	0.6
AGM-030	30A		M5	0.6
AGM-035	35A		M5	0.6
AGM-040	40A		M5	0.6
AGM-050	50A		M6	1

CHARACTERISTICS

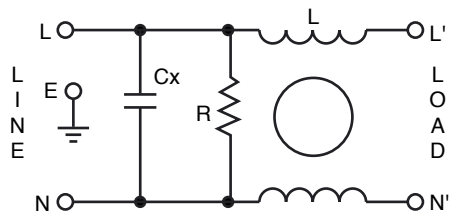
Max. Cont. Oper. Voltage	250VAC
Operating Frequency	50/60Hz
Current ratings	1A to 50A @40°C
High Potential test voltage	L to G 2120Vdc for 1 Minute; L to L 1414Vdc for 1 Minute
Design	Corresponding to UL 60939-3, CSA 22.2 No.8-13 and IEC 60939
Overload Capability	135% of Rated current for 15 minutes
Flammability	corresponding to UL 94 V-0
Temperature range	-25°C to +85°C
Climatic Category	25/85/21
Recommended Torque (Nm)	M5: 1.0-2.0; M6: 1.25 – 2.5

(continued)

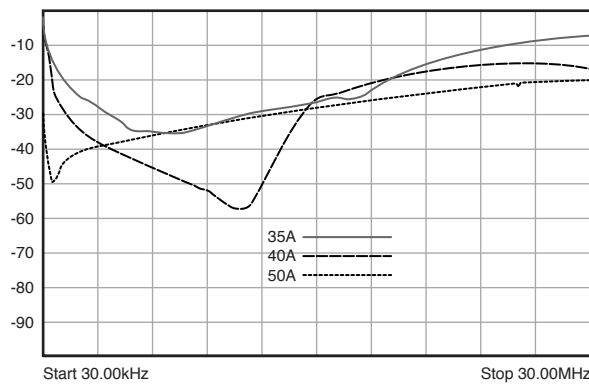
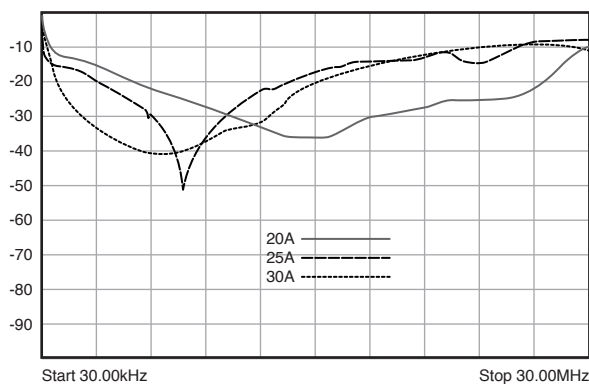
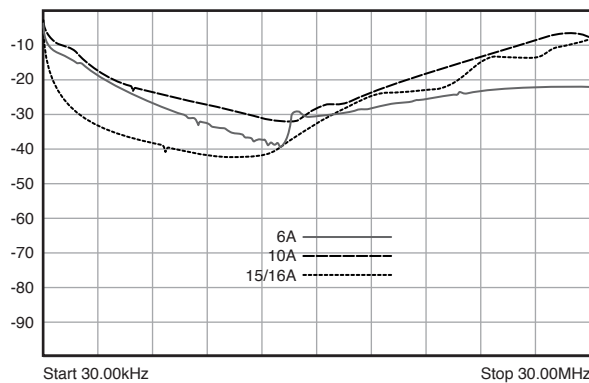
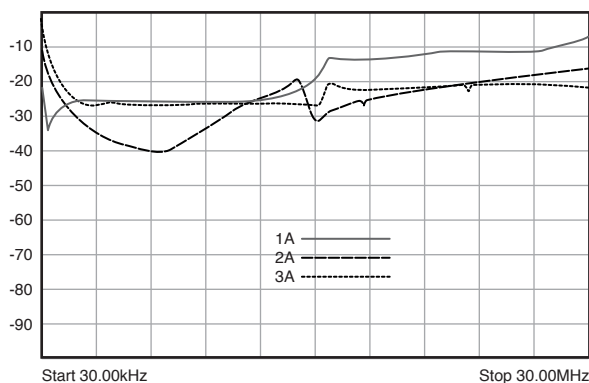
AGM Series

Single Phase Medical Grade EMI Filter

CIRCUIT DIAGRAM



INSERTION LOSS



(continued)

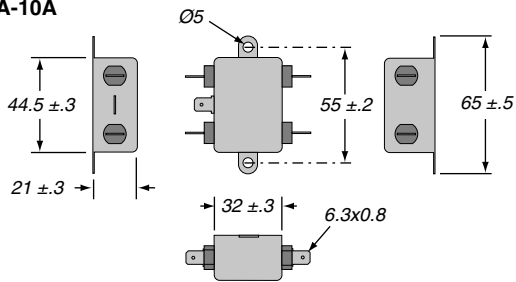
AGM Series

Single Phase Medical Grade EMI Filter

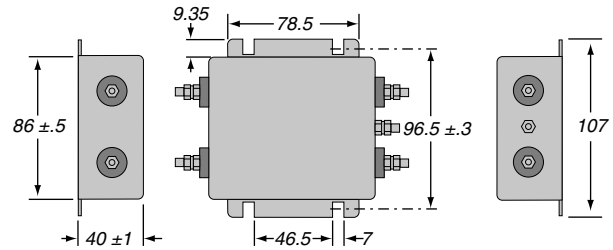
DIMENSIONS

All dimensions in mm; Tolerances according to ISO2768-m

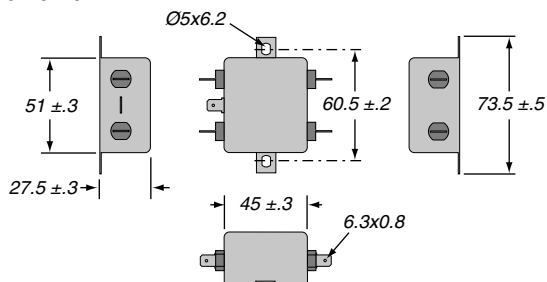
1A-10A



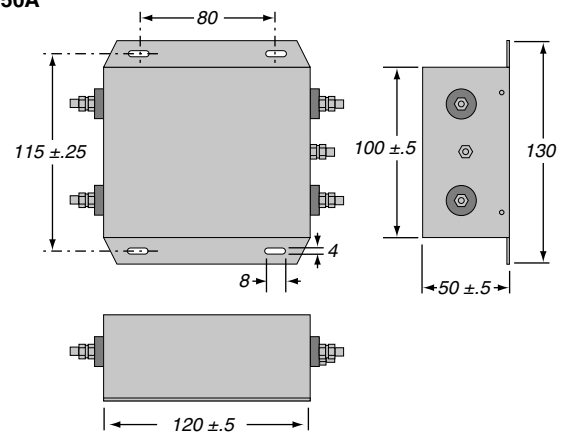
25A to 40A



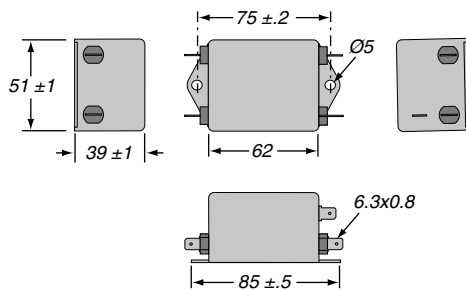
15A & 16A



50A



20A



ORDERING INFORMATION

AGM - 002

Series	Medical grade	Current rating
--------	---------------	----------------

Standard part numbers

- AGM-001
- AGM-002
- AGM-003
- AGM-006
- AGM-010
- AGM-015
- AGM-016
- AGM-020
- AGM-025
- AGM-030
- AGM-035
- AGM-040
- AGM-050

X-ON Electronics

Largest Supplier of Electrical and Electronic Components

Click to view similar products for [Power Line Filters](#) category:

Click to view products by [Ohmite](#) manufacturer:

Other Similar products are found below :

[6609019-3](#) [6609026-5](#) [6609030-6](#) [6609973-2](#) [D30A](#) [7-1609090-5](#) [F2810](#) [F4456A](#) [F7382Z](#) [F7863Z](#) [FAHAV3100ZC000](#) [806276](#) [FN2020B-1-06](#) [FN2080B-10-06](#) [FN2410H-32-33](#) [FN2410H-80-34](#) [FP144](#) [FS4153-20-06](#) [FS4353-500-99](#) [12-MMB-030-11-D](#) [DB4-393](#) [15811T200](#)
[20B1](#) [LC630](#) [2B1](#) [1609080-2](#) [1609993-8](#) [1-6609070-1](#) [F1100AA02](#) [F1150CC10](#) [F1500CA10](#) [F1500CA15](#) [F4041Z](#) [F7585E](#) [1B1](#)
[FN2070A-16-06](#) [FN2090A-20-06](#) [FN2090B-12-06](#) [FN2090Z-1-06](#) [FN2410H-25-33](#) [FN2410H-60-34](#) [FN2410H-8-44](#) [FN2412H-8-44](#)
[FN323B-6-01](#) [FN3258H-130-35](#) [FN610R-3-06](#) [20EHQ7](#) [20EHZ7](#) [20K1](#) [30B6](#)