

AH Series

Single-phase Dual-stage EMI Filters

These series range of double stage filters give superior performance when used in applications with low Impedance loads controlling pulsed, continuous and intermittent interference noise and where high levels of mains borne interference are present.



FEATURES

- Double stage filter
- Medical Version available
- Superior Performance
- Chassis mounting

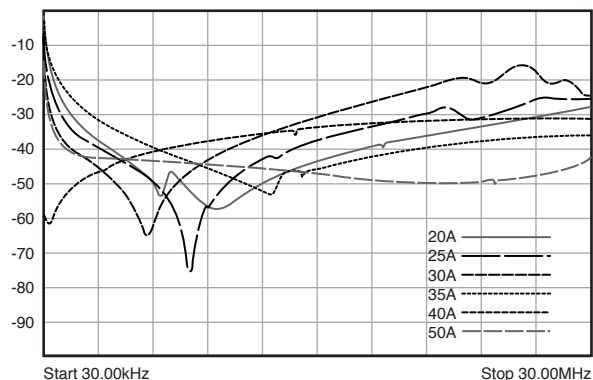
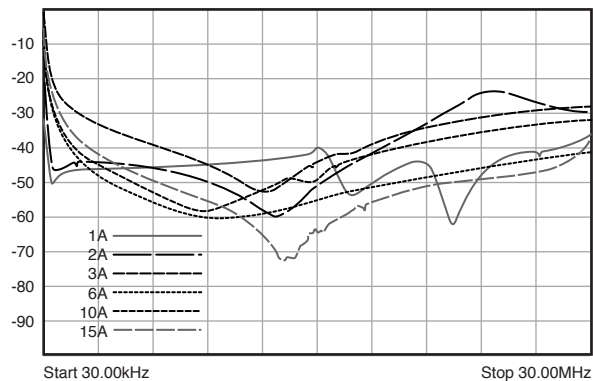
APPLICATIONS

- Power Systems
- Electronic Equipment
- Frequency convertors
- Stepper motor drives
- UPS/Inverters

SERIES SPECIFICATIONS

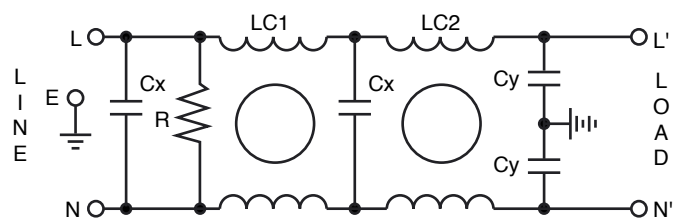
Standard Part No.	Rated current @40°C	Leakage current (mA) @250VAC/50Hz	Termination		Weight (kg)
			Tab	Screw	
AH-01	1A	0.34	6.3 x 0.8		0.125
AH-02	2A	0.34	6.3 x 0.8		0.125
AH-03	3A	0.34	6.3 x 0.8		0.17
AH-06	6A	0.34	6.3 x 0.8		0.17
AH-10	10A	0.34	6.3 x 0.8		0.17
AH-15	15A	0.34	6.3 x 0.8		0.26
AH-20	20A	0.73		M5	0.65
AH-25	25A	0.73		M5	0.65
AH-30	30A	0.73		M5	0.65
AH-35	35A	0.73		M5	1
AH-40	40A	0.73		M5	1
AH-50	50A	0.73		M6	2

INSERTION LOSS



CHARACTERISTICS

Max. Cont. Oper. Voltage	250VAC
Operating Frequency	50/60Hz
Current ratings	1A to 50A @40°C
High Potential test voltage	L to G 2120Vdc for 1 Minute; L to L 1414Vdc for 1 Minute
Design	corresponding to UL 60939-3, CSA 22.2 No.8-13 and IEC 60939
Overload Capability	135% of Rated current for 15 minutes
Flammability	corresponding to UL 94 V-0
Temperature range	-25°C to +85°C
Climatic Category	25/85/21
Recommended Torque (Nm)	M5: 1.0-2.0; M6: 1.25 - 2.5; M8: 2.5-5; M10: 3.5-7



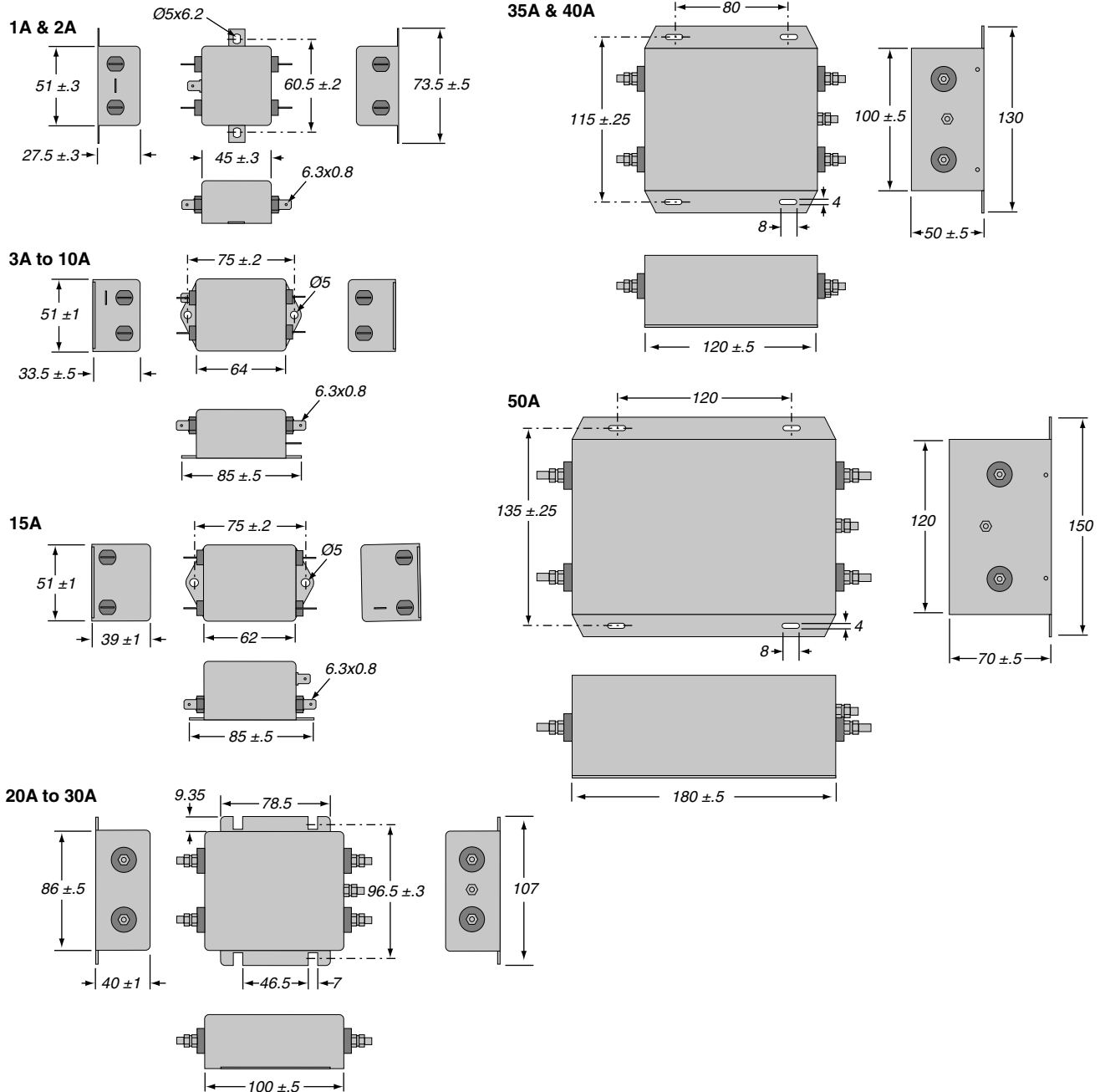
(continued)

AH Series

Single-phase Dual-stage EMI Filters

DIMENSIONS

All dimensions in mm; Tolerances according to ISO2768-m



ORDERING INFORMATION

AH - 02
 Series Current rating

Standard part numbers

AH-01	AH-20
AH-02	AH-25
AH-03	AH-30
AH-06	AH-35
AH-10	AH-40
AH-15	AH-50

X-ON Electronics

Largest Supplier of Electrical and Electronic Components

Click to view similar products for [Power Line Filters](#) category:

Click to view products by [Ohmite](#) manufacturer:

Other Similar products are found below :

[5B1](#) [6609019-3](#) [6609026-5](#) [6609030-6](#) [6609063-2](#) [6609973-2](#) [7-1609090-5](#) [F1500CA06](#) [F7382Z](#) [F7863Z](#) [FAHAV3100ZC000](#) [806276](#)
[FMAC-0FIA-6400](#) [FN2020B-1-06](#) [FN2080B-10-06](#) [FN2090A-1-06](#) [FN2410H-32-33](#) [FN2410H-80-34](#) [FN2412H-16-44](#) [FN420-1-13](#) [FP144](#)
[8-6609089-0](#) [12-MMB-030-11-D](#) [B84144A0050R120](#) [B84144A90R120](#) [20B1](#) [RSEL-2001A](#) [2B1](#) [LP183](#) [1-6609070-1](#) [F1500CA10](#) [1B1](#)
[FN2020A-10-06](#) [FN2020B-3-06](#) [FN2060A-3-06](#) [FN2070A-16-06](#) [FN2070B-16-08](#) [FN2090A-20-06](#) [FN2090B-12-06](#) [FN2090Z-1-06](#)
[FN2410H-25-33](#) [FN2410H-60-34](#) [FN2410H-8-44](#) [FN2412H-25-33](#) [FN2412H-8-44](#) [FN610R-3-06](#) [20EHZ7](#) [20K1](#) [30B6](#) [30BCF10R](#)