

AHL Series

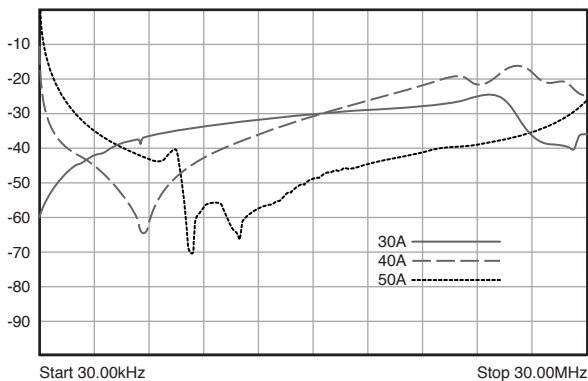
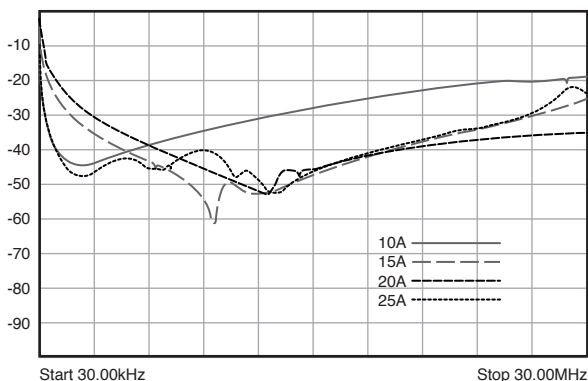
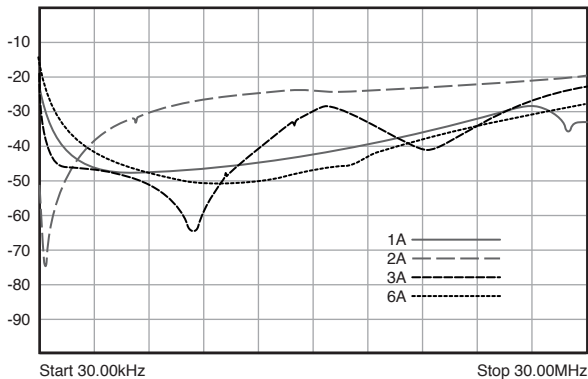
Low-frequency Single-phase Dual-stage EMI Filters

These series range of double stage filters give superior performance when used in applications with low Impedance loads controlling pulsed, continuous and intermittent interference noise and where high levels of mains borne interference are present.

Filter with additional differential mode rejection in low frequency. For use with switched mode power supplies to reduce noise from power supply back into the mains. Filter also provides good attenuation of incoming interference



INSERTION LOSS



FEATURES

- Double stage filter
- Medical Version available
- Superior Performance
- Chassis mounting

APPLICATIONS

- Power Systems
- Electronic Equipment
- Frequency convertors
- Stepper motor drives
- UPS/Inverters

SERIES SPECIFICATIONS

Part No.	Rated current @40°C	Leakage current (mA) @250VAC/50Hz	Termination		Weight (kg)
			Tab	Screw	
AH-L01	1A	0.34	6.3 x 0.8		0.125
AH-L02	2A	0.34	6.3 x 0.8		0.125
AH-L03	3A	0.34	6.3 x 0.8		0.17
AH-L06	6A	0.34	6.3 x 0.8		0.17
AH-L10	10A	0.34	6.3 x 0.8		0.17
AH-L15	15A	0.34	6.3 x 0.8		0.26
AH-L20	20A	0.73		M5	0.65
AH-L25	25A	0.73		M5	0.65
AH-L30	30A	0.73		M5	0.65
AH-L35	35A	0.73		M5	1
AH-L40	40A	0.73		M5	1
AH-L50	50A	0.73		M6	2

CHARACTERISTICS

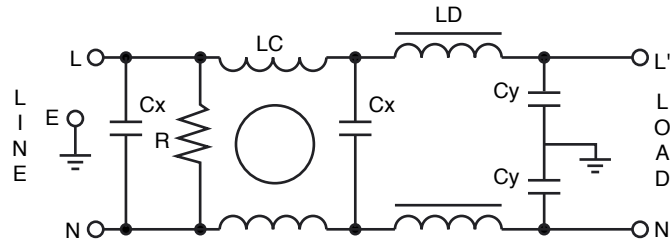
Max. Cont. Oper. Voltage	250VAC
Operating Frequency	50/60Hz
Current ratings	1A to 50A @40°C
High Potential test voltage	L to G 2120Vdc for 1 Minute; L to L 1414Vdc for 1 Minute
Design	corresponding to UL 60939-3, CSA 22.2 No.8-13 and IEC 60939
Overload Capability	135% of Rated current for 15 minutes
Flammability	corresponding to UL 94 V-0
Temperature range	-25°C to +85°C
Climatic Category	25/85/21
Recommended Torque (Nm)	M5: 1.0-2.0; M6: 1.25 – 2.5; M8: 2.5-5; M10: 3.5-7

(continued)

AHL Series

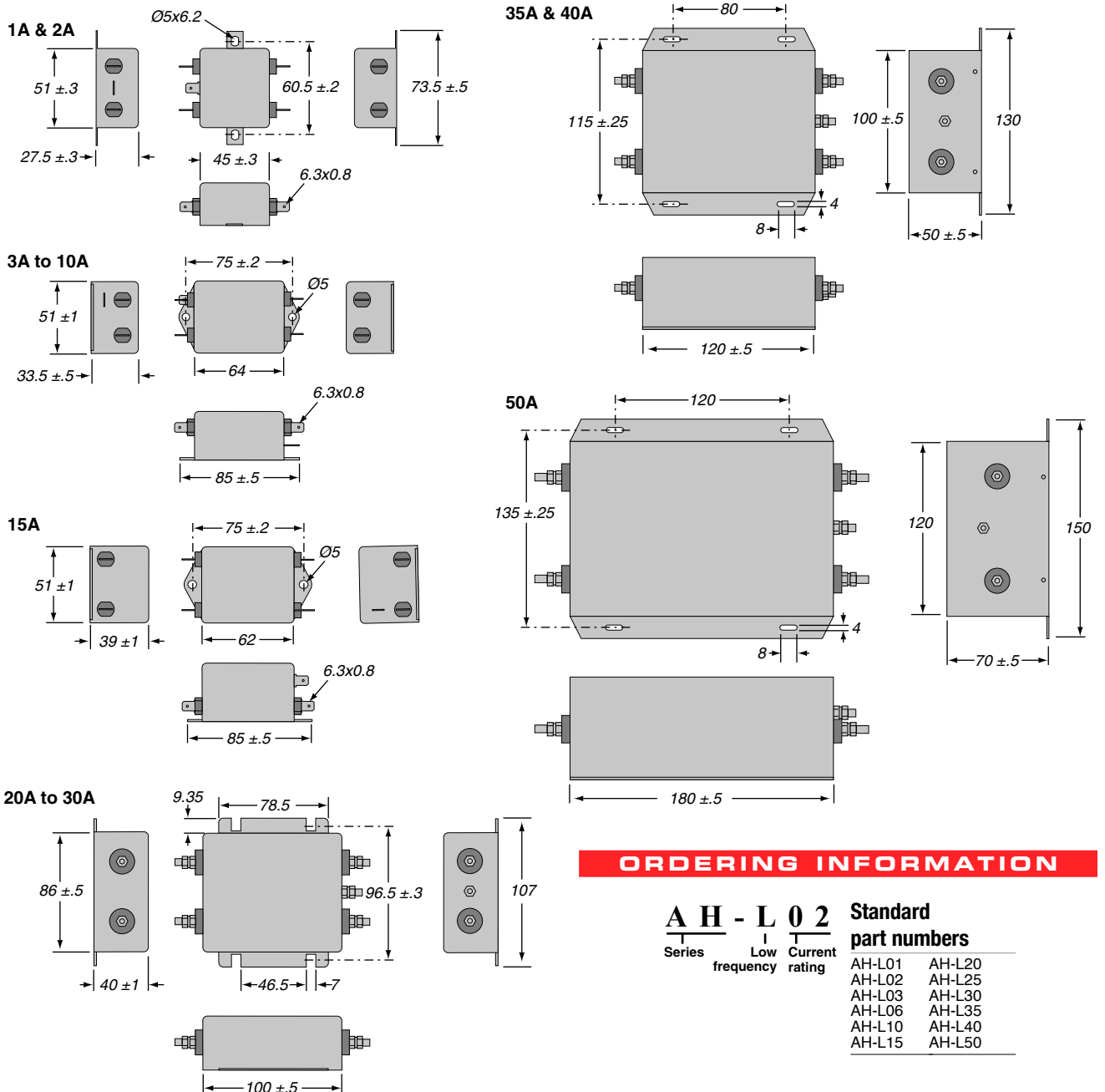
Low-frequency Single-phase Dual-stage EMI Filters

CIRCUIT DIAGRAM



DIMENSIONS

All dimensions in mm; Tolerances according to ISO2768-m



ORDERING INFORMATION

AHL02
 Series | Low frequency | Current rating

Standard part numbers

AH-L01	AH-L20
AH-L02	AH-L25
AH-L03	AH-L30
AH-L06	AH-L35
AH-L10	AH-L40
AH-L15	AH-L50

X-ON Electronics

Largest Supplier of Electrical and Electronic Components

Click to view similar products for [Power Line Filters](#) category:

Click to view products by [Ohmite](#) manufacturer:

Other Similar products are found below :

[5B1](#) [6609019-3](#) [6609026-5](#) [6609030-6](#) [6609063-2](#) [6609973-2](#) [7-1609090-5](#) [F1500CA06](#) [F7382Z](#) [F7863Z](#) [FAHAV3100ZC000](#) [806276](#)
[FMAC-0FIA-6400](#) [FN2020B-1-06](#) [FN2080B-10-06](#) [FN2090A-1-06](#) [FN2410H-32-33](#) [FN2410H-80-34](#) [FN2412H-16-44](#) [FN420-1-13](#) [FP144](#)
[8-6609089-0](#) [12-MMB-030-11-D](#) [B84144A0050R120](#) [B84144A90R120](#) [20B1](#) [RSEL-2001A](#) [2B1](#) [LP183](#) [1-6609070-1](#) [F1500CA10](#) [1B1](#)
[FN2020A-10-06](#) [FN2020B-3-06](#) [FN2060A-3-06](#) [FN2070A-16-06](#) [FN2070B-16-08](#) [FN2090A-20-06](#) [FN2090B-12-06](#) [FN2090Z-1-06](#)
[FN2410H-25-33](#) [FN2410H-60-34](#) [FN2410H-8-44](#) [FN2412H-25-33](#) [FN2412H-8-44](#) [FN610R-3-06](#) [20EHZ7](#) [20K1](#) [30B6](#) [30BCF10R](#)