

AHM Series

Dual stage medical grade EMI Filter

These series range of double stage filters with low leakage give superior performance when used in applications with low Impedance loads controlling pulsed, continuous and intermittent interference noise and where high levels Of mains borne interference are present.



FEATURES

- Double stage filter
- Low Leakage
- Superior Performance
- Chassis mounting
- High conducted attenuation performance

APPLICATIONS

- Medical Equipment
- Diagnostic Equipment
- Low Leakage Applications
- X ray Machines
- MRI

SERIES SPECIFICATIONS

Standard Part No.	Rated current @40°C	Termination		Weight (g)
		Tab	Screw	
AHM-01	1A	6.3 x 0.8		125
AHM-02	2A	6.3 x 0.8		125
AHM-03	3A	6.3 x 0.8		170
AHM-06	6A	6.3 x 0.8		170
AHM-10	10A	6.3 x 0.8		170
AHM-15	15A	6.3 x 0.8		260
AHM-20	20A		M5	650
AHM-25	25A		M5	650
AHM-30	30A		M5	650
AHM-35	35A		M5	1000
AHM-40	40A		M5	1000
AHM-50	50A		M6	2000

CHARACTERISTICS

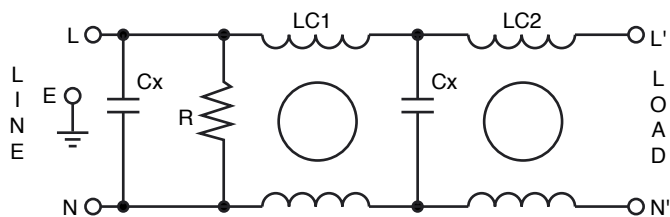
Max. Cont. Oper. Voltage	250VAC
Operating Frequency	50/60Hz
Current ratings	1A to 50A @40°C
High Potential test voltage	L to G 2120Vdc for 1 Minute; L to L 1414Vdc for 1 Minute
Design	corresponding to UL 60939-3, CSA 22.2 No.8-13 and IEC 60939
Overload Capability	135% of Rated current for 15 min.
Flammability	corresponding to UL 94 V-0
Temperature range	-25°C to +85°C
Climatic Category	25/85/21
Recommended Torque (Nm)	M5: 1.0-2.0; M6: 1.25 – 2.5; M8: 2.5-5; M10: 3.5-7

(continued)

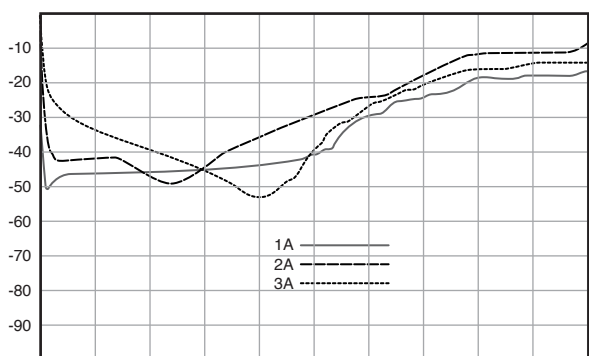
AHM Series

Dual stage medical grade EMI Filter

CIRCUIT DIAGRAM

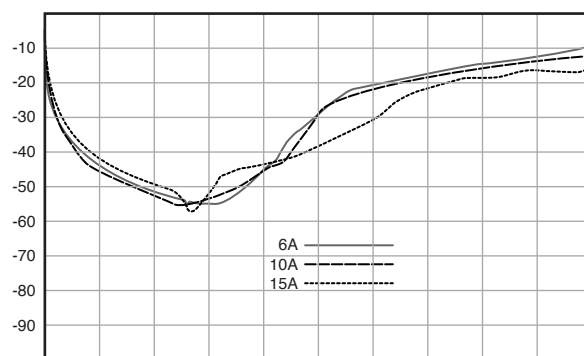


INSERTION LOSS



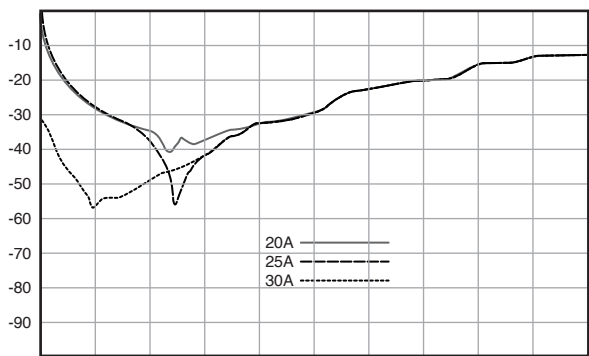
Start 30.00kHz

Stop 30.00MHz



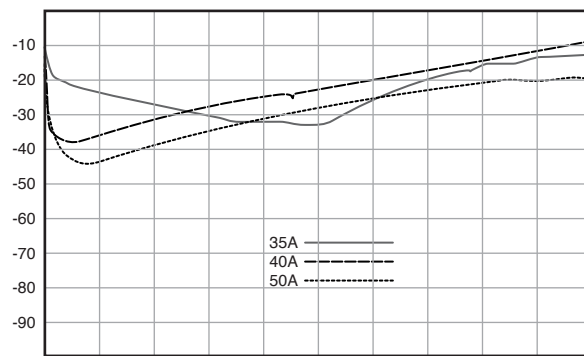
Start 30.00kHz

Stop 30.00MHz



Start 30.00kHz

Stop 30.00MHz



Start 30.00kHz

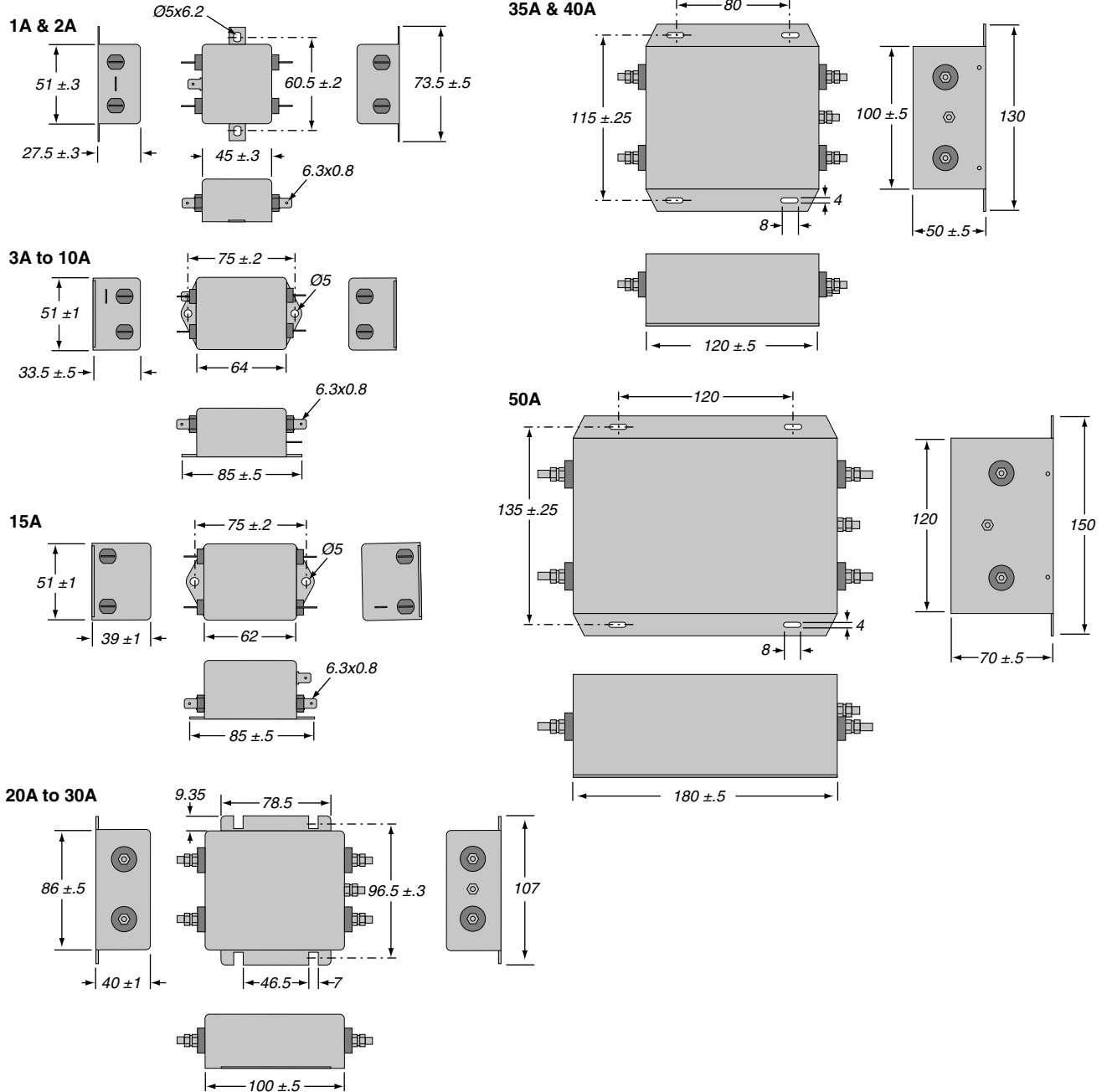
Stop 30.00MHz

AHM Series

Dual stage medical grade EMI Filter

DIMENSIONS

All dimensions in mm; Tolerances according to ISO2768-m



ORDERING INFORMATION

A H M - 0 2
 Series Medical Grade Current rating

Standard part numbers

AHM-01 AHM-20
 AHM-02 AHM-25
 AHM-03 AHM-30
 AHM-06 AHM-35
 AHM-10 AHM-40
 AHM-15 AHM-50

X-ON Electronics

Largest Supplier of Electrical and Electronic Components

Click to view similar products for [Power Line Filters](#) category:

Click to view products by [Ohmite](#) manufacturer:

Other Similar products are found below :

[6609019-3](#) [6609026-5](#) [6609030-6](#) [6609973-2](#) [D30A](#) [7-1609090-5](#) [F2810](#) [F4456A](#) [F7382Z](#) [F7863Z](#) [FAHAV3100ZC000](#) [806276](#) [FN2020B-1-06](#) [FN2080B-10-06](#) [FN2410H-32-33](#) [FN2410H-80-34](#) [FP144](#) [FS4153-20-06](#) [FS4353-500-99](#) [12-MMB-030-11-D](#) [DB4-393](#) [15811T200](#) [20B1](#) [LC630](#) [2B1](#) [1609080-2](#) [1609993-8](#) [1-6609070-1](#) [F1100AA02](#) [F1150CC10](#) [F1500CA10](#) [F1500CA15](#) [F4041Z](#) [F7585E](#) [1B1](#) [FN2070A-16-06](#) [FN2090A-20-06](#) [FN2090B-12-06](#) [FN2090Z-1-06](#) [FN2410H-25-33](#) [FN2410H-60-34](#) [FN2410H-8-44](#) [FN2412H-8-44](#) [FN323B-6-01](#) [FN3258H-130-35](#) [FN610R-3-06](#) [20EHQ7](#) [20EHZ7](#) [20K1](#) [30B6](#)