

VX Series

Heat Sinks For TGHE Series and SOT-227 Devices



Ohmite introduces the VX series heat sinks for the Ohmite TGHE series and SOT-227 devices. This powerful heat sink has a unique profile that allows thru-hole soldering onto PCBs, panel mounting, or chassis mounting with fasteners. The VX series is an ideal heat sink that is designed for large power yet provides a light weight package and works with forced convection cooling.



SERIES SPECIFICATIONS

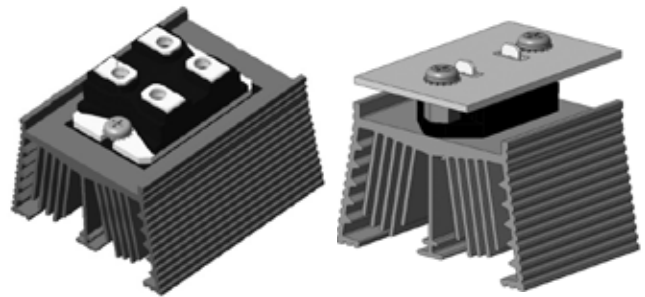
Heatsink Part Number	Compatible parts/devices	Surface Area (in ² / mm ²)	Weight (oz / g)	Length L (in. / mm)	Spacing S (in. / mm)	Thread
VXA-35-101E VXV-35-101E*	TGHE	38 / 24,638	1.4 / 39	1.38 / 35	1.10 / 28	M3
VXA-55-101E VXV-55-101E*	SOT-227	60 / 38,717	2.2 / 62	2.17 / 55	1.18 / 30	M3.5

* Note: Anodized parts are standard; degreased available on request.

CHARACTERISTICS

Fastener	M3.5 Screw
Thermal Interface Material	Use as needed. Ohmite TGH-TP1 for SOT-227 devices
Material	AL 6063-T5
Surface Finish	Black anodized or degreased
Thermal Conductivity	209 W/m-K

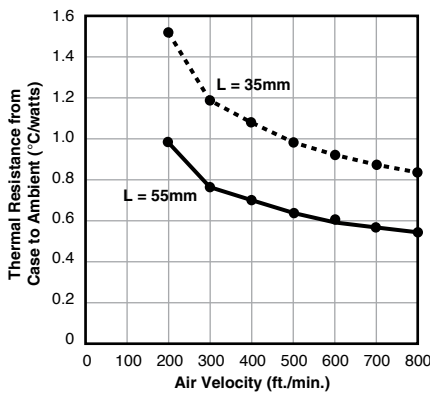
PCB Mounting Examples



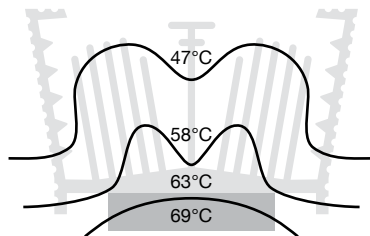
Heat sink assembly with a resistor and thermal interface material fastened with two M3.5 screws.

With Ohmite TGHE resistor

Thermal Performance

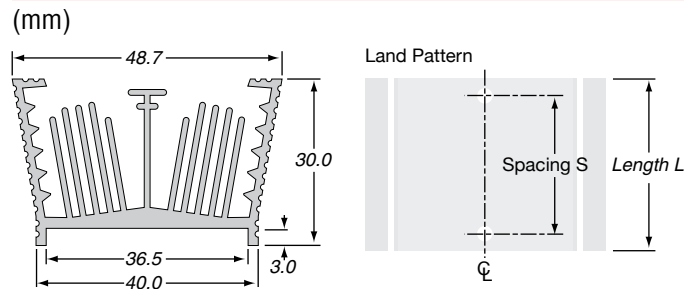


- Power dissipation is 100W, single device
- Heat load area 17 x 28mm metal tab
- Ducted air flow



Max. case temp. on SOT-227 (hot spot) is 69°C @ 5.08m/s (1000 fpm) ducted air flow.

DIMENSIONS



HOW TO ORDER

V X V - 5 5 - 1 0 1 E

Series Finish Extrusion Modifier RoHS
 VX A = anodized Length in mm Compliant
 V = degreased

X-ON Electronics

Largest Supplier of Electrical and Electronic Components

Click to view similar products for [Heat Sinks](#) category:

Click to view products by [Ohmite](#) manufacturer:

Other Similar products are found below :

[581102B00000G](#) [656-15ABPE](#) [657-20ABPNE](#) [7020B-TC12-MTG](#) [73452PPBA](#) [7G0011A](#) [PF720G](#) [HAH10L](#) [1542616-1](#) [218-40CTE3](#) [25-7520](#) [231-75PAB-13V](#) [231-75PAB-15V](#) [253-122ABE-22](#) [PSC22CB](#) [CLP212SG](#) [HAF10L](#) [HAQ10T](#) [D10100-28](#) [BDN183CBA01](#) [3-21053-4](#) [32438](#) [TX1806B](#) [LAE66A3CB](#) [WA-DT2-101E](#) [511-3U](#) [73381PPBA](#) [73403PPBA](#) [7G0047C](#) [8191-E40](#) [COMX-440-HSP](#) [510-12M](#) [D10650-40T5](#) [V8511 Y](#) [APF40-40-13CB/A01](#) [780653U04500G](#) [ATS-54310K-C2-R0](#) [FK 216 CB SA](#) [648-51AB](#) [657-20ABPESC](#) [679-25AG](#) [680-5K](#) [7106DG/TR](#) [7109DG/TR](#) [S14K35G3S5](#) [319857](#) [7717-133DAP](#) [7717-26DAP](#) [CLP-215](#) [V5640A-T](#)