



Boxes for encapsulating electronic assemblies.

With special cost advantages in cases of series production because potting electronic assemblies in pre-assembled cases is less complicated than casting liquid resin-hardener compounds in metal moulds.

Potted assemblies are protected from shock and temperature, humidity and chemical influences.

Production-limited surface quality.

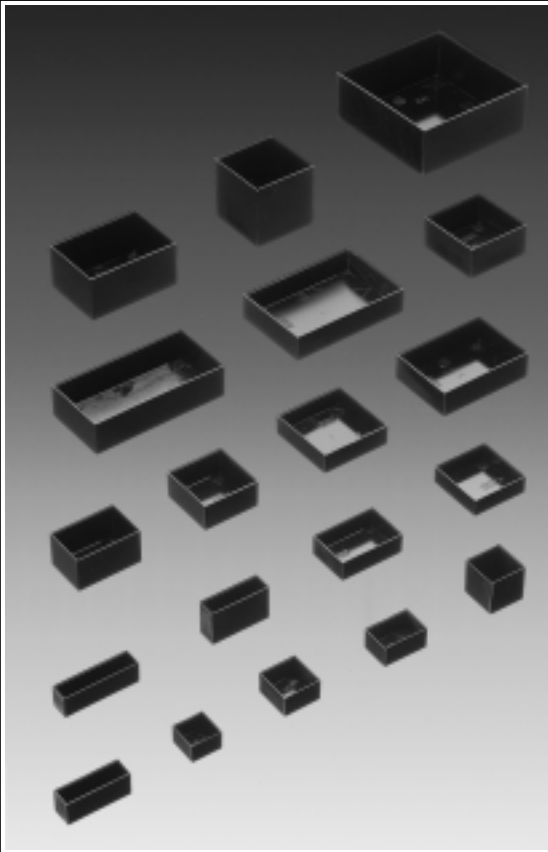
MATERIAL

Duroplastic.

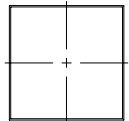
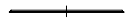
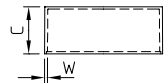
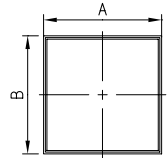
Resistant to deformation and extreme temperatures. Inflexible, therefore not resistant to fracture. Refer to the material specifications on pages 229-231.

STANDARD COLOUR

Black.



VERSION I



Part-No. Box	Part-No. Lid	Outside dim. in mm			Wall-thickness W (mm)	Version
		A	B	C		
A 80 20 130	-	20	20	13	0.8	I
A 80 25 150	A 81 25 250	25	25	15	0.8	I
A 80 25 251	A 81 25 250	25	25	25	0.8	I
A 80 30 150	A 81 30 200	30	20	15	1.0	I
A 80 40 160	A 81 40 130	40.6	13.8	16	1.0	I
A 80 40 250	A 81 40 130	40.4	13.7	25	0.8	I
A 80 40 130	A 81 40 400	40	40	13	1.0	I
A 80 40 200	A 81 40 400	40	40	20	1.0	I
A 80 45 150	A 81 45 300	45	30	15	1.0	I
A 80 45 250	A 81 45 300	45	30	25	1.0	I
A 80 50 150	A 81 50 130	50	13	15	1.0	I
A 80 50 160	A 81 50 500	50	50	15	1.3	I
A 80 50 250	A 81 50 500	50	50	25	1.3	I
A 80 50 500	A 81 50 500	50.7	50.7	50	1.6	I
A 80 70 200	A 81 70 500	70.5	50.5	20	1.4	I
A 80 70 350	A 81 70 500	70.8	50.8	35	1.4	I
A 80 90 200	A 81 90 600	90	60	20	1.5	I
A 80 10 250	A 81 10 500	100	50	25	1.5	I
A 80 10 400	A 81 10 100	100	100	40	2.0	I

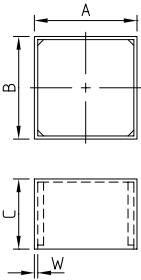
SERVICE-CENTRE

See pages 221-227.

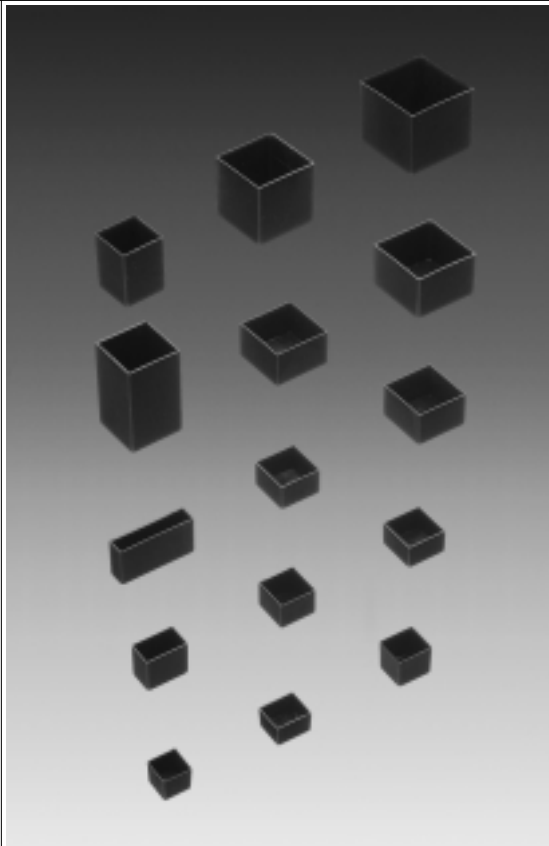
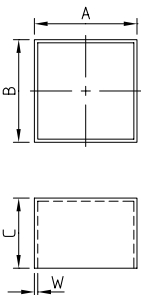
POTTING BOXES



VERSION II



VERSION III



MATERIAL

Thermoplastic, polyamide 6.6.

Good value for money. Almost unbreakable. With elastic side panels. Therefore only partly resistant to deformation.

Refer to the material specifications on pages 229-231.

STANDARD COLOUR

Black.

SERVICE-CENTRE

See pages 221-227.

Outside dim. in mm			Wall thickness in mm	Version	Part-No.
A	B	C	W		
14	14	11.5	0.8	II	A 80 14 118
17.3	14.8	10.5	0.6	II	A 80 17 108
17.3	14.8	15.2	0.6	II	A 80 17 158
18.4	18.4	13.5	0.6	III	A 80 18 138
20.5	20.5	12.5	0.8	III	A 80 20 128
21	13	17.5	0.8	III	A 80 21 178
22.3	22.3	14	0.8	III	A 80 22 148
26	26	35	1.0	III	A 80 26 358
28.7	28.7	19	1.0	III	A 80 29 198
30	30	50	1.5	III	A 80 30 508
32.3	32.3	20	1.0	III	A 80 32 208
38.8	38.8	26.5	1.2	II	A 80 39 268
38.8	38.8	39	1.2	II	A 80 39 398
40	10	20	1.0	II	A 80 40 208
46	46	40.5	1.0	III	A 80 46 408

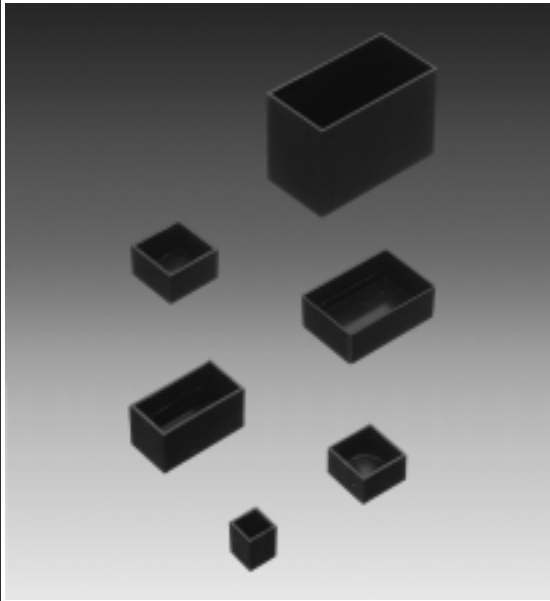
MATERIAL

Thermoplastic, ABS.

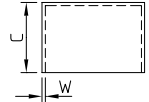
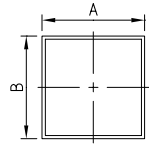
Good value for money.
 Preferably for potting small assemblies. Only partly resistant to temperature.
 Refer to the material specifications on pages 229-231.

STANDARD COLOUR

Black.



VERSION III



Part-No.	Outside dim. in mm			Wall thickness in mm	Version
	A	B	C	W	
A 80 12 159	12	12	15	1.0	III
A 80 21 129	21	21	12	1.0	III
A 80 25 159	25	25	15	1.0	III
A 80 38 209	38	20	20	1.0	III
A 80 45 169	45.5	30.5	16	1.2	III
A 80 67 469	67	35.5	46	1.8	III

SERVICE-CENTRE

See pages 221-227.

X-ON Electronics

Largest Supplier of Electrical and Electronic Components

Click to view similar products for [okw manufacturer](#):

Other Similar products are found below :

[A1020648](#) [A9413351](#) [B3218101](#) [B4208208](#) [B9004028](#) [A9082065](#) [A0224070](#) [M-6PCBK](#) [A5116000](#) [D1040465](#) [D2012121](#) [D2512017](#)
[D2512018](#) [D3015317](#) [D4054117](#) [D5111807](#) [D9052288](#) [D9072149](#) [D9408441](#) [D9413648](#) [D9413747](#) [A1020049](#) [A2650060](#) [B3214101](#)
[A9180001](#) [A9066119F](#) [A1320260](#) [A1324860](#) [A4123105](#) [A4140100](#) [A4223000](#) [D9051459](#) [A1020048](#) [A2440068](#) [A9084165](#) [A1321860](#)
[A1422469](#) [A4213008](#) [A6023019](#) [A7510000](#) [D5111057](#) [D5116057](#) [A2531068](#) [A1020068](#) [A2513048](#) [A3016638](#) [A3116068](#) [A9406351](#)
[A1031639](#) [A1102007](#)